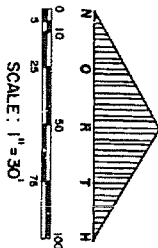


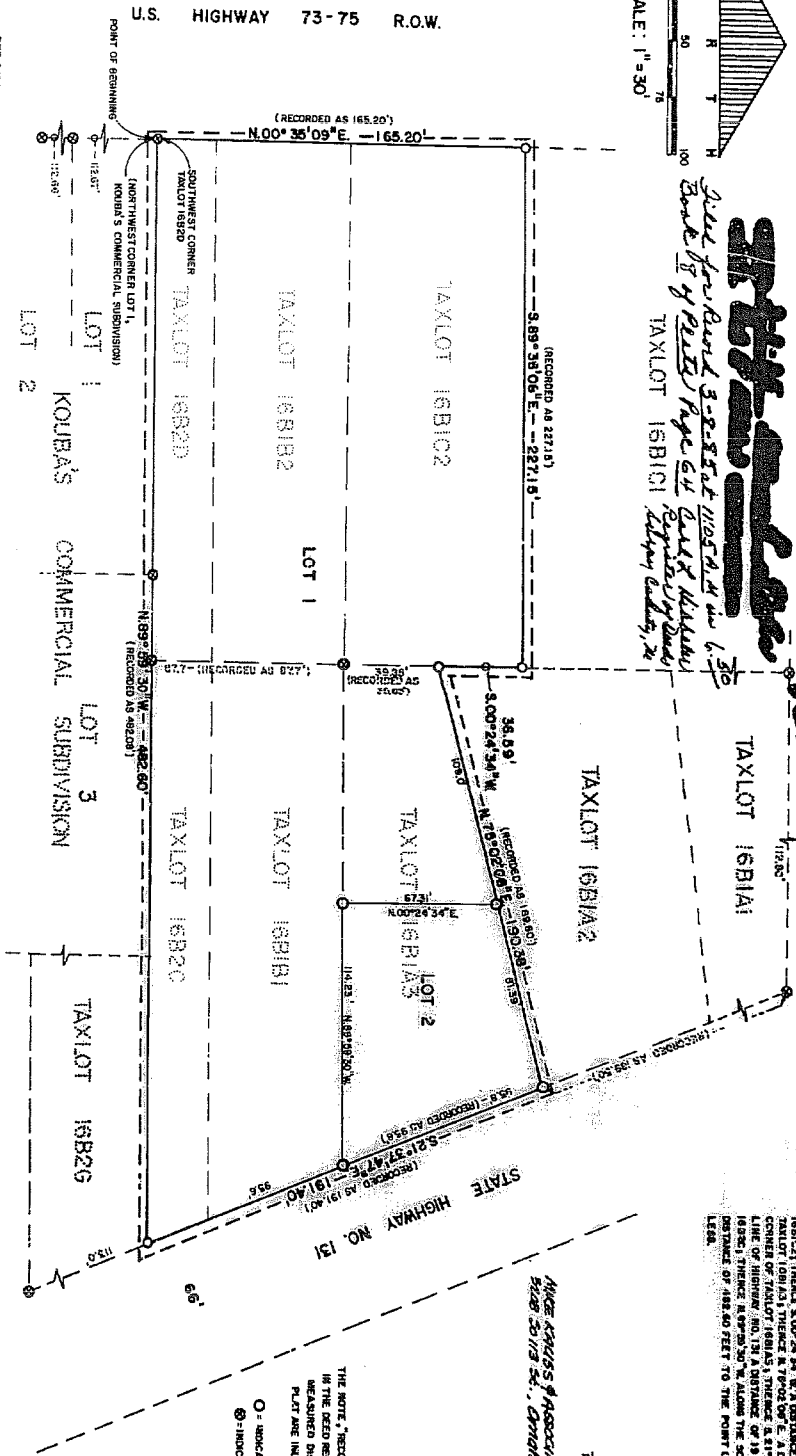
CARPENTER ENTERPRISES INCORPORATED

SUBDIVISION NO. 1

LOTS 1 AND 2, BEING A REPLAT OF ALL OF
TAXLOTS 16B1C2, 16B1B2, 16B2D, 16B2C, 16B1B1 AND 16B1A3
LOCATED IN THE SOUTHWEST ONE-QUARTER SECTION 23, T14N,
R13E OF THE 6th. PM., SARPY COUNTY NEBRASKA.



Garrell-Kaubs & Associates, Inc.
*Just for Bond 5-8-85 at 1105th St and 6th St
Made by P.B.S. Page 64 and 65
and by S.W. 11/11/85
copy by hand*



Garrell-Kaubs & Associates, Inc.
Garrell-Kaubs & Associates, Inc.
SARPY COUNTY SURVEYOR

KNOW ALL MEN BY THESE PRESENTS THAT WE CARPENTER ENTERPRISES INCORPORATED, A
CORPORATION OF NEBRASKA, HEREBY GRANT, SELL, TRANSFER, CONVEY AND WARRANT WITHIN
THIS PLAT, HAVE CAUSED SAID LAND TO BE SUBDIVIDED INTO LOTS 1, 2, 3 AND 4 AS SHOWN
HEREON, SAID ADDITION TO BE HEREIN AFTER KNOWN AS CARPENTER ENTERPRISES INCORPORATED
SUBDIVISION NO. 1, AND WE DO HEREBY RATIFY AND APPROVE TO THE DISPOSITION OF THE
QUANTA DEAL SCHEM FOR THIS PLAT, WE DO ALSO GRANT A REVERSAL EASEMENT TO THE
SARPY COUNTY PLANNING COMMISSION, TO BE TELEPHONE COMPANY, THEIR
SUCCESSIONS AND ASSIGNS, TO RECONNECT, MAINTAIN, REPAIR, REPLACE, AND/OR REBUILD
CABLES FOR THE CARRYING AND TRANSMISSION OF ELECTRICAL CURRENT FOR LIGHT, HEAT
AND POWER FOR THE TRANSMISSION OF SIGNALS AND SOUNDS OF ALL KINDS AND THE
LAND ABUTTING ALL FRONT AND REAR BOUNDARY LINES OF LOTS 1 AND 2, AN EIGHT (8) FOOT
STRIP OF LAND ABUTTING THE REAR BOUNDARY LINES OF LOTS 1 AND 2, AN EIGHT (8) FOOT
STRIP OF LAND ABUTTING THE REAR BOUNDARY LINES OF LOTS 1 AND 2, AN EIGHT (8) FOOT
EXTENSION OF THE ABOVE DESCRIBED SUBDIVISION, SAID SIXTEEN FOOT (16') WIDE
SHOULD BE PLACED IN SAID EASEMENT STRIP, BUT THAT THE BOUNDARIES ON THE PLAT SHALL
STAY AS SHOWN AND THE PLAT SHALL REMAIN VALID AND THE RIGHTS OF THE PARTIES SHALL
BE UNIMPAIRED.

IN WITNESS WHEREOF, I DO SET MY NAME THIS 14th DAY OF MARCH, 1984

Garrell-Kaubs & Associates, Inc.

Garrell-Kaubs & Associates, Inc.
SARPY COUNTY SURVEYOR

STATE OF NEBRASKA)
COUNTY OF SARPY)

ON THIS 14th DAY OF MARCH, 1984, BEFORE ME, A NOTARY PUBLIC, duly
COMMISSIONED AND QUALIFIED IN AND FOR SARPY COUNTY, NEBRASKA, APPEARED
CARPENTER ENTERPRISES INCORPORATED, a corporation organized under the laws of
NEBRASKA, and its duly authorized officer, *Michael J. Kaubs*, who is known to
me to be the person whose name is subscribed to the foregoing plat and who
acknowledged to me the execution thereof to be his voluntary act and deed.

APPROVAL OF SARPY COUNTY SURVEYOR

Michael J. Kaubs
SARPY COUNTY SURVEYOR

APPROVAL OF BELLEVUE CITY PLANNING COMMISSION

THIS PLAT OF CARPENTER ENTERPRISES INCORPORATED SUBDIVISION NO. 1, LOTS 1 AND 2, HAS
BEEN REVIEWED AND APPROVED BY THE BELLEVUE CITY PLANNING COMMISSION ON THE
DATE OF MARCH 14, 1984.

Michael J. Kaubs
BELLEVUE CITY PLANNING COMMISSION

COUNTY TREASURER'S CERTIFICATE

THIS IS TO CERTIFY THAT I FIND NO TAXES DUE OR DELINQUENT AGAINST THE PROPERTY
DESCRIBED IN THE SURVEYOR'S CERTIFICATE AND EMBARRASSED BY THE PLAT AS SHOWN BY THE
RECORDS OF THIS OFFICE.

DATE 5-11-84

Michael J. Kaubs
SARPY COUNTY TREASURER

THE NOTE "RECORDED AS" INDICATES THE DIMENSIONS AS GIVEN
IN THE DEED RECORDS, SARPY COUNTY, NEBRASKA, ACTUAL
MEASURED DIMENSIONS AS OBSERVED IN PREPARATION OF THIS
PLAT ARE INDICATED ALONG THE BOUNDARIES.

O - INDICATES IRON PIN SET
⊙ - INDICATES IRON PIV POINT

Garrell-Kaubs & Associates, Inc.
Garrell-Kaubs & Associates, Inc.
SARPY COUNTY SURVEYOR