

BROOK VALLEY II BUSINESS PARK

LOTS 28 THRU 37, INCLUSIVE
BEING A PLATING OF PART OF THE NW 1/4 OF SECTION 20, T14N, R12E
OF THE 6TH P.M., SARY COUNTY, NEBRASKA.

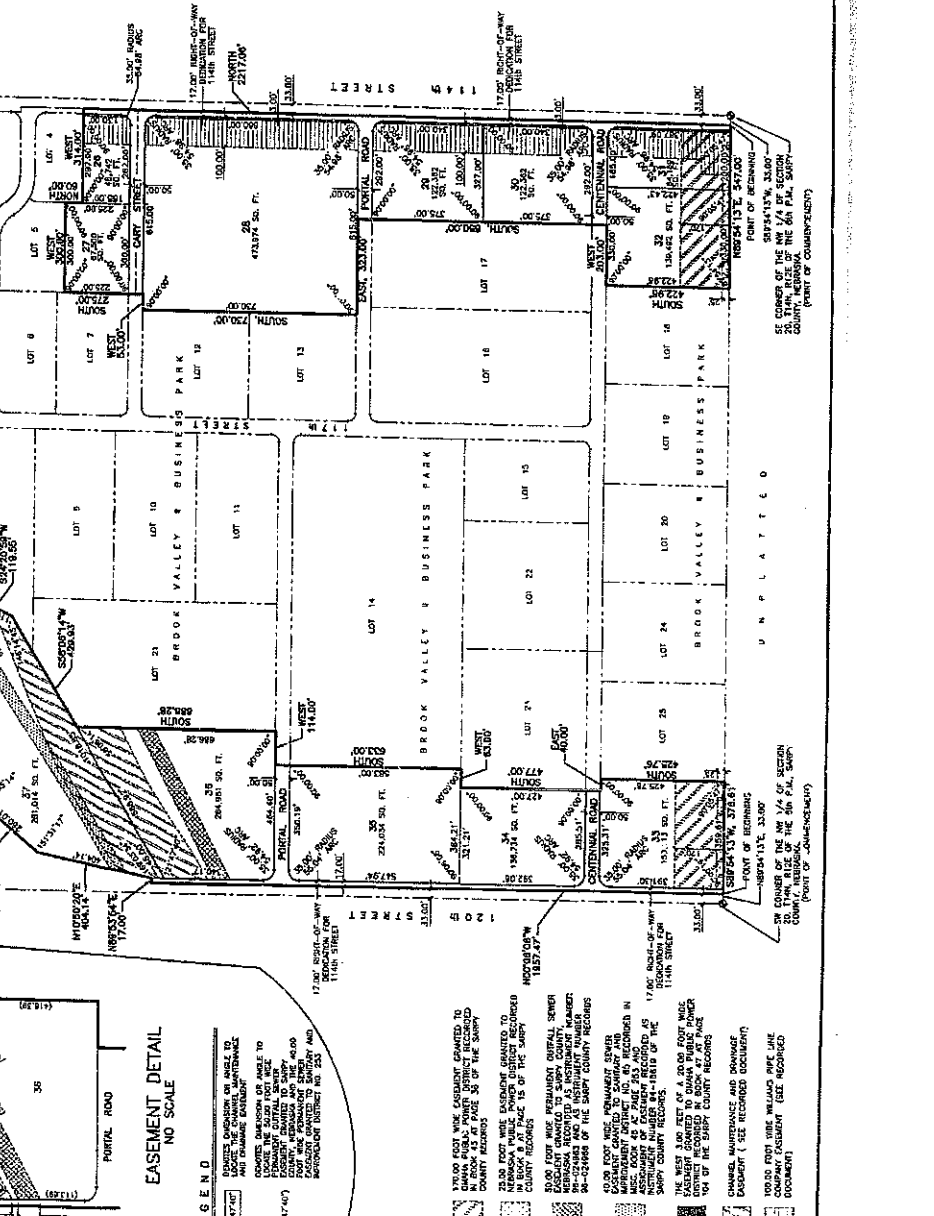
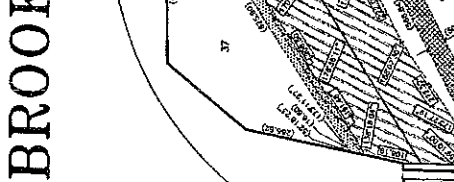
SEAL & SIGNATURE OF SURVEYOR

[Signature]

REGISTER OF DEEDS
99 MAY 20 PM 3:00

Stamp copy
plus \$35.4
Cash Check

Verify
D.I.E. 2500
Proof 2500
Fee \$ 2500
Stamp copy



SURVEYOR'S CERTIFICATE
I, the undersigned, a duly licensed and sworn-in Surveyor of the State of Nebraska, do hereby certify that the foregoing plat is a true and correct representation of the facts as shown to me by the owner or owners of the land described therein, and that the same are in accordance with the laws of this State and the rules and regulations of the State Board of Equalization, and that the same have been duly recorded in the office of the Register of Deeds of Sary County, Nebraska, and that the same are now a part of the public records of said County, Nebraska, and that the same are now a part of the public records of said County, Nebraska, and that the same are now a part of the public records of said County, Nebraska.

DEDICATION
I, the undersigned, do hereby dedicate to the public use of the people of the State of Nebraska, the land described herein, for the use of a public road, and that the same are now a part of the public records of said County, Nebraska, and that the same are now a part of the public records of said County, Nebraska, and that the same are now a part of the public records of said County, Nebraska.

ACKNOWLEDGMENT OF NOTARY
I, the undersigned, a Notary Public for the State of Nebraska, do hereby certify that the foregoing plat is a true and correct representation of the facts as shown to me by the owner or owners of the land described therein, and that the same are in accordance with the laws of this State and the rules and regulations of the State Board of Equalization, and that the same have been duly recorded in the office of the Register of Deeds of Sary County, Nebraska, and that the same are now a part of the public records of said County, Nebraska, and that the same are now a part of the public records of said County, Nebraska.

APPROVAL OF SARY COUNTY COUNCIL
I, the undersigned, a member of the Sary County Council, do hereby certify that the foregoing plat is a true and correct representation of the facts as shown to me by the owner or owners of the land described therein, and that the same are in accordance with the laws of this State and the rules and regulations of the State Board of Equalization, and that the same have been duly recorded in the office of the Register of Deeds of Sary County, Nebraska, and that the same are now a part of the public records of said County, Nebraska, and that the same are now a part of the public records of said County, Nebraska.

SARY COUNTY TREASURER'S CERTIFICATE
I, the undersigned, the Treasurer of Sary County, Nebraska, do hereby certify that the foregoing plat is a true and correct representation of the facts as shown to me by the owner or owners of the land described therein, and that the same are in accordance with the laws of this State and the rules and regulations of the State Board of Equalization, and that the same have been duly recorded in the office of the Register of Deeds of Sary County, Nebraska, and that the same are now a part of the public records of said County, Nebraska, and that the same are now a part of the public records of said County, Nebraska.