

LEGAL DESCRIPTION
DISTRICT BOUNDARY
DOUGLAS COUNTY SID NO. 435

A tract of land located in the West 1/2 and the SW 1/4 of the SE 1/4 of Section 8, Township 14 North, Range 12 East of the 6th P.M., Douglas County, Nebraska, more particularly described as follows:

Commencing at the South 1/4 corner of said Section 8; thence N00°30'10"E (assumed bearing) along the East line of said West 1/2 of Section 8, a distance of 33.01 feet to a point on the North right-of-way line of Harrison Street; said point also being the point of beginning; thence continuing N00°30'10"E along said North right-of-way line of Harrison Street, a distance of 17.00 feet; thence N89°34'35"W along said North right-of-way line of Harrison Street, a distance of 200.06 feet; thence N00°25'25"E along said North right-of-way line of Harrison Street, a distance of 14.00 feet; thence N76°23'26"W along said North right-of-way line of Harrison Street, a distance of 359.48 feet; thence N79°55'42"W along said North right-of-way line of Harrison Street, a distance of 101.44 feet; thence S72°40'45"W along said North right-of-way line of Harrison Street, a distance of 52.50 feet; thence N89°34'35"W along said North right-of-way line of Harrison Street, a distance of 27.55 feet; thence N00°25'25"E along said North right-of-way line of Harrison Street, a distance of 45.11 feet; thence N89°12'35"W along said North right-of-way line of Harrison Street, a distance of 115.14 feet; thence S36°36'24"W along said North right-of-way line of Harrison Street, a distance of 174.23 feet; thence N85°11'43"W along said North right-of-way line of Harrison Street, a distance of 112.94 feet; thence S47°24'40"W along said North right-of-way line of Harrison Street, a distance of 40.82 feet; thence N89°34'35"W along said North right-of-way line of Harrison Street, a distance of 329.20 feet; thence N00°25'25"E, a distance of 320.00 feet; thence S89°34'35"E, a distance of 190.00 feet; thence N55°24'51"E, a distance of 60.00 feet; thence N09°48'00"W, a distance of 105.00 feet; thence N31°40'48"E, a distance of 1058.21 feet; thence N61°11'55"E, a distance of 147.94 feet; thence N23°50'18"W, a distance of 280.00 feet; thence N66°09'42"E, a distance of 180.00 feet; thence N23°50'18"W, a distance of 520.00 feet; thence N04°15'44"E, a distance of 25.00 feet; thence S85°44'16"E, a distance of 5.53 feet; thence Northeasterly on a curve to the left with a radius of 270.00 feet, a distance of 132.42 feet, said curve having a long chord which bears N80°12'43"E, a distance of 131.10 feet; thence N66°09'42"E, a distance of 126.17 feet; thence S23°50'18"E, a distance of 898.24 feet; thence S03°26'20"E, a distance of 1522.17 feet to a point on said North right-of-way line of Harrison Street; thence N89°30'04"W along said North right-of-way line of Harrison Street, a distance of 39.69 feet to the point of beginning.

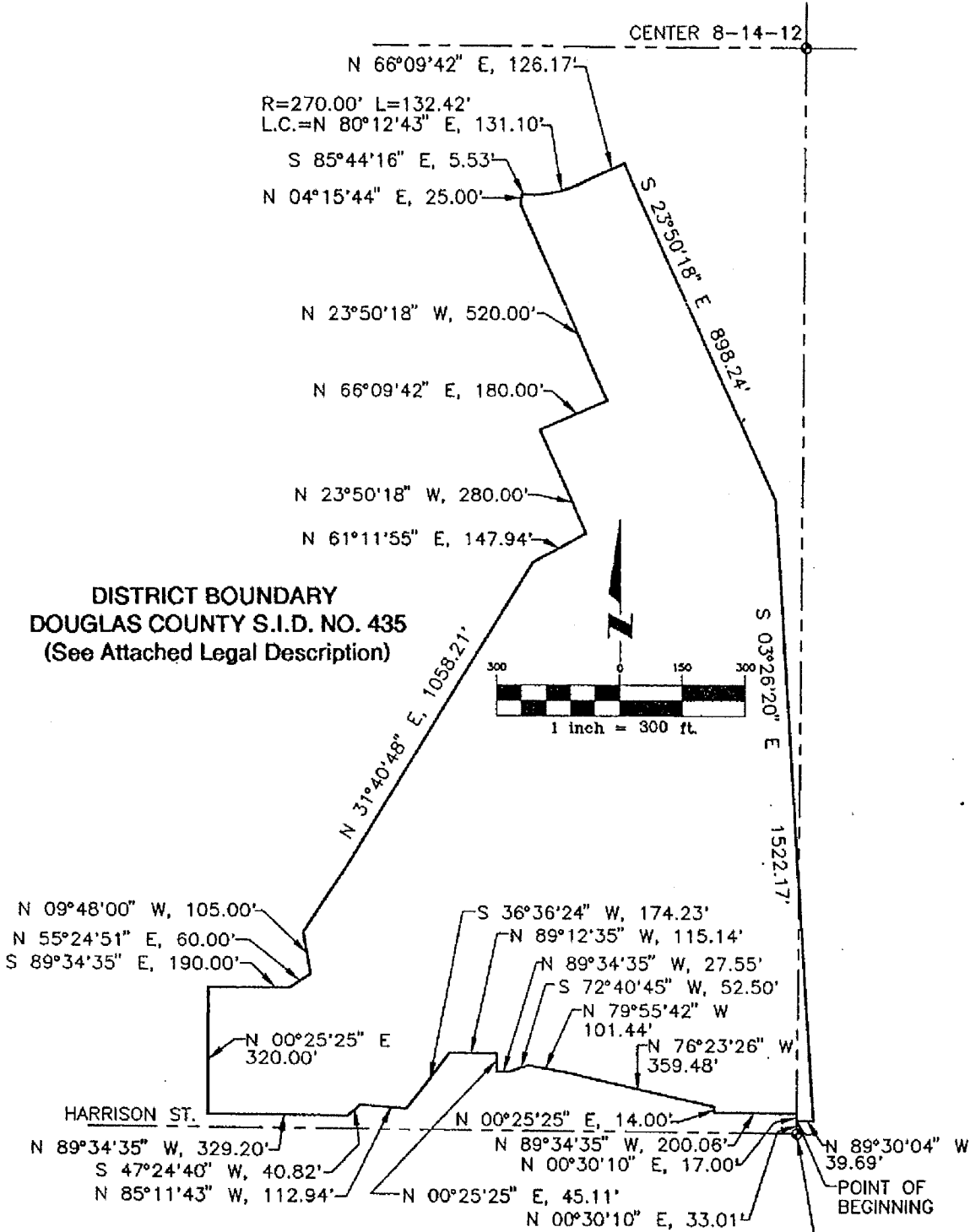
Said tract of land contains an area of 39.254 acres, more or less.

#98043.1sw
8/19/98

E & A CONSULTING GROUP
12001 "Q" STREET
OMAHA, NE 68137

Exhibit "A"

DISTRICT BOUNDARY
DOUGLAS COUNTY S.I.D. NO. 435
(See Attached Legal Description)



E&A CONSULTING GROUP
12001 "O" STREET
OMAHA, NE 68137
(402) 895-4700 FAX (402) 895-3599

#98043
-8-19-98

Exhibit "A"