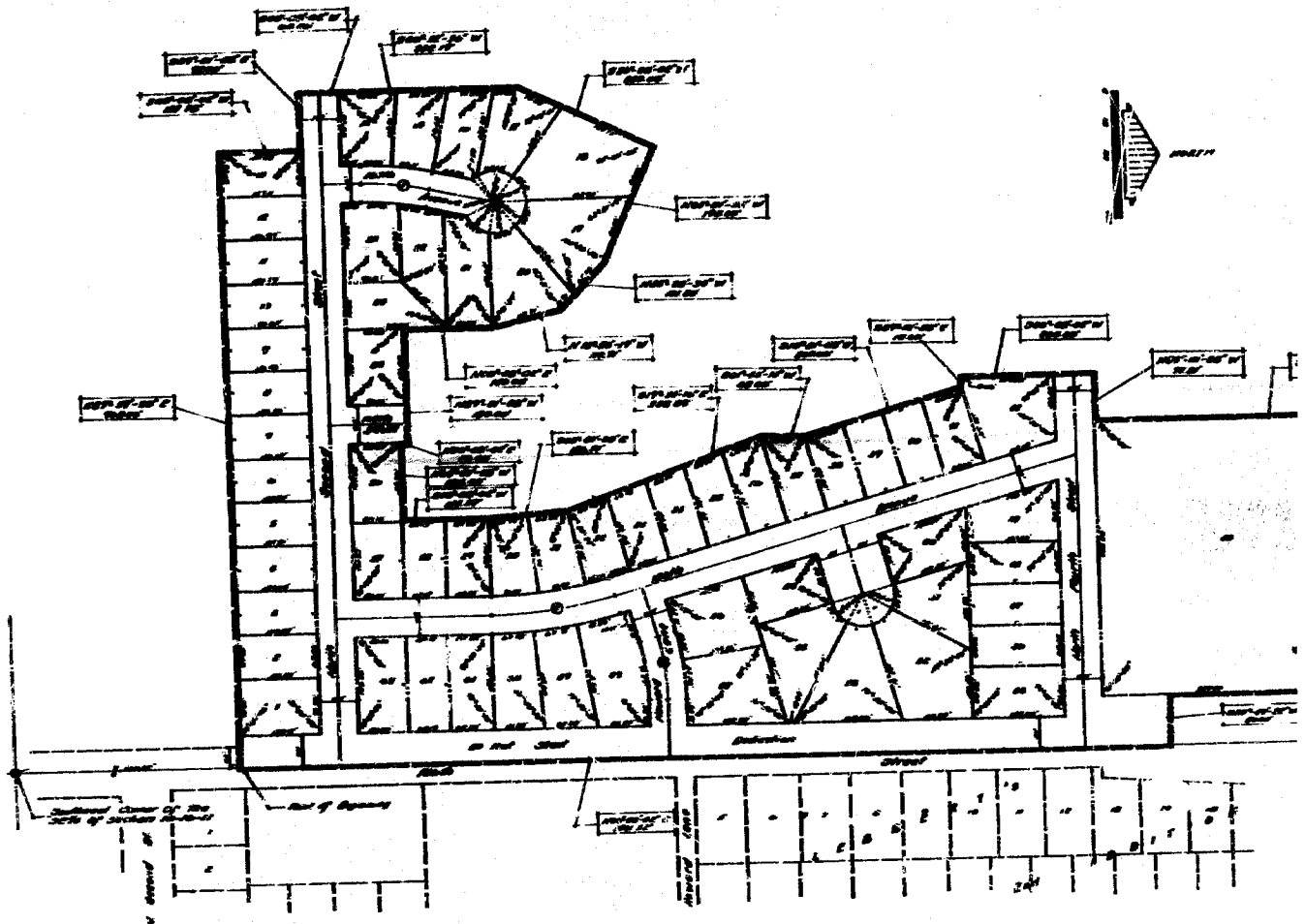


# BENNINGTON HEIGHT

Sub 1 through 63, Subsite  
 Being a Flotting of Part of the East One Half of Section 10, T24N, R12E  
 Of The 6th P.M., Douglas County, Nebraska.



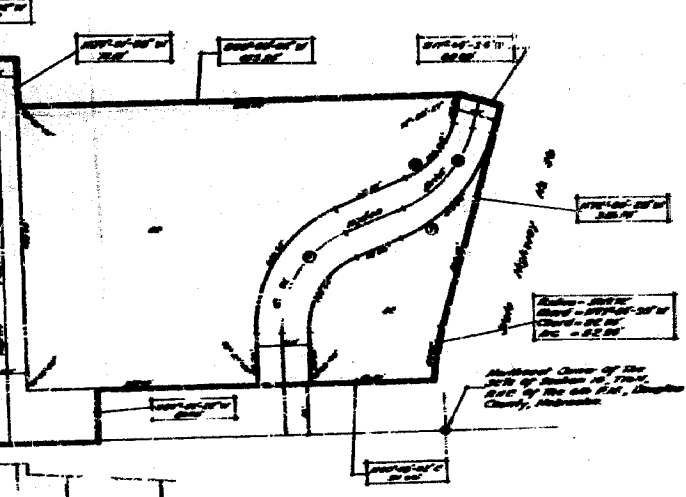
Curve	Bearing	Dist.	Dist.
1	N 89° 20' 00"	2701.5700	2701.5700
2	S 89° 20' 00"	2701.5700	2701.5700
3	N 89° 20' 00"	2701.5700	2701.5700
4	S 89° 20' 00"	2701.5700	2701.5700
5	N 89° 20' 00"	2701.5700	2701.5700
6	S 89° 20' 00"	2701.5700	2701.5700
7	N 89° 20' 00"	2701.5700	2701.5700
8	S 89° 20' 00"	2701.5700	2701.5700
9	N 89° 20' 00"	2701.5700	2701.5700
10	S 89° 20' 00"	2701.5700	2701.5700
11	N 89° 20' 00"	2701.5700	2701.5700
12	S 89° 20' 00"	2701.5700	2701.5700
13	N 89° 20' 00"	2701.5700	2701.5700
14	S 89° 20' 00"	2701.5700	2701.5700
15	N 89° 20' 00"	2701.5700	2701.5700
16	S 89° 20' 00"	2701.5700	2701.5700
17	N 89° 20' 00"	2701.5700	2701.5700
18	S 89° 20' 00"	2701.5700	2701.5700
19	N 89° 20' 00"	2701.5700	2701.5700
20	S 89° 20' 00"	2701.5700	2701.5700
21	N 89° 20' 00"	2701.5700	2701.5700
22	S 89° 20' 00"	2701.5700	2701.5700
23	N 89° 20' 00"	2701.5700	2701.5700
24	S 89° 20' 00"	2701.5700	2701.5700
25	N 89° 20' 00"	2701.5700	2701.5700
26	S 89° 20' 00"	2701.5700	2701.5700
27	N 89° 20' 00"	2701.5700	2701.5700
28	S 89° 20' 00"	2701.5700	2701.5700
29	N 89° 20' 00"	2701.5700	2701.5700
30	S 89° 20' 00"	2701.5700	2701.5700
31	N 89° 20' 00"	2701.5700	2701.5700
32	S 89° 20' 00"	2701.5700	2701.5700
33	N 89° 20' 00"	2701.5700	2701.5700
34	S 89° 20' 00"	2701.5700	2701.5700
35	N 89° 20' 00"	2701.5700	2701.5700
36	S 89° 20' 00"	2701.5700	2701.5700
37	N 89° 20' 00"	2701.5700	2701.5700
38	S 89° 20' 00"	2701.5700	2701.5700
39	N 89° 20' 00"	2701.5700	2701.5700
40	S 89° 20' 00"	2701.5700	2701.5700
41	N 89° 20' 00"	2701.5700	2701.5700
42	S 89° 20' 00"	2701.5700	2701.5700
43	N 89° 20' 00"	2701.5700	2701.5700
44	S 89° 20' 00"	2701.5700	2701.5700
45	N 89° 20' 00"	2701.5700	2701.5700
46	S 89° 20' 00"	2701.5700	2701.5700
47	N 89° 20' 00"	2701.5700	2701.5700
48	S 89° 20' 00"	2701.5700	2701.5700
49	N 89° 20' 00"	2701.5700	2701.5700
50	S 89° 20' 00"	2701.5700	2701.5700
51	N 89° 20' 00"	2701.5700	2701.5700
52	S 89° 20' 00"	2701.5700	2701.5700
53	N 89° 20' 00"	2701.5700	2701.5700
54	S 89° 20' 00"	2701.5700	2701.5700
55	N 89° 20' 00"	2701.5700	2701.5700
56	S 89° 20' 00"	2701.5700	2701.5700
57	N 89° 20' 00"	2701.5700	2701.5700
58	S 89° 20' 00"	2701.5700	2701.5700
59	N 89° 20' 00"	2701.5700	2701.5700
60	S 89° 20' 00"	2701.5700	2701.5700
61	N 89° 20' 00"	2701.5700	2701.5700
62	S 89° 20' 00"	2701.5700	2701.5700
63	N 89° 20' 00"	2701.5700	2701.5700

1921  
 \$19.00  
 THE SURVEYOR GENERAL AND REGISTERED TO THE BOARD OF SURVEYING AND MAPPING, NEBRASKA



# HEIGHTS

10, 7164, RND



*Note:*  
Distances Shown On Curves Are Arc  
Distances Not Chord Distances.

THE STATE OF TEXAS, COUNTY OF [illegible], BEFORE ME, the undersigned authority, on this [illegible] day of [illegible], 19[illegible], personally appeared [illegible], known to me to be the person whose name is subscribed to the foregoing instrument, and acknowledged to me that he executed the same for the purposes and consideration therein expressed.

Given under my hand and seal of office this [illegible] day of [illegible], 19[illegible].

[Signature]

Notary Public in and for the State of Texas

STATE OF TEXAS

COUNTY OF [illegible]

BEFORE ME, the undersigned authority, on this [illegible] day of [illegible], 19[illegible], personally appeared [illegible], known to me to be the person whose name is subscribed to the foregoing instrument, and acknowledged to me that he executed the same for the purposes and consideration therein expressed.

Given under my hand and seal of office this [illegible] day of [illegible], 19[illegible].

[Signature]

Notary Public in and for the State of Texas

	BENNINGTON HEIGHTS	
	Book: [illegible] Page: [illegible]	Date: [illegible]

