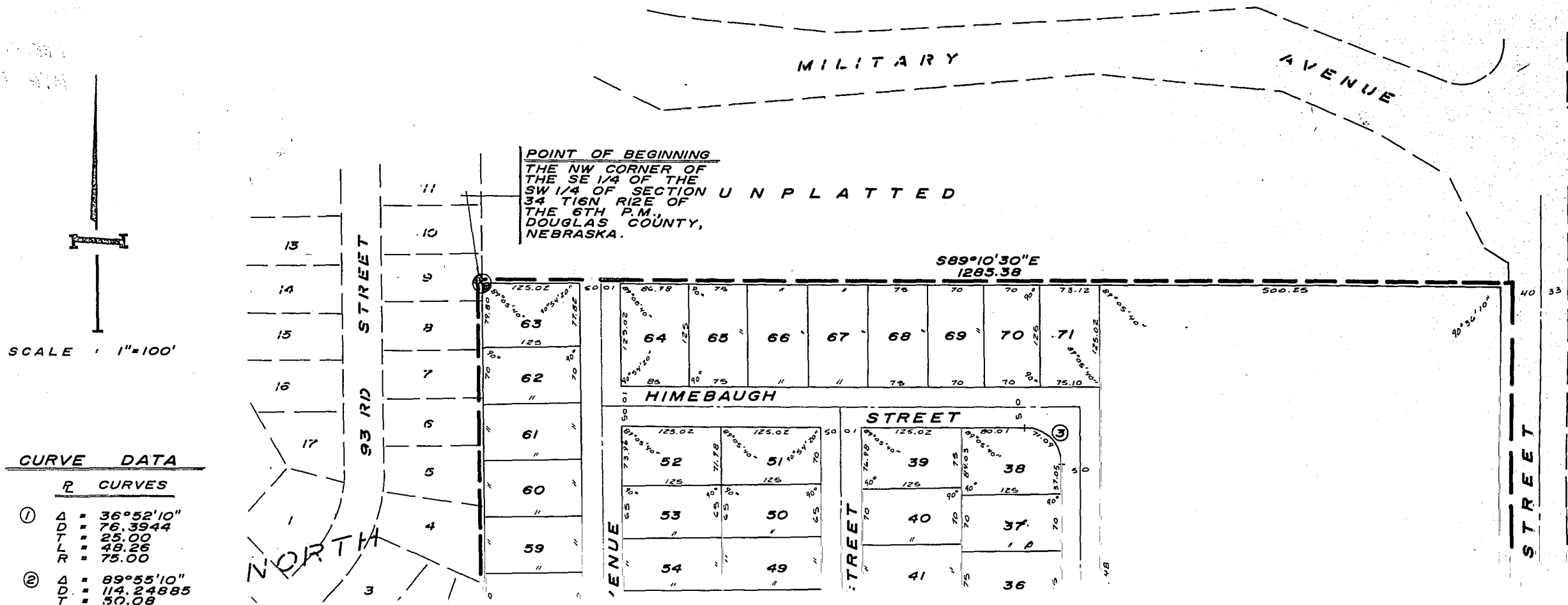


YOSSEM'S PARADISE VALLEY

LOTS 1 THRU 72

BEING A PLATTING OF PART OF THE SE 1/4 OF THE SW 1/4 OF SECTION 34 T16N R12E OF THE 6TH P.M., DOUGLAS COUNTY, NEBRASKA.



POINT OF BEGINNING
THE NW CORNER OF
THE SE 1/4 OF THE
SW 1/4 OF SECTION UNPLATTED
34 T16N R12E OF
THE 6TH P.M.,
DOUGLAS COUNTY,
NEBRASKA.

SCALE : 1"=100'

CURVE DATA	
R	CURVES
①	Δ = 36°52'10"
	D = 76.3944
	T = 25.00
	L = 48.26
	R = 75.00
②	Δ = 89°55'10"
	D = 114.24885
	T = 50.08

APPROVAL OF OMAHA CITY COUNCIL

This plat of YOSSEM'S PARADISE VALLEY was approved and accepted by the City Council of Omaha on this 4th day of Oct, 1966.

W. Jensen

 Mayor

W. J. Abbey Jr.

 President

Mary Heligan Cornett

 City Clerk

DOUGLAS COUNTY
 SURVEYOR'S OFFICE

[Signature]

LAMP, BYNEARSON & ASSOCIATES

CONSULTING ENGINEERS - LAND SURVEYORS

SCALE *As Shown*
 DRAWN BY *DC*
 DATE *8-2-66*
 REVISIONS

YOSSEM'S
PARADISE VALLEY

FINAL PLAT

DRAWING NUMBER
64-17

18
 changed in the original from all references of the year 1966 to 1965
 Nov 1966 2:04 PM
 THOMAS J. STEVENS, REGISTERED PROFESSIONAL ENGINEER NO. 35-00