

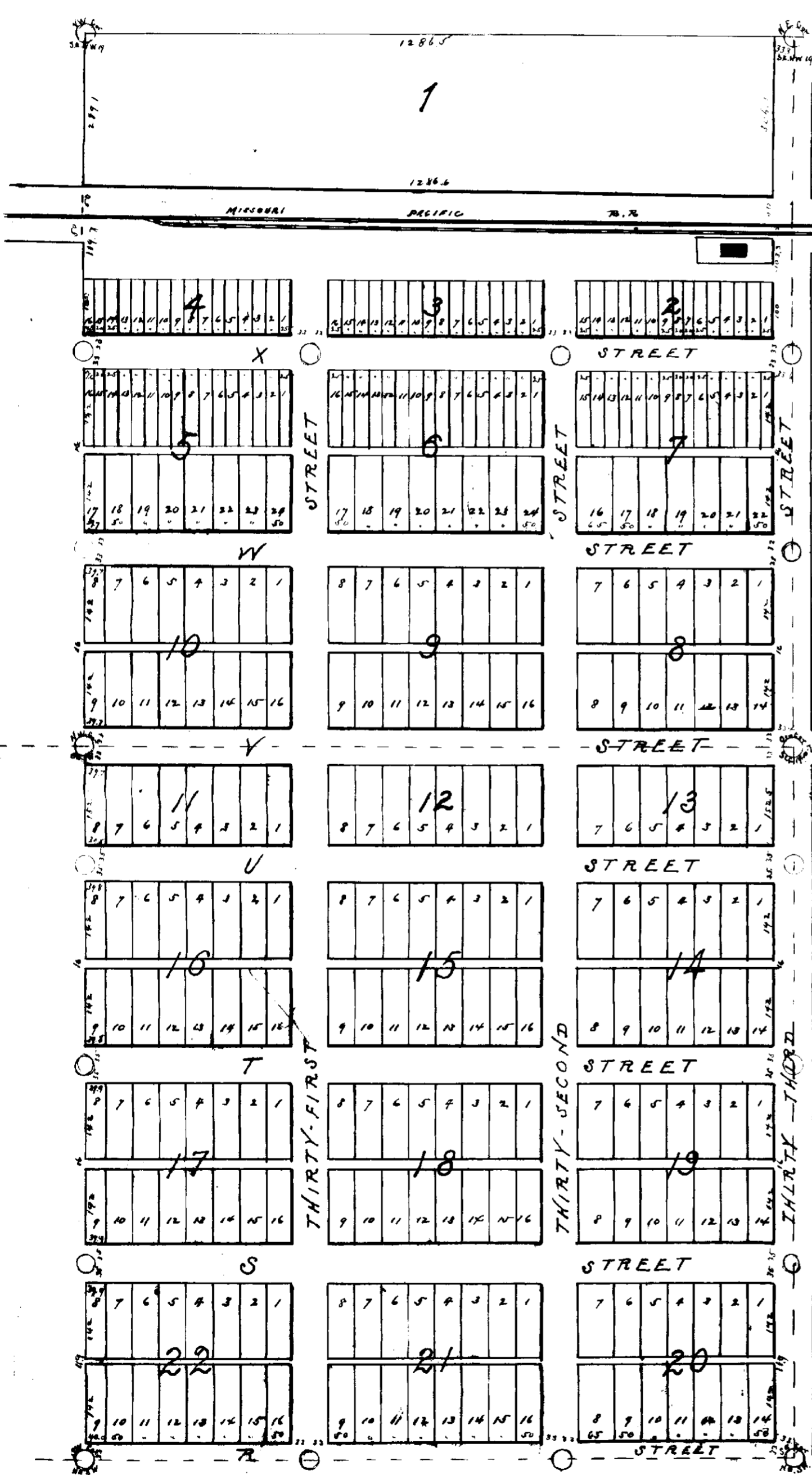
PECK'S GROVE

LANCASTER CO. NEB.

Scale, one inch = 200 feet.

LANCASTER COUNTY,
 Entered on the records
 and filed for record in
 the office of the County Clerk,
 July 15 1886
 J. P. Walton
 Co. Surveyor

DeBell
 Clerk



LEGEND.

Peck's Grove, Lancaster Co. Neb. comprises the S.E. 1/4 of the N.W. 1/4 and the N.E. 1/4 of the S.W. 1/4 of Section 19 T. 10 N. R. 7 E. of the S. 23 P.M.
 T. Street is 33 feet wide.
 S, T and U Streets are each 70 feet wide.
 V, W, X, Thirty-first and Thirty-second streets are each 66 feet wide.
 Thirty-third street has dimensions as marked on the plat.
 Alleys are 16 feet wide except the alleys in blocks 20, 21 and 22 which are 11 1/2 feet wide.
 All streets and alleys are parallel with or at right angles to the south line of the N.E. 1/4 S.W. 1/4 of Section 19, T. 10 N. R. 7 E.
 All lots have dimensions as indicated in feet and decimals by red figures on the plat.
 Block figures indicate the lot and block numbers.
 Oak stakes are driven to the ground at the front corners of all lots and at the alley corners on the block lines.
 Stones are set at points marked 2 and 3.
 July 10th 1886.
 J. P. Walton
 Co. Surveyor.

The foregoing subdivision of the S.E. 1/4 N.W. 1/4 and the N.E. 1/4 S.W. 1/4 of Section 19, T. 10, N. R. 7 E. as appears on this plat is with the free consent and in accordance with the desire of the undersigned owner and proprietor.
 Signed this twelfth day of July A.D. 1886
 In presence of,
 Frederick, Attorney
 Trustee

The State of Nebraska, ss On this twelfth day of July A.D. 1886 before me the undersigned a Notary Public duly commissioned and qualified for and residing in said county personally came Frederick H. Hovey trustee to me personally known to be the identical person who executed the foregoing instrument and he acknowledged the same to be his voluntary act and deed.
 Witness my hand and Notarial Seal at Lincoln in said county the day and year last above written
 Nelson, Notary Public.