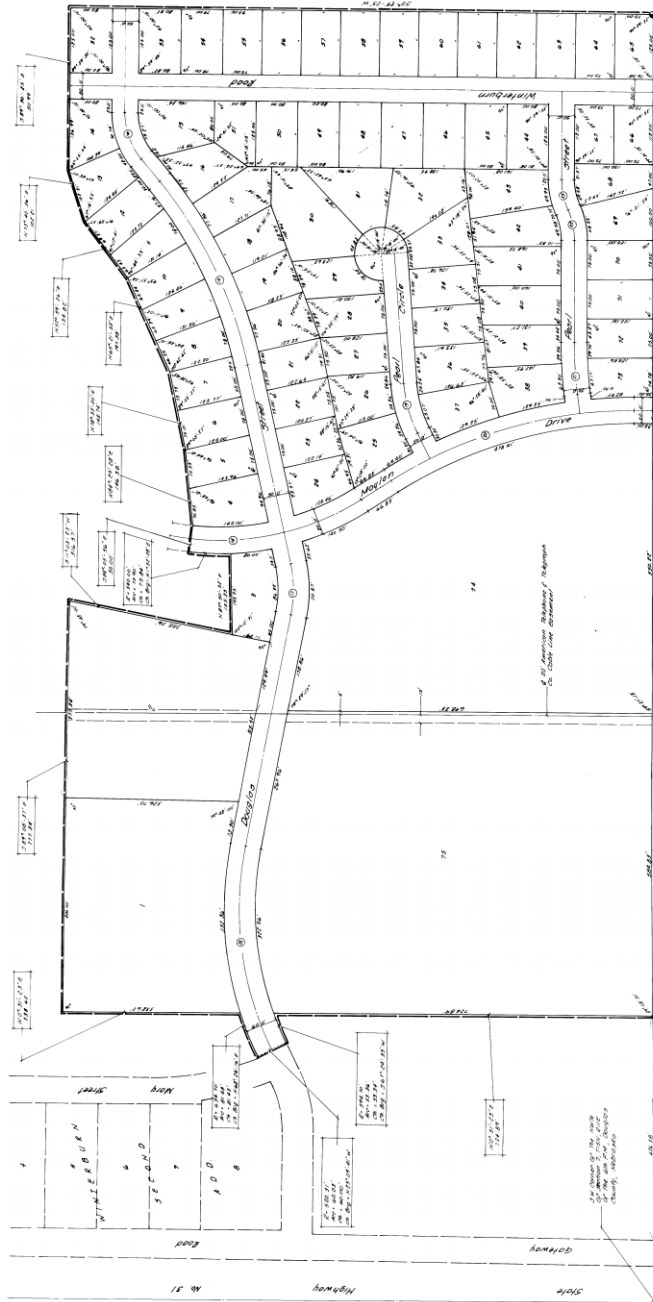


WINTERBURN 3RD ADD.

Lots 1, Two 1's, inclusive
Being a Platting of Part of the NW 1/4 of Section 3, T19N, R10E, of the 60th AM,
Douglas County, Nebraska



COMMITTEE	DATE	APPROVED
1	1-21-1921	...
2	1-21-1921	...
3	1-21-1921	...
4	1-21-1921	...
5	1-21-1921	...
6	1-21-1921	...
7	1-21-1921	...
8	1-21-1921	...
9	1-21-1921	...
10	1-21-1921	...
11	1-21-1921	...
12	1-21-1921	...
13	1-21-1921	...
14	1-21-1921	...
15	1-21-1921	...
16	1-21-1921	...
17	1-21-1921	...
18	1-21-1921	...
19	1-21-1921	...
20	1-21-1921	...
21	1-21-1921	...
22	1-21-1921	...
23	1-21-1921	...
24	1-21-1921	...
25	1-21-1921	...
26	1-21-1921	...
27	1-21-1921	...
28	1-21-1921	...
29	1-21-1921	...
30	1-21-1921	...

I HEREBY CERTIFY THAT I HAVE MADE A RECENT SURVEY OF THE ABOVE DESCRIBED TRACT, AND THAT THE BOUNDARIES THEREON HAVE BEEN...
 I, John H. Thompson, Surveyor, do hereby certify that the above platting is correct and true to the original platting of the same...
 My Commission Expires on July 1, 1921, NEBRASKA, THE DATE LAST APPROVED.

KNOW ALL MEN BY THESE PRESENTS, THAT THE HILLMAN INVESTMENT CO., A NEBRASKA CORPORATION, OWNERS, LENA M. WINTERBURN AND...
 I, John H. Thompson, Surveyor, do hereby certify that the above platting is correct and true to the original platting of the same...
 My Commission Expires on July 1, 1921, NEBRASKA, THE DATE LAST APPROVED.

KNOW ALL MEN BY THESE PRESENTS, THAT THE HILLMAN INVESTMENT CO., A NEBRASKA CORPORATION, OWNERS, LENA M. WINTERBURN AND...
 I, John H. Thompson, Surveyor, do hereby certify that the above platting is correct and true to the original platting of the same...
 My Commission Expires on July 1, 1921, NEBRASKA, THE DATE LAST APPROVED.

KNOW ALL MEN BY THESE PRESENTS, THAT THE HILLMAN INVESTMENT CO., A NEBRASKA CORPORATION, OWNERS, LENA M. WINTERBURN AND...
 I, John H. Thompson, Surveyor, do hereby certify that the above platting is correct and true to the original platting of the same...
 My Commission Expires on July 1, 1921, NEBRASKA, THE DATE LAST APPROVED.

KNOW ALL MEN BY THESE PRESENTS, THAT THE HILLMAN INVESTMENT CO., A NEBRASKA CORPORATION, OWNERS, LENA M. WINTERBURN AND...
 I, John H. Thompson, Surveyor, do hereby certify that the above platting is correct and true to the original platting of the same...
 My Commission Expires on July 1, 1921, NEBRASKA, THE DATE LAST APPROVED.

THOMPSON BREWSTER
 Consulting Engineers & Land Surveyors
 Omaha, Nebraska