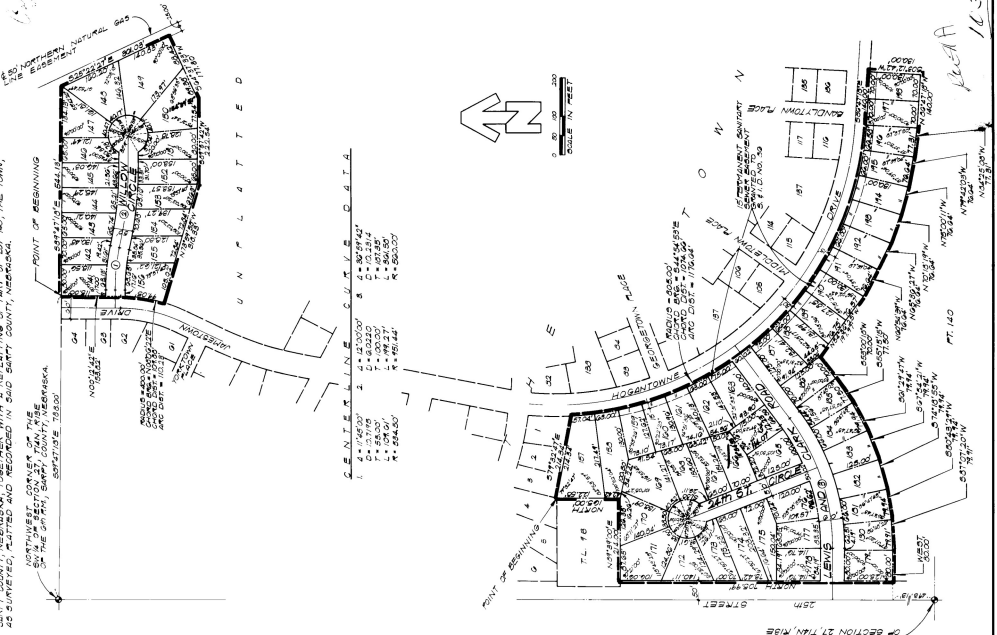


WILLOW SPRINGS

LOTS 141 THRU 175, INCLUSIVE
BEING A PLATTING OF PART OF THE SW 1/4 OF SECTION 27, T4N, R3E, NEBRASKA,
AS SUBMITTED, PLATTED AND RECORDED IN SAID COUNTY, NEBRASKA,
ON THE 27TH DAY OF JULY, 1911,
NORTHWEST CORNER OF THE
SW 1/4 OF SECTION 27, T4N, R3E,
ON THE 27TH DAY OF JULY, 1911,
SECTION 3550'



FILE: *112*
DATE: *8-11-12*
JUL 17 AM 12:44
ERNEST



8-112
Ernest H. King
STATE OF NEBRASKA
COUNTY OF SARASOTA
I, Ernest H. King, County Clerk, do hereby certify that the foregoing platting was submitted to me for record on the 14th day of August, 1912, and that the same is correct and true according to the original platting on file in my office, and that the same has been recorded in my office on the 14th day of August, 1912, and that the same is now a part of the public records of said county, Nebraska.

Michael H. Hagan
MICHAEL H. HAGAN
COUNTY CLERK

John M. Keller
JOHN M. KELLER
COUNTY CLERK

John M. Keller
JOHN M. KELLER
COUNTY CLERK

John M. Keller
JOHN M. KELLER
COUNTY CLERK

John M. Keller
JOHN M. KELLER
COUNTY CLERK

John M. Keller
JOHN M. KELLER
COUNTY CLERK

John M. Keller
JOHN M. KELLER
COUNTY CLERK



WILLOW SPRINGS
THOMPSON DRESSEN
COUNTY CLERK

16374