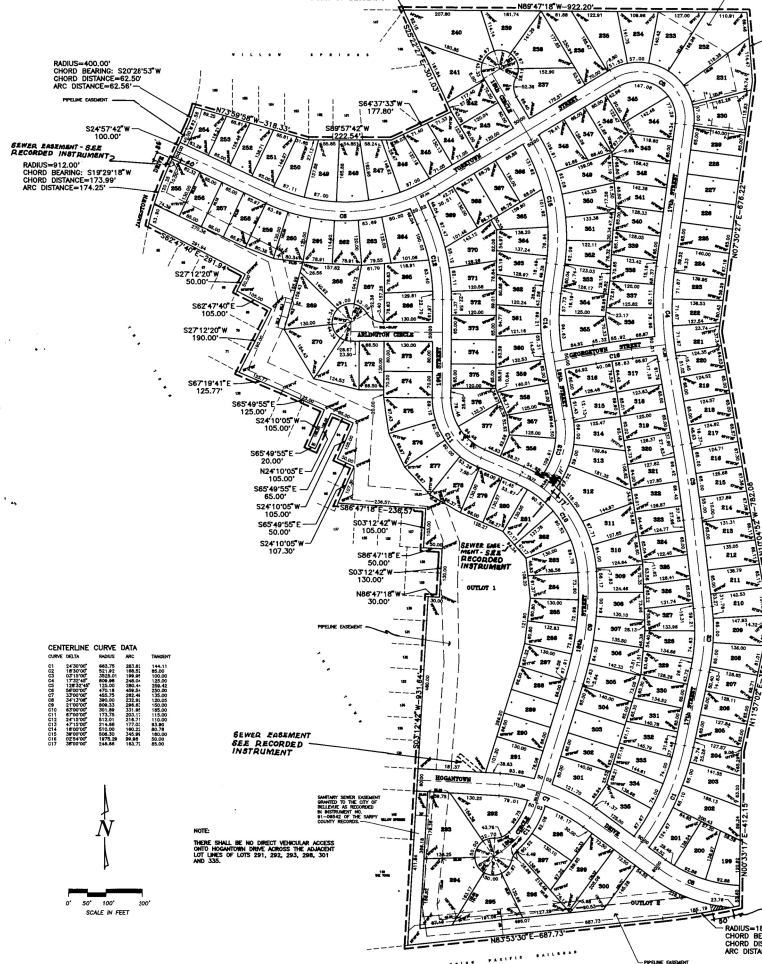


92-26050

WILLOW SPRINGS

LOTS 199 THRU 377, INCLUSIVE, AND OUTLOTS 1 AND 2,
BEING A PLATING OF PART OF THE SW 1/4 OF SECTION 27,
T14N, R15E OF THE 6TH P.M., SARPY COUNTY, NEBRASKA

POINT OF BEGINNING
189°47'18"W - 222.52'

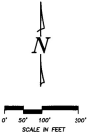


RADIUS=400.00'
CHORD BEARING: S20°28'53\"W
CHORD DISTANCE=62.20'
ARC DISTANCE=62.56'
PIVOT POINT

RADIUS=93.00'
CHORD BEARING: S11°23'18\"W
CHORD DISTANCE=17.33'
ARC DISTANCE=17.42'

CENTERLINE CURVE DATA

CHORD BEARS	ARC	TANGENT
01	0°00'00"	00.00
02	1°00'00"	1.74
03	2°00'00"	3.49
04	3°00'00"	5.24
05	4°00'00"	6.99
06	5°00'00"	8.74
07	6°00'00"	10.49
08	7°00'00"	12.24
09	8°00'00"	13.99
10	9°00'00"	15.74
11	10°00'00"	17.49
12	11°00'00"	19.24
13	12°00'00"	20.99
14	13°00'00"	22.74
15	14°00'00"	24.49
16	15°00'00"	26.24
17	16°00'00"	27.99
18	17°00'00"	29.74
19	18°00'00"	31.49
20	19°00'00"	33.24
21	20°00'00"	34.99
22	21°00'00"	36.74
23	22°00'00"	38.49
24	23°00'00"	40.24
25	24°00'00"	41.99
26	25°00'00"	43.74
27	26°00'00"	45.49
28	27°00'00"	47.24
29	28°00'00"	48.99
30	29°00'00"	50.74
31	30°00'00"	52.49
32	31°00'00"	54.24
33	32°00'00"	55.99
34	33°00'00"	57.74
35	34°00'00"	59.49
36	35°00'00"	61.24
37	36°00'00"	62.99
38	37°00'00"	64.74
39	38°00'00"	66.49
40	39°00'00"	68.24
41	40°00'00"	69.99
42	41°00'00"	71.74
43	42°00'00"	73.49
44	43°00'00"	75.24
45	44°00'00"	76.99
46	45°00'00"	78.74
47	46°00'00"	80.49
48	47°00'00"	82.24
49	48°00'00"	83.99
50	49°00'00"	85.74
51	50°00'00"	87.49
52	51°00'00"	89.24
53	52°00'00"	90.99
54	53°00'00"	92.74
55	54°00'00"	94.49
56	55°00'00"	96.24
57	56°00'00"	97.99
58	57°00'00"	99.74
59	58°00'00"	101.49
60	59°00'00"	103.24
61	60°00'00"	104.99
62	61°00'00"	106.74
63	62°00'00"	108.49
64	63°00'00"	110.24
65	64°00'00"	111.99
66	65°00'00"	113.74
67	66°00'00"	115.49
68	67°00'00"	117.24
69	68°00'00"	118.99
70	69°00'00"	120.74
71	70°00'00"	122.49
72	71°00'00"	124.24
73	72°00'00"	125.99
74	73°00'00"	127.74
75	74°00'00"	129.49
76	75°00'00"	131.24
77	76°00'00"	132.99
78	77°00'00"	134.74
79	78°00'00"	136.49
80	79°00'00"	138.24
81	80°00'00"	139.99
82	81°00'00"	141.74
83	82°00'00"	143.49
84	83°00'00"	145.24
85	84°00'00"	146.99
86	85°00'00"	148.74
87	86°00'00"	150.49
88	87°00'00"	152.24
89	88°00'00"	153.99
90	89°00'00"	155.74
91	90°00'00"	157.49
92	91°00'00"	159.24
93	92°00'00"	160.99
94	93°00'00"	162.74
95	94°00'00"	164.49
96	95°00'00"	166.24
97	96°00'00"	167.99
98	97°00'00"	169.74
99	98°00'00"	171.49
100	99°00'00"	173.24
101	100°00'00"	174.99



NOTE:
THERE SHALL BE NO DIRECT VEHICULAR ACCESS
OFF HIGHWAYS, STATE HIGHWAYS OR MAINSTAYS
FOR LOTS 291, 292, 293, 294, 301
AND 302.

SURVEYOR'S CERTIFICATE

I HEREBY CERTIFY THAT I HAVE MADE A PERSONAL VISUAL AND THAT THIS PLAT OR INSTRUMENT CORRECTLY SHOWS THE LOCATION OF ALL CORNERS AND POINTS OF BEGINNING AND ENDING OF THE PLAT, AND THAT THE AREA OF THE PLAT IS CORRECTLY SHOWN. I HAVE ALSO MADE A PERSONAL VISUAL AND THAT THIS PLAT OR INSTRUMENT CORRECTLY SHOWS THE LOCATION OF ALL CORNERS AND POINTS OF BEGINNING AND ENDING OF THE PLAT, AND THAT THE AREA OF THE PLAT IS CORRECTLY SHOWN. I HAVE ALSO MADE A PERSONAL VISUAL AND THAT THIS PLAT OR INSTRUMENT CORRECTLY SHOWS THE LOCATION OF ALL CORNERS AND POINTS OF BEGINNING AND ENDING OF THE PLAT, AND THAT THE AREA OF THE PLAT IS CORRECTLY SHOWN. I HAVE ALSO MADE A PERSONAL VISUAL AND THAT THIS PLAT OR INSTRUMENT CORRECTLY SHOWS THE LOCATION OF ALL CORNERS AND POINTS OF BEGINNING AND ENDING OF THE PLAT, AND THAT THE AREA OF THE PLAT IS CORRECTLY SHOWN.



WILM. P. DORNIER, REG. LAND SURV. 11111

STATE OF NEBRASKA

COUNTY OF SARPY

THE FOREGOING INSTRUMENT WAS ACKNOWLEDGED BEFORE ME this 27th day of August 1982 by Michael D. Dornier, Surveyor.

Michael D. Dornier

STATE OF NEBRASKA

COUNTY OF SARPY

THE FOREGOING INSTRUMENT WAS ACKNOWLEDGED BEFORE ME this 27th day of August 1982 by Michael D. Dornier, Surveyor.

APPROVAL OF RELIEVE CITY PLANNING COMMISSION

THE PLAT OF WILLOW SPRINGS WAS APPROVED BY THE RELIEVE CITY PLANNING COMMISSION this 27th day of August 1982.

APPROVAL OF RELIEVE CITY BOARD

THE PLAT OF WILLOW SPRINGS WAS APPROVED BY THE RELIEVE CITY BOARD this 27th day of August 1982.

NOTED BY SARPY COUNTY CLERK

THE PLAT OF WILLOW SPRINGS WAS RECEIVED BY THE SARPY COUNTY CLERK this 27th day of August 1982.

AS SHOWN	
DATE	5-27-82
BY	WPD
REVISION	
DATE	
BY	
REVISION	
DATE	
BY	
REVISION	

WILLOW SPRINGS

THOMPSON, DREESSEN & DORNER
Consulting Engineers & Land Surveyors
1888 OLD MILL ROAD
LINCOLN, NEBRASKA 68502
(402) 330-6888



26050

702