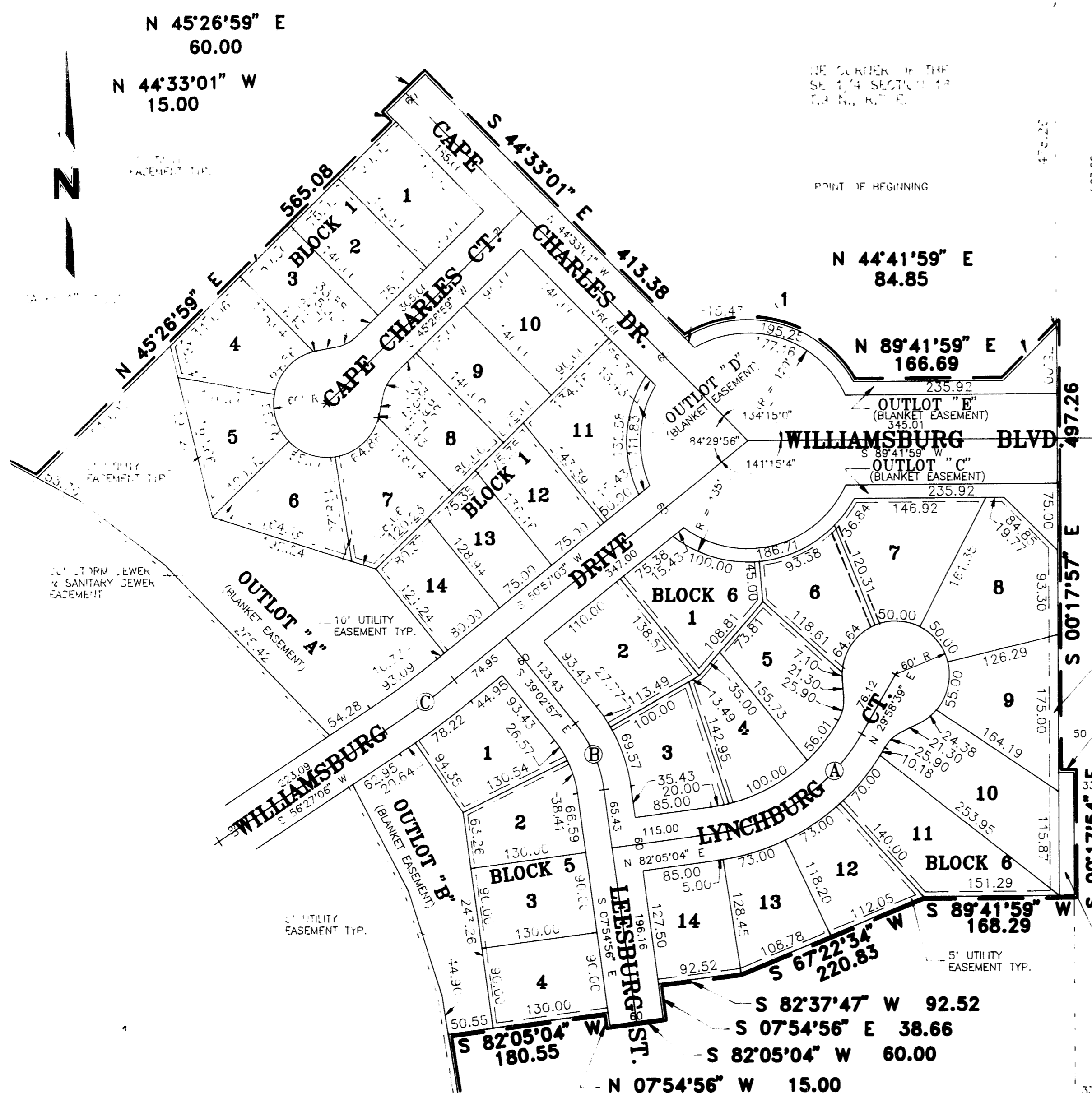


WILLIAMSBURG VILLAGE

FINAL PLAT



N 45°26'59" E
60.00
N 44°33'01" W
15.00

NE CORNER OF THE
SE 1/4 SECTION 11
T. 1 N., R. 1 E.

POINT OF BEGINNING

N 44°41'59" E
84.85

N 89°41'59" E
166.69

WILLIAMSBURG BLVD.

N 89°42'03" E
17.00

LYNCHBURG CT.

S 89°41'59" W
168.29

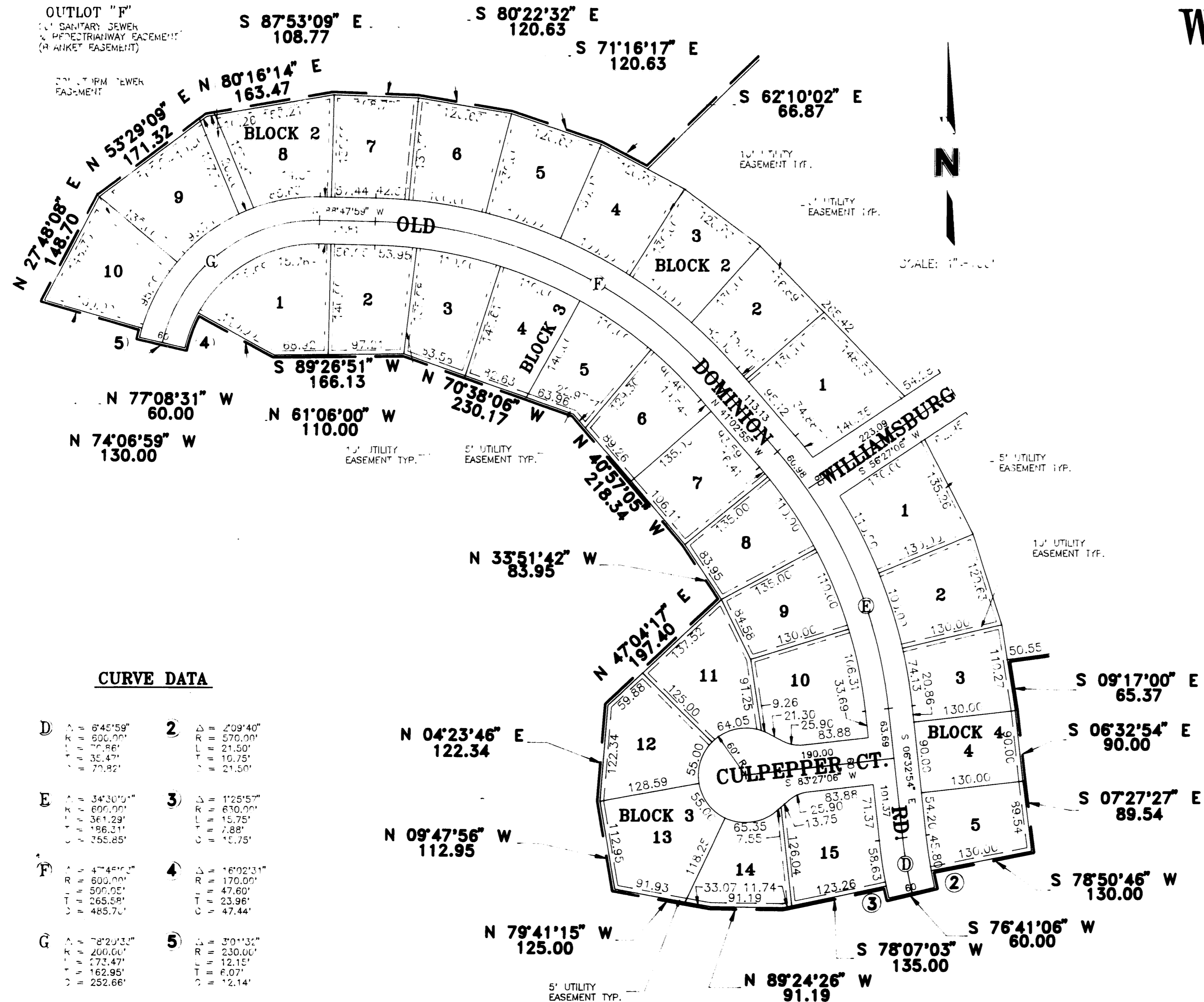
S 82°37'47" W 92.52
S 07°54'56" E 38.66
S 82°05'04" W 60.00
N 07°54'56" W 15.00

CURVE DATA

A	Δ = 52°06'25"
	R = 225.00'
	T = 204.62'
	L = 110.00'
	C = 197.64'
B	Δ = 31°08'01"
	R = 150.00'
	T = 81.51'
	L = 41.79'
	C = 80.51'
C	Δ = 5°30'03"
	R = 1000.00'
	T = 96.01'
	L = 48.04'
	C = 95.97'
1	Δ = 92°37'42"
	R = 135.00'
	T = 218.25'
	L = 141.34'
	C = 195.25'

DRIPPLE
CREEK
PINWOOD
LANE

WILLIAMSBURG VILLAGE FINAL PLAT



CURVE DATA

D	$\Delta = 6^{\circ}45'59''$ $R = 600.00'$ $L = 70.86'$ $T = 35.47'$ $C = 70.82'$	2	$\Delta = 2^{\circ}09'40''$ $R = 570.00'$ $L = 21.50'$ $T = 10.75'$ $C = 21.50'$
E	$\Delta = 34^{\circ}30'00''$ $R = 600.00'$ $L = 361.29'$ $T = 186.31'$ $C = 255.85'$	3	$\Delta = 1^{\circ}25'57''$ $R = 630.00'$ $L = 15.75'$ $T = 7.88'$ $C = 15.75'$
F	$\Delta = 4^{\circ}45'31''$ $R = 600.00'$ $L = 500.05'$ $T = 265.58'$ $C = 485.70'$	4	$\Delta = 16^{\circ}02'31''$ $R = 170.00'$ $L = 47.60'$ $T = 23.96'$ $C = 47.44'$
G	$\Delta = 78^{\circ}29'33''$ $R = 200.00'$ $L = 273.47'$ $T = 162.95'$ $C = 252.66'$	5	$\Delta = 3^{\circ}01'32''$ $R = 230.00'$ $L = 12.15'$ $T = 6.07'$ $C = 12.14'$

SURVEYORS CERTIFICATE

I HEREBY CERTIFY THAT I HAVE CAUSED TO BE SURVEYED THE SUBDIVISION TO BE KNOWN AS WILLIAMSBURG VILLAGE. A SUBDIVISION COMPOSED OF A PORTION OF LOT 8 I.T., ALL LOCATED IN THE SE 1/4 OF SECTION 18, T9N, R7E OF THE 6TH. P.M., LANCASTER COUNTY, NEBRASKA, AND MORE PARTICULARLY DESCRIBED AS FOLLOWS:

COMMENCING FROM THE NE CORNER OF SAID SE 1/4, THENCE ON AN ASSUMED BEARING OF S.89°59'53"W. ALONG THE NORTH LINE OF SAID SE 1/4 A DISTANCE OF 50.00' TO THE NE CORNER OF SAID LOT 8 I.T., THENCE S.0°17'57"E. ALONG THE EAST LINE OF SAID LOT 8 I.T. A DISTANCE OF 438.26' TO THE TRUE POINT OF BEGINNING, THENCE CONTINUING ALONG THE LAST DESCRIBED LINE A DISTANCE OF 497.26', THENCE N.89°42'03"E. ALONG THE EAST LINE OF SAID LOT 8 I.T. A DISTANCE OF 17.00', THENCE S.0°17'57"E. ALONG THE EAST LINE OF SAID LOT 8 I.T. A DISTANCE OF 136.91', THENCE S.89°41'59"W. A DISTANCE OF 168.29', THENCE S.67°22'34"W. A DISTANCE OF 220.83', THENCE S.82°37'47"W. A DISTANCE OF 92.52', THENCE S.7°54'56"E. A DISTANCE OF 38.66', THENCE S.82°05'04"W. A DISTANCE OF 60.00', THENCE N.7°54'56"W. A DISTANCE OF 15.00', THENCE S.82°05'04"W. A DISTANCE OF 180.55', THENCE S.9°17'00"E. A DISTANCE OF 65.37', THENCE S.6°32'54"E. A DISTANCE OF 90.00', THENCE S.7°27'27"E. A DISTANCE OF 89.54', THENCE S.78°50'46"W. A DISTANCE OF 130.00', THENCE ON A CURVE TO THE LEFT WHOSE RADIUS IS 570.00', A CENTRAL ANGLE OF 2°09'40", A ARC DISTANCE OF 21.50', AND A CHORD BEARING OF S.12°14'04"E., THENCE S.76°41'06"W. A DISTANCE OF 60.00', THENCE ON A CURVE TO THE RIGHT WHOSE RADIUS IS 630.00', A CENTRAL ANGLE OF 1°25'57", A ARC DISTANCE OF 15.75', AND A CHORD BEARING OF N.12°35'55"W., THENCE S.78°07'03"W. A DISTANCE OF 135.00', THENCE N.89°24'26"W. A DISTANCE OF 91.19', THENCE N.79°41'15"W. A DISTANCE OF 125.00', THENCE N.9°47'56"W. A DISTANCE OF 112.95', THENCE N.4°23'46"E. A DISTANCE OF 122.34', THENCE N.47°04'17"E. A DISTANCE OF 197.40', THENCE N.33°51'42"W. A DISTANCE OF 83.95', THENCE N.40°57'05"W. A DISTANCE OF 218.34', THENCE N.70°38'06"W. A DISTANCE OF 230.17', THENCE S.89°26'51"W. A DISTANCE OF 166.13', THENCE N.61°06'00"W. A DISTANCE OF 110.00', THENCE ON A CURVE TO THE LEFT WHOSE RADIUS IS 170.00', A CENTRAL ANGLE OF 16°02'31", A ARC DISTANCE OF 47.60', AND A CHORD BEARING OF S.20°52'44"W., THENCE N.77°08'31"W. A DISTANCE OF 60.00', THENCE ON A CURVE TO THE RIGHT WHOSE RADIUS IS 230.00', A CENTRAL ANGLE OF 3°01'32", A ARC DISTANCE OF 12.15', AND A CHORD BEARING OF N.14°22'15"E., THENCE N.74°06'59"W. A DISTANCE OF 130.00', THENCE N.27°48'08"E. A DISTANCE OF 148.70', THENCE N.53°29'09"E. A DISTANCE OF 171.32', THENCE N.80°16'14"E. A DISTANCE OF 163.47', THENCE S.87°53'09"E. A DISTANCE OF 108.77', THENCE S.80°22'32"E. A DISTANCE OF 120.63', THENCE S.71°16'17"E. A DISTANCE OF 120.63', THENCE S.62°10'02"E. A DISTANCE OF 66.87', THENCE N.45°26'59"E. A DISTANCE OF 565.08', THENCE N.44°33'01"W. A DISTANCE OF 15.00', THENCE N.45°26'59"E. A DISTANCE OF 60.00', THENCE S.44°33'01"E. A DISTANCE OF 413.38', THENCE ON A CURVE OF THE RIGHT WHOSE RADIUS IS 135.00', A CENTRAL ANGLE OF 92°37'42", A ARC DISTANCE OF 218.25', AND A CHORD BEARING OF S.75°23'48"E., THENCE N.89°41'59"E. A DISTANCE OF 166.69', THENCE N.44°41'59"E. A DISTANCE OF 84.85' TO THE POINT OF BEGINNING. SAID TRACT CONTAINS A CALCULATED AREA OF 29.00 ACRES MORE OR LESS. PERMANENT MONUMENTS HAVE BEEN FOUND OR SET AT ALL BOUNDARY CORNERS, STREET INTERSECTIONS, BLOCK CORNERS, POINTS OF TANGENCY AND CURVATURE AS SHOWN ON THE PLAT IN ACCORDANCE WITH TITLE 26 OF THE LINCOLN MUNICIPAL CODE. TEMPORARY MARKERS HAVE BEEN PLACED AT ALL LOT CORNERS AND THE OWNER WILL FURNISH TO THE CITY OF LINCOLN A STAKING BOND TO INSURE THE PLACING OF PERMANENT MONUMENTS AT ALL SUCH LOT CORNERS PRIOR TO THE CONSTRUCTION OR CONVEYANCE OF ANY LOT SHOWN ON THIS PLAT. ALL DIMENSIONS ARE CHORD MEASUREMENTS UNLESS OTHERWISE SHOWN AND ARE IN FEET AND DECIMALS OF A FOOT.

JAN 23RD 1990
DATE

Thomas Bruggeman
THOMAS BRUGGEMAN
OLSSON ASSOCIATES
611 NBC CENTER
LINCOLN, NE. 68508

454
L.S. NUMBER

DEDICATION

THE FOREGOING PLAT, IS KNOWN AS WILLIAMSBURG VILLAGE A SUBDIVISION COMPOSED OF A PORTION OF LOT 8 I.T., LOCATED IN THE SE 1/4 OF SECTION 18 T9N, R7E, OF THE 6TH PM LANCASTER COUNTY, NEBRASKA, AND IS MORE PARTICULARLY DESCRIBED IN THE SURVEYOR'S CERTIFICATE. THIS DEDICATION IS MADE WITH THE FREE CONSENT AND IN ACCORDANCE WITH THE DESIRES OF THE UNDERSIGNED, SOLE OWNER(S), AND THE EASEMENTS SHOWN THEREON ARE HEREBY GRANTED IN PERPETUITY TO THE CITY OF LINCOLN, NEBRASKA, THE LINCOLN TELEPHONE AND TELEGRAPH COMPANY, TV TRANSMISSION, INC., MINNEGASCO, THEIR SUCCESSORS AND ASSIGNS, TO ALLOW ENTRY FOR THE PURPOSE OF CONSTRUCTION, RECONSTRUCTION, REPLACEMENT, REPAIR, OPERATION AND MAINTENANCE OF WIRES, CABLES, CONDUITS, FIXTURES, POLES, TOWERS, PIPES, AND EQUIPMENT FOR THE DISTRIBUTION OF ELECTRICITY AND GAS; TELEPHONE AND CABLE TELEVISION; WASTEWATER COLLECTORS; STORM DRAINS; WATER MAINS AND ALL APPURTENANCES THERETO, OVER, UPON, OR UNDER THE EASEMENTS AS SHOWN ON THE FOREGOING PLAT.

THE CONSTRUCTION OR LOCATION OF ANY BUILDING OR STRUCTURE, EXCLUDING FENCES, OVER, UPON, OR UNDER ANY EASEMENT SHOWN THEREON SHALL BE PROHIBITED.

THE CONSTRUCTION OR LOCATION OF ANY FENCE OF OTHER IMPROVEMENT WHICH OBSTRUCTS DRAINAGE SHALL BE PROHIBITED OVER, UPON, OR UNDER ANY STORM DRAIN EASEMENT OR DRAINAGE EASEMENT SHOWN THEREON.

THE CITY OF LINCOLN, ITS SUCCESSORS OR ASSIGNS ARE HEREBY HELD HARMLESS FOR THE COST OF REPLACEMENT OR DAMAGE TO ANY IMPROVEMENT OR VEGETATION OVER, UPON, OR UNDER ANY EASEMENT SHOWN THEREON.

THE STREETS SHOWN ARE HEREBY DEDICATED TO THE PUBLIC. THE ACCESS EASEMENTS AND THE PEDESTRIAN WAY EASEMENTS SHOWN THEREON SHALL BE USED FOR PUBLIC ACCESS AND THE PUBLIC IS HEREBY GRANTED THE RIGHT OF SUCH USE.

THE RIGHT OF DIRECT VEHICULAR ACCESS TO SOUTH 40TH STREET FROM LOTS ABUTTING SAID STREET, AND ACCESS TO WILLIAMSBURG BLVD. FROM OUTLOTS "C", "D", AND "E" ABUTTING SAID STREET IS HEREBY RELINQUISHED.

WITNESS MY HAND THIS 24 DAY OF January 1990.

Robert Hampton
R.J.L. DEVELOPMENT SOUTH LTD
ROBERT HAMPTON, PRESIDENT

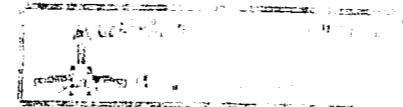
ACKNOWLEDGEMENT OF NOTARY

STATE OF NEBRASKA
COUNTY OF LANCASTER

ON THIS 24TH DAY OF JANUARY 1990, BEFORE ME, THE UNDERSIGNED, A NOTARY PUBLIC, DULY COMMISSIONED, QUALIFIED IN AND FOR SAID COUNTY AND STATE, PERSONALLY CAME ROBERT HAMPTON WHO IS PERSONALLY KNOWN TO ME TO BE THE IDENTICAL PERSON WHOSE NAME IS AFFIXED TO THIS PLAT AS PRESIDENT OF R.J.L. DEVELOPMENT SOUTH LTD, AND HE ACKNOWLEDGES THE EXECUTION THEREOF TO BE HIS VOLUNTARY ACT AND DEED AND THE VOLUNTARY ACT AND DEED OF SAID COMPANY.

MY COMMISSION EXPIRES ON THE 26TH DAY OF JUNE 1993 A.D.

Thomas Bruggeman
NOTARY PUBLIC



**WILLIAMSBURG
VILLAGE
FINAL PLAT**

ACCEPTANCE

THE FOREGOING PLAT AND DEDICATION APPROVED AND ACCEPTED BY THE CITY COUNCIL OF THE CITY OF LINCOLN, NEBRASKA BY ORDINANCE NO. 15486 PASSED THE DAY OF MARCH 5 1990.

ATTEST: Paula A. Witzke, Jr.
CITY CLERK

APPROVAL

THE FOREGOING PLAT WAS APPROVED BY THE CITY-LANCASTER COUNTY PLANNING COMMISSION ON THIS 10TH DAY OF January 1990.

ATTEST: R.L. Bell
CHAIRMAN

FILED FOR RECORD
A-172
A-172-A
2312
#6400