

2013-33856

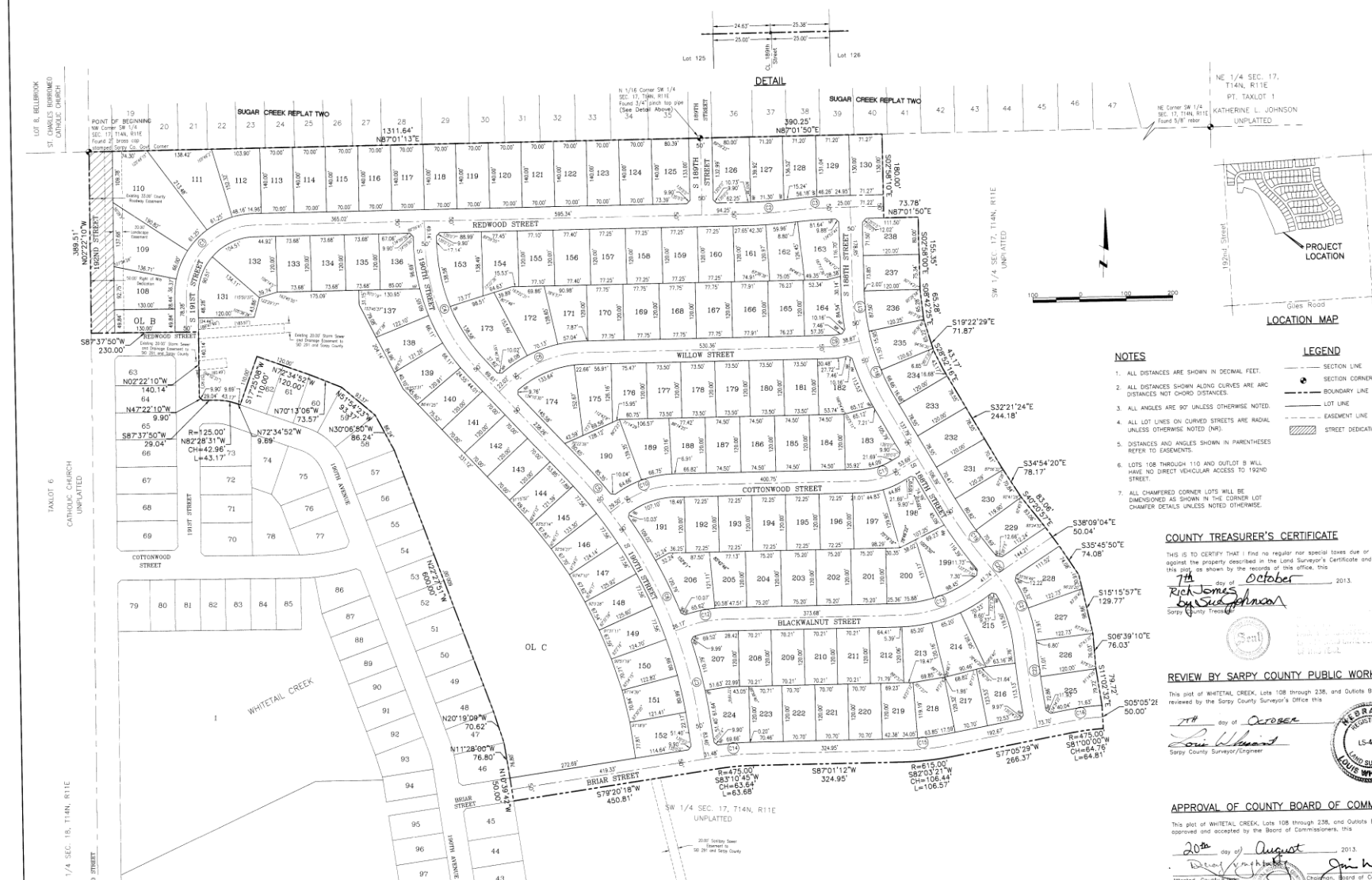
FILED SARY COUNTY NEBRASKA
INSTRUMENT NUMBER
2013-33856
11/01/2013 2:16:08 PM
REGISTER OF DEEDS

Drawn by	W. E. Larson
Designed by	W. E. Larson
Reviewed by	W. E. Larson
Checked by	W. E. Larson
Approved by	W. E. Larson
Recorded by	W. E. Larson
Registered by	W. E. Larson

WHITETAIL CREEK

Lots 108 through 238, and Outlots B and C, being a platting of that part of the Southwest Quarter of Section 17, Township 14 North, Range 11 East of the 6th P.M., Sary County, Nebraska

LOCATED IN:
SW 1/4, SEC. 17, T14N, R11E



LAND SURVEYOR'S CERTIFICATE

I HEREBY CERTIFY THAT I have made a boundary survey of the subdivision herein and that permanent monuments have been placed at all corners, single points and ends of curves on the boundary of the plat and that permanent monuments will be placed at all corners, single points and ends of curves on all lots and streets within the subdivision to be known as WHITETAIL CREEK, Lots 108 through 238 and Outlots B and C being a platting of that part of the Southwest Quarter of Section 17, Township 14 North, Range 11 East of the 6th P.M., Sary County, Nebraska, abstract 68154-2027.

Thence North 87°01'50" East (bearing referenced to Nebraska state plane NAD83 for 1311.64 feet along the north line of said Southwest Quarter to the North 1/16 corner of said Southwest Quarter of Section 17);

Thence North 87°01'50" East for 390.25 feet continuing along the north line of said Southwest Quarter of Section 17;

Thence South 02°28'10" East for 180.00 feet;

Thence North 87°01'50" East for 73.76 feet;

Thence South 02°28'10" East for 45.28 feet;

Thence North 87°01'50" East for 71.87 feet;

Thence South 02°28'10" East for 43.17 feet;

Thence North 87°01'50" East for 244.18 feet;

Thence South 34°24'00" East for 78.17 feet;

Thence South 40°20'57" East for 83.08 feet;

Thence South 30°28'04" East for 127.71 feet;

Thence South 35°45'50" East for 74.08 feet;

Thence South 30°28'04" East for 127.71 feet;

Thence South 08°39'10" East for 76.03 feet;

Thence North 11°52'07" West for 52.77 feet;

Thence South 05°25'28" East for 52.00 feet;

Thence along a curve to the left having a radius of 475.00 feet and a long chord bearing South 81°00'00" West for 64.76 feet for an arc length of 64.81 feet;

Thence along a curve to the right having a radius of 415.00 feet and a long chord bearing South 82°02'11" West for 104.44 feet for an arc length of 104.57 feet;

Thence South 87°01'50" West for 234.95 feet;

Thence along a curve to the left having a radius of 475.00 feet and a long chord bearing South 87°01'45" West for 63.64 feet for an arc length of 63.68 feet;

Thence North 12°39'42" West for 50.00 feet;

Thence North 11°28'00" West for 76.80 feet;

Thence North 02°06'50" West for 110.00 feet;

Thence North 51°54'31" West for 93.37 feet;

Thence North 72°34'52" West for 120.00 feet;

Thence North 72°34'52" West for 110.00 feet;

Thence North 72°34'52" West for 8.69 feet;

Thence along a curve to the left having a radius of 125.00 feet and a long chord bearing North 82°38'31" West for 42.96 feet for an arc length of 43.17 feet;

Thence South 02°22'10" West for 28.04 feet;

Thence North 47°22'10" West for 9.90 feet;

Thence South 87°37'50" West for 230.00 feet to the west line of said Southwest Quarter of Section 17;

Thence North 02°22'10" West for 388.51 feet along said west line to the Point of Beginning.

Course 45.140 acres

NOTES

- ALL DISTANCES ARE SHOWN IN DECIMAL FEET.
- ALL DISTANCES SHOWN ALONG CURVES ARE ARC DISTANCES UNLESS OTHERWISE NOTED.
- ALL ANGLES ARE 90° UNLESS OTHERWISE NOTED.
- ALL LOT LINES ON CURVED STREETS ARE RADIAL UNLESS OTHERWISE NOTED (NAD).
- DISTANCES AND ANGLES SHOWN IN PARENTHESES REFER TO EASEMENTS.
- LOTS 108 THROUGH 110 AND OUTLOT B WILL HAVE NO DIRECT VEHICULAR ACCESS TO 152ND STREET.
- ALL CHAMFERED CORNER LOTS WILL BE DIMENSIONED AS SHOWN IN THE CORNER LOT CHAMFER DETAILS UNLESS NOTED OTHERWISE.

LEGEND

- SECTION LINE
- SECTION CORNER
- BOUNDARY LINE
- LOT LINE
- EASEMENT LINE
- STREET DEDICATION

COUNTY TREASURER'S CERTIFICATE

THIS IS TO CERTIFY THAT I find no regular nor special taxes due or delinquent against the property described in the Land Surveyor's Certificate and endorsed in this plat as shown by the records of this office, this

7th day of October 2013.

Richard J. Johnson
Sary County Treasurer

REVIEW BY SARY COUNTY PUBLIC WORKS

This plat of WHITETAIL CREEK, Lots 108 through 238, and Outlots B and C was reviewed by the Sary County Surveyor's Office this

7th day of October 2013.

Lois Williams
Sary County Surveyor/Engineer

APPROVAL OF COUNTY BOARD OF COMMISSIONERS

This plat of WHITETAIL CREEK, Lots 108 through 238, and Outlots B and C was approved and accepted by the Board of Commissioners, this

20th day of August 2013.

David J. White
Chairman, County Board of Commissioners

APPROVAL OF COUNTY PLANNING DIRECTOR

This plat of WHITETAIL CREEK, Lots 108 through 238, and Outlots B and C was approved and accepted by the County Planning Director on this

31st day of October 2013.

Christy
County Planning Director

APPROVAL OF COUNTY PLANNING COMMISSION

This plat of WHITETAIL CREEK, Lots 108 through 238, and Outlots B and C was approved and accepted by the County Planning Commission on this

11th day of March 2013.

Douglas L. White
Chairman, County Planning Commission

ACKNOWLEDGEMENT OF NOTARY

State of Nebraska)
County of Sary)
I, the foregoing instrument was acknowledged before me this

4th day of October 2013

by CHAD LARSEN, Vice President
of CELEBRITY HOMES INC. on behalf of the corporation.

Signature of Notary Public

Centerline Curve Table

Curve #	Radius	Arc Length	Chord Length	Chord Bearing	Delta Angle
C1	150.00	234.02	211.00	N42°18'31"E	089°23'23"
C2	1000.00	99.76	99.72	N81°03'44"E	005°43'28"
C3	1000.00	99.94	99.90	N81°03'44"E	005°43'28"
C4	400.00	295.64	288.56	S24°08'54"E	042°20'51"
C5	1000.00	114.49	114.43	S42°02'32"E	008°33'30"
C6	1000.00	291.01	289.98	S30°25'21"E	016°40'25"
C7	1000.00	199.44	199.11	S16°22'31"E	011°25'38"
C8	250.00	184.75	180.58	N65°50'54"E	042°20'32"
C9	100.00	22.18	22.13	N87°40'00"E	012°42'24"
C10	200.00	124.90	122.88	N69°07'44"E	032°48'53"
C11	150.00	199.44	199.11	N72°19'54"E	029°22'30"
C12	250.00	83.38	82.99	N77°27'54"E	019°08'32"
C13	300.00	192.17	187.51	N69°11'32"E	036°19'14"
C14	500.00	370.04	366.99	N83°10'40"E	007°40'34"
C15	500.00	102.24	102.11	N82°03'21"E	009°25'43"
C16	500.00	68.22	68.17	N81°00'00"E	007°49'02"
C17	500.00	111.00	110.77	S09°19'36"E	012°43'12"
C18	500.00	145.48	144.96	S24°01'18"E	016°40'13"
C19	1000.00	177.84	177.70	S37°27'15"E	010°11'42"
C20	300.00	17.02	17.02	S40°50'34"E	003°19'04"
C21	300.00	180.31	183.23	S23°30'51"E	031°54'22"
C22	186.58	179.62	179.58	S10°19'08"E	008°10'30"

Parcel Table

Parcel #	Area (SF)	Parcel #	Area (SF)	Parcel #	Area (SF)	Parcel #	Area (SF)
108	10322	142	8400	176	8800	212	8400
109	10322	143	8400	177	8800	213	8400
110	10322	144	8400	178	8800	214	8400
111	10322	145	8400	179	8800	215	11468
112	10322	146	8400	180	8800	216	8400
113	10322	147	8400	181	8800	217	8400
114	10322	148	8400	182	8800	218	8400
115	10322	149	8400	183	8800	219	8400
116	10322	150	8400	184	8800	220	8400
117	10322	151	8400	185	8800	221	8400
118	10322	152	8400	186	8800	222	8400
119	10322	153	8400	187	8800	223	8400
120	10322	154	8400	188	8800	224	8400
121	10322	155	8400	189	8800	225	8400
122	10322	156	8400	190	8800	226	8400
123	10322	157	8400	191	8800	227	8400
124	10322	158	8400	192	8800	228	8400
125	10322	159	8400	193	8800	229	8400
126	10322	160	8400	194	8800	230	8400
127	10322	161	8400	195	8800	231	8400
128	10322	162	8400	196	8800	232	8400
129	10322	163	8400	197	8800	233	8400
130	10322	164	8400	198	8800	234	8400
131	10322	165	8400	199	8800	235	8400
132	10322	166	8400	200	8800	236	8400
133	10322	167	8400	201	8800	237	8400
134	10322	168	8400	202	8800	238	8400
135	10322	169	8400	203	8800	239	8400
136	10322	170	8400	204	8800	240	8400
137	10322	171	8400	205	8800	241	8400
138	10322	172	8400	206	8800	242	8400
139	10322	173	8400	207	8800	243	8400
140	10322	174	8400	208	8800	244	8400
141	10322	175	8400	209	8800	245	8400
142	10322	176	8400	210	8800	246	8400
143	10322	177	8400	211	8800	247	8400
144	10322	178	8400	212	8800	248	8400
145	10322	179	8400	213	8800	249	8400
146	10322	180	8400	214	8800	250	8400
147	10322	181	8400	215	8800	251	8400
148	10322	182	8400	216	8800	252	8400
149	10322	183	8400	217	8800	253	8400
150	10322	184	8400	218	8800	254	8400
151	10322	185	8400	219	8800	255	8400
152	10322	186	8400	220	8800	256	8400
153	10322	187	8400	221	8800	257	8400
154	10322	188	8400	222	8800	258	8400
155	10322	189	8400	223	8800	259	8400
156	10322	190	8400	224	8800	260	8400
157	10322	191	8400	225	8800	261	8400
158	10322	192	8400	226	8800	262	8400
159	10322	193	8400	227	8800	263	8400
160	10322	194	8400	228	8800	264	8400
161	10322	195	8400	229	8800	265	8400
162	10322	196	8400	230	8800	266	8400
163	10322	197	8400	231	8800	267	8400
164	10322	198	8400	232	8800	268	8400
165	10322	199	8400	233	8800	269	8400
166	10322	200	8400	234	8800	270	8400
167	10322	201	8400	235	8800	271	8400
168	10322	202	8400	236	8800	272	8400
169	10322	203	8400	237	8800	273	8400
170	10322	204	8400	238	8800	274	8400
171	10322	205	8400	239	8800	275	8400
172	10322	206	8400	240	8800	276	8400
173	10322	207	8400	241	8800	277	8400
174	10322	208	8400	242	8800	278	8400
175	10322	209	8400	243	8800	279	8400
176	10322	210	8400	244	8800	280	8400
177	10322	211	8400	245	8800	281	8400
178	10322	212	8400	246	8800	282	8400
179	10322	213	8400	247	8800	283	8400
180	10322	214	8400	248	8800	284	8400
181	10322	215	8400	249	8800	285	8400
182	10322	216	8400	250	8800	286	8400
183	10322	217	8400	251	8800	287	8400
184	10322	218	8400	252	8800	288	8400
185	10322	219	8400	253	8800	289	8400
186	10322	220	8400	254	8800	290	8400
187	10322	221	8400	255	8800	291	8400
188	10322	222	8400	256	8800	292	8400
189	10322	223	8400	257	8800	293	8400
190	10322	224	8400	258	8800	294	8400
191	10322	225	8400	259	8800	295	8400
192	10322	226	8400	260	8800	296	8400
193	10322	227	8400	261	8800	297	8400
194	10322	228	8400	262	8800	298	8400
195	10322	229	8400	263	8800	299	8400
196	10322	230	8400	264	8800	300	8400
197	10322	231	8400	265	8800	301	8400
198	10322	232	8400	266	8800	302	8400
199	10322	233	8400	267	8800	303	8400
200	10322	234	8400	268	8800	304	8400
201	10322	235	8400	269	8800	305	8400
202	10322	236	8400	270	8800	306	8400
203	10322	237	8400	271	8800	307	8400
204	10322	238	8400	272	8800	308	8400
205	10322	239	8400	273	8800	309	8400
206	10322	240	8400	274	8800	310	8400
207	10322	241	8400	275	8800	311	8400
208	10322	242	8400	276	8800	312	8400
209	10322						