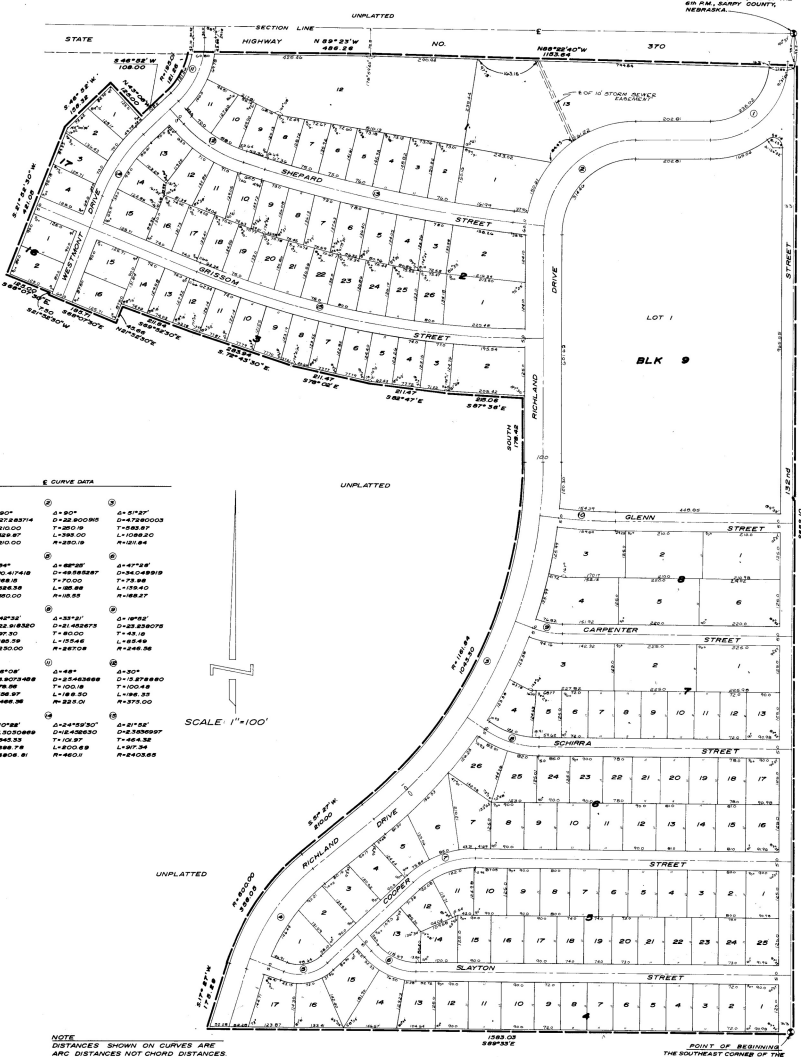


WESTMONT

LOTS 1 THRU 13, INCLUSIVE, BLOCK 1, LOTS 1 THRU 26, INCLUSIVE, BLOCK 2, LOTS 2 THRU 16, INCLUSIVE, BLOCK 3, LOTS 1 THRU 17, INCLUSIVE, BLOCK 4, LOTS 1 THRU 25, INCLUSIVE, BLOCK 5; LOTS 1 THRU 26, INCLUSIVE, BLOCK 6; LOTS 1 THRU 13, INCLUSIVE, BLOCK 7, LOTS 1 THRU 6, INCLUSIVE, BLOCK 8; LOT 1, BLOCK 9; LOT 1 AND 2, BLOCK 16; LOTS 1 THRU 4, INCLUSIVE, BLOCK 17, BEING A PLATTING OF PART OF THE NE 1/4 OF SECTION 36, T4N, R1E, OF THE 6TH PM., SARY COUNTY, NEBRASKA.



CURVE DATA

① A=20° D=28837' L=4100' M=820.00	② A=20° D=28800' L=4080' M=816.00	③ A=23°27' D=47280' L=7082' M=1416.40	④ A=23°27' D=47280' L=7082' M=1416.40	⑤ A=23°27' D=47280' L=7082' M=1416.40	⑥ A=23°27' D=47280' L=7082' M=1416.40
⑦ A=23°27' D=47280' L=7082' M=1416.40	⑧ A=23°27' D=47280' L=7082' M=1416.40	⑨ A=23°27' D=47280' L=7082' M=1416.40	⑩ A=23°27' D=47280' L=7082' M=1416.40	⑪ A=23°27' D=47280' L=7082' M=1416.40	⑫ A=23°27' D=47280' L=7082' M=1416.40
⑬ A=23°27' D=47280' L=7082' M=1416.40	⑭ A=23°27' D=47280' L=7082' M=1416.40	⑮ A=23°27' D=47280' L=7082' M=1416.40	⑯ A=23°27' D=47280' L=7082' M=1416.40	⑰ A=23°27' D=47280' L=7082' M=1416.40	⑱ A=23°27' D=47280' L=7082' M=1416.40
⑲ A=23°27' D=47280' L=7082' M=1416.40	⑳ A=23°27' D=47280' L=7082' M=1416.40	㉑ A=23°27' D=47280' L=7082' M=1416.40	㉒ A=23°27' D=47280' L=7082' M=1416.40	㉓ A=23°27' D=47280' L=7082' M=1416.40	㉔ A=23°27' D=47280' L=7082' M=1416.40
㉕ A=23°27' D=47280' L=7082' M=1416.40	㉖ A=23°27' D=47280' L=7082' M=1416.40	㉗ A=23°27' D=47280' L=7082' M=1416.40	㉘ A=23°27' D=47280' L=7082' M=1416.40	㉙ A=23°27' D=47280' L=7082' M=1416.40	㉚ A=23°27' D=47280' L=7082' M=1416.40



SUBJECT MATTER
I HEREBY CERTIFY that I have accurately surveyed and staked, with iron pipe, all corners of all lots, streets, angle points, and ends of all curves in WESTMONT, Lots 1 thru 13, inclusive, Block 1; Lots 1 thru 26, inclusive, Block 2; Lots 2 thru 16, inclusive, Block 3; Lots 1 thru 17, inclusive, Block 4; Lots 1 thru 25, inclusive, Block 5; Lots 1 thru 26, inclusive, Block 6; Lots 1 thru 13, inclusive, Block 7; Lots 1 thru 6, inclusive, Block 8; Lot 1, Block 9; Lot 1 and 2, Block 16; Lots 1 thru 4, inclusive, Block 17, BEING A PLATTING OF PART OF THE NE 1/4 OF SECTION 36, T4N, R1E, OF THE 6TH PM., SARY COUNTY, NEBRASKA, BEING A PLATTING OF PART OF THE NE 1/4 OF SECTION 36, T4N, R1E, OF THE 6TH PM., SARY COUNTY, NEBRASKA.

10-28-63
William J. Replogle
Surveyor

APPROVAL OF BOARD OF COMMISSIONERS
This plat of WESTMONT was approved and accepted by the Board of Commissioners, Sary County, Nebraska, this 26th day of November, 1963.

APPROVAL OF SARY COUNTY CLERK
I hereby certify that the record of a deed or other instrument upon the premises described in the foregoing plat of WESTMONT was recorded in the Sary County Clerk's Office on this 26th day of November, 1963.

APPROVAL OF BUILDING INSPECTOR
This plat of WESTMONT was approved by the Sary County Building Inspector this 26th day of November, 1963.

STATE OF NEBRASKA
COUNTY OF SARY
I, the undersigned, County Clerk of Sary County, Nebraska, do hereby certify that the foregoing plat of WESTMONT was recorded in the Sary County Clerk's Office on this 26th day of November, 1963.

STATE OF NEBRASKA
COUNTY OF SARY
I, the undersigned, County Clerk of Sary County, Nebraska, do hereby certify that the foregoing plat of WESTMONT was recorded in the Sary County Clerk's Office on this 26th day of November, 1963.

STATE OF NEBRASKA
COUNTY OF SARY
I, the undersigned, County Clerk of Sary County, Nebraska, do hereby certify that the foregoing plat of WESTMONT was recorded in the Sary County Clerk's Office on this 26th day of November, 1963.

STATE OF NEBRASKA
COUNTY OF SARY
I, the undersigned, County Clerk of Sary County, Nebraska, do hereby certify that the foregoing plat of WESTMONT was recorded in the Sary County Clerk's Office on this 26th day of November, 1963.

STATE OF NEBRASKA
COUNTY OF SARY
I, the undersigned, County Clerk of Sary County, Nebraska, do hereby certify that the foregoing plat of WESTMONT was recorded in the Sary County Clerk's Office on this 26th day of November, 1963.

STATE OF NEBRASKA
COUNTY OF SARY
I, the undersigned, County Clerk of Sary County, Nebraska, do hereby certify that the foregoing plat of WESTMONT was recorded in the Sary County Clerk's Office on this 26th day of November, 1963.

STATE OF NEBRASKA
COUNTY OF SARY
I, the undersigned, County Clerk of Sary County, Nebraska, do hereby certify that the foregoing plat of WESTMONT was recorded in the Sary County Clerk's Office on this 26th day of November, 1963.

STATE OF NEBRASKA
COUNTY OF SARY
I, the undersigned, County Clerk of Sary County, Nebraska, do hereby certify that the foregoing plat of WESTMONT was recorded in the Sary County Clerk's Office on this 26th day of November, 1963.

STATE OF NEBRASKA
COUNTY OF SARY
I, the undersigned, County Clerk of Sary County, Nebraska, do hereby certify that the foregoing plat of WESTMONT was recorded in the Sary County Clerk's Office on this 26th day of November, 1963.

STATE OF NEBRASKA
COUNTY OF SARY
I, the undersigned, County Clerk of Sary County, Nebraska, do hereby certify that the foregoing plat of WESTMONT was recorded in the Sary County Clerk's Office on this 26th day of November, 1963.