

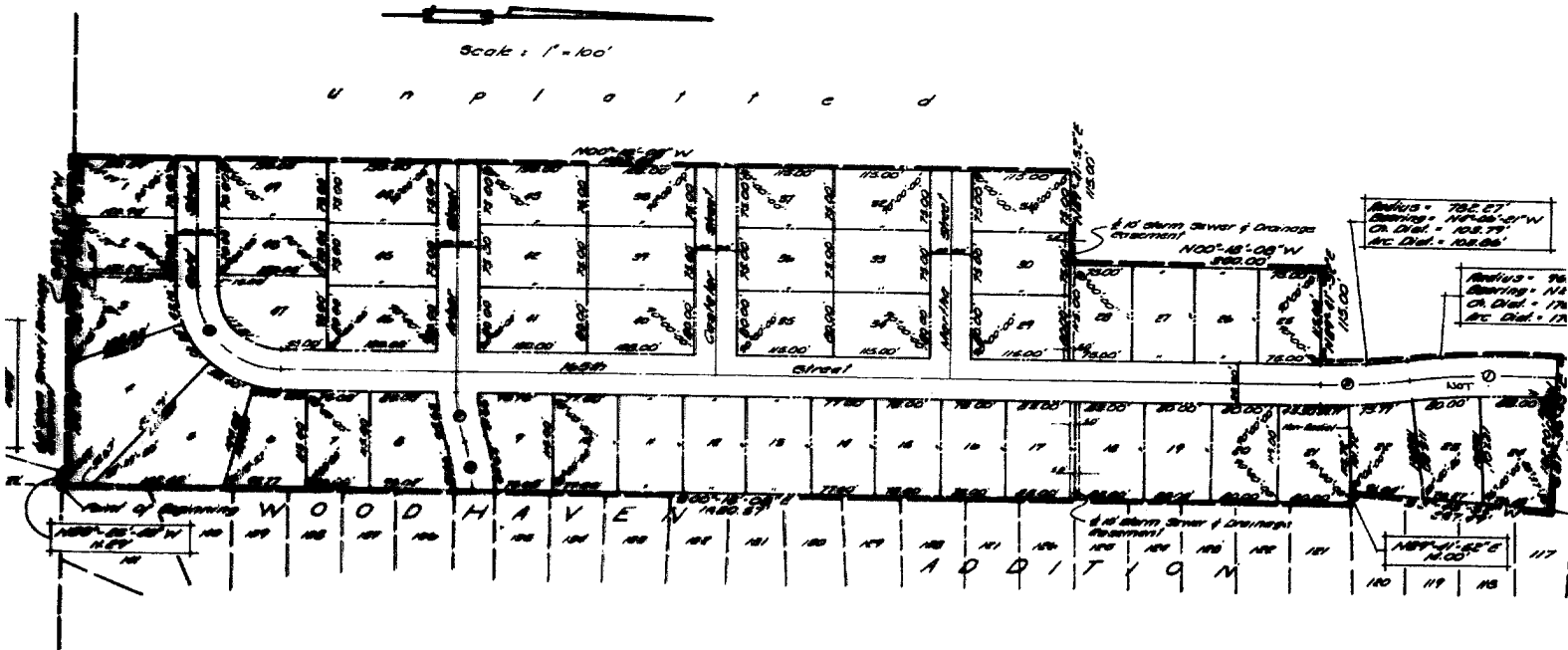
# WESTERN TRAILS II

Lots 1 Through 49, Inclusive

Being A Platting of Part of the SW<sup>1</sup>/<sub>4</sub> of Section 27, T15N, R11E of the 6th P.M., Douglas County, Nebraska.



Southwest Corner of Section 27,  
T15N, R11E of the 6th P.M.,  
Douglas County, Nebraska.



Centerline Curve Data

1. A - 15°-30'-00"	2. A - 7°-36'-20"
D - 4.67956	D - 7.077656
T - 30.87	T - 38.67
L - 172.80'	L - 107.16'
R - 908.67'	R - 807.27'

3. A - 10°-00'-00"	4. A - 11°-52'-30"
D - 57.2758	D - 68.59565
T - 100.00'	T - 95.0'
L - 187.08'	L - 58.15'
R - 100.00'	R - 262.87'

Note  
Dimensions Shown on Curves are Arc Dimensions.

36 15:50  
ENTERED IN NUMERICAL INDEX AND RECORDED IN THE REGISTER OF DEEDS OFFICE IN DOUGLAS COUNTY, NEB.  
1 DAY OF February 17 1944 A. C. HAROLD OSTER, REC'D

