

**WESTERN HILLS**  
LOTS 1 THRU 178 INCLUSIVE FROM, WISE OF THE 6th P.M.  
CITY OF HAWAII, COUNTY OF HONOLULU

**EXHIBIT A**

**APPROVED BY THE BOARD OF SUPERVISORS**  
City of Honolulu, County of Honolulu

**APPROVED BY THE DISTRICT DIRECTOR**  
District of Honolulu, County of Honolulu

**APPROVED BY THE CITY ENGINEER**  
City of Honolulu, County of Honolulu

**APPROVED BY THE DISTRICT ENGINEER**  
District of Honolulu, County of Honolulu

**APPROVED BY THE COUNTY ENGINEER**  
County of Honolulu

**APPROVED BY THE DISTRICT COMMISSIONER**  
District of Honolulu, County of Honolulu

**APPROVED BY THE COUNTY COMMISSIONER**  
County of Honolulu

**APPROVED BY THE DISTRICT ATTORNEY**  
District of Honolulu, County of Honolulu

**APPROVED BY THE COUNTY ATTORNEY**  
County of Honolulu

**SECTION I: GENERAL PROVISIONS**

1. THESE LOTS ARE TO BE USED FOR RESIDENTIAL PURPOSES AS SHOWN ON THE PLANS HEREBY FILED AND TO BE SUBJECT TO THE CITY OF HAWAII ZONING ORDINANCE, AS AMENDED FROM TIME TO TIME.

2. THE CITY OF HAWAII ENGINEER HAS REVIEWED THE PLANS AND FINDS THEM TO BE IN ACCORDANCE WITH THE CITY OF HAWAII ENGINEERING REGULATIONS AND STANDARDS.

3. THE DISTRICT DIRECTOR HAS REVIEWED THE PLANS AND FINDS THEM TO BE IN ACCORDANCE WITH THE DISTRICT ENGINEERING REGULATIONS AND STANDARDS.

4. THE COUNTY ENGINEER HAS REVIEWED THE PLANS AND FINDS THEM TO BE IN ACCORDANCE WITH THE COUNTY ENGINEERING REGULATIONS AND STANDARDS.

5. THE DISTRICT COMMISSIONER HAS REVIEWED THE PLANS AND FINDS THEM TO BE IN ACCORDANCE WITH THE DISTRICT COMMISSIONER'S REGULATIONS AND STANDARDS.

6. THE COUNTY COMMISSIONER HAS REVIEWED THE PLANS AND FINDS THEM TO BE IN ACCORDANCE WITH THE COUNTY COMMISSIONER'S REGULATIONS AND STANDARDS.

7. THE DISTRICT ATTORNEY HAS REVIEWED THE PLANS AND FINDS THEM TO BE IN ACCORDANCE WITH THE DISTRICT ATTORNEY'S REGULATIONS AND STANDARDS.

8. THE COUNTY ATTORNEY HAS REVIEWED THE PLANS AND FINDS THEM TO BE IN ACCORDANCE WITH THE COUNTY ATTORNEY'S REGULATIONS AND STANDARDS.

**NOTE:** Check on plot size "X" unless otherwise shown.

1. To avoid conflict with the existing Northern Highway, the side area shown by this showing within each area shown shall hereafter be included only as shown.

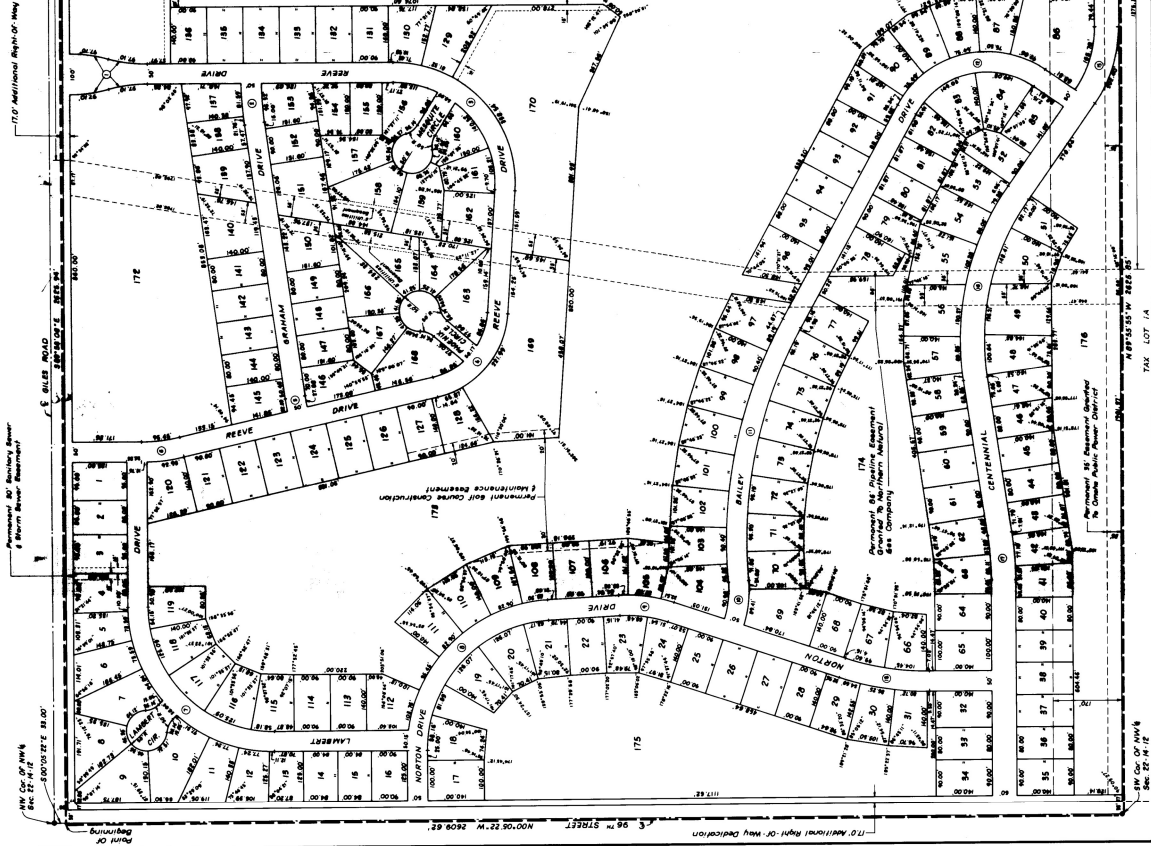
2. The area shown by this showing shall hereafter be included only as shown.

3. The area shown by this showing shall hereafter be included only as shown.

4. The area shown by this showing shall hereafter be included only as shown.

5. The area shown by this showing shall hereafter be included only as shown.

6. The area shown by this showing shall hereafter be included only as shown.



**PROJECT** [Handwritten: W] [Handwritten: 1855]

**DATE** [Handwritten: 8/20]

**DESIGNED BY** [Handwritten: J. G. ...]

**DRAWN BY** [Handwritten: ...]

**CHECKED BY** [Handwritten: ...]

**APPROVED BY** [Handwritten: ...]

**DATE** [Handwritten: 8/20]

**PROJECT NO.** 90078

**DATE** 8/20/12

**SCALE** AS SHOWN

**DATE** 8/20/12

**PROJECT NO.** 90078

**DATE** 8/20/12

**SCALE** AS SHOWN