

BOOK 665 PAGE 711
AFFIDAVIT OF CORRECTION
TURTLE CREEK
(LOTS 234-359)

MISC. 665/711

PLAT IN BACK OF BOOK

#6

ENTERED IN NUMERICAL INDEX AND RECORDED IN THE REGISTER OF DEEDS OFFICE IN DOUGLAS COUNTY, NEBRASKA

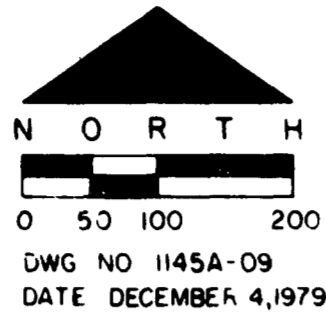
21 DAY OF January, 1982 AT 8:49 A.M. C. HAROLD OSTLER, REGISTER OF DEEDS

\$8.50

AFFIDAVIT TURTLE CREEK

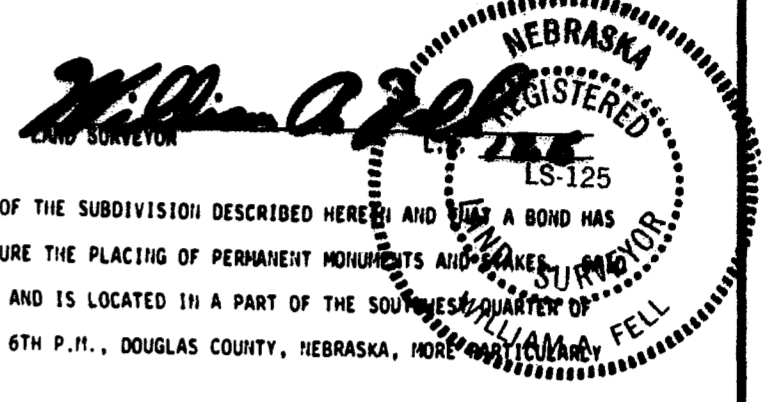
(LOTS 234-359)

A PART OF THE SOUTHWEST QUARTER OF SECTION 10, TOWNSHIP 14 NORTH, RANGE 12 EAST
OF THE 6TH P.M., DOUGLAS COUNTY, NEBRASKA



THIS IS TO CERTIFY THAT PART OF THE DIMENSIONS, BEARINGS AND ANGLES, IN LOTS 262-263, 276-285, 287, 292, 307-314, AND THE PLAT PERIMETER IN THE ORIGINAL PLATTING OF TURTLE CREEK, LOTS 234 THRU 359, WERE SHOWN IN ERROR AND TO FURTHER CERTIFY THAT THE BELOW PLAT CORRECTLY SHOWS ORIGINALLY INTENDED DIMENSIONS, BEARINGS, AND ANGLES.

DATE: 1-18-82

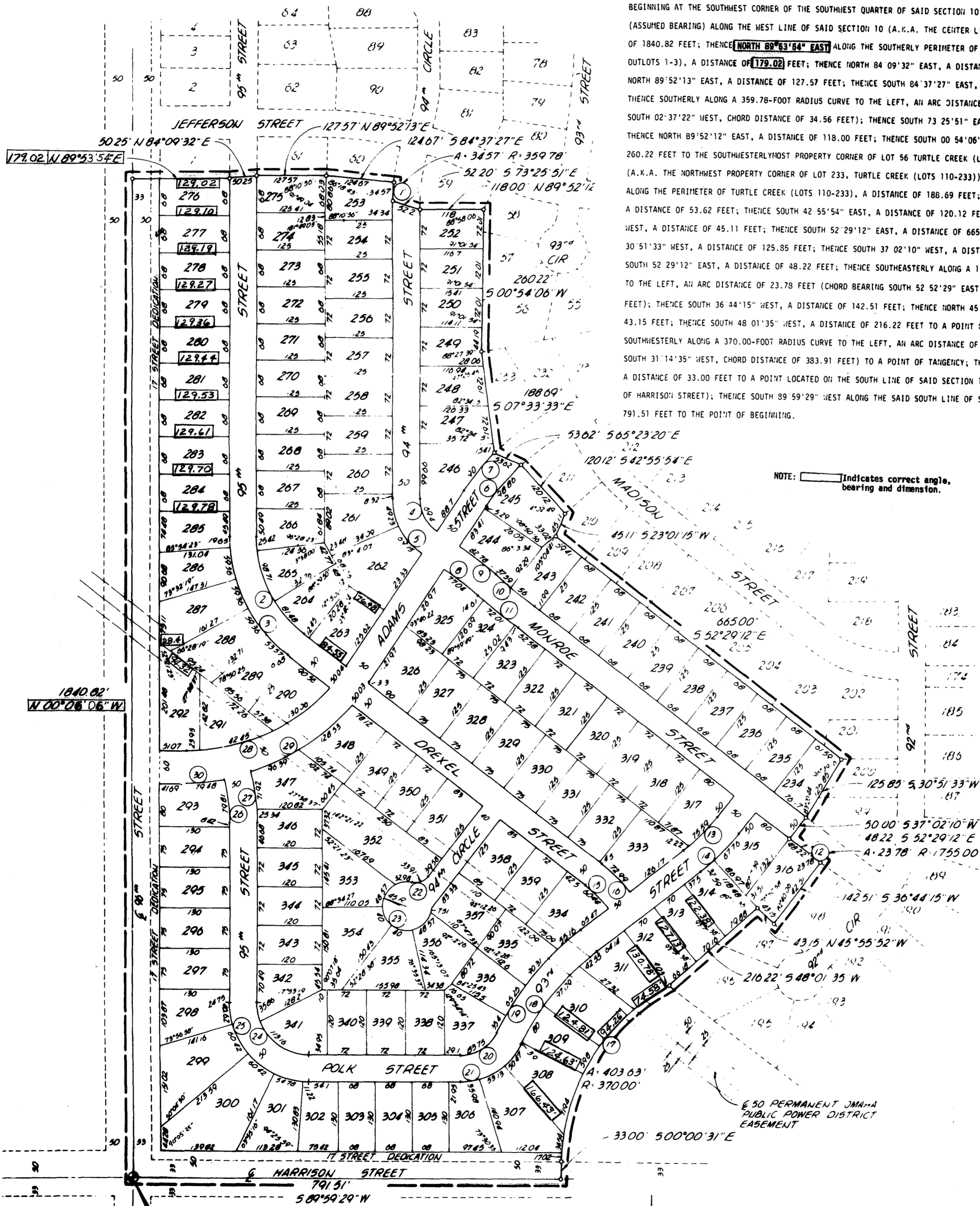


SURVEYOR'S CERTIFICATE:

I HEREBY CERTIFY THAT WE HAVE MADE A GROUND SURVEY OF THE SUBDIVISION DESCRIBED HEREIN AND THAT A BOND HAS BEEN FURNISHED TO THE CITY OF OMAHA IN ORDER TO INSURE THE PLACING OF PERMANENT MONUMENTS AND MARKERS. THE SUBDIVISION IS KNOWN AS TURTLE CREEK (LOTS 234-359) AND IS LOCATED IN A PART OF THE SOUTHWEST QUARTER OF SECTION 10, TOWNSHIP 14 NORTH, RANGE 12 EAST OF THE 6TH P.M., DOUGLAS COUNTY, NEBRASKA, MORE PARTICULARLY AS DESCRIBED AS FOLLOWS:

BEGINNING AT THE SOUTHWEST CORNER OF THE SOUTHWEST QUARTER OF SAID SECTION 10; THENCE NORTH 00°06'06" WEST (ASSUMED BEARING) ALONG THE WEST LINE OF SAID SECTION 10 (A.K.A. THE CENTER LINE OF 96TH STREET), A DISTANCE OF 1840.82 FEET; THENCE NORTH 89°53'54" EAST ALONG THE SOUTHERLY PERIMETER OF TURTLE CREEK (LOTS 1-109 AND OUTLOTS 1-3), A DISTANCE OF 179.02 FEET; THENCE NORTH 84°09'32" EAST, A DISTANCE OF 50.25 FEET; THENCE NORTH 89°52'13" EAST, A DISTANCE OF 127.57 FEET; THENCE SOUTH 84°37'27" EAST, A DISTANCE OF 124.67 FEET; THENCE SOUTHERLY ALONG A 359.78-FOOT RADIUS CURVE TO THE LEFT, AN ARC DISTANCE OF 34.57 FEET (CHORD BEARING SOUTH 02°37'22" WEST, CHORD DISTANCE OF 34.56 FEET); THENCE SOUTH 73°25'51" EAST, A DISTANCE OF 52.20 FEET; THENCE NORTH 89°52'12" EAST, A DISTANCE OF 118.00 FEET; THENCE SOUTH 00°54'06" WEST, A DISTANCE OF 260.22 FEET TO THE SOUTHWESTERLYMOST PROPERTY CORNER OF LOT 56 TURTLE CREEK (LOTS 1-109 AND OUTLOTS 1-3), (A.K.A. THE NORTHWEST PROPERTY CORNER OF LOT 233, TURTLE CREEK (LOTS 110-233)); THENCE SOUTH 07°33'33" EAST ALONG THE PERIMETER OF TURTLE CREEK (LOTS 110-233), A DISTANCE OF 188.69 FEET; THENCE SOUTH 65°23'20" EAST, A DISTANCE OF 53.62 FEET; THENCE SOUTH 42°55'54" EAST, A DISTANCE OF 120.12 FEET; THENCE SOUTH 23°01'15" WEST, A DISTANCE OF 45.11 FEET; THENCE SOUTH 52°29'12" EAST, A DISTANCE OF 665.00 FEET; THENCE SOUTH 30°51'33" WEST, A DISTANCE OF 125.85 FEET; THENCE SOUTH 37°02'10" WEST, A DISTANCE OF 50.00 FEET; THENCE SOUTH 52°29'12" EAST, A DISTANCE OF 48.22 FEET; THENCE SOUTHEASTERLY ALONG A 1,755.00-FOOT RADIUS CURVE TO THE LEFT, AN ARC DISTANCE OF 23.78 FEET (CHORD BEARING SOUTH 52°52'29" EAST, CHORD DISTANCE OF 23.78 FEET); THENCE SOUTH 36°44'15" WEST, A DISTANCE OF 142.51 FEET; THENCE NORTH 45°55'52" WEST, A DISTANCE OF 43.15 FEET; THENCE SOUTH 48°01'35" WEST, A DISTANCE OF 216.22 FEET TO A POINT OF CURVATURE; THENCE SOUTHWESTERLY ALONG A 370.00-FOOT RADIUS CURVE TO THE LEFT, AN ARC DISTANCE OF 403.63 FEET (CHORD BEARING SOUTH 31°14'35" WEST, CHORD DISTANCE OF 383.91 FEET) TO A POINT OF TANGENCY; THENCE SOUTH 00°00'31" EAST, A DISTANCE OF 33.00 FEET TO A POINT LOCATED ON THE SOUTH LINE OF SAID SECTION 10 (A.K.A. THE CENTER LINE OF HARRISON STREET); THENCE SOUTH 89°59'29" WEST ALONG THE SAID SOUTH LINE OF SECTION 10, A DISTANCE OF 791.51 FEET TO THE POINT OF BEGINNING.

NOTE: Indicates correct angle, bearing and dimension.



6 Misc

RECEIVED
1982 JAN 21 AM 8:19
CLARENCE G. SUTHER
REGISTERED DEEDS
DOUGLAS COUNTY, NEBR.

Book 665
Page 711
of Min

Fee 8.50
Index
Copied

87-440

87-433



THE SCHEMMER ASSOCIATES INC.
ARCHITECTS · ENGINEERS · PLANNERS
OMAHA · SEATTLE · QUAD CITIES · ORLANDO

BOOK 665