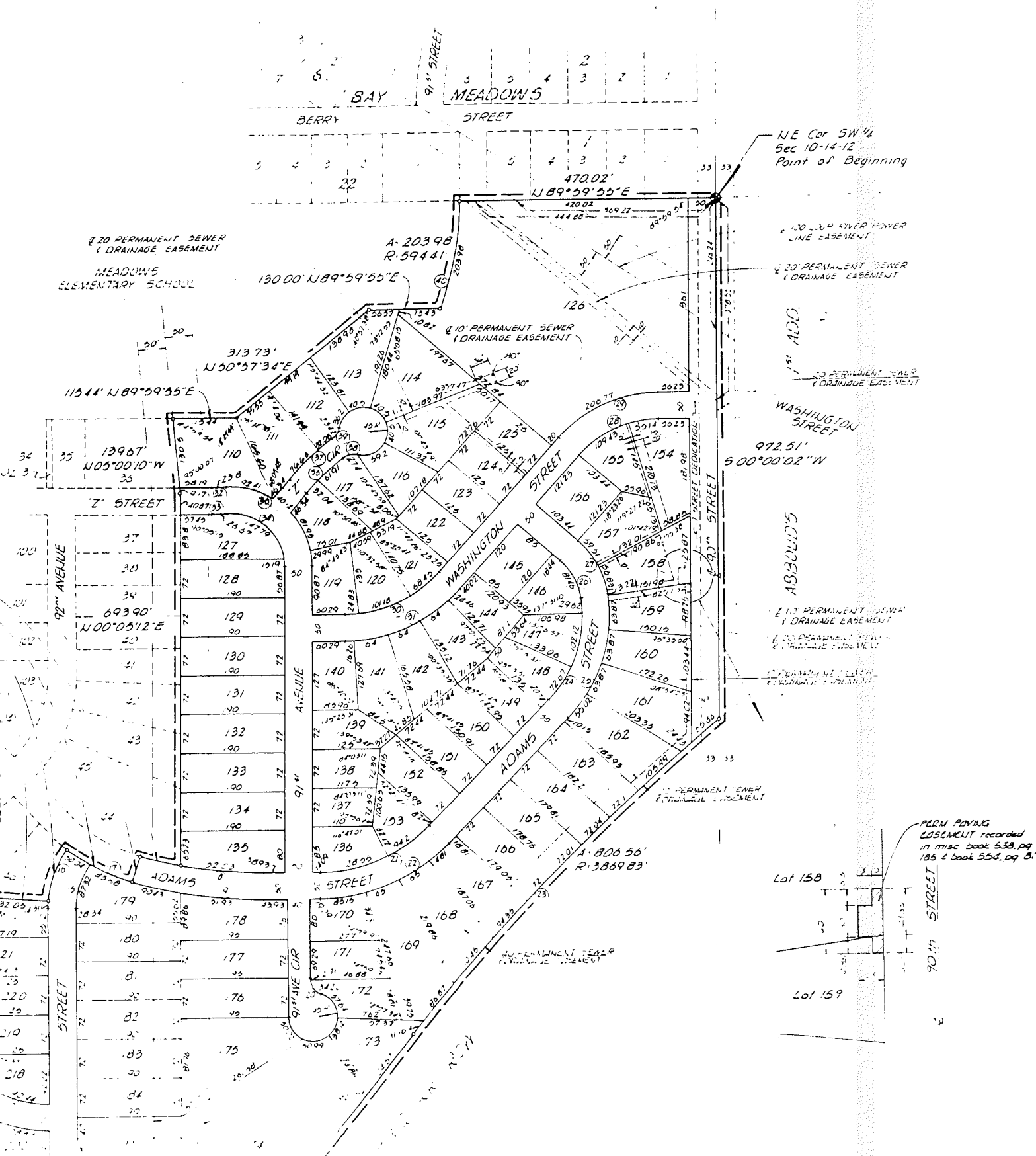


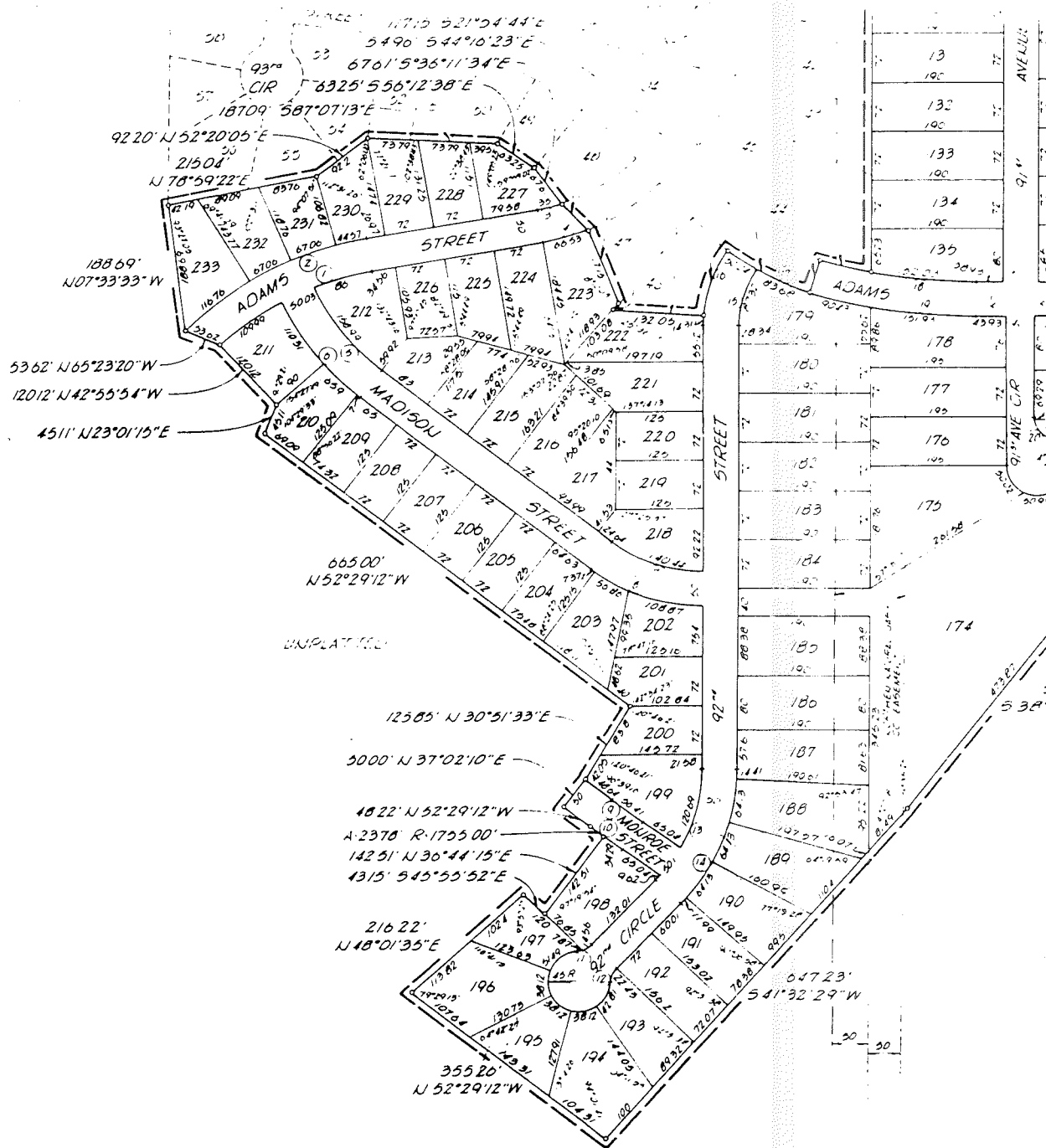
# TURTLE CREEK

## (LOTS 110-233)

A PART OF THE SOUTHWEST QUARTER OF SECTION 10, TOWNSHIP 14 NORTH, RANGE, 12 EAST OF THE 6TH P.M.,  
JUDGAS COUNTY, NEBRASKA

BOOK 1624 PAGE 485





CLERK'S CERTIFICATE

I HEREBY CERTIFY THAT I FIND NO REGULAR OR SPECIAL TAXES DUE OR DELINQUENT AGAINST THE PROPERTY DESCRIBED IN THE SURVEYOR'S CERTIFICATE AND EMBRACED WITHIN THIS PLAT AS SHOWN BY THE RECORDS OF THIS OFFICE.

DATE: 25 Jan 1979

*Ann J. Hume*  
 COUNTY TREASURER

APPROVAL OF OMAHA CITY COUNCIL

THIS PLAT OF TURTLE CREEK, LOTS 110 THRU 233, WAS APPROVED BY THE CITY COUNCIL ON April 19 79.  
 ACTING  
*[Signature]*  
 CITY CLERK

APPROVAL OF CITY ENGINEER OF OMAHA

I HEREBY APPROVE THIS PLAT OF TURTLE CREEK (LOTS 110 THRU 233 INCLUSIVE) AS TO THE DESIGN STANDARDS IN THIS 29 DAY OF JANUARY A.D. 19 79.

*Jeffrey M. Brass*  
 CITY ENGINEER

APPROVAL OF OMAHA PLANNING BOARD

THIS PLAT OF TURTLE CREEK, LOTS 110 THRU 233, WAS APPROVED BY THE PLANNING BOARD ON FEBRUARY 19 79.

I HEREBY CERTIFY THAT ADEQUATE PROVISIONS HAVE BEEN MADE FOR COMPLIANCE WITH TITLE 56 OF THE OMAHA MUNICIPAL CODE.

DATE: MAY 17 1979

*Jeffrey M. Brass*  
 CITY ENGINEER

*[Signature]*  
 CHAIRMAN, OMAHA CITY PLANNING BOARD