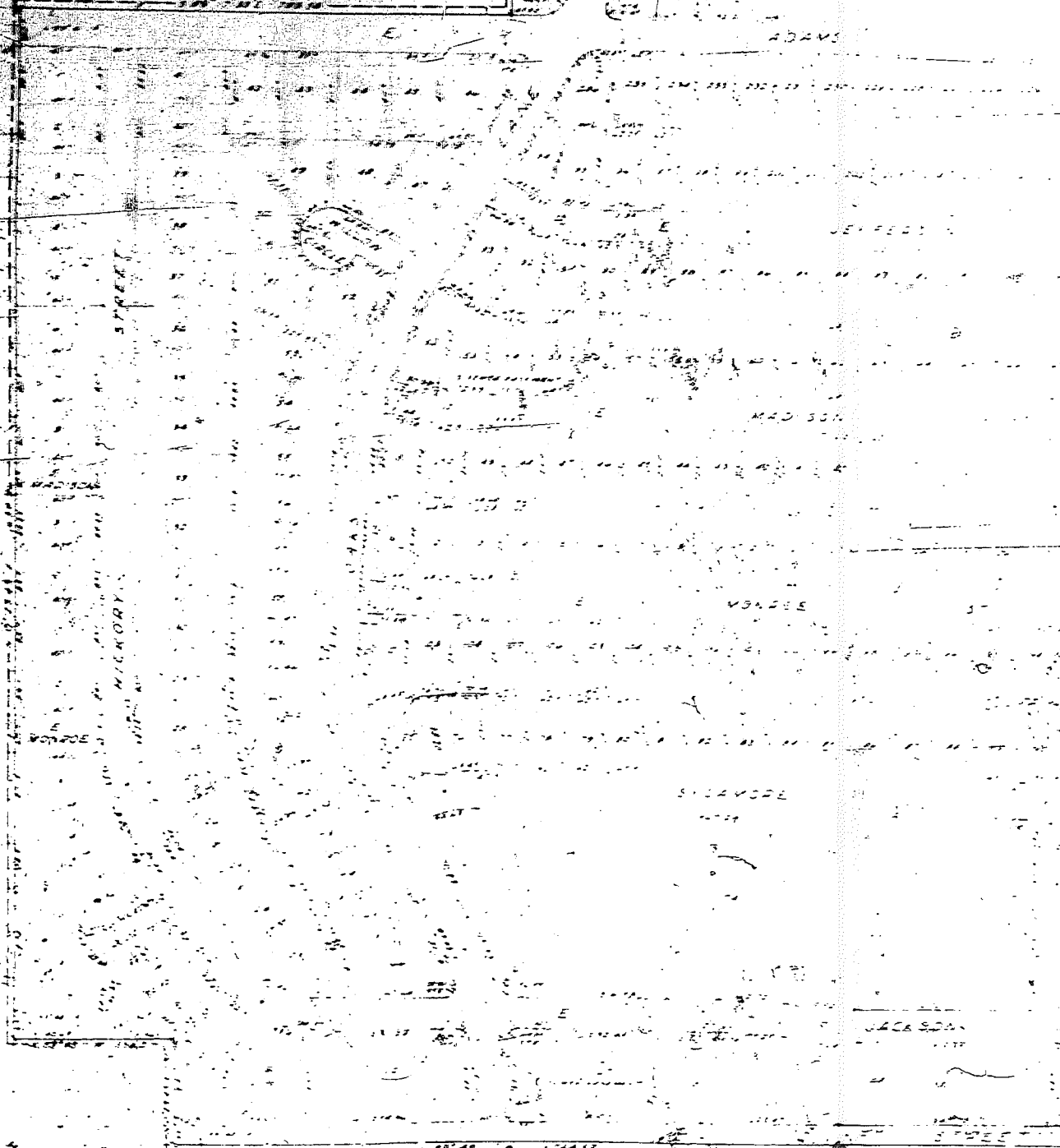
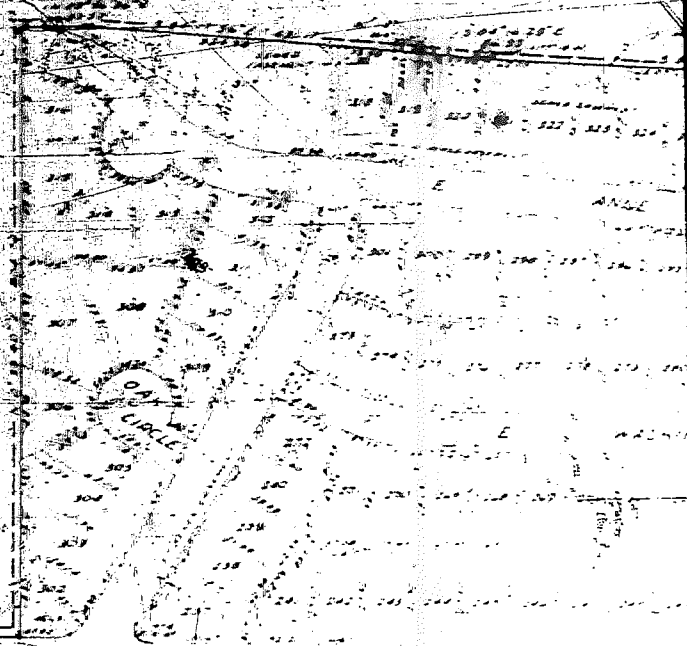


THE

SECTION 6, TOWNSHIP 10 N, RANGE 10 E, 6th P.M.S.

LOTS 1 & 2

CURVE DATA



WILKINSON

NICKORY

MADSON

WALDE

SILAVOPE

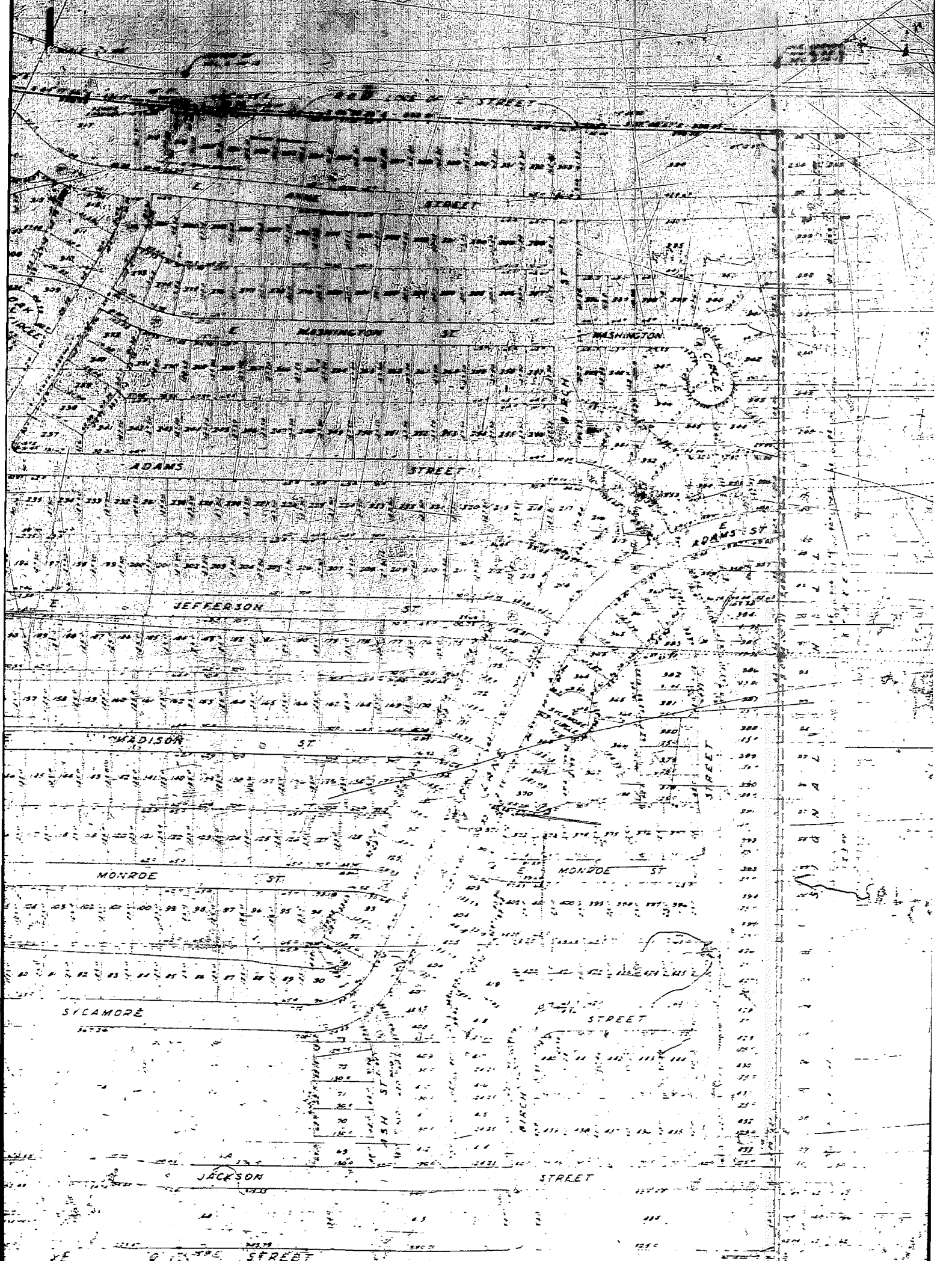
JACKSON

STOPE

THE OAKS

COMMENCED AT THE SOUTHWEST CORNER OF
SECTION 16, TOWNSHIP 36 NORTH, RANGE 12 EAST
OF THE 6TH PRINCIPAL MERIDIAN, MISSOURI

(LOTS 1 THRU 142 INCL.)



UNPLEATED

POINT OF BEGINNING
SEE CORNER
24 1/2' 18 1/2'

SURVEYOR'S CERTIFICATE

I HEREBY CERTIFY THAT I HAVE ACCURATELY SURVEYED AND STAKED WITH IRON PINS, ALL CORNERS OF ALL LOTS, AVENUES, STREETS, ANGLE POINTS AND ENDS OF ALL CURVES IN THE TRACT, SAID TRACT IS LOCATED IN THE SOUTH HALF OF SECTION 6, TOWNSHIP 14 NORTH, RANGE 22 EAST OF THE 6TH P.M., DOUGLAS COUNTY, NEBRASKA, MORE PARTICULARLY DESCRIBED AS FOLLOWS:

BEGINNING AT THE SOUTHEAST CORNER OF THE SOUTHWEST QUARTER OF THE SOUTH-EAST QUARTER OF SECTION 6, THENCE SOUTH 89° 49' 59" WEST (ASSUMED BEARING) ALONG THE CENTERLINE OF 12" STREET AND THE SOUTH LINE OF THE SOUTHWEST QUARTER OF SECTION 6 A DISTANCE OF 1,318.73 FEET TO THE SOUTH QUARTER CORNER OF SECTION 6, THENCE NORTH 89° 49' 59" WEST ALONG THE CENTERLINE OF 12" STREET AND THE SOUTH LINE OF THE SOUTHWEST QUARTER OF SECTION 6 A DISTANCE OF 1,064.53 FEET TO A POINT ON THE SOUTH LINE OF THE SOUTHWEST QUARTER OF SECTION 6, THENCE NORTH 0° 23' 45" EAST ALONG A LINE 256.2 FEET EAST OF AND PARALLEL TO THE WEST LINE OF THE EAST HALF OF THE SOUTHWEST QUARTER OF SECTION 6 A DISTANCE OF 179 FEET, THENCE NORTH 89° 48' 11" WEST ALONG A LINE 170.8 FEET NORTH OF AND PARALLEL TO THE SOUTH LINE OF THE SOUTHWEST QUARTER OF SECTION 6, A DISTANCE OF 256.2 FEET TO A POINT ON THE WEST LINE OF THE EAST HALF OF THE SOUTHWEST QUARTER, THENCE NORTH 0° 23' 45" EAST ALONG THE WEST LINE OF THE EAST HALF OF THE SOUTHWEST QUARTER OF SECTION 6 A DISTANCE OF 1,639.76 FEET TO A POINT ON THE SOUTH LINE OF THE MILLARD SCHOOL PROPERTY, THENCE SOUTH 0° 27' 13" EAST ALONG THE SOUTH LINE OF THE MILLARD SCHOOL PROPERTY, A DISTANCE OF 704.50 FEET TO THE SOUTHEAST CORNER OF THE MILLARD SCHOOL PROPERTY, THENCE NORTH 0° 33' 40" EAST ALONG THE EAST LINE OF THE MILLARD SCHOOL PROPERTY A DISTANCE OF 804.74 FEET TO A POINT ON THE SOUTH RIGHT-OF-WAY LINE OF 12" STREET, THENCE NORTH 89° 56' 26" EAST ALONG THE SOUTH RIGHT-OF-WAY LINE OF 12" STREET A DISTANCE OF 814.57 FEET, THENCE SOUTH 84° 17' 56" EAST ALONG THE SOUTH RIGHT-OF-WAY LINE OF 12" STREET A DISTANCE OF 454.17 FEET TO A POINT 76.40 FEET SOUTHERLY OF THE CENTER OF SECTION 6, THENCE SOUTH 84° 15' 10" EAST ALONG THE SOUTH RIGHT-OF-WAY LINE OF 12" STREET A DISTANCE OF 86.39 FEET, THENCE SOUTH 0° 58' 29" EAST ALONG THE SOUTH RIGHT-OF-WAY LINE OF 12" STREET A DISTANCE OF 832.91 FEET, THENCE SOUTH 89° 00' 51" EAST ALONG THE SOUTH RIGHT-OF-WAY LINE OF 12" STREET A DISTANCE OF 108.45 FEET TO A POINT ON THE EAST LINE OF THE NORTHWEST QUARTER OF THE SOUTHWEST QUARTER OF SECTION 6, 150 FEET SOUTHERLY OF THE NORTHEAST CORNER OF THE NORTHWEST QUARTER OF THE SOUTHWEST QUARTER OF SECTION 6, THENCE SOUTH 0° 04' 00" WEST ALONG THE EAST LINE OF THE WEST HALF OF THE SOUTHWEST QUARTER OF SECTION 6 A DISTANCE OF 170.00 FEET TO THE POINT OF BEGINNING, CONTAINING 162.50 ACRES MORE OR LESS.

DATED 6-6-1962

William J. Hill
SURVEYOR

ALL THE RIGHTS AND INTERESTS IN THE TRACT, INCLUDING THE RIGHT OF WAY OF THE STREETS AND AVENUES, ARE HEREBY CONFIRMED AND ESTABLISHED TO THE TRUSTEES OF THE TRUST OF THE TRACT, TO-WIT: JOHN J. HILL AND EMIL P. HOFFMANN, TRUSTEES, OF THE TRACT, IN ACCORDANCE WITH THE TERMS OF THE TRUST AGREEMENT, AND THE TRUSTEES HEREBY AGREE TO HOLD THE TRACT AND THE STREETS AND AVENUES THEREON IN TRUST FOR THE TRACT, AND TO DEFEND THE TRACT AND THE STREETS AND AVENUES THEREON AGAINST ALL CLAIMS AND DEMANDS OF WHOMSOEVER THEY MAY COME.

IN WITNESS WHEREOF, THE TRUSTEES OF THE TRACT, JOHN J. HILL AND EMIL P. HOFFMANN, HAVE HEREUNTO SIGNED THEIR NAMES AND AFFIXED THEIR OFFICIAL SIGNS, AT OMAHA, NEBRASKA, THIS 6TH DAY OF JUNE, 1962.

WITNESSED AND SUBSCRIBED IN MY OFFICE AND IN THE PRESENCE OF TWO CREDITABLE WITNESSES, JOHN J. HILL AND EMIL P. HOFFMANN, TRUSTEES OF THE TRACT, ON THIS 6TH DAY OF JUNE, 1962.

SEAL

ACKNOWLEDGEMENT OF NOTARY

STATE OF NEBRASKA

COUNTY OF DOUGLAS

ON THIS 6 DAY OF FEBRUARY A.D. 1962, BEFORE ME A NOTARY PUBLIC, DULY COMMISSIONED AND QUALIFIED IN AND FOR SAID COUNTY, PERSONALLY CAME EMIL F. BARTELS, TRUSTEE, MORTGAGEE WHO IS PERSONALLY KNOWN TO ME TO BE THE IDENTICAL PERSON WHOSE NAME IS AFFIXED TO THE DEDICATION OF THIS PLAT AND HE ACKNOWLEDGED THE EXECUTION THEREOF TO BE HIS VOLUNTARY ACT AND DEED; AND FURTHER CAME HAROLD E. GROVE, PRESIDENT OF OAKS, INC., WHO IS PERSONALLY KNOWN TO BE THE IDENTICAL PERSON WHOSE NAME IS AFFIXED TO THE DEDICATION OF THIS PLAT AND HE ACKNOWLEDGED HIS EXECUTION THEREOF TO BE HIS VOLUNTARY ACT AND DEED AS SUCH OFFICER AND THE VOLUNTARY ACT AND DEED OF SAID CORPORATION AND THE SEAL OF SAID CORPORATION WAS THERETO AFFIXED BY ITS AUTHORITY.

WITNESS MY HAND AND NOTARIAL SEAL AT OMAHA, NEBRASKA, IN SAID COUNTY THE DATE LAST AFORESAID.

[Signature]
NOTARY PUBLIC

MY COMMISSION EXPIRES ON THE 21 DAY OF MAY 1966

COUNTY TREASURER'S CERTIFICATE

I HEREBY CERTIFY THAT THE RECORDS OF MY OFFICE SHOW NO TAXES DUE OR DELINQUENT UPON THE PROPERTY DESCRIBED IN THE CERTIFICATE OF SURVEY AS OF THIS 6th DAY OF Feb., 1962.

[Signature]
DOUGLAS COUNTY TREASURER

APPROVAL OF PLANNING COMMISSION

THIS PLAT OF THE OAKS, THE LOTS NUMBERED AS SHOWN WAS APPROVED BY THE PLANNING COMMISSION OF THE VILLAGE OF HILLARD, NEBRASKA, ON THIS 7th DAY OF February A.D., 1962.

[Signature]
CHAIRMAN OF PLANNING COMMISSION

APPROVAL OF THE BOARD OF TRUSTEES

THIS PLAT OF THE OAKS, THE LOTS NUMBERED AS SHOWN WAS APPROVED BY THE BOARD OF TRUSTEES OF THE VILLAGE OF HILLARD, NEBRASKA, ON THIS 7th DAY OF February A.D., 1962.

[Signature]
CHAIRMAN OF THE BOARD OF TRUSTEES

1 February 22 4:13 P. 122.35

THE

SUBDIVISION LOC
SECTION 6 TOWNSHIP
OF THE 6TH R.M. D.
LOTS 1 X

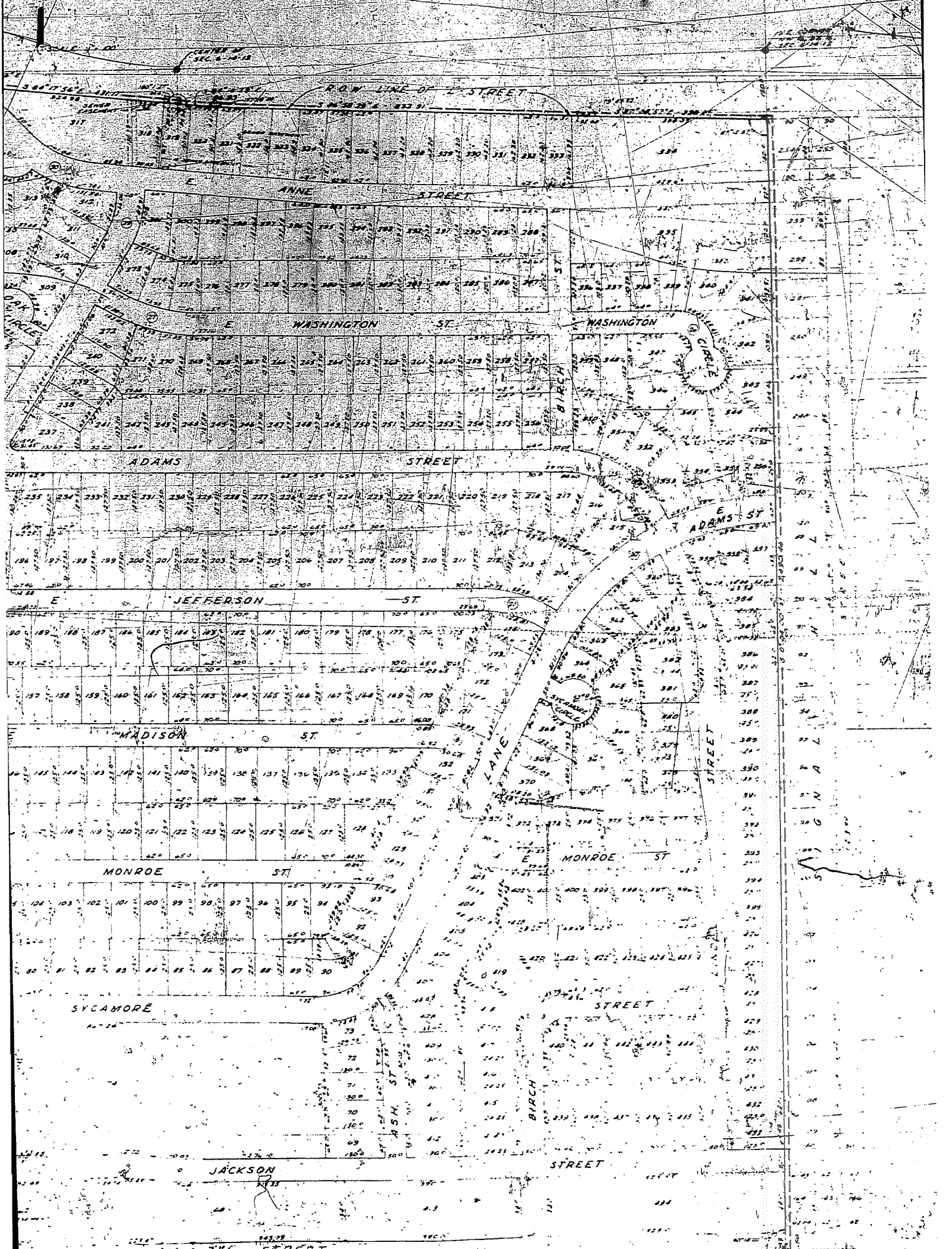
CURVE DATA

Station	Chord	Angle	Station	Chord	Angle
1+00	120.155	111.438	1+00	120.155	111.438
1+10	119.845	111.438	1+10	119.845	111.438
1+20	119.535	111.438	1+20	119.535	111.438
1+30	119.225	111.438	1+30	119.225	111.438
1+40	118.915	111.438	1+40	118.915	111.438
1+50	118.605	111.438	1+50	118.605	111.438
1+60	118.295	111.438	1+60	118.295	111.438
1+70	117.985	111.438	1+70	117.985	111.438
1+80	117.675	111.438	1+80	117.675	111.438
1+90	117.365	111.438	1+90	117.365	111.438
2+00	117.055	111.438	2+00	117.055	111.438
2+10	116.745	111.438	2+10	116.745	111.438
2+20	116.435	111.438	2+20	116.435	111.438
2+30	116.125	111.438	2+30	116.125	111.438
2+40	115.815	111.438	2+40	115.815	111.438
2+50	115.505	111.438	2+50	115.505	111.438
2+60	115.195	111.438	2+60	115.195	111.438
2+70	114.885	111.438	2+70	114.885	111.438
2+80	114.575	111.438	2+80	114.575	111.438
2+90	114.265	111.438	2+90	114.265	111.438
3+00	113.955	111.438	3+00	113.955	111.438
3+10	113.645	111.438	3+10	113.645	111.438
3+20	113.335	111.438	3+20	113.335	111.438
3+30	113.025	111.438	3+30	113.025	111.438
3+40	112.715	111.438	3+40	112.715	111.438
3+50	112.405	111.438	3+50	112.405	111.438
3+60	112.095	111.438	3+60	112.095	111.438
3+70	111.785	111.438	3+70	111.785	111.438
3+80	111.475	111.438	3+80	111.475	111.438
3+90	111.165	111.438	3+90	111.165	111.438
4+00	110.855	111.438	4+00	110.855	111.438
4+10	110.545	111.438	4+10	110.545	111.438
4+20	110.235	111.438	4+20	110.235	111.438
4+30	109.925	111.438	4+30	109.925	111.438
4+40	109.615	111.438	4+40	109.615	111.438
4+50	109.305	111.438	4+50	109.305	111.438
4+60	108.995	111.438	4+60	108.995	111.438
4+70	108.685	111.438	4+70	108.685	111.438
4+80	108.375	111.438	4+80	108.375	111.438
4+90	108.065	111.438	4+90	108.065	111.438
5+00	107.755	111.438	5+00	107.755	111.438
5+10	107.445	111.438	5+10	107.445	111.438
5+20	107.135	111.438	5+20	107.135	111.438
5+30	106.825	111.438	5+30	106.825	111.438
5+40	106.515	111.438	5+40	106.515	111.438
5+50	106.205	111.438	5+50	106.205	111.438
5+60	105.895	111.438	5+60	105.895	111.438
5+70	105.585	111.438	5+70	105.585	111.438
5+80	105.275	111.438	5+80	105.275	111.438
5+90	104.965	111.438	5+90	104.965	111.438
6+00	104.655	111.438	6+00	104.655	111.438
6+10	104.345	111.438	6+10	104.345	111.438
6+20	104.035	111.438	6+20	104.035	111.438
6+30	103.725	111.438	6+30	103.725	111.438
6+40	103.415	111.438	6+40	103.415	111.438
6+50	103.105	111.438	6+50	103.105	111.438
6+60	102.795	111.438	6+60	102.795	111.438
6+70	102.485	111.438	6+70	102.485	111.438
6+80	102.175	111.438	6+80	102.175	111.438
6+90	101.865	111.438	6+90	101.865	111.438
7+00	101.555	111.438	7+00	101.555	111.438
7+10	101.245	111.438	7+10	101.245	111.438
7+20	100.935	111.438	7+20	100.935	111.438
7+30	100.625	111.438	7+30	100.625	111.438
7+40	100.315	111.438	7+40	100.315	111.438
7+50	100.005	111.438	7+50	100.005	111.438
7+60	99.695	111.438	7+60	99.695	111.438
7+70	99.385	111.438	7+70	99.385	111.438
7+80	99.075	111.438	7+80	99.075	111.438
7+90	98.765	111.438	7+90	98.765	111.438
8+00	98.455	111.438	8+00	98.455	111.438
8+10	98.145	111.438	8+10	98.145	111.438
8+20	97.835	111.438	8+20	97.835	111.438
8+30	97.525	111.438	8+30	97.525	111.438
8+40	97.215	111.438	8+40	97.215	111.438
8+50	96.905	111.438	8+50	96.905	111.438
8+60	96.595	111.438	8+60	96.595	111.438
8+70	96.285	111.438	8+70	96.285	111.438
8+80	95.975	111.438	8+80	95.975	111.438
8+90	95.665	111.438	8+90	95.665	111.438
9+00	95.355	111.438	9+00	95.355	111.438
9+10	95.045	111.438	9+10	95.045	111.438
9+20	94.735	111.438	9+20	94.735	111.438
9+30	94.425	111.438	9+30	94.425	111.438
9+40	94.115	111.438	9+40	94.115	111.438
9+50	93.805	111.438	9+50	93.805	111.438
9+60	93.495	111.438	9+60	93.495	111.438
9+70	93.185	111.438	9+70	93.185	111.438
9+80	92.875	111.438	9+80	92.875	111.438
9+90	92.565	111.438	9+90	92.565	111.438
10+00	92.255	111.438	10+00	92.255	111.438
10+10	91.945	111.438	10+10	91.945	111.438
10+20	91.635	111.438	10+20	91.635	111.438
10+30	91.325	111.438	10+30	91.325	111.438
10+40	91.015	111.438	10+40	91.015	111.438
10+50	90.705	111.438	10+50	90.705	111.438
10+60	90.395	111.438	10+60	90.395	111.438
10+70	90.085	111.438	10+70	90.085	111.438
10+80	89.775	111.438	10+80	89.775	111.438
10+90	89.465	111.438	10+90	89.465	111.438
11+00	89.155	111.438	11+00	89.155	111.438
11+10	88.845	111.438	11+10	88.845	111.438
11+20	88.535	111.438	11+20	88.535	111.438
11+30	88.225	111.438	11+30	88.225	111.438
11+40	87.915	111.438	11+40	87.915	111.438
11+50	87.605	111.438	11+50	87.605	111.438
11+60	87.295	111.438	11+60	87.295	111.438
11+70	86.985	111.438	11+70	86.985	111.438
11+80	86.675	111.438	11+80	86.675	111.438
11+90	86.365	111.438	11+90	86.365	111.438
12+00	86.055	111.438	12+00	86.055	111.438
12+10	85.745	111.438	12+10	85.745	111.438
12+20	85.435	111.438	12+20	85.435	111.438
12+30	85.125	111.438	12+30	85.125	111.438
12+40	84.815	111.438	12+40	84.815	111.438
12+50	84.505	111.438	12+50	84.505	111.438
12+60	84.195	111.438	12+60	84.195	111.438
12+70	83.885	111.438	12+70	83.885	111.438
12+80	83.575	111.438	12+80	83.575	111.438
12+90	83.265	111.438	12+90	83.265	111.438
13+00	82.955	111.438	13+00	82.955	111.438
13+10	82.645	111.438	13+10	82.645	111.438
13+20	82.335	111.438	13+20	82.335	111.438
13+30	82.025	111.438	13+30	82.025	111.438
13+40	81.715	111.438	13+40	81.715	111.438
13+50	81.405	111.438	13+50	81.405	111.438
13+60	81.095	111.438	13+60	81.095	111.438
13+70	80.785	111.438	13+70	80.785	111.438
13+80	80.475	111.438	13+80	80.475	111.438
13+90	80.165	111.438	13+90	80.165	111.438
14+00	79.855	111.438	14+00	79.855	111.438
14+10	79.545	111.438	14+10	79.545	111.438
14+20	79.235	111.438	14+20	79.235	111.438
14+30	78.925	111.438	14+30	78.925	111.438
14+40	78.615	111.438	14+40	78.615	111.438
14+50	78.305	111.438	14+50	78.305	111.438
14+60	77.995	111.438	14+60	77.995	111.438
14+70	77.685	111.438	14+70	77.685	111.438
14+80	77.375	111.438	14+80	77.375	111.438
14+90	77.065	111.438	14+90	77.065	111.438
15+00	76.755	111.438	15+00	76.755	111.438
15+10	76.445	111.438	15+10	76.445	111.438
15+20	76.135	111.438	15+20	76.135	111.438
15+30	75.825	111.438	15+30	75.825	111.438
15+40	75.515	111.438	15+40	75.515	111.438
15+50	75.205	111.438	15+50	75.205	111.438
15+60	74.895	111.438	15+60	74.895	111.438
15+70	74.585	111.438	15+70	74.585	111.438
15+80	74.275	111.438	15+80	74.275	111.438
15+90	73.965	111.438	15+90	73.965	111.438
16+00	73.655	111.438	16+00	73.655	111.438
16+10	73.345	111.438	16+10	73.345	111.438
16+20	73.035	111.438	16+20	73.035	111.438
16+30	72.725	111.438	16+30	72.725	111.438
16+40	72.415	111.438	16+40	72.415	111.438
16+50	72.105	111.438	16+50	72.105	111.438
16+60	71.795	111.438	16+60	71.795	111.438
16+70	71.485	111.438	16+70	71.485	111.438
16+80	71.175	111.438	16+80	71.175	111.438
16+90	70.865	111.438	16+90	70.865	111.438
17+00	70.555	111.438	17+00	70.555	111.438
17+10	70.245	111.438	17+10	70.245	111.438
17+20	69.935	111.438	17+20	69.935	111.438
17+30	69.625	111.438	17+30	69.625	111.438
17+40	69.315	111.438	17+40	69.315	111.438
17+50	69.005	111.438	17+50	69.005	111.438
17+60	68.695	111.438	17+60	68.695	111.438
17+70	68.385	111.438	17+70	68.385	111.438
17+80	68.075	111.438	17+80	68.075	111.438
17+90	67.765	111.438	17+90	67.765	111.438
18+00	67.455	111.438	18+00	67.455	111.438
18+10	67.145	111.438	18+1		

THE OAKS

A SUBDIVISION LOCATED IN THE SOUTH HALF OF SECTION 6, TOWNSHIP 14 NORTH, RANGE 12 EAST OF THE 6TH RM. DOUGLASS COUNTY, NEBRASKA

(LOTS 1 THRU 444 INCL.)



UNPLATTD

POINT OF BEGINNING
5/20/12

SURVEYOR'S CERTIFICATE:

I HEREBY CERTIFY THAT I HAVE ACCURATELY SURVEYED AND STAKED WITH IRON PINS ALL CORNERS OF ALL LOTS, AVENUES, STREETS, ANGLE POINTS AND ENDS OF ALL CURVES IN THE OAKS, SAID ADDITION IS LOCATED IN THE SOUTH HALF OF SECTION 6, TOWNSHIP 14 NORTH, RANGE 12 EAST OF THE 6TH P.M., DOUGLAS COUNTY, NEBRASKA, MORE PARTICULARLY DESCRIBED AS FOLLOWS:

BEGINNING AT THE SOUTHEAST CORNER OF THE SOUTHWEST QUARTER OF THE SOUTHEAST QUARTER OF SECTION 6, THENCE SOUTH 89° 49' 59" WEST (ASSUMED BEARING) ALONG THE CENTERLINE OF "O" STREET TO THE SOUTH LINE OF THE SOUTHEAST QUARTER OF SECTION 6 A DISTANCE OF 1,318.79 FEET TO THE SOUTH QUARTER CORNER OF SECTION 6, THENCE NORTH 89° 48' 11" WEST ALONG THE CENTERLINE OF "O" STREET AND THE SOUTH LINE OF THE SOUTHWEST QUARTER OF SECTION 6 A DISTANCE OF 1,064.53 FEET TO A POINT ON THE SOUTH LINE OF THE SOUTHWEST QUARTER OF SECTION 6, THENCE NORTH 0° 23' 55" EAST ALONG A LINE 256.2 FEET EAST OF AND PARALLEL TO THE WEST LINE OF THE EAST HALF OF THE SOUTHWEST QUARTER OF SECTION 6 A DISTANCE OF 179 FEET, THENCE NORTH 89° 48' 11" WEST ALONG A LINE 170.0 FEET NORTH OF AND PARALLEL TO THE SOUTH LINE OF THE SOUTHWEST QUARTER OF SECTION 6, A DISTANCE OF 256.2 FEET TO A POINT ON THE WEST LINE OF THE EAST HALF OF THE SOUTHWEST QUARTER, THENCE NORTH 0° 23' 45" EAST ALONG THE WEST LINE OF THE EAST HALF OF THE SOUTHWEST QUARTER OF SECTION 6 A DISTANCE OF 1,639.96 FEET TO A POINT ON THE SOUTH LINE OF THE MILLARD SCHOOL PROPERTY, THENCE SOUTH 89° 17' 33" EAST ALONG THE SOUTH LINE OF THE MILLARD SCHOOL PROPERTY A DISTANCE OF 789.58 FEET TO THE SOUTHEAST CORNER OF THE MILLARD SCHOOL PROPERTY, THENCE NORTH 0° 33' 40" EAST ALONG THE EAST LINE OF THE MILLARD SCHOOL PROPERTY A DISTANCE OF 804.74 FEET TO A POINT ON THE SOUTH RIGHT-OF-WAY LINE OF "L" STREET, THENCE NORTH 89° 56' 26" EAST ALONG THE SOUTH RIGHT-OF-WAY LINE OF "L" STREET A DISTANCE OF 87.57 FEET, THENCE SOUTH 89° 17' 33" WEST ALONG THE SOUTH RIGHT-OF-WAY LINE OF "L" STREET A DISTANCE OF 431.17 FEET TO A POINT 75.40 FEET SOUTHERLY OF THE CENTER OF SECTION 6, THENCE SOUTH 84° 16' 29" EAST ALONG THE SOUTH RIGHT-OF-WAY LINE OF "L" STREET A DISTANCE OF 86.99 FEET, THENCE SOUTH 86° 58' 29" EAST ALONG THE SOUTH RIGHT-OF-WAY LINE OF "L" STREET A DISTANCE OF 832.91 FEET, THENCE SOUTH 87° 02' 17" EAST ALONG THE SOUTH RIGHT-OF-WAY LINE OF "L" STREET A DISTANCE OF 398.05 FEET TO A POINT ON THE EAST LINE OF THE NORTHWEST QUARTER OF THE SOUTHEAST QUARTER OF SECTION 6, 150 FEET SOUTHERLY OF THE NORTHEAST CORNER OF THE NORTHWEST QUARTER OF THE SOUTHEAST QUARTER OF SECTION 6, THENCE SOUTH 89° 49' 59" WEST ALONG THE EAST LINE OF THE WEST HALF OF THE SOUTHWEST QUARTER OF SECTION 6 A DISTANCE OF 1,064.53 FEET TO THE BEGINNING, CONTAINING 534 ACRES MORE OR LESS.

DATE: Oct 10 1962

William J. Hill

ACKNOWLEDGEMENT OF NOTARY:

STATE OF NEBRASKA)

ss.

COUNTY OF DOUGLAS)

ON THIS 0 DAY OF FEBRUARY, A.D., 1962, BEFORE ME A NOTARY PUBLIC, DULY COMMISSIONED AND QUALIFIED IN AND FOR SAID COUNTY, PERSONALLY CAME EMIL F. BARTELS, TRUSTEE, MORTGAGEE WHO IS PERSONALLY KNOWN TO ME TO BE THE IDENTICAL PERSON WHOSE NAME IS AFFIXED TO THE DEDICATION OF THIS PLAT AND HE ACKNOWLEDGED THE EXECUTION THEREOF TO BE HIS VOLUNTARY ACT AND DEED, AND FURTHER CAME HEROLD E. GROVE, PRESIDENT OF OAKS, INC., WHO IS PERSONALLY KNOWN TO BE THE IDENTICAL PERSON WHOSE NAME IS AFFIXED TO THE DEDICATION OF THIS PLAT AND HE ACKNOWLEDGED HIS EXECUTION THEREOF TO BE HIS VOLUNTARY ACT AND DEED AS SUCH OFFICER AND THE VOLUNTARY ACT AND DEED OF SAID CORPORATION AND THE SEAL OF SAID CORPORATION WAS THERETO AFFIXED BY ITS AUTHORITY.

WITNESS MY HAND AND NOTARIAL SEAL AT OMAHA, NEBRASKA, IN SAID COUNTY THE DATE LAST AFORESAID.

Robert H. Kuback
NOTARY PUBLIC

MY COMMISSION EXPIRES ON THE 21 DAY OF MAY, 1966

COUNTY TREASURER'S CERTIFICATE:

I HEREBY CERTIFY THAT THE RECORDS OF MY OFFICE SHOW NO TAXES DUE OR DELINQUENT UPON THE PROPERTY DESCRIBED IN THE CERTIFICATE OF SURVEY AS OF THIS 6th DAY OF Feb, A.D., 1962

Sam A. Howell
DOUGLAS COUNTY TREASURER

APPROVAL OF PLANNING COMMISSION:

THIS PLAT OF THE OAKS, THE LOTS NUMBERED AS SHOWN WAS APPROVED BY THE PLANNING COMMISSION OF THE VILLAGE OF MILLARD, NEBRASKA, ON THIS 7th DAY OF February, A.D., 1962.

Edward E. Nelson
CHAIRMAN OF PLANNING COMMISSION

APPROVAL OF THE BOARD OF TRUSTEES:

THIS PLAT OF THE OAKS, THE LOTS NUMBERED AS SHOWN WAS APPROVED BY THE BOARD OF TRUSTEES OF THE VILLAGE OF MILLARD, NEBRASKA, ON THIS 7th DAY OF February, A.D., 1962.

George P. Anderson
CHAIRMAN OF THE BOARD OF TRUSTEES

February 62-7-3 P *122.35*
36-44