

# THE PRESERVE ON ANTELOPE CREEK 8th ADDITION FINAL PLAT

(THIS PLAT IS BASED UPON PRELIMINARY PLAT "THE PRESERVE ON ANTELOPE CREEK" NO. 99027)



05013840

2005 MAR 15 P 2:49  
LANCASTER COUNTY, NE

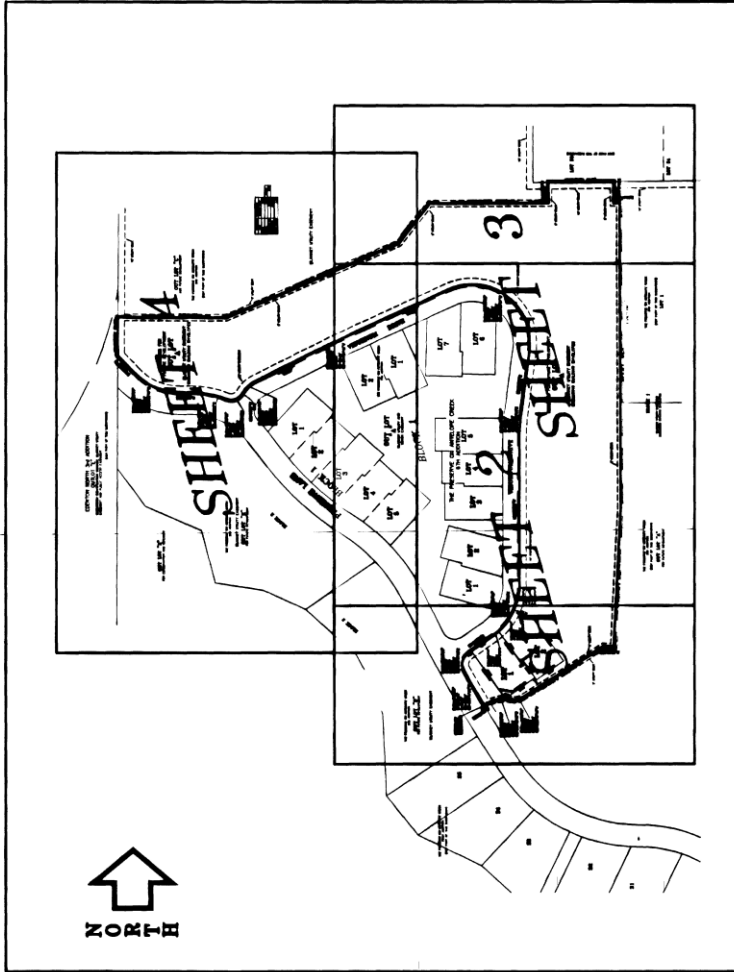
INST. NO 2005

013840

#4073

# 102.00

BLOCK  
ACRES  
FRAC. ACRES  
CHANGES  
REVISIONS  
DATE



## INDEX OF SHEETS

- SHEET 1: COVER SHEET
- SHEET 2: FINAL PLAT DRAWING
- SHEET 3: FINAL PLAT DRAWING
- SHEET 4: FINAL PLAT DRAWING AREA TABULATION
- SHEET 5: SURVEYOR'S CERTIFICATION LIEN HOLDER'S CONSENT, PLANNING DIRECTOR'S APPROVAL, DEDICATION & NOTARY

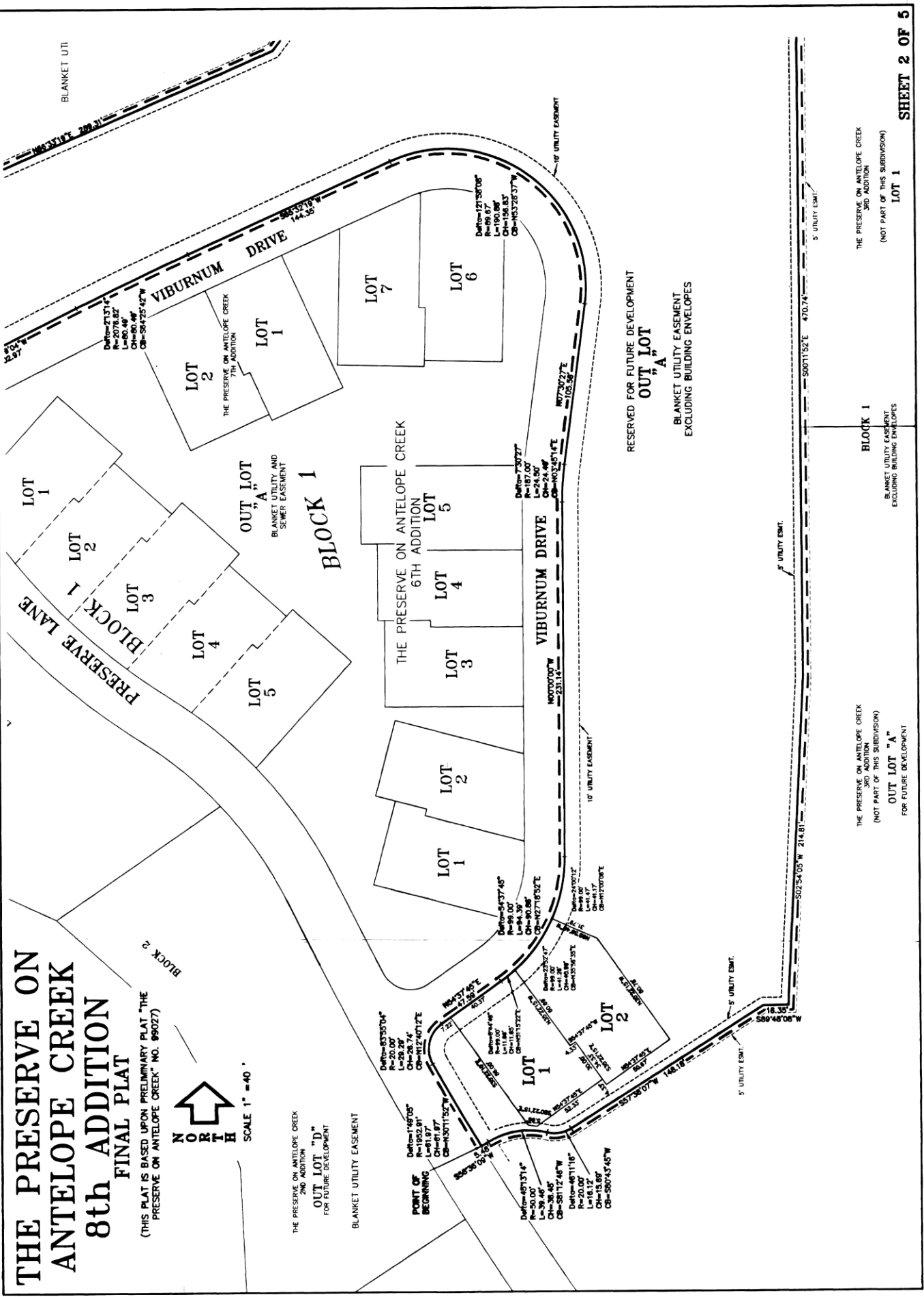
# THE PRESERVE ON ANTELOPE CREEK 8th ADDITION FINAL PLAT

(THIS PLAT IS BASED UPON PRELIMINARY PLAT "THE PRESERVE ON ANTELOPE CREEK" NO. 96027)



THE PRESERVE ON ANTELOPE CREEK 2ND ADDITION  
**OUT LOT "D"**  
 FOR FUTURE DEVELOPMENT

BLANKET UTILITY EASEMENT



THE PRESERVE ON ANTELOPE CREEK 3RD ADDITION  
 (NOT PART OF THIS SUBDIVISION)  
**OUT LOT "A"**  
 FOR FUTURE DEVELOPMENT

BLANKET UTILITY EASEMENT  
 EXCLUDING BUILDING ENVELOPES

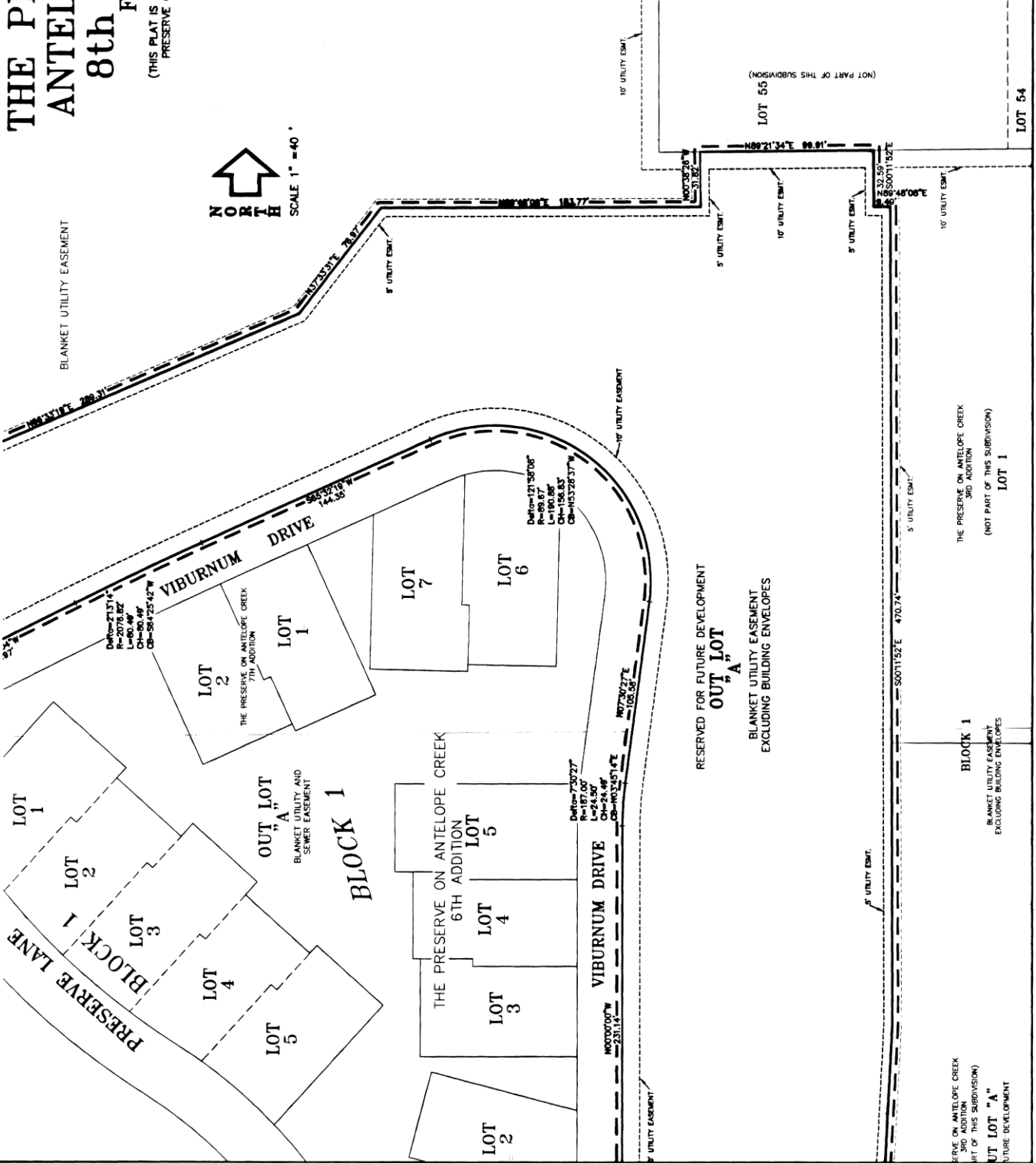
THE PRESERVE ON ANTELOPE CREEK 3RD ADDITION  
 (NOT PART OF THIS SUBDIVISION)  
**LOT 1**

# THE PRESERVE ON ANTELOPE CREEK 8th ADDITION FINAL PLAT

(THIS PLAT IS BASED UPON PRELIMINARY PLAT "THE PRESERVE ON ANTELOPE CREEK" NO. 99027)



BLANKET UTILITY EASEMENT



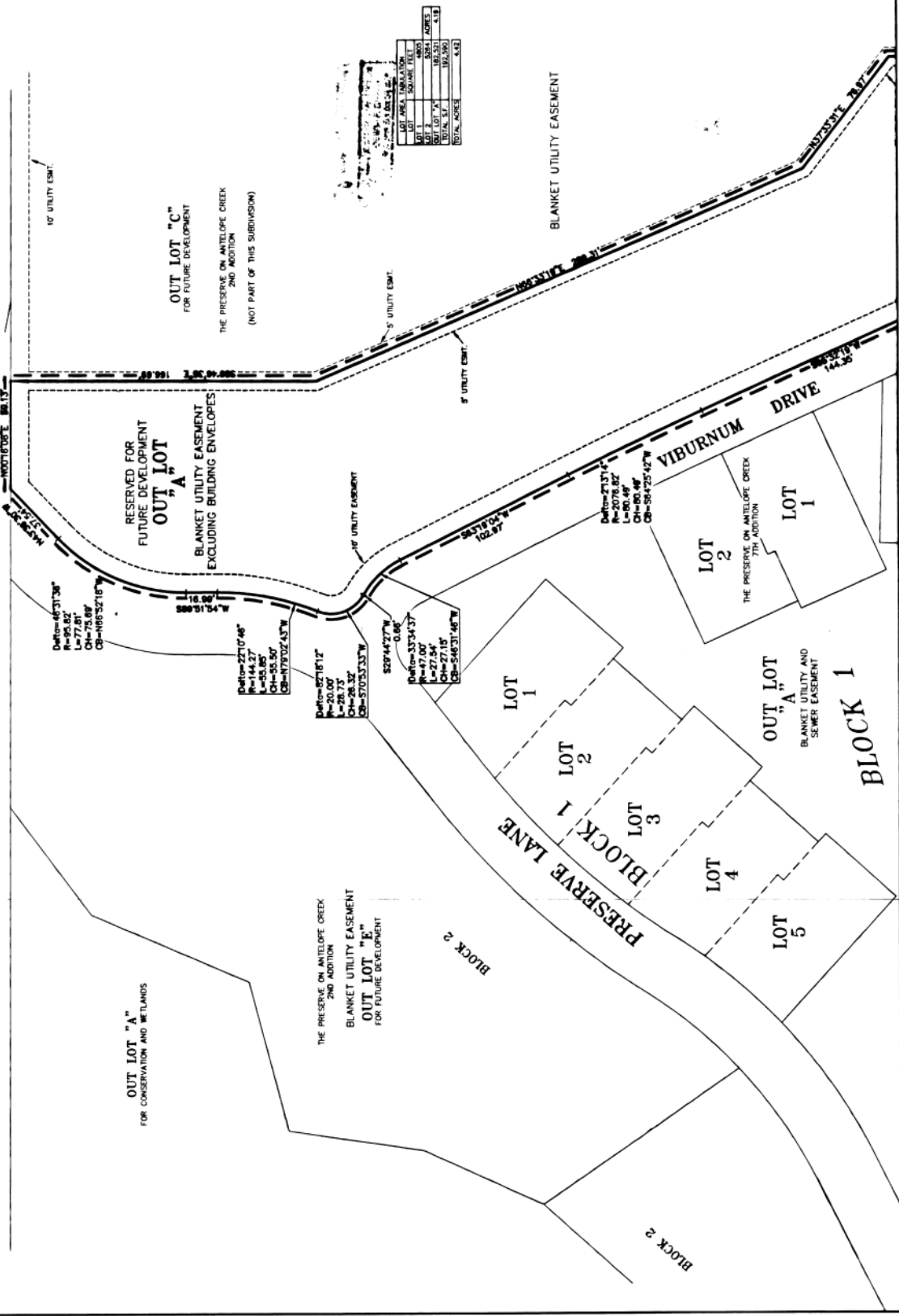
# THE PRESERVE ON ANTELOPE CREEK 8th ADDITION FINAL PLAT

(THIS PLAT IS BASED UPON PRELIMINARY PLAT "THE PRESERVE ON ANTELOPE CREEK" NO. 890277)



SCALE 1" = 40'

EDENTON NORTH 3rd ADDITION  
OUTLOT "E"  
SUBDIVISION IDENTIFICATION STORAGE, BLANKET UTILITY  
EASEMENT AND PUBLIC ACCESS EASEMENT  
(NOT PART OF THIS SUBDIVISION)



LOT AREA	UNIMPAVED	TOTAL
LOT 1	5,000	5,000
LOT 2	5,000	5,000
LOT 3	5,000	5,000
LOT 4	5,000	5,000
LOT 5	5,000	5,000
<b>TOTAL</b>	<b>25,000</b>	<b>25,000</b>

