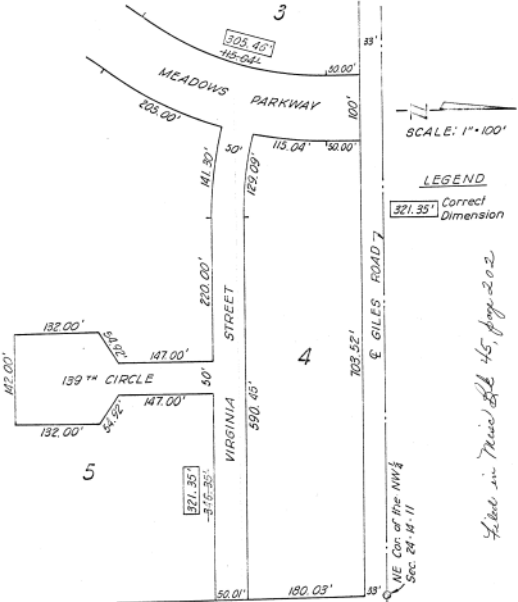


**AFFIDAVIT OF CORRECTION**  
**"THE MEADOWS"**

Part of the NW 1/4 of Section 24, T14S, R12E, of the 6th P.M., Saffy County, Nebraska.

This is a corrected Plat of Lots 3 and 5.

**Correction:**  
Was to certify that part of the dimensions in Lots 3 & 5 were shown in error on the original platting of The Meadows and to further certify that this plat correctly shows the originally intended dimensions.



*Lot 4 in T14S R12E S. 24, page 202*

**ELLIOTT & BLACK, INC.**  
2301 West Center Road  
Omaha, Nebraska 68124

**Don W. Elliott**  
Date: April 26, 1972  
L.S. 205



# THE MEADOWS

PART OF THE NW 1/4 OF SECTION 24,  
TOWNSHIP 14 NORTH, RANGE 12 EAST,  
OF THE 6TH P.M., SAFFY COUNTY, NEBR.

**OWNER'S DECLARATION**

I, hereby certify that I have prepared the property shown on this plat and that all easements have been located for all lines and corners in the Meadows, as well as the NW 1/4 of Section 24, Township 14 North, Range 12 East of the 6th P.M., Saffy County, Nebraska, when approximately described as follows:

Beginning at the Northeast corner of said NW 1/4 of Section 24, corner NE1/4 NE1/4 SW1/4 NW1/4 SW1/4, bearing along the North line of said NW 1/4 of Section 24, a distance of 95.56 feet to a point on the Eastern right-of-way line of Interstate Highway 80, and also along the 1910' of Interstate Highway NE1/4 NE1/4 SW1/4 NW1/4 SW1/4, along said Eastern right-of-way line of Interstate Highway 80, a distance of 103.23 feet, to a point on the North line of said Section 24, corner NE1/4 NE1/4 SW1/4 NW1/4 SW1/4, along said North line of Section 24, a distance of 210.24 feet, to the Northeast corner of said NW 1/4 of Section 24, corner NE1/4 NE1/4 SW1/4 NW1/4 SW1/4, along the East line of said NW 1/4 of Section 24, a distance of 210.24 feet to a point on the North line of Section 24, corner NE1/4 NE1/4 SW1/4 NW1/4 SW1/4, along said North line of the NW 1/4 of Section 24, a distance of 103.23 feet to the Point of Beginning.



**Don W. Elliott**  
Notary Public, State of Nebraska

**DEED RECORDS**

1. James M. Beckwith, grantor of the survey and subdivision of the Meadows, as shown on this plat.

2. James M. Beckwith, grantor of the survey and subdivision of the Meadows, as shown on this plat.

3. James M. Beckwith, grantor of the survey and subdivision of the Meadows, as shown on this plat.

4. James M. Beckwith, grantor of the survey and subdivision of the Meadows, as shown on this plat.

5. James M. Beckwith, grantor of the survey and subdivision of the Meadows, as shown on this plat.

6. James M. Beckwith, grantor of the survey and subdivision of the Meadows, as shown on this plat.

7. James M. Beckwith, grantor of the survey and subdivision of the Meadows, as shown on this plat.

8. James M. Beckwith, grantor of the survey and subdivision of the Meadows, as shown on this plat.

9. James M. Beckwith, grantor of the survey and subdivision of the Meadows, as shown on this plat.

10. James M. Beckwith, grantor of the survey and subdivision of the Meadows, as shown on this plat.

11. James M. Beckwith, grantor of the survey and subdivision of the Meadows, as shown on this plat.

12. James M. Beckwith, grantor of the survey and subdivision of the Meadows, as shown on this plat.

13. James M. Beckwith, grantor of the survey and subdivision of the Meadows, as shown on this plat.

14. James M. Beckwith, grantor of the survey and subdivision of the Meadows, as shown on this plat.

15. James M. Beckwith, grantor of the survey and subdivision of the Meadows, as shown on this plat.

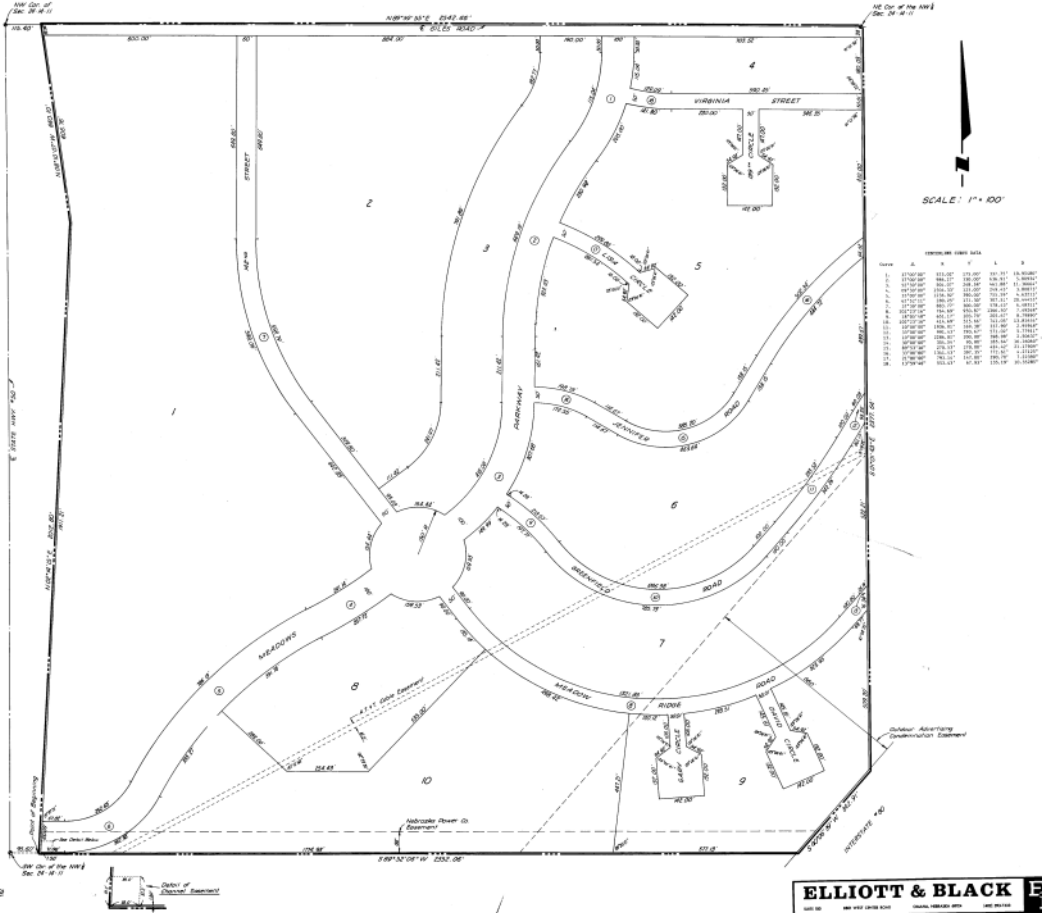
16. James M. Beckwith, grantor of the survey and subdivision of the Meadows, as shown on this plat.

17. James M. Beckwith, grantor of the survey and subdivision of the Meadows, as shown on this plat.

18. James M. Beckwith, grantor of the survey and subdivision of the Meadows, as shown on this plat.

19. James M. Beckwith, grantor of the survey and subdivision of the Meadows, as shown on this plat.

20. James M. Beckwith, grantor of the survey and subdivision of the Meadows, as shown on this plat.



**ELLIOTT & BLACK** **E<sub>3</sub>**  
2301 WEST CENTER ROAD, OMAHA, NEBRASKA 68124

**FILE FOR RECORD IN BOOK 25, PLATS 43  
PAGE 61 Carl & Hilbert**  
REGISTER OF SALES, SAFFY COUNTY NEB  
Serial Book 25, page 632

016134

61