



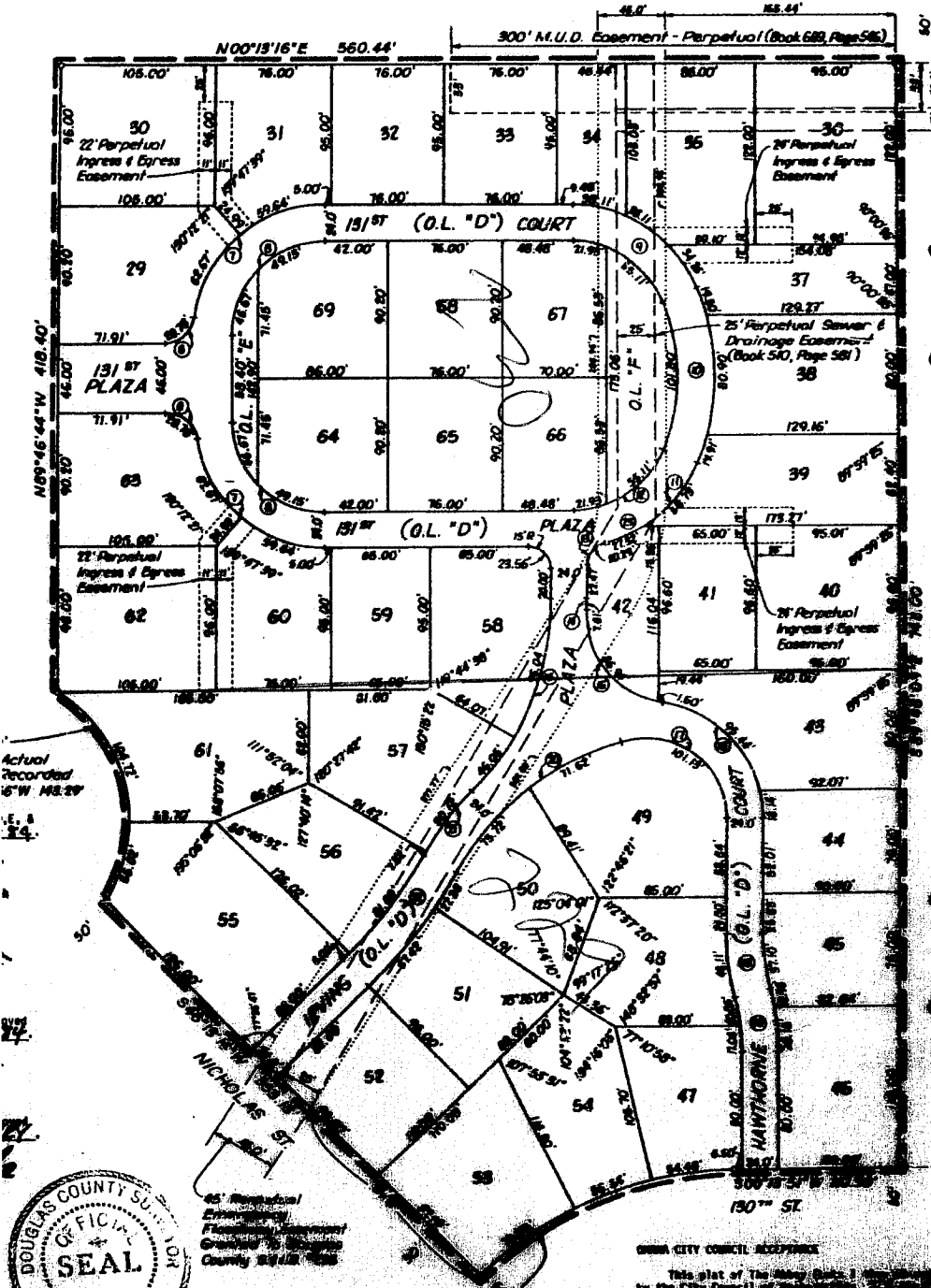
out of 229 + 230  
Candlewood

**ABBEY**

OUTLOTS "A", "B", "C", "D", "E" & "F"

131 and 403, Candlewood, an addition in Sec. 18, 18 County, Nebraska, in accord with the cluster of the Omaha Municipal Code.

NOTE: Perpetual private ingress and egress easements over all of Outlots "A" and "D" and other perpetual ingress and egress easements as shown on this plat, are granted in favor of Lots 1 thru 69 inclusive for pedestrian and motor vehicular traffic. Such easements shall be maintained and constructed as private roads in accordance with Chapter 53 of the Omaha Municipal Code.



5' x 150' Perpetual Sewer & Drainage Easement (Book 661, Page 119)

**CURVE DATA**

① Δ 76°29'26" R 20.05' T 15.76' L 26.70' D 286.47900'	② Δ 76°29'26" R 99.00' T 78.05' L 192.17' D 518.7455'	③ Δ 90°00'00" R 75.00' T 75.00' L 177.81' D 76.99440'
④ Δ 57°32'57" R 70.00' T 58.44' L 70.30' D 81.8514'	⑤ Δ 64°54'46" R 150.00' T 82.68' L 147.28' D 44.07369'	⑥ Δ 82°25'52" R 20.00' T 17.52' L 28.76' D 286.47900'
⑦ Δ 62°25'52" R 85.00' T 74.41' L 122.31' D 67.40682'	⑧ Δ 90°00'00" R 61.00' T 61.00' L 95.82' D 92.92754'	⑨ Δ 67°34'23" R 73.00' T 54.85' L 91.25' D 74.41013'
⑩ Δ 44°11'41" R 144.00' T 58.45' L 111.05' D 39.78875'	⑪ Δ 57°30'04" R 85.00' T 46.78' L 88.25' D 64.57780'	⑫ Δ 77°59'45" R 15.00' T 12.00' L 30.32' D 38.97820'
⑬ Δ 67°54'23" R 65.00' T 45.77' L 71.04' D 82.74738'	⑭ Δ 77°59'45" R 15.00' T 12.00' L 30.32' D 38.97820'	⑮ Δ 44°11'41" R 144.00' T 58.45' L 111.05' D 39.78875'
⑯ Δ 67°54'23" R 65.00' T 45.77' L 71.04' D 82.74738'	⑰ Δ 44°11'41" R 144.00' T 58.45' L 111.05' D 39.78875'	⑱ Δ 57°30'04" R 85.00' T 46.78' L 88.25' D 64.57780'
⑲ Δ 67°54'23" R 65.00' T 45.77' L 71.04' D 82.74738'	⑳ Δ 44°11'41" R 144.00' T 58.45' L 111.05' D 39.78875'	㉑ Δ 57°30'04" R 85.00' T 46.78' L 88.25' D 64.57780'
㉒ Δ 67°54'23" R 65.00' T 45.77' L 71.04' D 82.74738'	㉓ Δ 44°11'41" R 144.00' T 58.45' L 111.05' D 39.78875'	㉔ Δ 57°30'04" R 85.00' T 46.78' L 88.25' D 64.57780'
㉕ Δ 67°54'23" R 65.00' T 45.77' L 71.04' D 82.74738'	㉖ Δ 44°11'41" R 144.00' T 58.45' L 111.05' D 39.78875'	㉗ Δ 57°30'04" R 85.00' T 46.78' L 88.25' D 64.57780'
㉘ Δ 67°54'23" R 65.00' T 45.77' L 71.04' D 82.74738'	㉙ Δ 44°11'41" R 144.00' T 58.45' L 111.05' D 39.78875'	㉚ Δ 57°30'04" R 85.00' T 46.78' L 88.25' D 64.57780'
㉛ Δ 67°54'23" R 65.00' T 45.77' L 71.04' D 82.74738'	㉜ Δ 44°11'41" R 144.00' T 58.45' L 111.05' D 39.78875'	㉝ Δ 57°30'04" R 85.00' T 46.78' L 88.25' D 64.57780'
㉞ Δ 67°54'23" R 65.00' T 45.77' L 71.04' D 82.74738'	㉟ Δ 44°11'41" R 144.00' T 58.45' L 111.05' D 39.78875'	㊱ Δ 57°30'04" R 85.00' T 46.78' L 88.25' D 64.57780'
㊲ Δ 67°54'23" R 65.00' T 45.77' L 71.04' D 82.74738'	㊳ Δ 44°11'41" R 144.00' T 58.45' L 111.05' D 39.78875'	㊴ Δ 57°30'04" R 85.00' T 46.78' L 88.25' D 64.57780'
㊵ Δ 67°54'23" R 65.00' T 45.77' L 71.04' D 82.74738'	㊶ Δ 44°11'41" R 144.00' T 58.45' L 111.05' D 39.78875'	㊷ Δ 57°30'04" R 85.00' T 46.78' L 88.25' D 64.57780'
㊸ Δ 67°54'23" R 65.00' T 45.77' L 71.04' D 82.74738'	㊹ Δ 44°11'41" R 144.00' T 58.45' L 111.05' D 39.78875'	㊺ Δ 57°30'04" R 85.00' T 46.78' L 88.25' D 64.57780'



OMAHA CITY COUNCIL RECEIVED  
This plat of The Abbey Subdivision (Book 1733, Page 29) was approved by the City Council of Omaha, Nebraska, on 10/15/50.

COUNTY TREASURER RECEIVED  
This is to certify that the above described plat is correct and that the proceeds of the sale of the same are being held by the County Treasurer.

DOUGLAS COUNTY NEBRASKA OFFICIAL SEAL

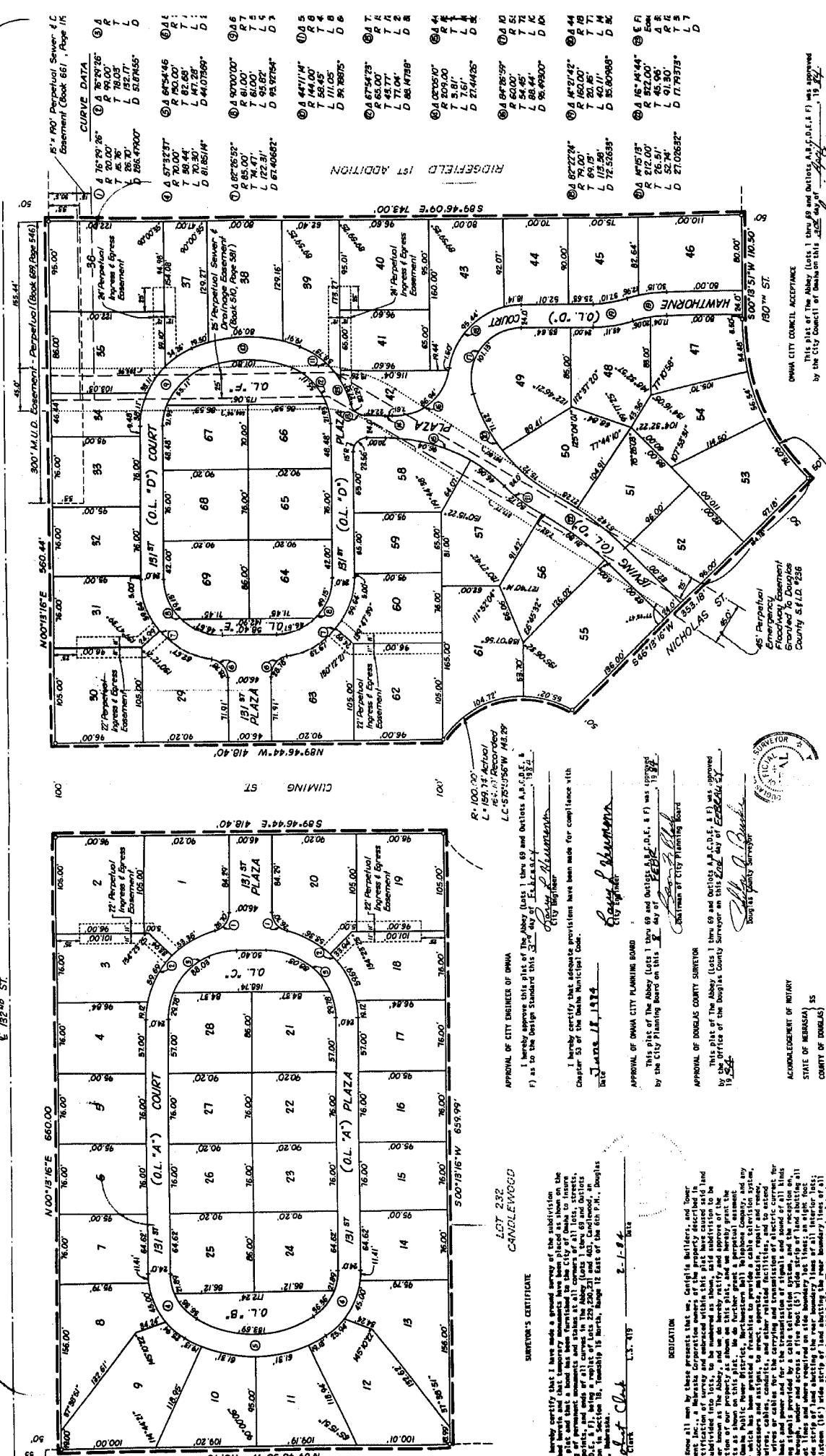
STANLEY R. BALES  
Notary Public, Exp. June 14, 1987

AND RECORDED IN THE REGISTER OF DEEDS OFFICE IN DOUGLAS COUNTY, NEBRASKA  
AT 10:45 A.M. C. HAROLD OSTLER, REGISTER OF DEEDS

WILLOTT & ASSOCIATES  
PLATT & ASSOCIATES

THE ABBEY

LOTS 1-69 INCLUSIVE & OUTLOTS "A", "B", "C", "D", "E", "F" & "G"...



APPROVAL OF CITY ENGINEER OF DUBLIN  
I hereby approve this plat of The Abbey (Lots 1 thru 69 and Outlots A, B, C, D, E, F & G) as shown on this plat as to the Design Standard this [blank] day of [blank] 195[blank].

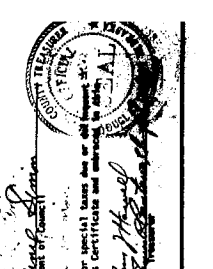
APPROVAL OF DUBLIN CITY PLANNING BOARD  
I hereby certify that adequate provisions have been made for compliance with Chapter 53 of the Dublin Municipal Code.

APPROVAL OF DUBLIN COUNTY SURVEYOR  
This plat of The Abbey (Lots 1 thru 69 and Outlots A, B, C, D, E, F & G) was approved by the Office of the Douglas County Surveyor on this [blank] day of [blank] 195[blank].

ACKNOWLEDGEMENT OF NOTARY  
STATE OF IOWA  
COUNTY OF DUBLIN

ON this [blank] day of [blank] 195[blank], before me, the undersigned, a Notary Public in and for the County of Douglas, State of Iowa, the following persons whose names are affixed to their voluntary act and deed and the voluntary act and deed of said corporation and that the Corporate Seal of the said corporation was thereto affixed by their authority.

Witness my hand and Notarial Seal at Dublin in said County the day and year last above written.



APPROVAL OF DUBLIN CITY COUNCIL  
This plat of The Abbey (Lots 1 thru 69 and Outlots A, B, C, D, E, F & G) was approved by the City Council of Dublin on this [blank] day of [blank] 195[blank].

APPROVAL OF DUBLIN CITY TREASURER  
This is to certify that I find in regular or special books and in the records of the City of Dublin that the property described in the foregoing Certificate and map is as shown on this plat as shown by the records of this office.

UNPLATTED  
N 89° 46' 50" W 418.40'  
N 00° 12' 16" E 560.00'  
S 00° 13' 16" W 659.99'