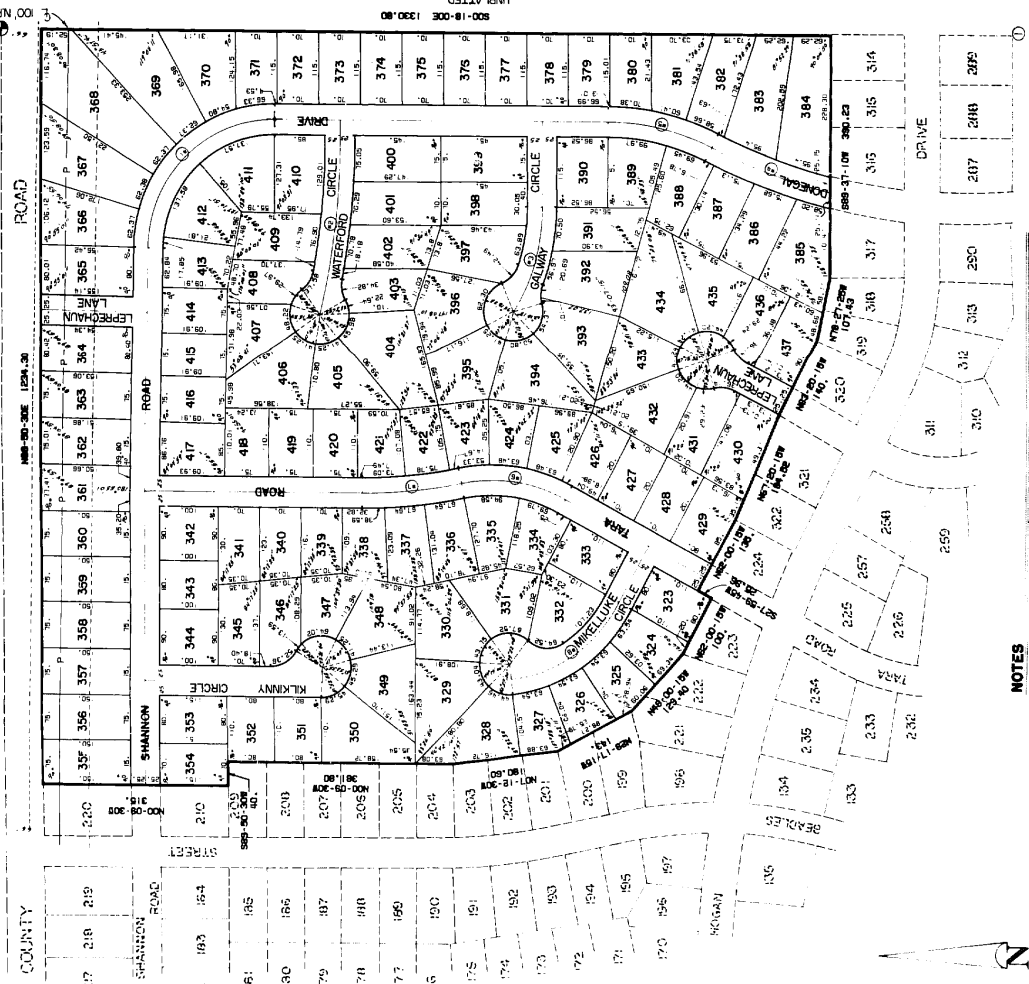


TARA HEIGHTS

LOTS 323 THRU 437 INCLUSIVE
BEING A PLATING OF A PART OF THE S.W. 1/4 OF SECTION
23, T14N R12E OF THE 6TH P.M., SAPPY COUNTY, NEBRASKA



NOTES
ALL CUL-DE-SAC HAVE 50' RADIUS
REVERSE CURVES AT THE THROAT OF THE CUL-DE-SACS HAVE 50' RADIUS
DISTANCES SHOWN ON CURVES ARE ARC DISTANCES NOT CHORD DISTANCES

021365

SECTION 23 CERTIFICATE
I, the undersigned, being a duly qualified surveyor and engineer, do hereby certify that I have made a personal inspection of the subdivision described herein, and that the same conforms to the requirements of the laws of the State of Nebraska, and that the same is correct and true to the original plat and that the same is correct and true to the original plat and that the same is correct and true to the original plat...

STATE OF NEBRASKA
On this 22nd day of February, 1915, before me, a Notary Public, duly commissioned and qualified in and for said county, and I have seen the above named party, who is the owner of the property described in the foregoing plat, and they did acknowledge their execution of the foregoing plat to be their voluntary act and deed, and the voluntary act and deed of said corporation.

ACKNOWLEDGMENT OF SURVEYOR
I, the undersigned, do hereby certify that I am a duly qualified surveyor and engineer, and that I have made a personal inspection of the subdivision described herein, and that the same conforms to the requirements of the laws of the State of Nebraska, and that the same is correct and true to the original plat and that the same is correct and true to the original plat...

CITY ENGINEER'S CERTIFICATE
This plat of TARA HEIGHTS was approved and accepted by the City Engineer of SAPPY COUNTY, NEBRASKA, on this 22nd day of February, 1915.

COUNTY TREASURER'S CERTIFICATE
This plat of TARA HEIGHTS was approved and accepted by the County Treasurer of SAPPY COUNTY, NEBRASKA, on this 22nd day of February, 1915.

REVISIONS

NO.	DATE	DESCRIPTION
1	2-25-12	AS SHOWN

FILED FOR RECORD
FILED FOR RECORD IN BOOK 50 OF SAPPY COUNTY NEB.
Clerk of SAPPY COUNTY NEB.
Date 9/4 page 523

LAMP FYNARSON AND TILLY ARCHITECTS
TARA HEIGHTS - 7th PLATING - FINAL PLAT