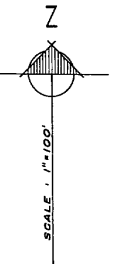
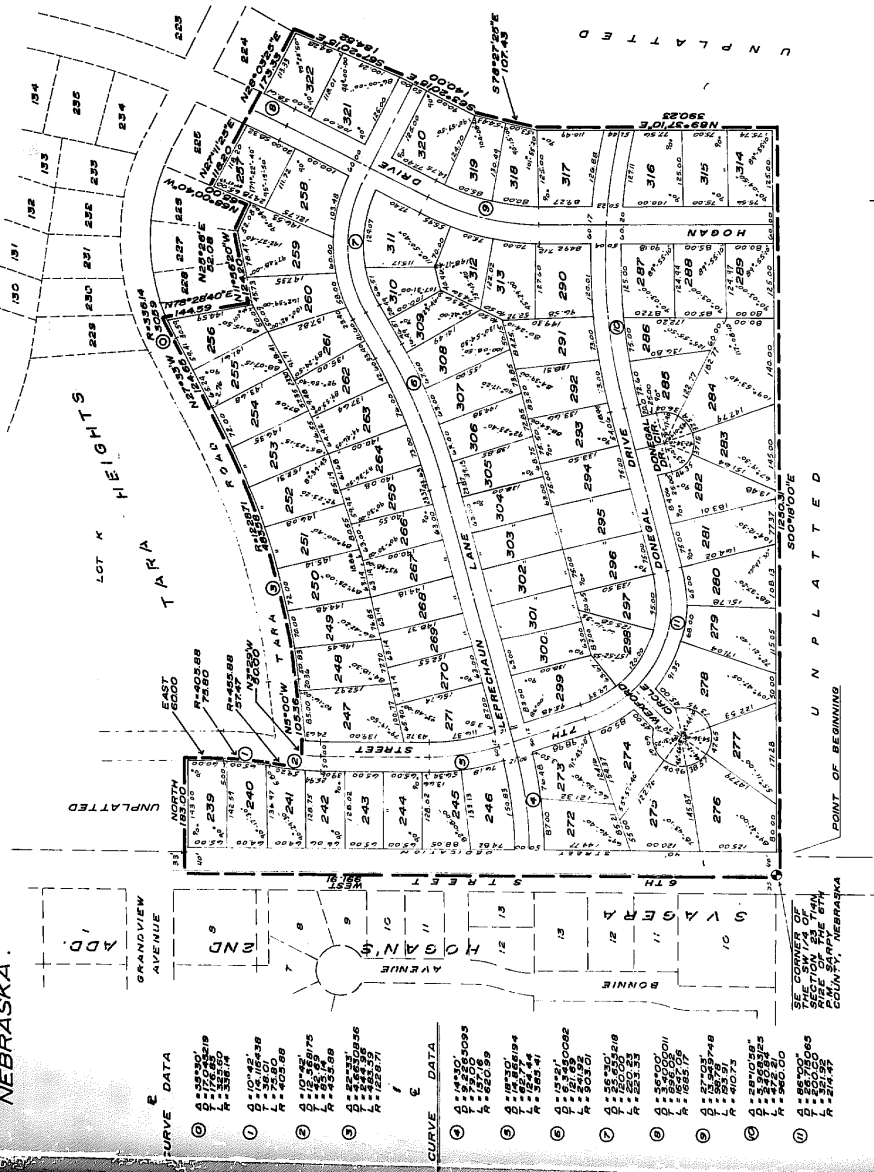


# TARA HEIGHTS

LOTS 239 THRU 322, INCLUSIVE

BEING A PLATTING OF PART OF THE E 1/2 OF THE SW 1/4 OF SECTION 23 T14N R12E OF THE 6TH R12E OF SAPPY COUNTY, NEBRASKA.



N. O. T. E  
DISTANCES SHOWN ON CURVES ARE ARC DISTANCES NOT CHORD DISTANCES

**CURVE DATA**

Curve No.	Stationing	Length (L)	Radius (R)	Chord (C)	Delta (Δ)
1	14300+00 to 14300+00	0.00	0.00	0.00	0°00'00"
2	14300+00 to 14300+00	0.00	0.00	0.00	0°00'00"
3	14300+00 to 14300+00	0.00	0.00	0.00	0°00'00"
4	14300+00 to 14300+00	0.00	0.00	0.00	0°00'00"
5	14300+00 to 14300+00	0.00	0.00	0.00	0°00'00"
6	14300+00 to 14300+00	0.00	0.00	0.00	0°00'00"
7	14300+00 to 14300+00	0.00	0.00	0.00	0°00'00"
8	14300+00 to 14300+00	0.00	0.00	0.00	0°00'00"
9	14300+00 to 14300+00	0.00	0.00	0.00	0°00'00"
10	14300+00 to 14300+00	0.00	0.00	0.00	0°00'00"
11	14300+00 to 14300+00	0.00	0.00	0.00	0°00'00"
12	14300+00 to 14300+00	0.00	0.00	0.00	0°00'00"
13	14300+00 to 14300+00	0.00	0.00	0.00	0°00'00"
14	14300+00 to 14300+00	0.00	0.00	0.00	0°00'00"
15	14300+00 to 14300+00	0.00	0.00	0.00	0°00'00"
16	14300+00 to 14300+00	0.00	0.00	0.00	0°00'00"
17	14300+00 to 14300+00	0.00	0.00	0.00	0°00'00"
18	14300+00 to 14300+00	0.00	0.00	0.00	0°00'00"
19	14300+00 to 14300+00	0.00	0.00	0.00	0°00'00"
20	14300+00 to 14300+00	0.00	0.00	0.00	0°00'00"
21	14300+00 to 14300+00	0.00	0.00	0.00	0°00'00"
22	14300+00 to 14300+00	0.00	0.00	0.00	0°00'00"
23	14300+00 to 14300+00	0.00	0.00	0.00	0°00'00"
24	14300+00 to 14300+00	0.00	0.00	0.00	0°00'00"
25	14300+00 to 14300+00	0.00	0.00	0.00	0°00'00"
26	14300+00 to 14300+00	0.00	0.00	0.00	0°00'00"
27	14300+00 to 14300+00	0.00	0.00	0.00	0°00'00"
28	14300+00 to 14300+00	0.00	0.00	0.00	0°00'00"
29	14300+00 to 14300+00	0.00	0.00	0.00	0°00'00"
30	14300+00 to 14300+00	0.00	0.00	0.00	0°00'00"
31	14300+00 to 14300+00	0.00	0.00	0.00	0°00'00"
32	14300+00 to 14300+00	0.00	0.00	0.00	0°00'00"
33	14300+00 to 14300+00	0.00	0.00	0.00	0°00'00"
34	14300+00 to 14300+00	0.00	0.00	0.00	0°00'00"
35	14300+00 to 14300+00	0.00	0.00	0.00	0°00'00"
36	14300+00 to 14300+00	0.00	0.00	0.00	0°00'00"
37	14300+00 to 14300+00	0.00	0.00	0.00	0°00'00"
38	14300+00 to 14300+00	0.00	0.00	0.00	0°00'00"
39	14300+00 to 14300+00	0.00	0.00	0.00	0°00'00"
40	14300+00 to 14300+00	0.00	0.00	0.00	0°00'00"
41	14300+00 to 14300+00	0.00	0.00	0.00	0°00'00"
42	14300+00 to 14300+00	0.00	0.00	0.00	0°00'00"
43	14300+00 to 14300+00	0.00	0.00	0.00	0°00'00"
44	14300+00 to 14300+00	0.00	0.00	0.00	0°00'00"
45	14300+00 to 14300+00	0.00	0.00	0.00	0°00'00"
46	14300+00 to 14300+00	0.00	0.00	0.00	0°00'00"
47	14300+00 to 14300+00	0.00	0.00	0.00	0°00'00"
48	14300+00 to 14300+00	0.00	0.00	0.00	0°00'00"
49	14300+00 to 14300+00	0.00	0.00	0.00	0°00'00"
50	14300+00 to 14300+00	0.00	0.00	0.00	0°00'00"
51	14300+00 to 14300+00	0.00	0.00	0.00	0°00'00"
52	14300+00 to 14300+00	0.00	0.00	0.00	0°00'00"
53	14300+00 to 14300+00	0.00	0.00	0.00	0°00'00"
54	14300+00 to 14300+00	0.00	0.00	0.00	0°00'00"
55	14300+00 to 14300+00	0.00	0.00	0.00	0°00'00"
56	14300+00 to 14300+00	0.00	0.00	0.00	0°00'00"
57	14300+00 to 14300+00	0.00	0.00	0.00	0°00'00"
58	14300+00 to 14300+00	0.00	0.00	0.00	0°00'00"
59	14300+00 to 14300+00	0.00	0.00	0.00	0°00'00"
60	14300+00 to 14300+00	0.00	0.00	0.00	0°00'00"
61	14300+00 to 14300+00	0.00	0.00	0.00	0°00'00"
62	14300+00 to 14300+00	0.00	0.00	0.00	0°00'00"
63	14300+00 to 14300+00	0.00	0.00	0.00	0°00'00"
64	14300+00 to 14300+00	0.00	0.00	0.00	0°00'00"
65	14300+00 to 14300+00	0.00	0.00	0.00	0°00'00"
66	14300+00 to 14300+00	0.00	0.00	0.00	0°00'00"
67	14300+00 to 14300+00	0.00	0.00	0.00	0°00'00"
68	14300+00 to 14300+00	0.00	0.00	0.00	0°00'00"
69	14300+00 to 14300+00	0.00	0.00	0.00	0°00'00"
70	14300+00 to 14300+00	0.00	0.00	0.00	0°00'00"
71	14300+00 to 14300+00	0.00	0.00	0.00	0°00'00"
72	14300+00 to 14300+00	0.00	0.00	0.00	0°00'00"
73	14300+00 to 14300+00	0.00	0.00	0.00	0°00'00"
74	14300+00 to 14300+00	0.00	0.00	0.00	0°00'00"
75	14300+00 to 14300+00	0.00	0.00	0.00	0°00'00"
76	14300+00 to 14300+00	0.00	0.00	0.00	0°00'00"
77	14300+00 to 14300+00	0.00	0.00	0.00	0°00'00"
78	14300+00 to 14300+00	0.00	0.00	0.00	0°00'00"
79	14300+00 to 14300+00	0.00	0.00	0.00	0°00'00"
80	14300+00 to 14300+00	0.00	0.00	0.00	0°00'00"
81	14300+00 to 14300+00	0.00	0.00	0.00	0°00'00"
82	14300+00 to 14300+00	0.00	0.00	0.00	0°00'00"
83	14300+00 to 14300+00	0.00	0.00	0.00	0°00'00"
84	14300+00 to 14300+00	0.00	0.00	0.00	0°00'00"
85	14300+00 to 14300+00	0.00	0.00	0.00	0°00'00"
86	14300+00 to 14300+00	0.00	0.00	0.00	0°00'00"
87	14300+00 to 14300+00	0.00	0.00	0.00	0°00'00"
88	14300+00 to 14300+00	0.00	0.00	0.00	0°00'00"
89	14300+00 to 14300+00	0.00	0.00	0.00	0°00'00"
90	14300+00 to 14300+00	0.00	0.00	0.00	0°00'00"
91	14300+00 to 14300+00	0.00	0.00	0.00	0°00'00"
92	14300+00 to 14300+00	0.00	0.00	0.00	0°00'00"
93	14300+00 to 14300+00	0.00	0.00	0.00	0°00'00"
94	14300+00 to 14300+00	0.00	0.00	0.00	0°00'00"
95	14300+00 to 14300+00	0.00	0.00	0.00	0°00'00"
96	14300+00 to 14300+00	0.00	0.00	0.00	0°00'00"
97	14300+00 to 14300+00	0.00	0.00	0.00	0°00'00"
98	14300+00 to 14300+00	0.00	0.00	0.00	0°00'00"
99	14300+00 to 14300+00	0.00	0.00	0.00	0°00'00"
100	14300+00 to 14300+00	0.00	0.00	0.00	0°00'00"

**SURVEYOR'S CERTIFICATE**

I, **WILLIAM W. WOODRUFF**, Surveyor and notary public, do hereby certify that the above described platting was prepared and approved by me on this 14th day of October, 1966, at Omaha, Nebraska, in accordance with the provisions of the Statutes of the State of Nebraska, and that the same is a true and correct copy of the original platting on file in my office.

WILLIAM W. WOODRUFF, Surveyor and Notary Public  
1407 N. 16th St., Omaha, Nebraska 68105

**INDENTURES**

That the above described platting was prepared and approved by me on this 14th day of October, 1966, at Omaha, Nebraska, in accordance with the provisions of the Statutes of the State of Nebraska, and that the same is a true and correct copy of the original platting on file in my office.

WILLIAM W. WOODRUFF, Surveyor and Notary Public  
1407 N. 16th St., Omaha, Nebraska 68105

**STATE OF NEBRASKA**

On this 14th day of October, 1966, before me, a notary public, duly commissioned and qualified, in and for the County of Douglas, State of Nebraska, the following named persons, to-wit: **Michael J. Hoagan, President** and **June E. Hoagan, Secretary** of the **HOAGAN DEVELOPMENT COMPANY**, a Nebraska corporation, personally appeared and acknowledged to me that they executed the foregoing instrument for the purposes and consideration therein expressed, and that they are the legal owners of the premises therein described.

My commission expires **Dec. 13, 1969**.

**APPROVAL OF CITY COUNCIL, DAVENPORT, NEBRASKA**

This plat of TARA HEIGHTS was approved and accepted by the City Council of Davenport, Nebraska, on this 14th day of October, 1966.

**APPROVAL OF PLANNING COMMISSION, DAVENPORT, NEBRASKA**

This plat of TARA HEIGHTS was approved and accepted by the Planning Commission of Davenport, Nebraska, on this 14th day of October, 1966.

**APPROVAL OF PLANNING COMMISSION, DAVENPORT, NEBRASKA**

This plat of TARA HEIGHTS was approved and accepted by the Planning Commission of Davenport, Nebraska, on this 14th day of October, 1966.

**APPROVAL OF PLANNING COMMISSION, DAVENPORT, NEBRASKA**

This plat of TARA HEIGHTS was approved and accepted by the Planning Commission of Davenport, Nebraska, on this 14th day of October, 1966.

**APPROVAL OF PLANNING COMMISSION, DAVENPORT, NEBRASKA**

This plat of TARA HEIGHTS was approved and accepted by the Planning Commission of Davenport, Nebraska, on this 14th day of October, 1966.

**RECORDING INFORMATION**

FILED FOR RECORD IN SAPPY COUNTY NEBR. ON **Oct 19 1966** AT **10:00** CLOCK P.M.

AND RECORDED IN BOOK **117** PAGE **117** REGISTER OF DEEDS.

**TARA HEIGHTS**

**FINAL PLAT**

**389-10**