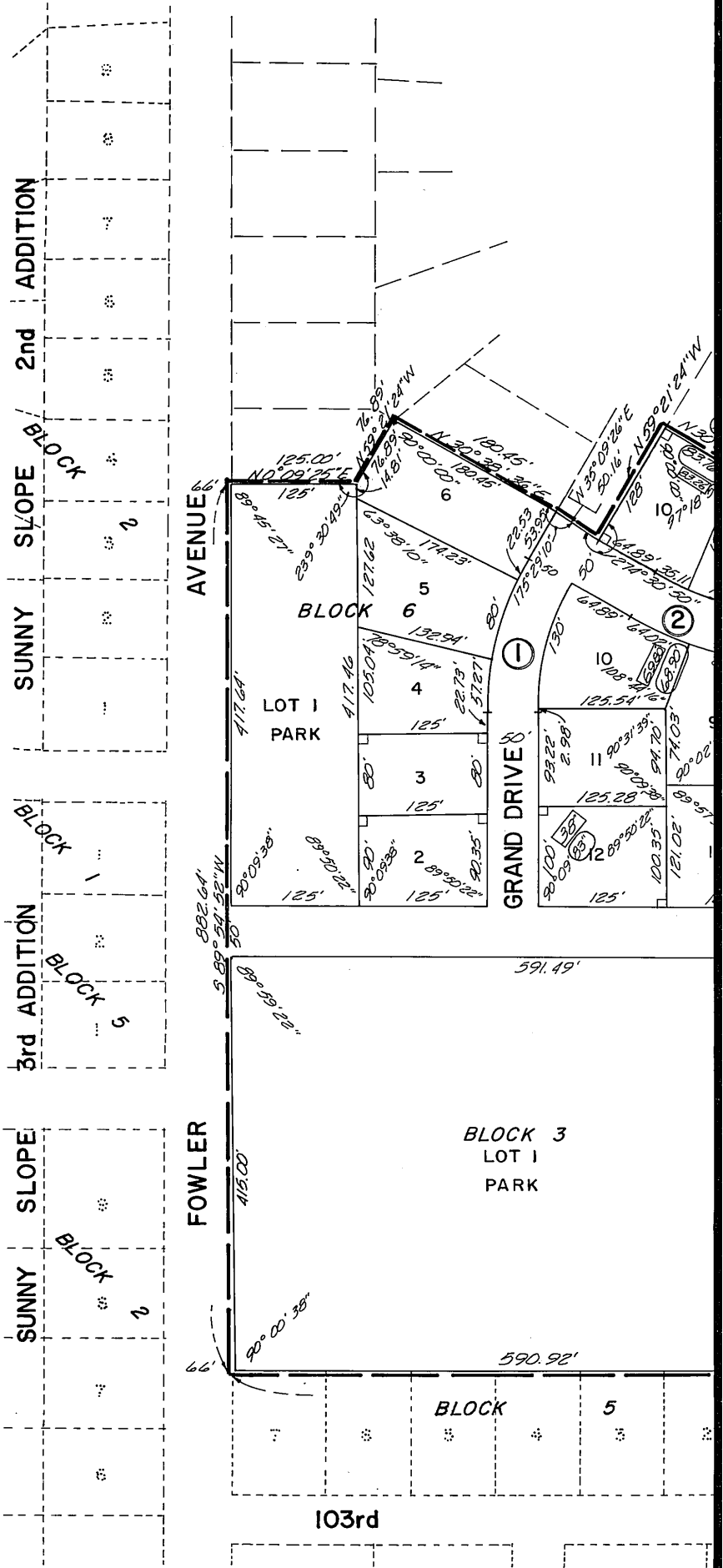


⊕ CURVE DATA

①	Δ	30° 43' 44"
	R	272.95'
	D	20° 59' 29"
	T	75.00'
	L	146.39'
②	Δ	30° 29' 11"
	R	300.00'
	D	19° 05' 55"
	T	81.75'
	L	159.63'

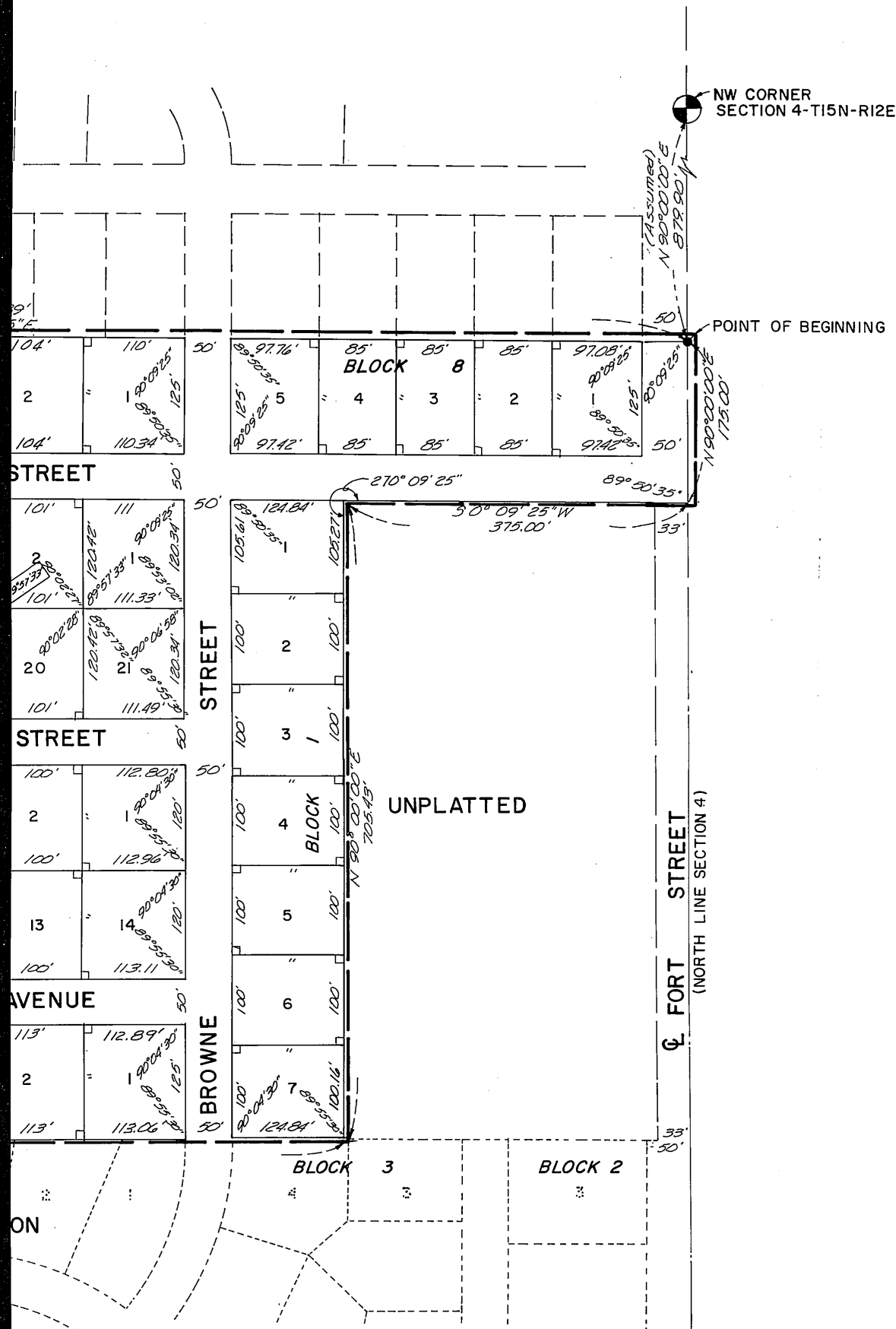




# MINY SLOPE

## ATTING, 1ST ADDITION

SECTION 4-T15N-R12E, DOUGLAS COUNTY, NEBRASKA



CORRECTION PLAT  
CORRECTION PLAT  
AFFIDAVIT OF CORRECTION

This is to certify that the distance and angles encircled on this plat were shown in error on the original platting and Surveyor's Certificate and I further certify that the distances and angles enclosed within a rectangle as shown on this plat are the true, correct and the originally intended distances and angles.

In the original Surveyor's Certificate the distance shown in the eleventh course which reads "110.86 feet," should be amended to read "110.36 feet."

Dated January 17, AD. 1967

Carl J. Nussrollah  
Carl J. Nussrollah  
Reg. L.S. #199



4. FILED IN NUMERICAL INDEX AND RECORDED IN THE REGISTER OF DEEDS OFFICE IN DODD COUNTY, FLORIDA  
17 DAY January 1967 AT 1:50 P.M. THOMAS A. O'CONNOR, REGISTER OF DEEDS 9.75

DOUGLAS DAVIS  
SURVEYOR & CARTER