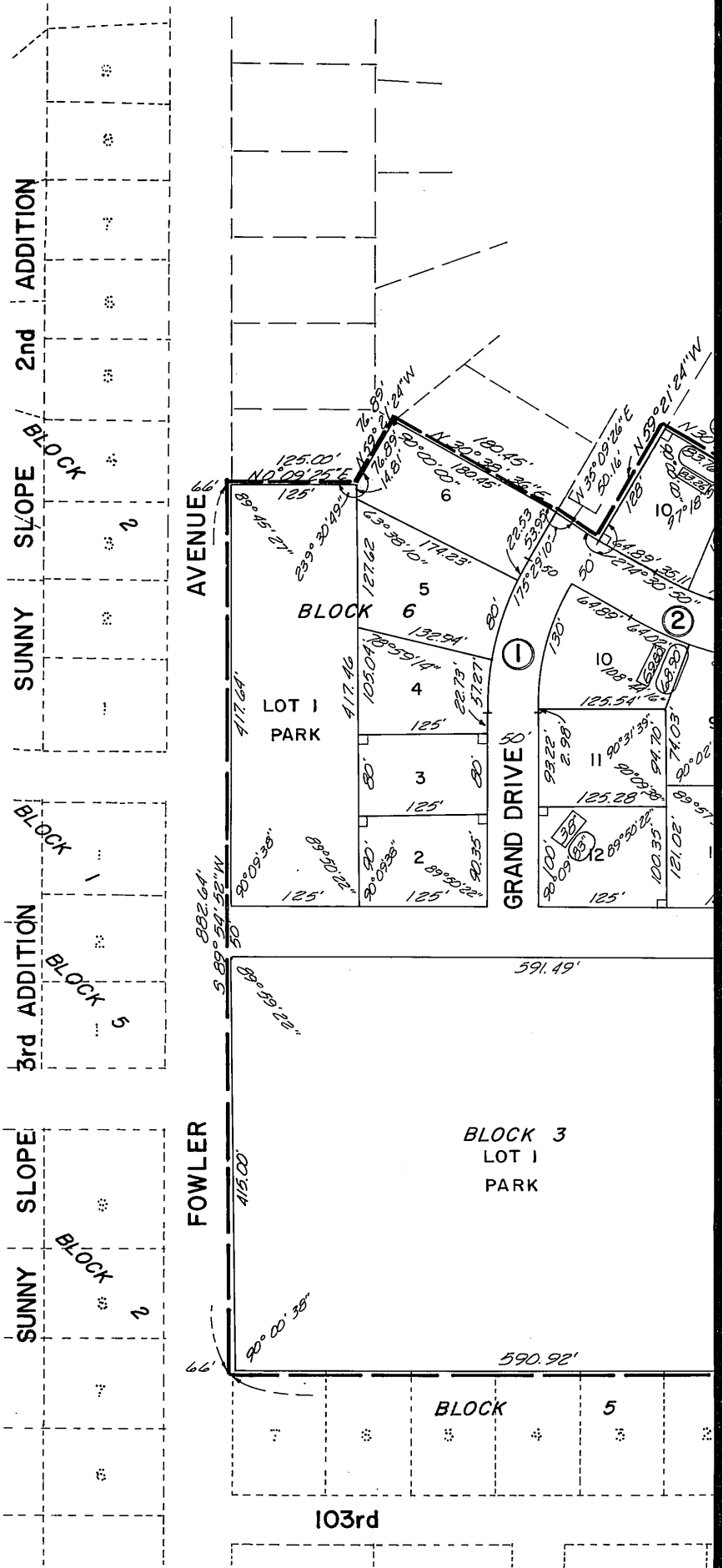


⊕ CURVE DATA

①	Δ	30° 43' 44"
	R	272.95'
	D	20° 59' 29"
	T	75.00'
	L	146.39'
②	Δ	30° 29' 11"
	R	300.00'
	D	19° 05' 55"
	T	81.75'
	L	159.63'



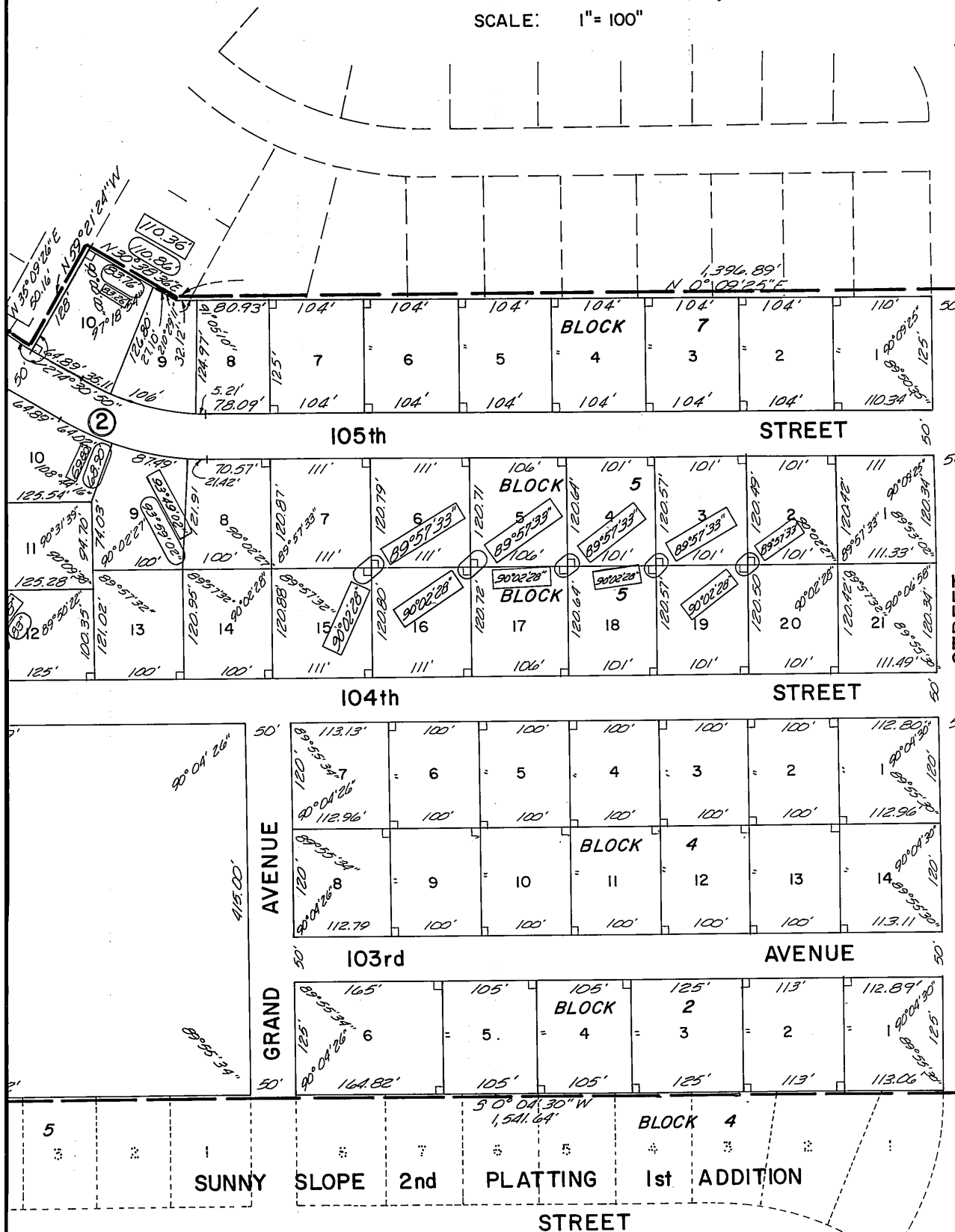
SUNNY

3RD PLATTING

A SUBDIVISION IN THE NW 1/4 SECTION 4-



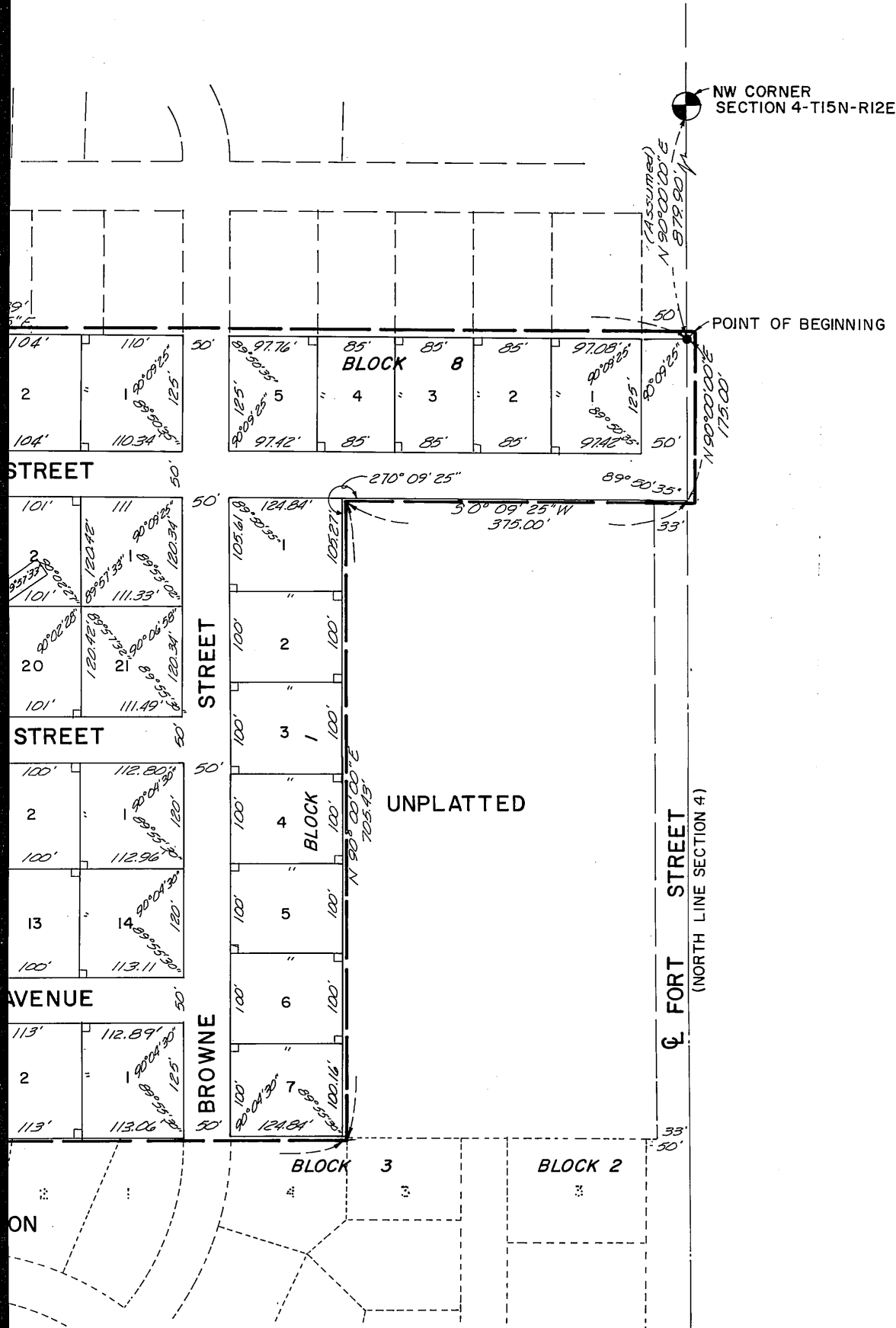
SCALE: 1" = 100"



MINY SLOPE

PLATTING, 1ST ADDITION

SECTION 4-T15N-R12E, DOUGLAS COUNTY, NEBRASKA



CORRECTION PLAT
CORRECTION PLAT
AFFIDAVIT OF CORRECTION

This is to certify that the distance and angles encircled on this plat were shown in error on the original platting and Surveyor's Certificate and I further certify that the distances and angles enclosed within a rectangle as shown on this plat are the true, correct and the originally intended distances and angles.

In the original Surveyor's Certificate the distance shown in the eleventh course which reads "110.86 feet," should be amended to read "110.36 feet."

Dated January 17, A.D. 1967

Carl J. Nussrollah
Carl J. Nussrollah
Reg. L.S. #199



4. FILED IN NUMERICAL INDEX AND RECORDED IN THE REGISTER OF DEEDS OFFICE IN BROWARD COUNTY, FLORIDA
17 DAY January 1967 AT 1:50 P.M. THOMAS J. O'CONNOR, REGISTER OF DEEDS 9.75

DOUGLAS DAVIS
SURVEYOR & CARTER