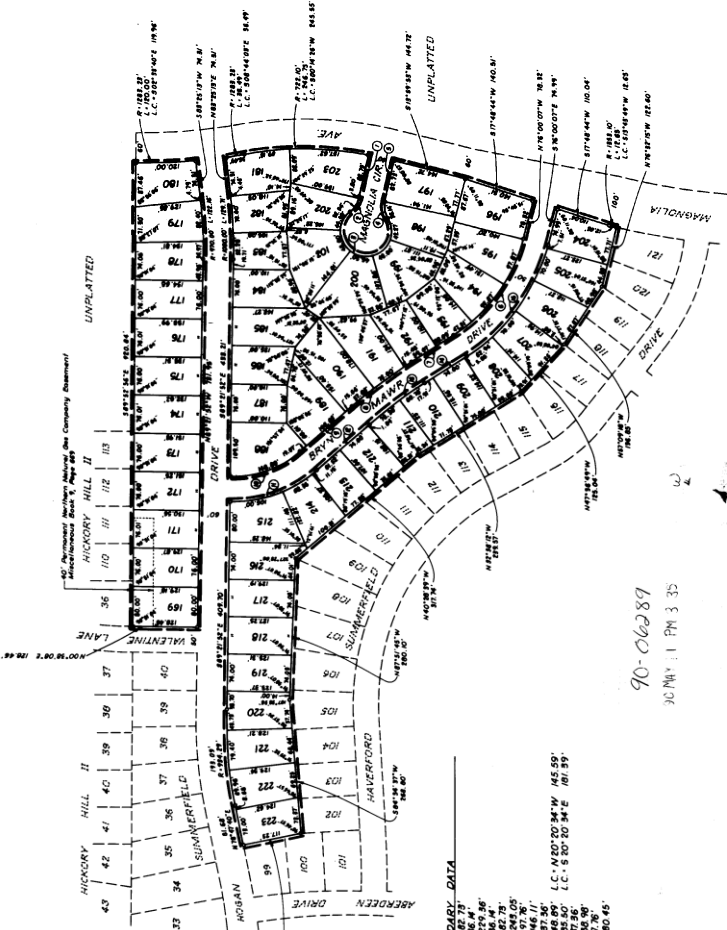


90-06289

SUMMERFIELD REPLAT BEING A REPLAT OF LOTS 35 TO 43 INCLUSIVE, HICKORY HILL II, AN ADDITION IN THE S 1/4 OF THE S 23, T4N, R2E OF THE 6TH PM, SPODY COUNTY, NE.

SECTION 1'S CERTIFICATE I hereby certify that I have made a ground survey of the...

Robert Clark 6-2-87



BOUNDARY DATA table with columns for bearing and distance for various boundary lines.

APPROVAL OF PAVILLION PLANNING COMMISSION This subdivision of Summerfield Replat was approved by the...

APPROVAL OF PAVILLION MUNICIPAL ENGINEER This subdivision of Summerfield Replat was approved by the...

APPROVAL BY PAVILLION CITY COUNCIL This subdivision of Summerfield Replat was approved by the...



APPROVAL OF COUNTY SUPERVISOR This is to certify that this plat of Summerfield Replat, the lot...



COUNTY TREASURER'S CERTIFICATE This is to certify that I find no regular or special taxes due or...

90-06289

5-11-90