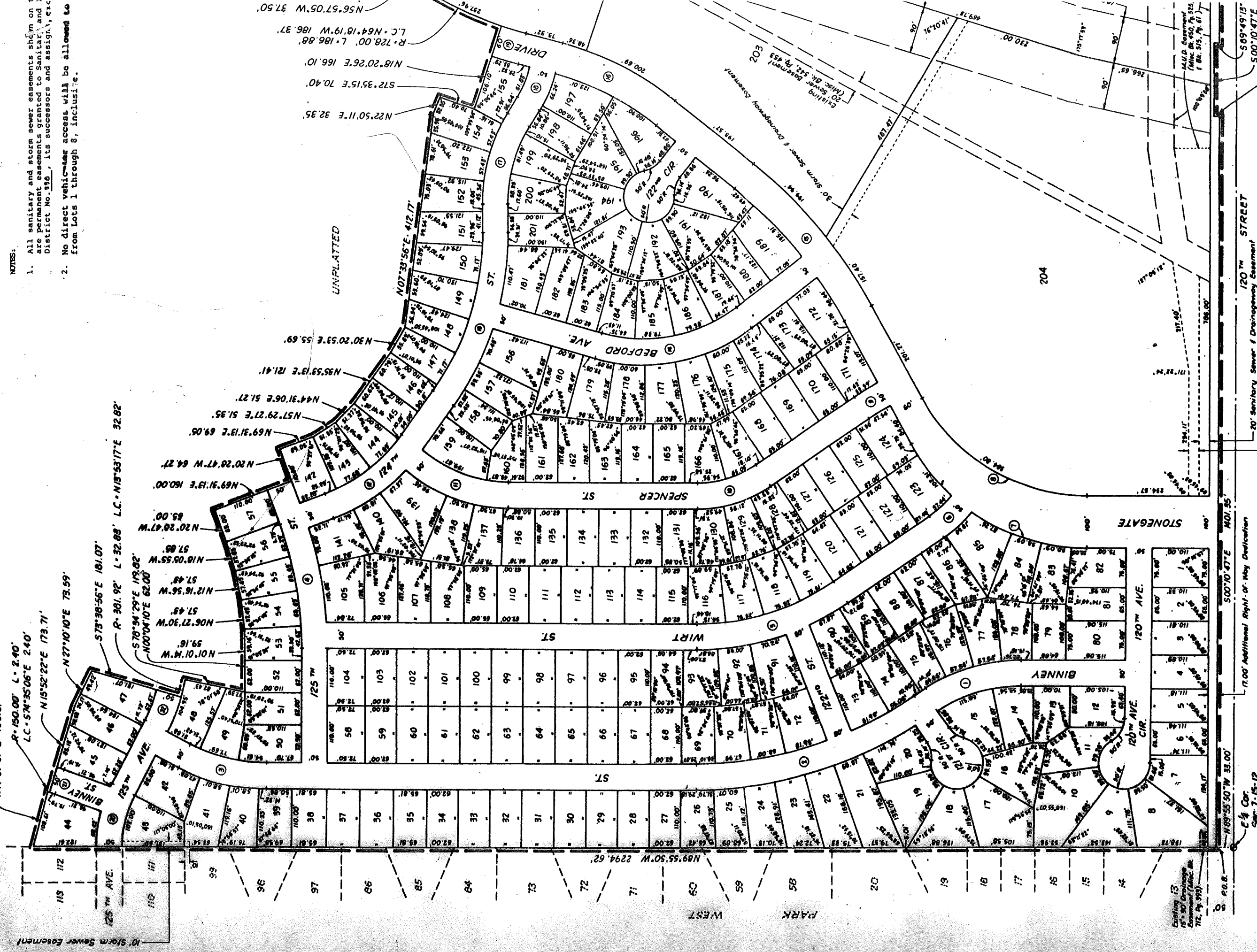


10' Storm Sewer Easement

NOTES:

- All sanitary and storm sewer easements shown on this plat are permanent easements granted to Sanitary and Storm Sewer District No. 916, its successors and assigns, and its successors and assigns.
- No direct vehicular access will be allowed to any lot from Lots 1 through 8, inclusive.



APPROVAL OF OMAHA CITY PLANNING BOARD

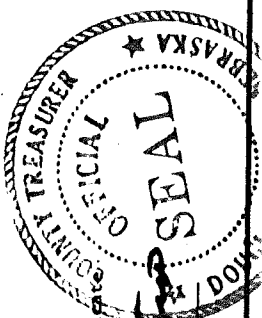
This plat of Stonegate (the lots numbered as shown) was approved by the City Planning Board on this 11th day of March, 1917.

Michael B. DeWitt
 Chairman of City Planning Board

APPROVAL OF CITY ENGINEER OF OMAHA

I hereby approve this plat of Stonegate (the lots numbered as shown) as to the Design Standard this 11th day of March, 1917.

Raymond L. Alaman
 City Engineer



COUNTY TREASURER'S CERTIFICATE

This is to certify that I find no regular or special taxes due or delinquent against the property described in the Surveyor's Certificate and embraced in this plat as shown by the records of this office.

Raymond L. Alaman
 County Treasurer

March 11, 1917
 Date

I hereby certify that adequate provisions have been made for the drainage of this plat in accordance with Chapter 53 of the Omaha Municipal Code.

Raymond L. Alaman
 City Engineer

March 4, 1917
Date

