

SURVEYOR'S CERTIFICATE

I HEREBY CERTIFY THAT I have made a boundary survey of the subdivision herein and that permanent monuments have been set at all angle points on the boundary and that a bond has been posted with the City of Omaha, Nebraska...



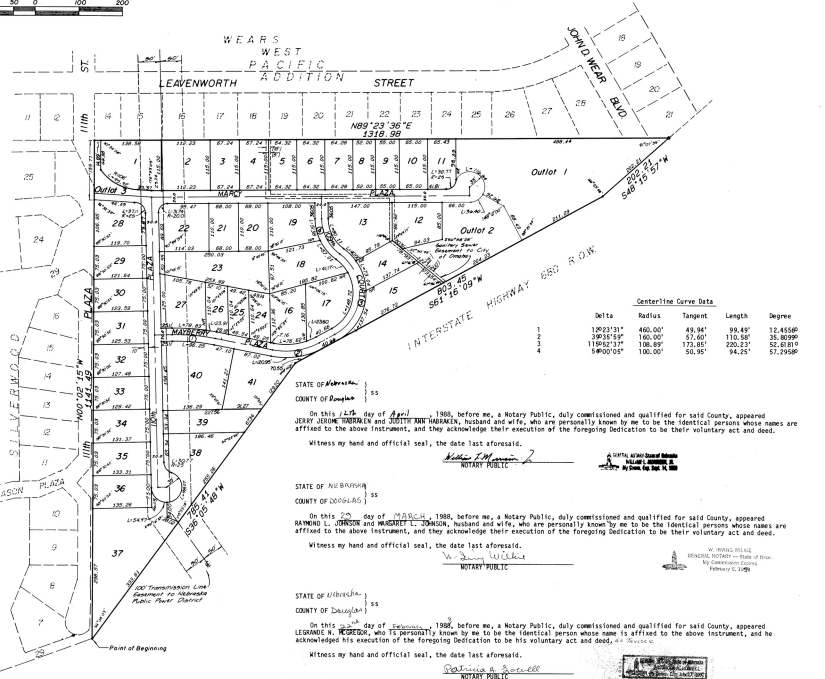
Robert D. Powell, L.S. 4379



100 50 0 100 50 100

SPYGLASS HILL REPLAT

LOTS 1 THROUGH 41, INCLUSIVE AND OUTLOTS 1 THROUGH 3, INCLUSIVE, BEING A REPLATING OF SPYGLASS HILL (LOTS 1 THROUGH 34, INCLUSIVE), A SUBDIVISION, AS SURVEYED, PLATTED, AND RECORDED IN DOUGLAS COUNTY, NEBRASKA (A CLUSTER SUBDIVISION)



STATE OF Nebraska, COUNTY OF Douglas, ss. On this 24th day of April, 1988, before me, a Notary Public, duly commissioned and qualified for said County, appeared...

STATE OF Missouri, COUNTY OF St. Louis, ss. On this 22nd day of January, 1988, before me, a Notary Public, duly commissioned and qualified for said County, appeared...

STATE OF Arkansas, COUNTY OF Emporia, ss. On this 22nd day of June, 1988, before me, a Notary Public, duly commissioned and qualified for said County, appeared...

STATE OF Nebraska, COUNTY OF Douglas, ss. On this 22nd day of April, 1988, before me, a Notary Public, duly commissioned and qualified for said County, appeared...

STATE OF Nebraska, COUNTY OF Douglas, ss. On this 22nd day of March, 1988, before me, a Notary Public, duly commissioned and qualified for said County, appeared...

STATE OF Nebraska, COUNTY OF Douglas, ss. On this 22nd day of March, 1988, before me, a Notary Public, duly commissioned and qualified for said County, appeared...

STATE OF Nebraska, COUNTY OF Douglas, ss. On this 22nd day of March, 1988, before me, a Notary Public, duly commissioned and qualified for said County, appeared...

STATE OF Nebraska, COUNTY OF Douglas, ss. On this 22nd day of March, 1988, before me, a Notary Public, duly commissioned and qualified for said County, appeared...

STATE OF Nebraska, COUNTY OF Douglas, ss. On this 22nd day of March, 1988, before me, a Notary Public, duly commissioned and qualified for said County, appeared...

STATE OF Nebraska, COUNTY OF Douglas, ss. On this 22nd day of March, 1988, before me, a Notary Public, duly commissioned and qualified for said County, appeared...

STATE OF Nebraska, COUNTY OF Douglas, ss. On this 22nd day of March, 1988, before me, a Notary Public, duly commissioned and qualified for said County, appeared...

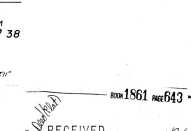
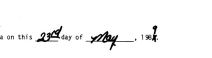
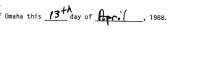
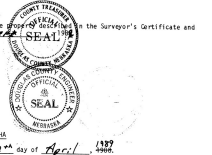
KNOW ALL MEN BY THESE PRESENTS: That WE, SPYGLASS HILL, INC., a Nebraska Corporation, CORN BELT STATE BANK, an Iowa Banking Corporation, WESTWAY PLANNING GROUP, INC., a Nebraska Corporation, MADISON M. EMBROIDER, a single person, JERRY EDGAR HARRISON, a single person, JERRY EDGAR HARRISON, a single person, JERRY EDGAR HARRISON, a single person...

SPYGLASS HILL, INC., a Nebraska Corporation, OWNER. By: [Signature] Notary Public. WESTWAY PLANNING GROUP, INC., a Nebraska Corporation, OWNER. By: [Signature] Notary Public. MADISON M. EMBROIDER, OWNER. By: [Signature] Notary Public. JERRY EDGAR HARRISON, OWNER. By: [Signature] Notary Public.

STATE OF NEBRASKA, COUNTY OF DOUGLAS, ss. On this 22nd day of March, 1988, before me, a Notary Public, duly commissioned and qualified for said County, appeared...

STATE OF NEBRASKA, COUNTY OF DOUGLAS, ss. On this 22nd day of March, 1988, before me, a Notary Public, duly commissioned and qualified for said County, appeared...

STATE OF NEBRASKA, COUNTY OF DOUGLAS, ss. On this 22nd day of March, 1988, before me, a Notary Public, duly commissioned and qualified for said County, appeared...



RECEIVED Nov 2 10 04 AM '88

SPYGLASS HILL REPLAT

FINAL PLAT

lamp, ryerson & associates, inc. 18727 FAIRMOUNT AVENUE OMAHA, NEBRASKA 68108

DESIGNER: [Signature]

REVISIONS: [List of revisions]

JOB NUMBER: 88-0348 DATE: 3-16-88 SHEET: 1 of 1