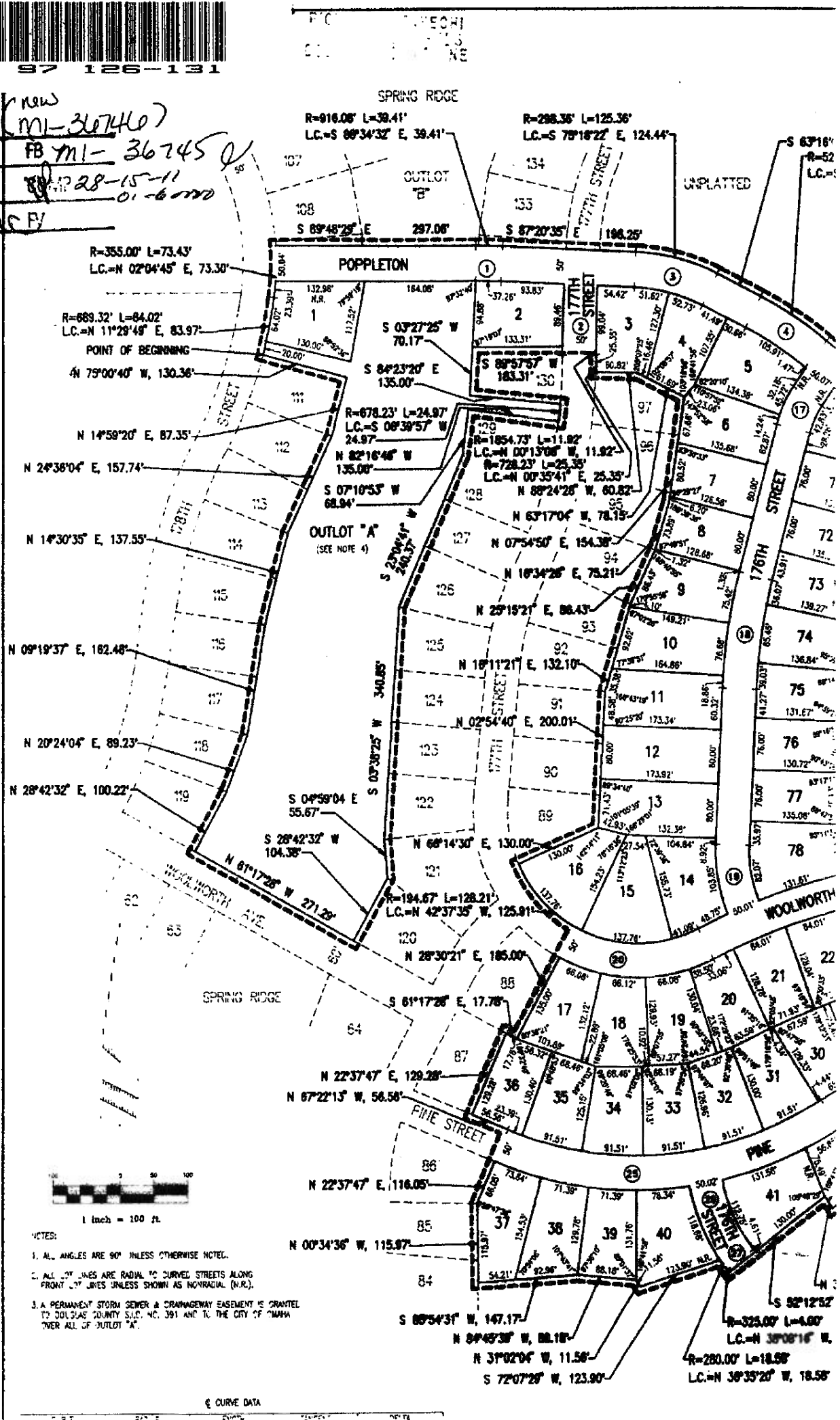
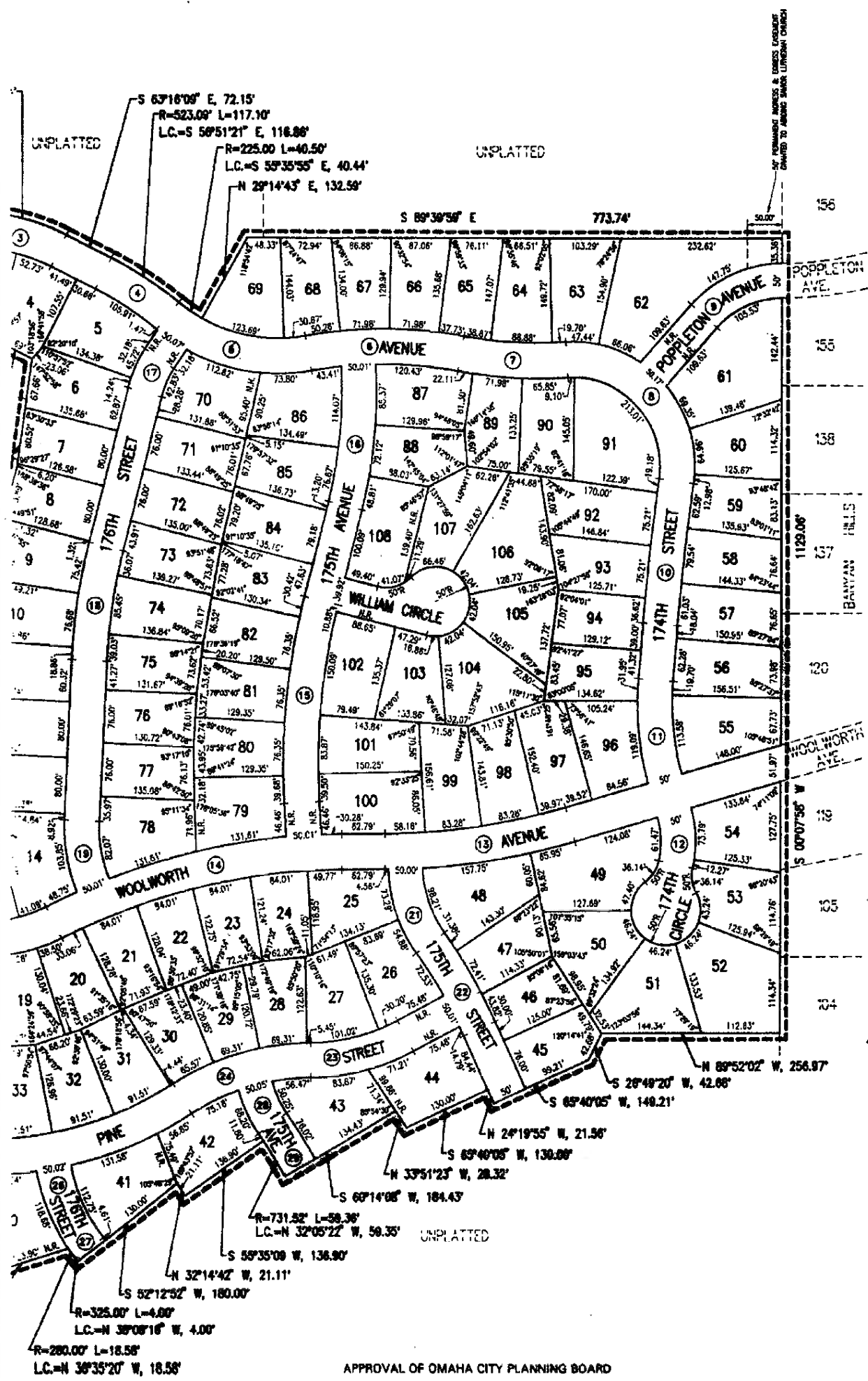




Jun. 16 3:45 PM '97.
JUN 16 3 45 PM '97

72803 (new MI-36746)
67.501 FB MI-36745
CWA 28-15-11
01-6-1770
SCANDY





Know all men by these presents that the property described in the said subdivision to be hereafter subdivided and we do hereby ratify and grant the easements as the Omaha Public Power has been granted a franchise subdivided, their successors, poles, wires, cables, cables for the carrying of cable television system, (5') wide strip of land adjacent to the strip of land abutting the wide strip of land abutting lots is herein defined in addition. Said sixteen-foot strip when the adjacent assigns, to erect, install related facilities, and to through, under and across. No permanent buildings the same may be used thereon or later interfere with.

In witness whereof, we
 SPRING RIDGE CORP
 BY: *Timothy*
 AND CHIEF OPERATING OFFICER

ACKNOWLEDGEMENT
 STATE OF NEBRASKA
 COUNTY OF DOUGLAS
 On this 23 day of SE and qualified in and for Chief Operating Officer to be the identical person acknowledged the execution of said corporation.

WITNESS my hand and
Kathleen
 Notary Public

OMAHA CITY COUNCIL
 This plat of SPRING RIDGE Replat City Council of Omaha

MAYOR
 ATTEST *Dorcas*
 CITY CLERK

APPROVAL OF OMAHA CITY PLANNING BOARD
 This plat of SPRING RIDGE REPLAT (Lots numbered as shown) was approved by the City Planning Board on this 2nd day of October 1996.

SPRING RIDGE REPLAT 1

LOTS 1 THRU 108 & OUTLOT "A"

BEING A REPLAT OF ALL OF LOTS 110 AND 131; PART OF LOTS 109, 132 AND OUTLOT "B"; AND PART OF THE RIGHT-OF-WAY OF 177TH STREET, ALL LOCATED IN SPRING RIDGE, A SUBDIVISION IN THE NW 1/4 OF SECTION 28; AND ALSO BEING A PLATTING OF PART OF SAID NW 1/4 OF SECTION 28; ALL IN TOWNSHIP 15 NORTH, RANGE 11 EAST OF THE 6TH P.M., DOUGLAS COUNTY, NEBRASKA.

PART OF:
NW 1/4, NW 1/4,
NE 1/4, NW 1/4,
SE 1/4, NW 1/4,
SW 1/4, NW 1/4

DEDICATION

By these presents that we, Spring Ridge Corporation, Owner, of the subdivision described in the Certification of Survey and embraced within the plat has caused the subdivision to be subdivided into lots and streets to be numbered and named as shown, said subdivision to be hereafter known as SPRING RIDGE REPLAT 1 (lots numbered as shown), to be dedicated to the public use of the streets, avenues, and circles, and we do hereby certify and approve of the disposition of our property, and we do hereby dedicate to the public for public use the streets, avenues, and circles, and we do hereby grant a perpetual easement to the City of Omaha, a subdivision located in the NW 1/4 of Section 28; and also part of Lots 109, 132 and Outlot "B", said Spring Ridge; and also part of the 177th Street right-of-way located in said Spring Ridge; and also being a platting of part of said NW 1/4 of Section 28; all located in Township 15 North, Range 11 East of the 6th P.M., Douglas County, Nebraska, more particularly described as follows:

SURVEYOR'S CERTIFICATE

I hereby certify that I have made a ground survey of the subdivision described herein and that temporary monuments have been placed on the boundary of the subdivision within plat and that a bond has been furnished to the City of Omaha to ensure the placing of permanent monuments and stakes at all corners of all lots, streets, avenues, and circles, and the ends of all curves in Spring Ridge Replat 1 (lots numbered as shown) being a replat of all of Lots 110 and 131, Spring Ridge, a subdivision located in the NW 1/4 of Section 28; and also part of Lots 109, 132 and Outlot "B", said Spring Ridge; and also part of the 177th Street right-of-way located in said Spring Ridge; and also being a platting of part of said NW 1/4 of Section 28; all located in Township 15 North, Range 11 East of the 6th P.M., Douglas County, Nebraska, more particularly described as follows:

Beginning at the Northwest corner of Lot 111, said Spring Ridge, said point also being on the East right-of-way line of 178th Street; thence Northerly along said East right-of-way line of 178th Street, on a curve to the left with a radius of 659.32 feet, a distance of 84.02 feet, said curve having a long chord which bears N11°29'49"E, a distance of 83.97 feet; thence Northerly along said East right-of-way line of 178th Street, on a curve to the left with a radius of 355.00 feet, a distance of 73.43 feet, said curve having a long chord which bears N02°04'45"E, a distance of 73.30 feet; thence S89°48'29"E, a distance of 297.06 feet; thence Easterly on a curve to the right with a radius of 916.08 feet, a distance of 39.41 feet, said curve having a long chord which bears S88°34'32"E, a distance of 39.41 feet; thence S87°20'35"E, a distance of 198.25 feet; thence Southeasterly on a curve to the right with a radius of 296.36 feet, a distance of 125.36 feet, said curve having a long chord which bears S75°18'22"E, a distance of 124.44 feet; thence S63°16'09"E, a distance of 72.15 feet; thence Southeasterly on a curve to the right with a radius of 523.09 feet, a distance of 117.10 feet, said curve having a long chord which bears S86°51'21"E, a distance of 116.88 feet; thence Southeasterly on a curve to the left with a radius of 225.00 feet, a distance of 40.50 feet, said curve having a long chord which bears S65°36'55"E, a distance of 40.44 feet; thence N29°14'49"E, a distance of 132.59 feet; thence S89°38'59"E, a distance of 773.74 feet to a point on the East line of said NW 1/4 of Section 28, said point also being on the West line of Banyan Hills, a subdivision located in the NE 1/4 of said Section 28; thence S00°07'58"W along said East line of the NW 1/4 of Section 28, said line also being said West line of Banyan Hills, a distance of 1129.08 feet; thence N88°52'02"W, a distance of 256.97 feet; thence S26°49'20"W, a distance of 42.68 feet; thence S65°40'05"W, a distance of 149.21 feet; thence N24°19'55"W, a distance of 21.56 feet; thence S65°40'05"W, a distance of 130.00 feet; thence N33°51'23"W, a distance of 28.32 feet; thence S60°14'08"W, a distance of 184.43 feet; thence Northwesterly on a curve to the left with a radius of 731.52 feet, a distance of 59.36 feet, said curve having a long chord which bears N32°05'22"W, a distance of 59.35 feet; thence S55°35'09"W, a distance of 136.90 feet; thence N32°14'42"W, a distance of 21.11 feet; thence S52°12'52"W, a distance of 180.00 feet; thence Northwesterly on a curve to the left with a radius of 325.00 feet, a distance of 4.00 feet, said curve having a long chord which bears N38°08'16"W, a distance of 4.00 feet; thence Northwesterly on a curve to the right with a radius of 280.00 feet, a distance of 18.58 feet, said curve having a long chord which bears N36°35'20"W, a distance of 18.58 feet; thence S72°07'29"W, a distance of 123.90 feet; thence N31°02'04"W, a distance of 11.56 feet; thence N84°45'39"W, a distance of 88.18 feet; thence S85°54'31"W, a distance of 147.17 feet to a point on the Easterly line of Lot 84, said Spring Ridge; thence along the Easterly line of said Spring Ridge on the following described courses; thence N00°34'38"W, a distance of 115.97 feet; thence N22°37'47"E, a distance of 116.05 feet; thence N67°22'13"W, a distance of 56.56 feet; thence N22°37'47"E, a distance of 129.28 feet; thence S61°17'28"E, a distance of 17.78 feet; thence N28°30'21"E, a distance of 185.00 feet; thence Northwesterly on a curve to the right with a radius of 194.67 feet, a distance of 128.21 feet, said curve having a long chord which bears N42°37'38"W, a distance of 125.91 feet; thence N66°14'30"E, a distance of 130.00 feet; thence N02°54'40"E, a distance of 200.01 feet; thence N16°11'21"E, a distance of 132.10 feet; thence N25°15'21"E, a distance of 86.43 feet; thence N16°34'26"E, a distance of 75.21 feet; thence N07°54'50"E, a distance of 154.38 feet; thence N63°17'04"W, a distance of 78.15 feet; thence N88°24'28"W, a distance of 66.82 feet to the Northwest corner of Lot 97, said Spring Ridge, said point also being on the East right-of-way line of said 177th Street; thence Northerly along said East right-of-way line of 177th Street, on a curve to the left with a radius of 728.23 feet, a distance of 25.35 feet, said curve having a long chord which bears N00°38'41"E, a distance of 25.35 feet; thence Northerly along said East right-of-way line of 177th Street, on a curve to the right with a radius of 1654.73 feet, a distance of 11.92 feet, said curve having a long chord which bears N00°13'06"W, a distance of 11.92 feet; thence S88°57'57"W along the North line of Lot 130, said Spring Ridge, and the Easterly extension thereof, a distance of 183.31 feet to the Northwest corner of said Lot 130, Spring Ridge, said point also being on the Easterly line of said Outlot "B", Spring Ridge, thence along said Easterly line of Outlot "B", Spring Ridge, on the following described courses; thence S03°27'25"W, a distance of 70.17 feet; thence S84°23'20"E, a distance of 135.00 feet; thence Southerly on a curve to the right with a radius of 678.23 feet, a distance of 24.97 feet, said curve having a long chord which bears S06°39'57"W, a distance of 24.97 feet; thence N82°16'46"W, a distance of 135.00 feet; thence S07°10'53"W, a distance of 68.94 feet; thence S23°04'41"W, a distance of 240.37 feet; thence S03°38'25"W, a distance of 340.85 feet; thence S04°59'04"E, a distance of 65.67 feet; thence S28°42'32"W, a distance of 104.38 feet to the Southeast corner of said Outlot "B", Spring Ridge, said point also being the Southwest corner of Lot 120, said Spring Ridge, said point also being on the Northerly right-of-way line of Woolworth Avenue; thence N61°17'28"W along said Northerly right-of-way line of Woolworth Avenue, a distance of 271.29 feet to the Southwest corner of said Outlot "B", Spring Ridge, said point also being the Southeast corner of Lot 119, said Spring Ridge;

In proof, we do set our hands this 23 day of Sept 1996.

BY: **SPRING RIDGE CORPORATION** formerly known as **SPRING RIDGE LTD. PARTNERSHIP**

Timothy J. McReynolds
TIMOTHY J. McREYNOLDS, PRESIDENT
CHIEF OPERATING OFFICER

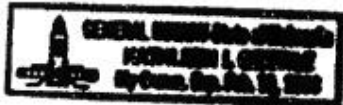
TESTIMONY OF NOTARY

(NEBRASKA)
IN AND FOR THE COUNTY OF DOUGLAS

On this 23 day of Sept 1996, before me a Notary Public, duly commissioned and for said County, appeared Timothy J. McReynolds, President and Chief Operating Officer of Spring Ridge Corporation, who is personally known by me and whose official person whose name is affixed to the dedication on this plat, and the execution thereof to be his voluntary act and deed as such officer.

Witness my hand and Notarial Seal the day and year last above written.

Leslie Hentz Seal



COUNCIL ACCEPTANCE

SPRING RIDGE REPLAT 1 (Lots numbered as shown) was approved by the City of Omaha on this 5 day of September, 1996.

Hal Daub
CLERK
[Signature]
PRESIDENT OF COUNCIL



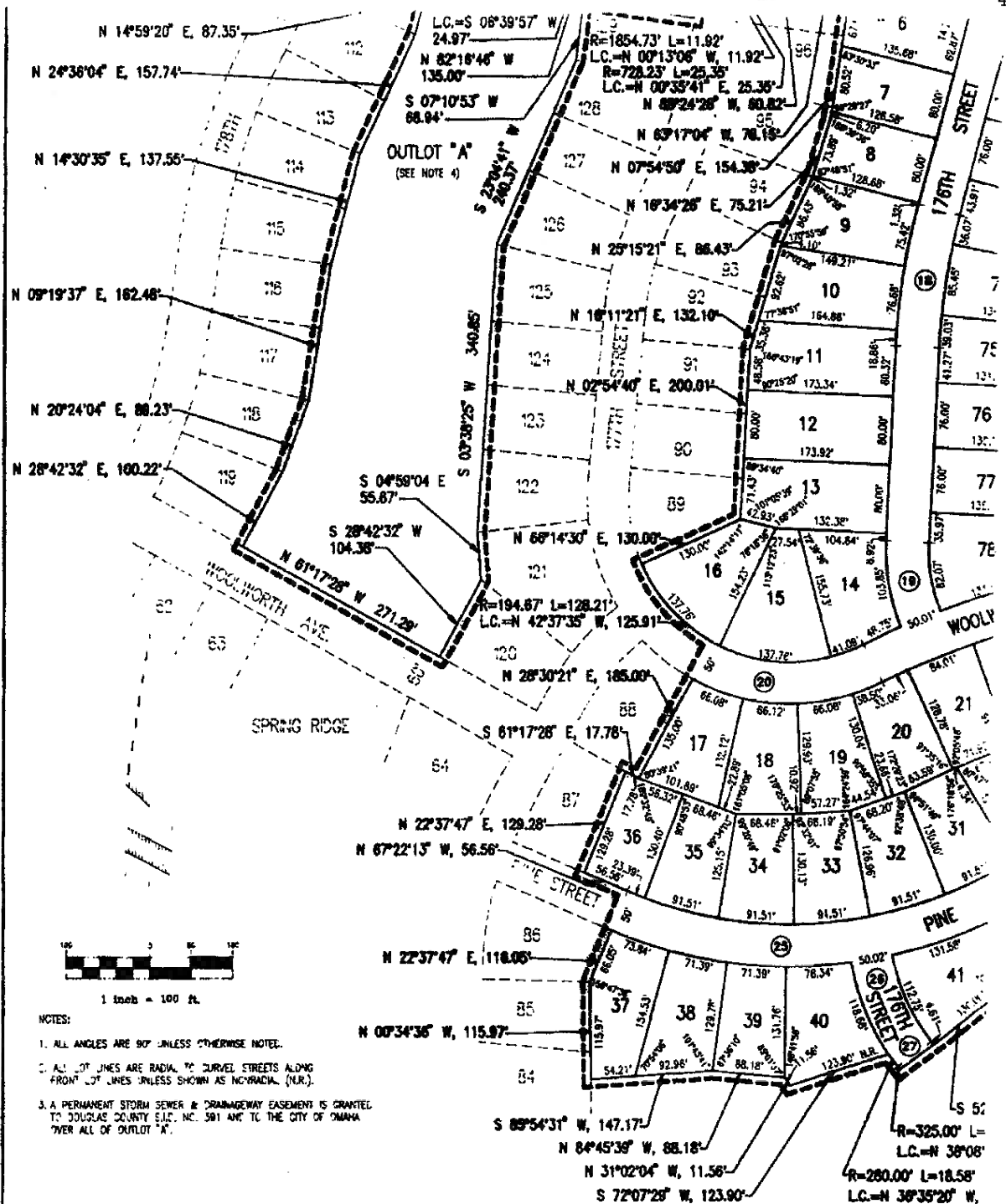
E&A CONSULTING GROUP

12001 "O" STREET • OMAHA, NE 68137 • (402) 885-4700 • FAX (402) 894-3590

SPRING RIDGE REPLAT 1

OMAHA, NEBRASKA

PLAT



- NOTES:
1. ALL ANGLES ARE 90° UNLESS OTHERWISE NOTED.
 2. ALL LOT LINES ARE RADIAL TO CURVED STREETS ALONG FRONT LOT LINES UNLESS SHOWN AS NONRADIAL (N.R.).
 3. A PERMANENT STORM SEWER & DRAINAGEWAY EASEMENT IS GRANTED TO DOUGLAS COUNTY S.I.C. NO. 581 AND TO THE CITY OF OMAHA OVER ALL OF OUTLOT 'A'.

☺ CURVE DATA

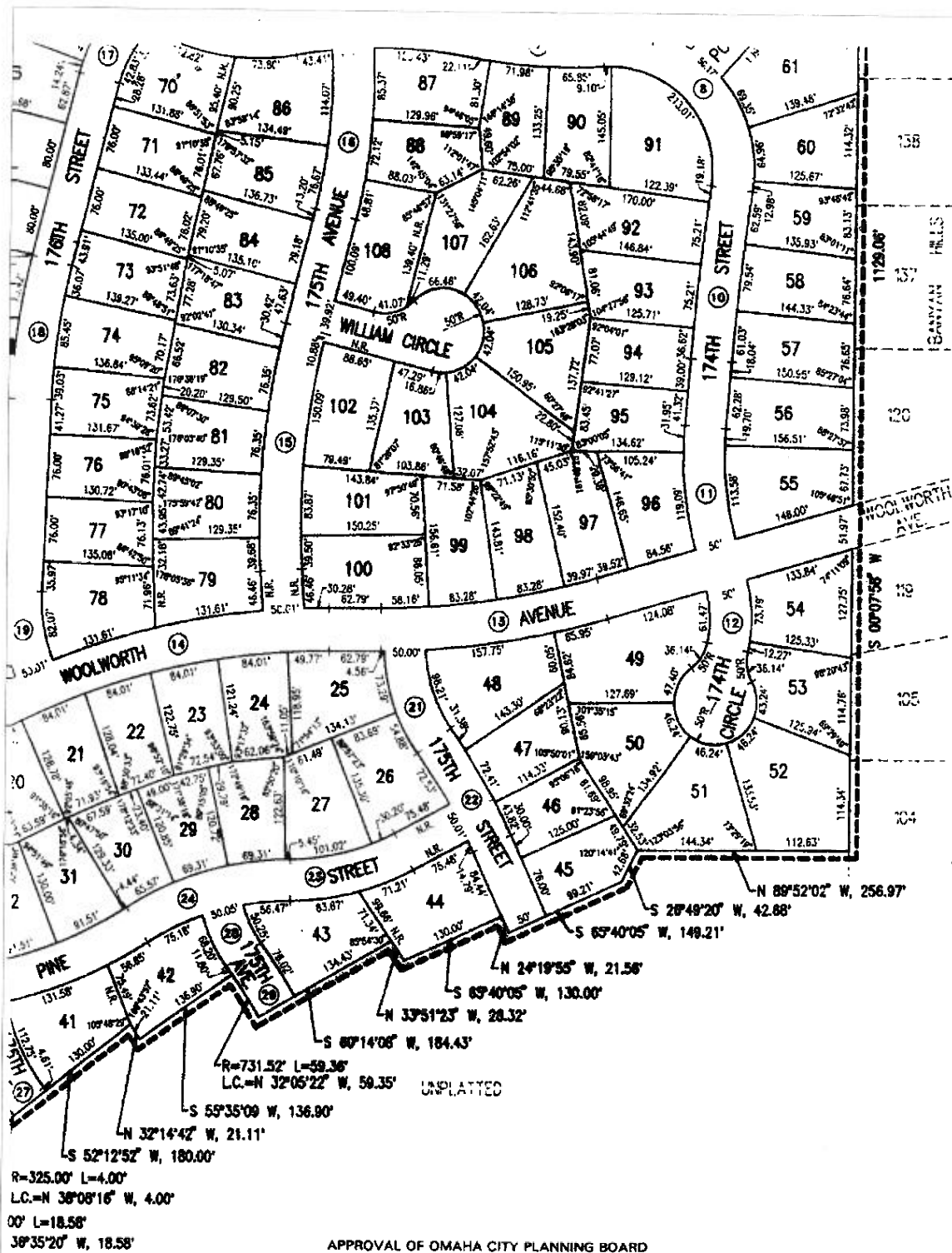
CURVE	RADIUS	LENGTH	TANGENT	DELTA
1	851.00'	38.34'	18.17'	02°27'54"
2	1878.73'	88.29'	44.15'	02°41'28"
3	273.36'	114.86'	58.28'	2°04'28"
4	668.00'	111.51'	55.99'	12°49'37"
5	250.00'	218.51'	115.57'	07°37'15"
6	615.00'	222.91'	112.00'	20°44'03"
7	615.00'	153.70'	77.25'	14°18'08"
8	150.00'	266.54'	184.61'	101°48'37"
9	150.00'	128.64'	67.37'	48°22'25"
10	3337.83'	204.69'	102.38'	03°30'50"
11	400.00'	142.18'	71.64'	20°21'47"
12	150.00'	75.77'	37.65'	28°10'41"
13	1000.00'	271.48'	136.58'	19°37'17"
14	918.90'	430.56'	218.30'	28°48'03"
15	833.45'	291.38'	146.87'	17°37'01"
16	638.18'	198.52'	100.07'	17°48'28"
17	150.00'	51.38'	25.85'	19°37'50"
18	297.00'	185.75'	85.18'	11°54'57"
19	213.36'	82.96'	47.23'	24°37'40"
20	218.87'	212.58'	115.45'	09°27'00"
21	188.90'	113.19'	58.35'	34°18'46"
22	683.11'	142.47'	71.49'	1°46'38"
23	300.00'	143.15'	72.96'	27°28'22"
24	350.00'	186.67'	108.47'	32°01'54"
25	638.00'	508.38'	276.22'	09°04'00"
26	265.00'	125.01'	63.79'	28°05'13"
27	500.00'	4.38'	2.15'	00°42'17"
28	185.00'	98.23'	49.84'	28°33'58"
29	728.58'	75.58'	36.83'	05°34'25"

COUNTY TREASURER'S CERTIFICATE

This is to certify that I find no regular or special taxes due on property described in the Surveyor's Certificate and embrace by the records of this office.

[Signature]
 COUNTY TREASURER
JULIE M. HANEY
 DATE 11-22-91
 6-91

IMPRINTED REGISTER



cables for the carrying and transmi
for the transmission of signals an
cable television system, and the rec
(5') wide strip of land abutting all fr
strip of land abutting the rear bound
wide strip of land abutting the rear bou
lots is herein defined as those lots
in addition. Said sixteen-foot (16') wi
strip when the adjacent land is sur
a perpetual easement to Metrop
assigns, to erect, install, operate, m
related facilities, and to extend the
through, under and across a five-fo
No permanent buildings or retaining
the same may be used for gardens,
then or later interfere with the afo

In witness whereof, we do set our

SPRING RIDGE CORPORATION

Timothy J. Reynolds
BY: TIMOTHY J. REYNOLDS
AND CHIEF OPERATING OFFICER

ACKNOWLEDGEMENT OF NOTAR

STATE OF NEBRASKA
ISS
COUNTY OF DOUGLAS)

On this 23 day of Sept, 19
and qualified in and for said County
Chief Operating Officer of Spring Ri
to be the identical person whose
acknowledged the execution thereo
of said corporation.

WITNESS my hand and Notarial S

Kathleen A. [Signature]
Notary Public

NOTAR
REGIS

OMAHA CITY COUNCIL ACCEPTA

This plat of SPRING RIDGE REPLAT
City Council of Omaha on this 2

[Signature]
MAYOR

ATTEST *[Signature]*
CITY CLERK

IMPRIN
REGIST

APPROVAL OF CITY ENGINEER OF

I hereby approve this plat of SPRIN
to the Design Standards this 9

[Signature]
CITY ENGINEER

I hereby certify that adequate provis
53 of the Omaha Municipal Code.

[Signature]
CITY ENGINEER

APPROVAL OF OMAHA CITY PLANNING BOARD

This plat of SPRING RIDGE REPLAT 4 (lots numbered as shown) was approved by the
City Planning Board on this 2nd day of October, 1996.

Kathleen Jeppies
CHAIRMAN OF CITY PLANNING BOARD

REVIEW OF DOUGLAS COUNTY ENGINEER

This plat of SPRING RIDGE REPLAT 4 (lots numbered as shown) was reviewed by
the official of the Douglas County Engineer on this 25 day of Sept, 1996.



IMPRINTED SEAL
REGISTER OF DEEDS

Taxes due or delinquent on this plat
and embraced in

11-22-96
DATE

9-9

IMPRINTED SEAL
REGISTER OF DEEDS

transmission of signals and sounds of all kinds including signals provided by a communication system, and the reception on, over, through, under and across a five-foot strip of land abutting all front and side boundary lot lines; an eight-foot (8') wide strip of land abutting the rear boundary lines of all interior lots; and a sixteen-foot (16') wide strip of land abutting the rear boundary lines of all exterior lots. The term exterior lot is defined as those lots forming the outer perimeter of the above-described plat. The sixteen-foot (16') wide easement will be reduced to an eight-foot (8') wide easement to Metropolitan Utilities District of Omaha, their successors and assigns, and to extend thereon pipes for the transmission of gas and water on, over, under and across a five-foot (5') wide strip of land abutting all cul-de-sac streets. No buildings or retaining walls shall be placed in the said easement ways, but they may be used for gardens, shrubs, landscaping and other purposes that do not interfere with the aforesaid uses or rights herein granted.

whereof, we do set our hands this 23 day of Sept, 1996.

SPRING RIDGE CORPORATION formerly known as SPRING RIDGE LTD. PARTNERSHIP

Timothy J. McReynolds
TIMOTHY J. McREYNOLDS, PRESIDENT
CHIEF OPERATING OFFICER

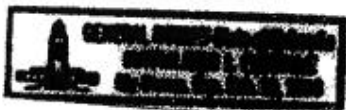
STATEMENT OF NOTARY

NEBRASKA)
COUNTY OF DOUGLAS)

On this day of Sept, 1996, before me a Notary Public, duly commissioned in and for said County, appeared Timothy J. McReynolds, President and Chief Operating Officer of Spring Ridge Corporation, who is personally known by me and is a legal person whose name is affixed to the dedication on this plat, and he acknowledged the execution thereof to be his voluntary act and deed as such officer of said corporation.

At my hand and Notarial Seal the day and year last above written.

David L. Hinkle Seal
Notary Public



NOTARIAL SEAL AFFIXED
REGISTER OF DEEDS

CITY COUNCIL ACCEPTANCE

SPRING RIDGE REPLAT 1 (Lots numbered as shown) was approved by the City Council of Omaha on this 23 day of September, 1996.

Hal Daeb
Robert J. Neumann
CITY CLERK PRESIDENT OF COUNCIL

IMPRINTED SEAL
REGISTER OF DEEDS

CITY ENGINEER OF OMAHA

I hereby approve this plat of SPRING RIDGE REPLAT 1 (Lots numbered as shown) as conforming to Standards this 7th day of October, 1996.

R. Neumann
CITY ENGINEER

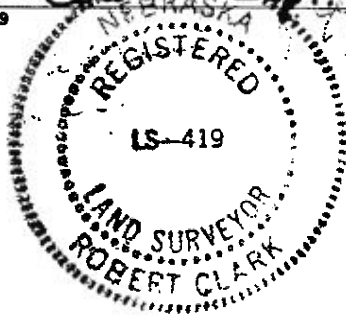
I certify that adequate provisions have been made for compliance with Chapter 21-100 of the Omaha Municipal Code.

R. Neumann 11-25-96
CITY ENGINEER Date

Beginning at the Northwest corner of Lot 111, said Spring Ridge, said point also being on the East right-of-way line of 178th Street; thence Northerly along said East right-of-way line of 178th Street, on a curve to the left with a radius of 689.32 feet, a distance of 84.02 feet, said curve having a long chord which bears N11°29'49"E, a distance of 83.97 feet; thence Northerly along said East right-of-way line of 178th Street, on a curve to the left with a radius of 355.00 feet, a distance of 73.43 feet, said curve having a long chord which bears N02°04'45"E, a distance of 73.30 feet; thence S88°48'29"E, a distance of 297.06 feet; thence Easterly on a curve to the right with a radius of 916.68 feet, a distance of 39.41 feet, said curve having a long chord which bears S88°34'32"E, a distance of 39.41 feet; thence S87°20'35"E, a distance of 198.25 feet; thence Southeastery on a curve to the right with a radius of 298.36 feet, a distance of 125.36 feet, said curve having a long chord which bears S78°18'22"E, a distance of 124.44 feet; thence S63°16'09"E, a distance of 72.15 feet; thence Southeastery on a curve to the right with a radius of 523.09 feet, a distance of 117.10 feet, said curve having a long chord which bears S58°51'21"E, a distance of 116.86 feet; thence Southeastery on a curve to the left with a radius of 225.00 feet, a distance of 40.50 feet, said curve having a long chord which bears S55°35'55"E, a distance of 40.44 feet; thence N29°14'43"E, a distance of 132.59 feet; thence S89°39'59"E, a distance of 773.74 feet to a point on the East line of said NW 1/4 of Section 28, said point also being on the West line of Banyan Hills, a subdivision located in the NE 1/4 of said Section 28; thence S00°07'58"W along said East line of the NW 1/4 of Section 28, said line also being said West line of Banyan Hills, a distance of 1129.06 feet; thence N89°52'02"W, a distance of 256.97 feet; thence S26°49'20"W, a distance of 42.68 feet; thence S65°40'05"W, a distance of 148.21 feet; thence N24°19'56"W, a distance of 21.56 feet; thence S65°40'05"W, a distance of 130.00 feet; thence N33°51'23"W, a distance 28.32 feet; thence S60°14'08"W, a distance of 184.43 feet; thence Northwesterly on a curve to the left with a radius of 731.52 feet, a distance of 59.36 feet, said curve having a long chord which bears N32°05'22"W, a distance of 59.35 feet; thence S55°35'09"W, a distance of 136.90 feet; thence N32°14'42"W, a distance of 21.11 feet; thence S62°12'52"W, a distance of 180.00 feet; thence Northwesterly on a curve to the left with a radius of 326.00 feet, a distance of 4.00 feet, said curve having a long chord which bears N38°08'16"W, a distance of 4.00 feet; thence Northwesterly on a curve to the right with a radius of 280.00 feet, a distance of 18.58 feet, said curve having a long chord which bears N36°35'20"W, a distance of 18.58 feet; thence S72°07'29"W, a distance of 123.90 feet; thence N31°02'04"W, a distance of 11.58 feet; thence N84°45'39"W, a distance of 88.18 feet; thence S85°54'31"W, a distance of 147.17 feet to a point on the Easterly line of Lot 84, said Spring Ridge; thence along the Easterly line of said Spring Ridge on the following described courses; thence N00°34'36"W, a distance of 115.97 feet; thence N22°37'47"E, a distance of 116.05 feet; thence N67°22'13"W, a distance of 56.56 feet; thence N22°37'47"E, a distance of 129.28 feet; thence S61°17'28"E, a distance of 17.78 feet; thence N26°30'21"E, a distance of 185.00 feet; thence Northwesterly on a curve to the right with a radius of 194.67 feet, a distance of 126.21 feet, said curve having a long chord which bears N42°37'35"W, a distance of 125.91 feet; thence N66°14'30"E, a distance of 130.00 feet; thence N02°54'40"E, a distance of 200.01 feet; thence N16°11'21"E, a distance of 132.10 feet; thence N25°15'21"E, a distance of 86.43 feet; thence N16°34'26"E, a distance of 75.21 feet; thence N07°54'50"E, a distance of 154.38 feet; thence N63°17'04"W, a distance of 78.15 feet; thence N88°24'28"W, a distance of 60.82 feet to the Northwest corner of Lot 97, said Spring Ridge, said point also being on the East right-of-way line of said 177th Street; thence Northerly along said East right-of-way line of 177th Street, on a curve to the left with a radius of 728.23 feet, a distance of 25.35 feet, said curve having a long chord which bears N00°35'41"E, a distance of 25.35 feet; thence Northerly along said East right-of-way line of 177th Street, on a curve to the right with a radius of 1854.73 feet, a distance of 11.92 feet, said curve having a long chord which bears N00°13'06"W, a distance of 11.92 feet; thence S89°57'57"W along the North line of Lot 130, said Spring Ridge, and the Easterly extension thereof, a distance of 183.31 feet to the Northwest corner of said Lot 130, Spring Ridge, said point also being on the Easterly line of said Outlot "B", Spring Ridge, thence along said Easterly line of Outlot "B", Spring Ridge, on the following described courses; thence S03°27'25"W, a distance of 70.17 feet; thence S84°23'20"E, a distance of 135.00 feet; thence Southerly on a curve to the right with a radius of 676.23 feet, a distance of 24.97 feet, said curve having a long chord which bears S06°39'57"W, a distance of 24.97 feet; thence N82°16'46"W, a distance of 135.00 feet; thence S07°10'53"W, a distance of 68.94 feet; thence S23°04'41"W, a distance of 240.37 feet; thence S03°38'25"W, a distance of 340.85 feet; thence S04°59'04"E, a distance of 58.67 feet; thence S28°42'32"W, a distance of 104.38 feet to the Southeast corner of said Outlot "B", Spring Ridge, said point also being the Southwest corner of Lot 120, said Spring Ridge, said point also being on the Northerly right-of-way line of Woolworth Avenue; thence N61°17'28"W along said Northerly right-of-way line of Woolworth Avenue, a distance of 271.29 feet to the Southwest corner of said Outlot "B", Spring Ridge, said point also being the Southeast corner of Lot 119, said Spring Ridge; thence along the Westerly line of said Outlot "B", Spring Ridge, on the following described courses; thence N28°42'32"E, a distance of 100.22 feet; thence N20°24'04"E, a distance of 89.23 feet; thence N09°19'37"E, a distance of 162.48 feet; thence N14°30'35"E, a distance of 137.55 feet; thence N24°38'04"E, a distance of 157.74 feet; thence N14°59'20"E, a distance of 87.35 feet; thence N76°00'40"W, a distance of 130.36 feet to the point of beginning.

Said tract of land contains an area of 42.101 acres, more or less.

Robert Clark Sept. 25, 1996
Robert Clark, LS-419 Date



IMPRINTED SEAL
REGISTER OF DEEDS

E & CON

12001 'G' STREET • OMAHA, NE

SPRING RIDGE REPLAT 1

OMAHA, NEBRASKA

FINAL PLAT

DATE	9-26-96
PREPARED BY	RLS
CHECKED BY	TRH
SCALE	1" = 100'
SHEET	1 of 1