

SPRING GREEN  
( ACLUSTER SUBDIVISION)  
LOTS 1 thru 13, INCLUSIVE

BEING A PLATTING OF PART OF THE NE $\frac{1}{4}$  OF SECTION 22, T 15N, R12E OF THE  
6th P.M., DOUGLAS COUNTY, NEBRASKA. 1983

DEED	BOOK 88	PAGE 291
MORTGAGE	BOOK 88	PAGE 291
PLAT	BOOK 1712	PAGE 150
CABINET	3- 14	
ROLODEX		

**PLAT IN EACH OF BOOK**

54 ENTERED IN NUMERICAL INDEX AND RECORDED IN THE REGISTER OF DEEDS OFFICE IN DOUGLAS COUNTY, NEBRASKA  
DAY OF August 19 83 AT 11:54 A M. C. HAROLD OSTLER, REGISTER OF DEEDS 1220

# SPRING GREEN

(A CLUSTER SUBDIVISION)  
LOTS 1 THRU 13, INCLUSIVE

BEING A PLATTING OF PART OF THE NE 1/4 OF SECTION 22,  
T15N, R12E OF THE 6TH PM., DOUGLAS COUNTY, NEBRASKA.



APRIL 27, 1983

*James D. Warner*  
REGISTERED LAND SURVEYOR

KNOW ALL MEN BY THESE PRESENTS: THAT WE, CHERRY TREE CORPORATION (A NEBRASKA CORPORATION), BEING THE OWNERS AND U.S. NATIONAL BANK, RAYMOND C. MATSON AND MILDRED E. MATSON, HUSBAND AND WIFE, BEING THE MORTGAGE HOLDERS OF THE LAND DESCRIBED WITHIN THE SURVEYOR'S CERTIFICATE AND EMBRACED WITHIN THIS PLAT, HAVE CAUSED SAID LAND TO BE SUBDIVIDED INTO LOTS TO BE NUMBERED AS SHOWN SAID SUBDIVISION TO BE HEREAFTER KNOWN AS SPRING GREEN, AND WE DO HEREBY GRANT, RATIFY AND APPROVE OF THE DISPOSITION OF OUR PROPERTY AS SHOWN ON THIS PLAT AND WE DO FURTHER GRANT PERPETUAL EASEMENTS TO THE OMAHA PUBLIC POWER DISTRICT, NORTH-WESTERN BELL TELEPHONE COMPANY AND ANY COMPANY WHICH HAS BEEN GRANTED A FRANCHISE TO PROVIDE A CABLE TELEVISION SYSTEM IN THE AREA TO BE SUBDIVIDED, THEIR SUCCESSORS AND ASSIGNS, TO ERECT, OPERATE, MAINTAIN, REPAIR AND RENEW CABLES, CONDUITS AND OTHER RELATED FACILITIES, AND TO EXTEND THEREON WIRES OR CABLES FOR THE CARRYING AND TRANSMISSION OF ELECTRIC CURRENT FOR LIGHT, HEAT AND POWER AND FOR THE TRANSMISSION OF SIGNALS AND SOUNDS OF ALL KINDS, INCLUDING SIGNALS PROVIDED BY A CABLE TELEVISION SYSTEM AND THEIR RECEPTION, ON, OVER, THROUGH, UNDER AND ACROSS ALL OPEN SPACES, COMMON GROUND, RECREATIONAL AREAS AND NON-PUBLIC ROADS; BUT THE SAME MAY BE USED FOR GARDENS, SHRUBS, LANDSCAPING AND OTHER PURPOSES THAT DO NOT THEN OR LATER INTERFERE WITH THE FORESAID USES OR RIGHTS THEREIN GRANTED.

*John M. Hosking*  
CHERRY TREE CORPORATION  
JOHN M. HOSKING, PRESIDENT  
*Spavel Schaefer*  
U.S. NATIONAL BANK  
*Raymond C. Matson*  
RAYMOND C. MATSON  
*Mildred E. Matson*  
MILDRED E. MATSON

STATE OF \_\_\_\_\_ COUNTY OF \_\_\_\_\_ SS  
ON THIS \_\_\_\_\_ DAY OF \_\_\_\_\_, 1983, BEFORE ME, A NOTARY PUBLIC, DULY COMMISSIONED AND QUALIFIED IN AND FOR SAID COUNTY, APPEARED JOHN M. HOSKING, WHO IS PERSONALLY KNOWN BY ME TO BE THE PRESIDENT OF CHERRY TREE CORPORATION (A NEBRASKA CORPORATION), AND HE DID ACKNOWLEDGE HIS EXECUTION OF THE FOREGOING DEDICATION TO BE HIS VOLUNTARY ACT AND DEED, AND THE VOLUNTARY ACT AND DEED OF SAID CHERRY TREE CORPORATION.

WITNESS MY HAND AND OFFICIAL SEAL THE DATE LAST AFORESAID.  
MY COMMISSION EXPIRES: \_\_\_\_\_ NOTARY PUBLIC

STATE OF \_\_\_\_\_ COUNTY OF \_\_\_\_\_ SS  
ON THIS \_\_\_\_\_ DAY OF \_\_\_\_\_, 1983, BEFORE ME, A NOTARY PUBLIC, DULY COMMISSIONED AND QUALIFIED IN AND FOR SAID COUNTY, APPEARED RAYMOND C. MATSON AND MILDRED E. MATSON, WHO ARE PERSONALLY KNOWN BY ME TO BE THE IDENTICAL PERSONS WHOSE NAMES ARE AFFIXED ABOVE, AND THEY DID ACKNOWLEDGE THEIR EXECUTION OF THE FOREGOING DEDICATION TO BE THEIR VOLUNTARY ACT AND DEED.

WITNESS MY HAND AND OFFICIAL SEAL THE DATE LAST AFORESAID.  
MY COMMISSION EXPIRES: \_\_\_\_\_ NOTARY PUBLIC

STATE OF \_\_\_\_\_ COUNTY OF \_\_\_\_\_ SS  
ON THIS \_\_\_\_\_ DAY OF \_\_\_\_\_, 1983, BEFORE ME, A NOTARY PUBLIC, DULY COMMISSIONED AND QUALIFIED IN AND FOR SAID COUNTY, APPEARED \_\_\_\_\_ OF U.S. NATIONAL BANK, AND THEY DID ACKNOWLEDGE THEIR EXECUTION OF THE FOREGOING DEDICATION TO BE THE VOLUNTARY ACT AND DEED OF SAID U.S. NATIONAL BANK.

WITNESS MY HAND AND OFFICIAL SEAL THE DATE LAST AFORESAID.  
MY COMMISSION EXPIRES: 10 20 83 NOTARY PUBLIC

COUNTY TREASURER'S CERTIFICATE  
THIS IS TO CERTIFY THAT I FIND NO REGULAR OR SPECIAL TAXES, DUE OR DELINQUENT, AGAINST THE PROPERTY DESCRIBED IN THE SURVEYOR'S CERTIFICATE AND EMBRACED IN THIS PLAT, AS SHOWN BY THE RECORDS OF THIS OFFICE, THIS 26 DAY OF \_\_\_\_\_, 1983.  
*Victor J. Mays*  
DEPUTY COUNTY TREASURER

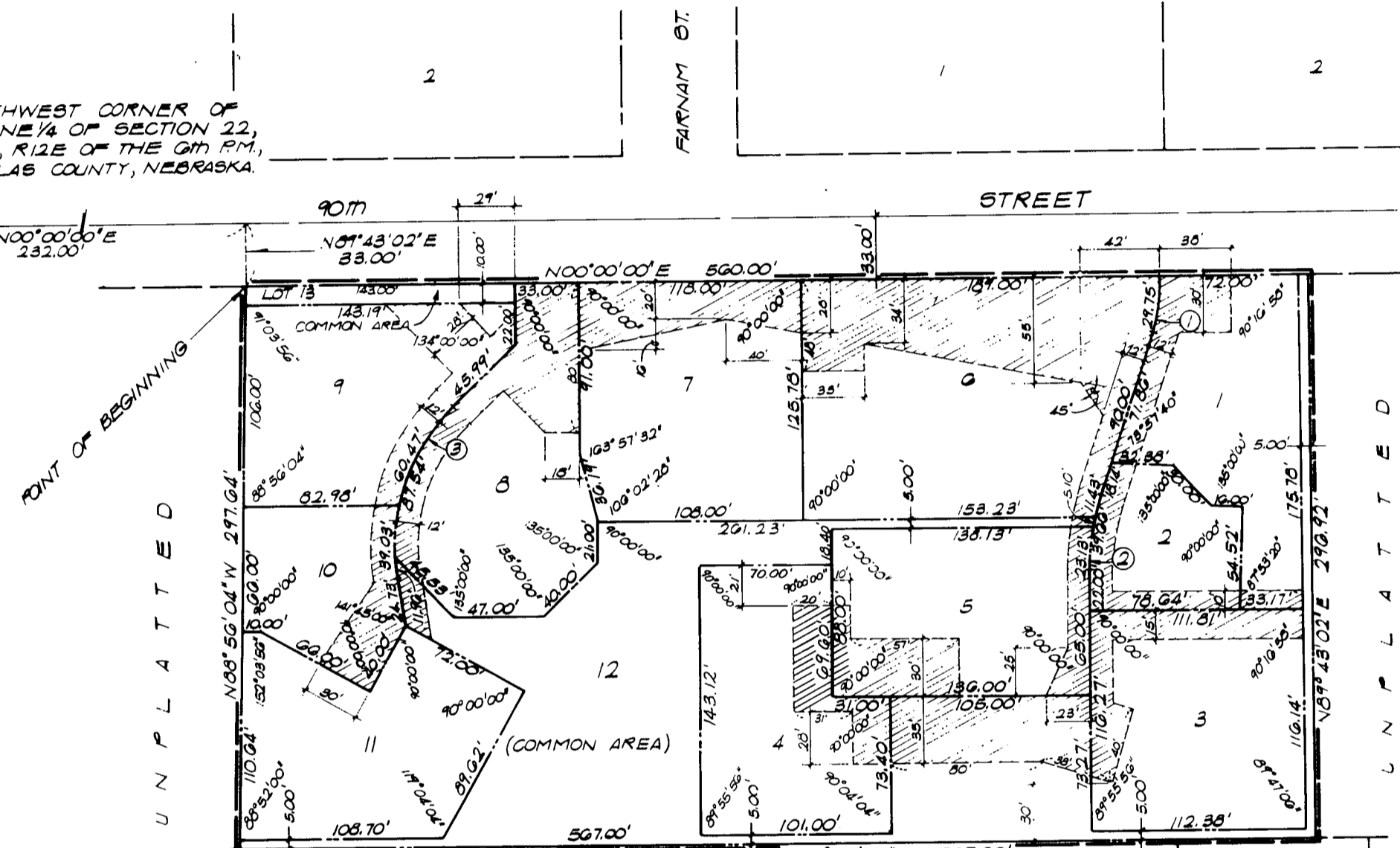
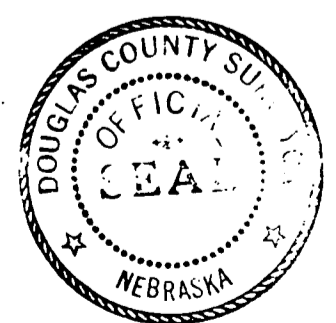
APPROVAL OF CITY ENGINEER  
I HEREBY APPROVE THE PLAT OF SPRING GREEN ON THIS 27th DAY OF May, 1983.  
*Raymond L. Herrmann*  
CITY ENGINEER

I HEREBY CERTIFY THAT ADEQUATE PROVISIONS HAVE BEEN MADE FOR COMPLIANCE WITH CHAPTER 53 OF THE OMAHA MUNICIPAL CODE.  
DATE August 24, 1983  
*Raymond L. Herrmann*  
CITY ENGINEER

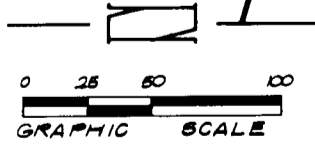
APPROVAL OF CITY PLANNING BOARD  
THIS PLAT OF SPRING GREEN WAS APPROVED BY THE CITY PLANNING BOARD OF THE CITY OF OMAHA, THIS \_\_\_\_\_ DAY OF \_\_\_\_\_, 1983.  
*Walter J. Mays*  
CHAIRMAN

APPROVAL OF OMAHA CITY COUNCIL  
THIS PLAT OF SPRING GREEN WAS APPROVED AND ACCEPTED BY THE CITY COUNCIL OF OMAHA THIS 12 DAY OF July, 1983.  
*Michael Boyle* Mayor  
*Bernie Semin* President  
*James D. Warner* City Clerk

REVIEW BY THE DOUGLAS COUNTY SURVEYOR  
THIS PLAT OF SPRING GREEN WAS REVIEWED BY THE DOUGLAS COUNTY SURVEYOR'S OFFICE ON THIS 27th DAY OF APRIL, 1983.  
*Thomas J. ...*  
DOUGLAS COUNTY SURVEYOR



CURVE	DATA	
① Δ = 18° 09' 00"	② Δ = 18° 09' 00"	③ Δ = 55° 15' 00"
D = 61.01139	D = 45.75976	D = 55.52994
T = 15.00'	T = 20.00'	T = 54.00'
L = 29.75'	L = 39.66'	L = 99.50'
R = 93.91'	R = 125.21'	R = 103.18'



LEGEND  
PRIVATE INGRESS AND EGRESS EASEMENT

## BOOK 1712

THOMPSON, DREBSSEN & DORNER  
Consulting Engineers & Land Surveyors

SCALE: 1" = 50'

DATE: 4-11-83

DRAWN BY: JD

CHECKED BY: JSD

REVISION:

SPRING GREEN

FINAL PLAT

JOB NO. 383-101

SPRING GREEN