

SOUTHRIDGE

(LOTS 1 THRU 162 INCLUSIVE & O.L.'S)
BEING PART OF TAX LOT 16, ALL LOCATED
IN THE NORTH EAST 1/4 OF SECTION 13,
TOWNSHIP 14 NORTH, RANGE 11 EAST OF THE
6TH P.M., SARPY COUNTY, NEBRASKA.

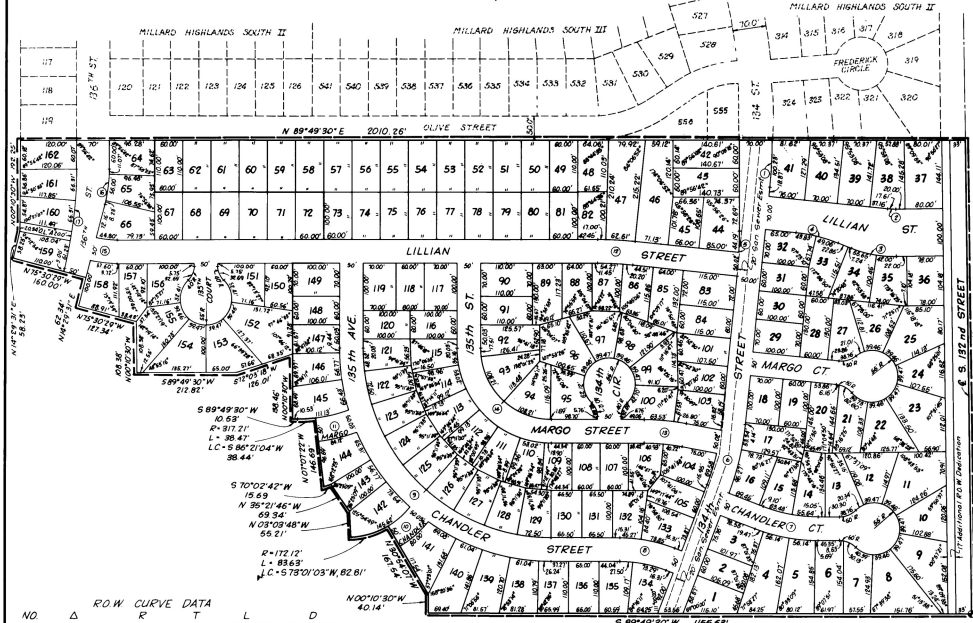
Map of Plat 37⁰²
MADE 67
1955 MAR 19 PM 12:59
C. G. Smith
REGISTERED DEED

SURVEYOR'S CERTIFICATE

I hereby certify that I have made a boundary survey of the subdivision herein, and that permanent markers have been placed at all corners on the boundary of this plat, and that permanent markers will be placed at all the corners and points on all curves on the interior, said subdivision is known as Southridge, Lots 1 thru 162, and O.L.'S, and being part of Tax Lot 16 located in the Northeast 1/4 of Section 13, Township 14 North, Range 11 East of the 6th P.M., Sarpy County, Nebraska, more particularly described as follows:

Beginning at the Southeast corner of said Northeast 1/4 of Section 13; thence S89°49'30"W (assumed bearing), along the South line of said Northeast 1/4 of Section 13, a distance of 1151.23 feet; thence N00°10'30"W, a distance of 40.14 feet; thence S03°54'07"W, a distance of 161.34 feet; thence Southwesterly on a curve to the right with a radius of 172.12 feet, a distance of 81.63 feet; said curve having a long chord which bears S73°03'07"W, a distance of 81.63 feet; thence N03°03'48"W, a distance of 55.21 feet; thence S05°21'46"W, a distance of 69.34 feet; thence S70°02'47"W, a distance of 15.69 feet; thence N51°07'22"W, a distance of 145.69 feet; thence Westwesterly on a curve to the right with a radius of 311.25 feet, a distance of 38.49 feet; said curve having a long chord which bears S66°21'04"W, a distance of 38.44 feet; thence S89°49'30"W, a distance of 10.53 feet; thence N00°10'30"W, a distance of 138.44 feet; thence S72°02'18"W, a distance of 120.01 feet; thence S89°49'30"W, a distance of 21.32 feet; thence N00°10'30"W, a distance of 108.38 feet; thence N75°30'29"W, a distance of 121.34 feet; thence N14°29'31"W, a distance of 82.14 feet; thence N05°10'29"W, a distance of 160.50 feet; thence N14°29'31"W, a distance of 99.23 feet; thence N00°10'30"W, a distance of 192.25 feet to a point on the South line of Millard Highlands South II and III, subdivisions located in the North 1/2 of said Section 13; thence S89°49'30"W along said South line of Millard Highlands South II and III and the South line of Olive Street a distance of 2010.26 feet, to a point on the East line of said Section 13; thence S0°00'57"W, along said East line of Section 13, a distance of 1500.14 feet to the Point of Beginning.

6-14-85
Date Robert Clark
Surveyor



NO	Δ	R	T	L	D
①	5°56'26"	966.71'	50.16'	100.28'	5.92639"
②	6°43'35"	150.00'	8.81'	17.51'	38.19724"
③	22°22'47"	250.00'	49.46'	97.65'	22.91839"
④	15°39'12"	340.00'	46.74'	92.89'	16.85177"
⑤	5°56'26"	308.68'	47.15'	94.21'	6.305339"
⑥	10°41'10"	281.04'	33.86'	75.81'	9.549544"
⑦	14°41'19"	832.29'	101.52'	218.85'	6.484111"

NO	Δ	T	L	D	
①	15°06'52"	542.14'	71.93'	143.02'	10.56855"
②	21°00'00"	350.00'	64.87'	128.28'	16.37021"
③	21°00'00"	300.00'	55.60'	109.96'	19.09866"
④	90°00'00"	425.00'	425.00'	667.59'	13.48141"
⑤	20°38'08"	1971.12'	316.89'	710.00'	23.06665"
⑥	13°07'32"	342.21'	39.37'	78.39'	16.74229"
⑦	5°58'08"	750.00'	38.55'	77.04'	7.63994"
⑧	10°51'12"	466.96'	42.99'	85.74'	12.27021"
⑨	90°00'00"	175.00'	175.00'	274.89'	32.74005"
⑩	14°40'01"	200.01'	25.74'	51.20'	28.64647"

SARPY COUNTY BOARD OF COMMISSIONERS APPROVAL
This final plat of Southridge was approved by the County Board of Commissioners on this 22nd day of February, 1985.

Edward J. Ault
Chairman, Sarpy County Board of Commissioners

SARPY COUNTY PLANNING COMMISSION APPROVAL
This final plat of Southridge was approved by the County Planning Commission on this 22nd day of February, 1985.

John A. Johnson
Chairman, Sarpy County Planning Commission

SARPY COUNTY SURVEYOR APPROVAL
I hereby approve this final plat of Southridge on this 19th day of February, 1985.

Norman Whitney
Sarpy County Surveyor

SARPY COUNTY TREASURER'S CERTIFICATE
This is to certify that I find no regular or special taxes due or delinquent against the property described in the Surveyor's Certificate and enclosed in this plat, as shown by the records of this office on this 19th day of February, 1985.

Norman C. Johnson
Sarpy County Treasurer

SARPY COUNTY BUILDING INSPECTOR APPROVAL
This final plat of Southridge was approved on this 20th day of February, 1985.

Marion J. Schmidt
Sarpy County Building Inspector

ACKNOWLEDGEMENT OF NOTARY
STATE OF NEBRASKA
COUNTY OF SARPY
On this 14th day of February, 1985, before me the undersigned, a Notary Public, personally appeared George Bussell, Vice President of Omaha Industrial Foundation and Charles G. Smith, Trustee, to me personally known to be the individuals whose names are affixed to the foregoing instrument as such officers of said corporations, and has acknowledged the same to be their voluntary act and deed and the voluntary act and deed of said corporations.

George Bussell
Charles G. Smith, Trustee
George Bussell
Vice-President

Witness my hand and Notarial Seal at Omaha, Nebraska, in said County the day and year last above written. My Commission expires the 14th day of March, 1987.

John W. Johnston
Notary Public



ELLIOTT & ASSOCIATES
2318 SOUTH 132ND STREET - OMAHA, NE 68137 - (402) 846-1700

SOUTHRIDGE
SARPY COUNTY, NE

FINAL PLAT

PLAT 37⁰²
1-1-00
10/17/1985
COUNTY