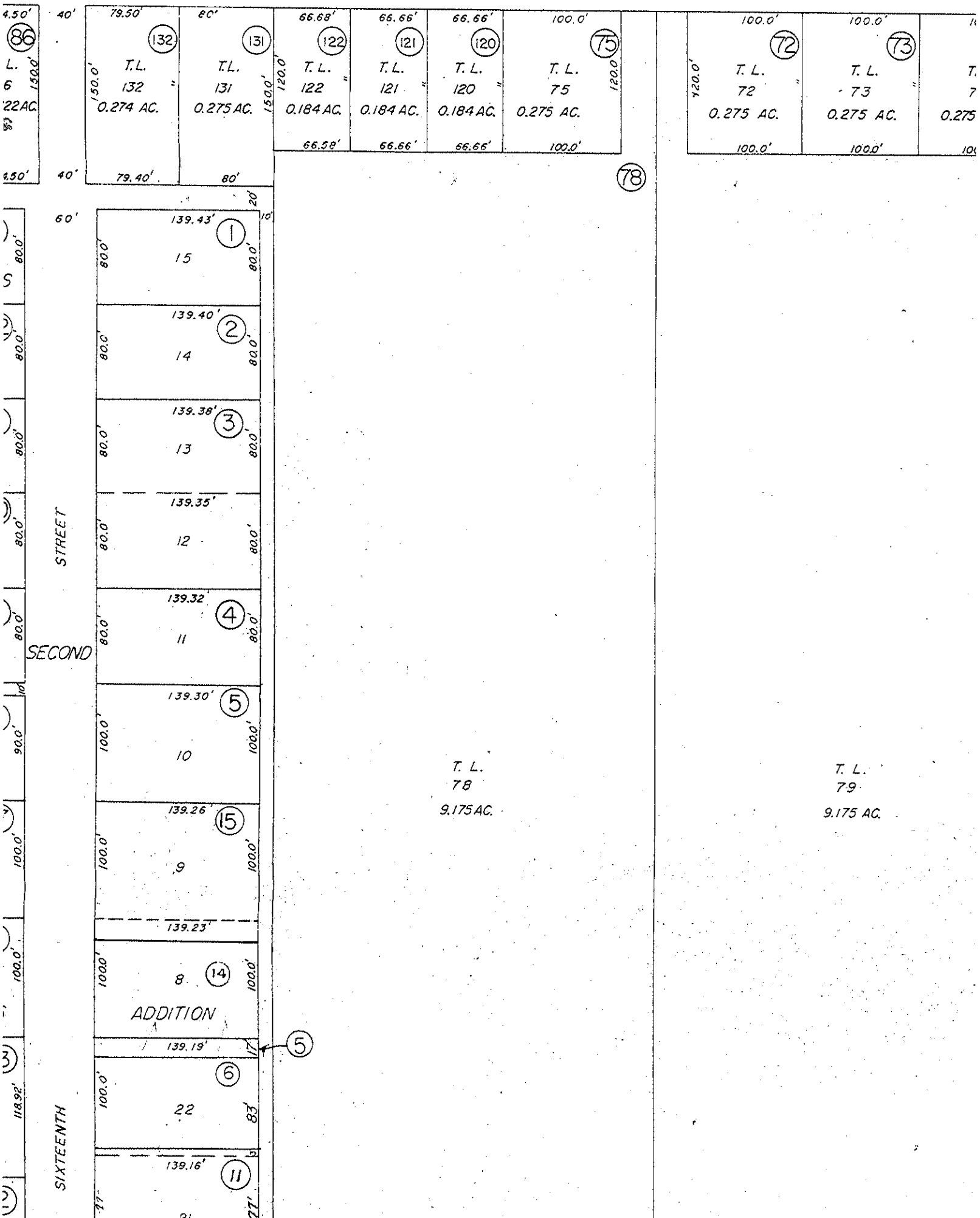
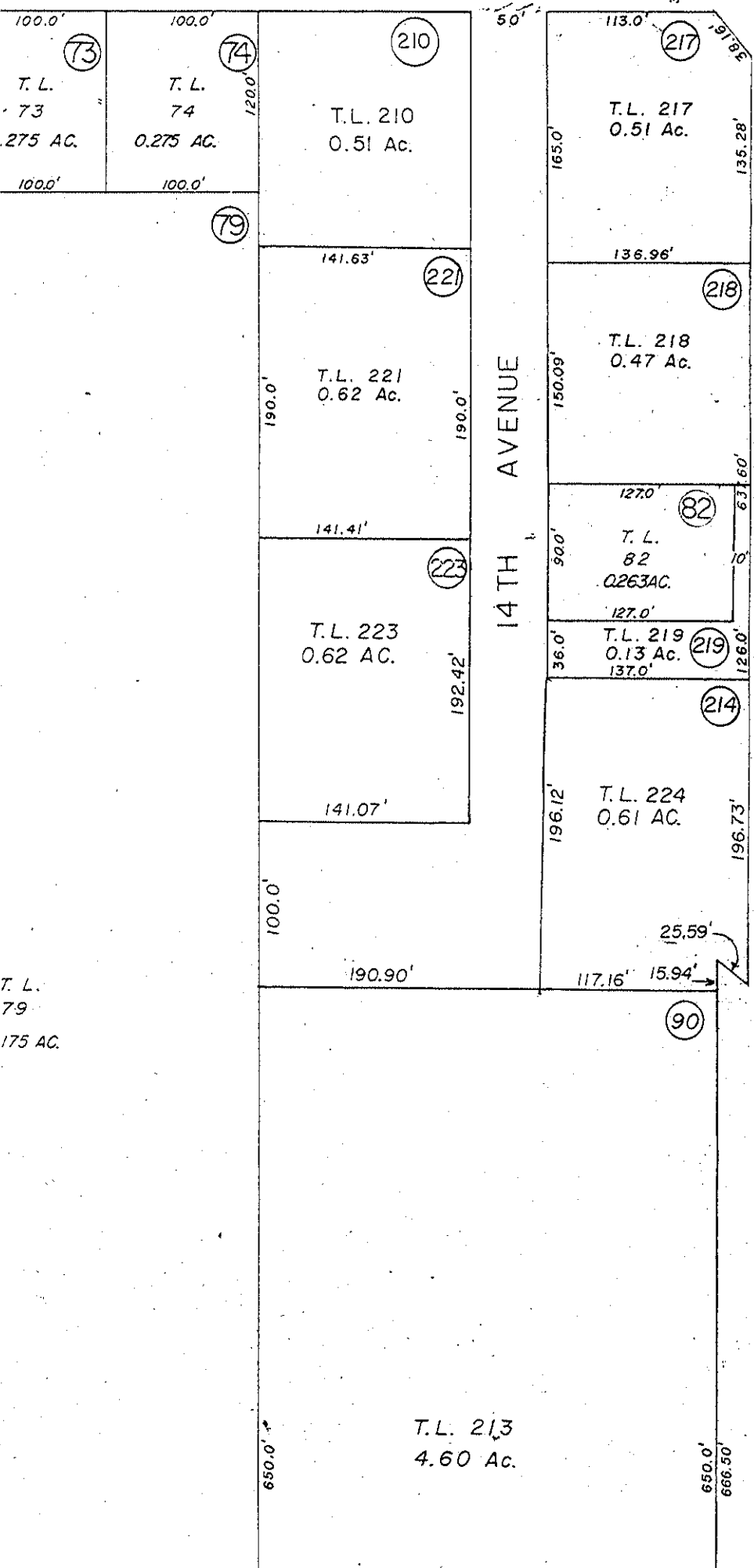


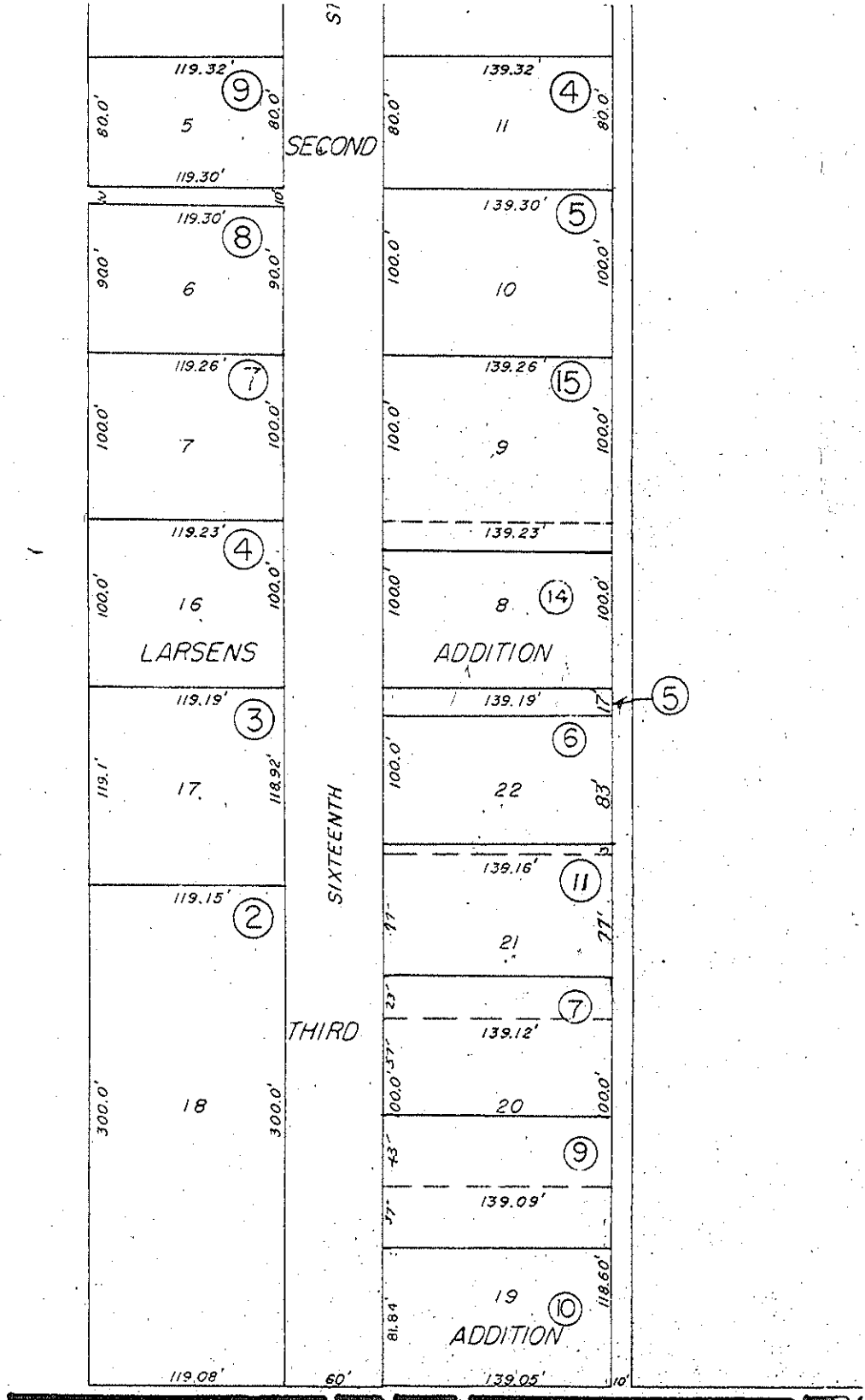
WILBUR

STREET

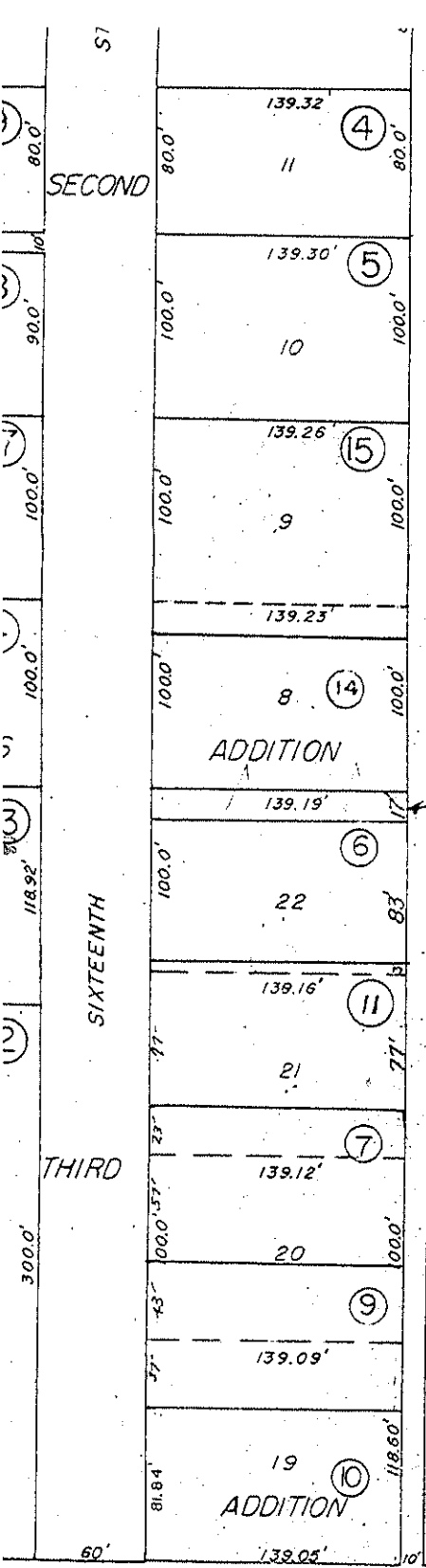


STREET





SCALE 1"=100'



T. L.
 78
 9.175 AC.

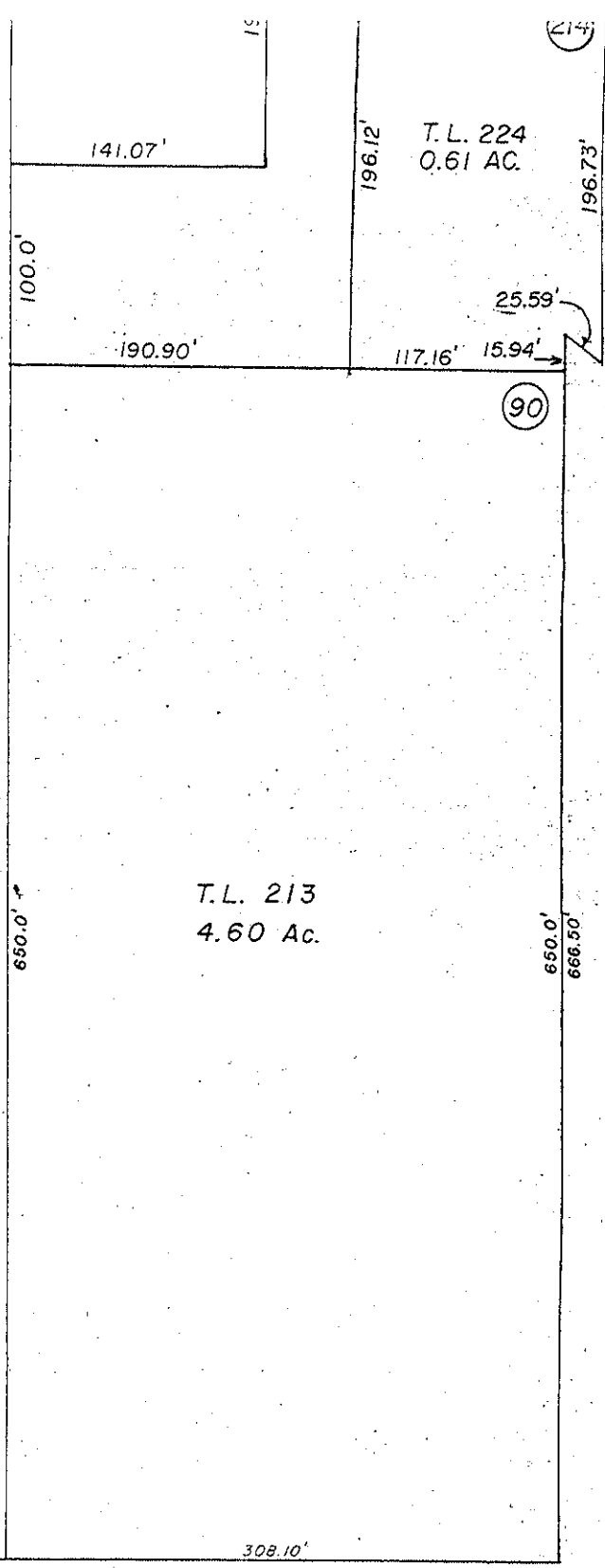
T. L.
 79
 9.175 AC.

BOOK 2 PAGE 12

1"=100'

	Stewart A. Smith & Associates			DAT
	REGISTERED LAND SURVEYORS			REV
BLAIR, NEBRASKA				

T. L.
79
175 AC.



BOOK 2-A PAGE B-38

BOOK 2-A PAGE B-37

Associates Surveyors	DATE	LOCATION SW 1/4 NW 1/4 SECTION 13 T-18-N R-11-E LARSENS SECOND ADDITION LARSENS THIRD ADDITION
	REVISIONS	
WASHINGTON COUNTY NEBRASKA		AUTHORIZED BY: L. B. 374
CADASTRAL MAP		