

2006-32931

2006-32931

SOUTHERN PINES

Lots 1 through 116, including, and Orlan A through E, including, including a portion of Lot 1, Orlan A through E, including, including and including in Sarpy County, Nebraska, and a portion of the East 1/2 of the Northeast Quarter of Section 21, Township 14 North, Range 11 East of the 6th P.M., Sarpy County, Nebraska.

LAND SURVEYOR'S CERTIFICATE

I, JERRY CURRY, INC., a corporation organized under the laws of the State of Nebraska, do hereby certify that the plat of the subdivision herein is a true and correct copy of the original plat as filed in the office of the County Clerk of Sarpy County, Nebraska, and that the same is a true and correct copy of the original plat as filed in the office of the County Clerk of Sarpy County, Nebraska.



DEDICATION

WHEREAS, the Southern Pines Development, LLC, owner of the land described herein, has caused to be filed in the office of the County Clerk of Sarpy County, Nebraska, a plat of the subdivision herein, and has caused to be filed in the office of the County Clerk of Sarpy County, Nebraska, a plat of the subdivision herein, and has caused to be filed in the office of the County Clerk of Sarpy County, Nebraska, a plat of the subdivision herein...

ACKNOWLEDGMENT OF NOTARY

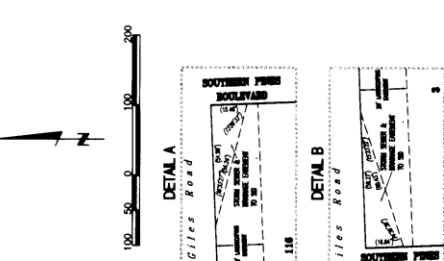
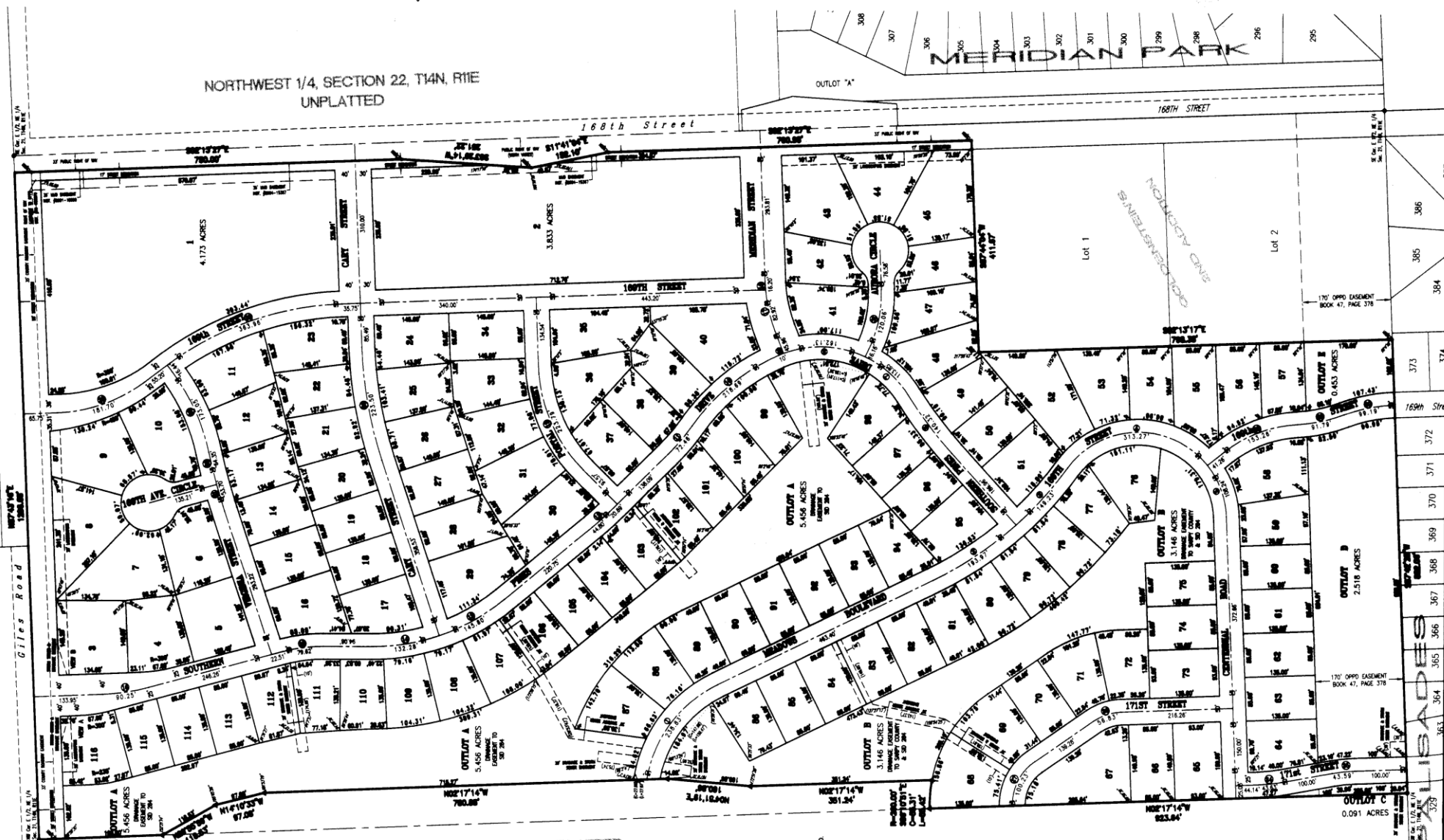
I, Dawn M. Putnam, Notary Public for Sarpy County, Nebraska, do hereby certify that the foregoing is a true and correct copy of the original plat as filed in the office of the County Clerk of Sarpy County, Nebraska.

APPROVAL OF COUNTY DIRECTOR OF PLANNING AND BUILDINGS. APPROVAL OF COUNTY BOARD OF COMMISSIONERS. COUNTY TREASURER'S CERTIFICATE. COUNTY SURVEYOR'S CERTIFICATE.

Official stamps and signatures of County Director, Board of Commissioners, Treasurer, and Surveyor.

WWW.LRA-INC.COM

Lamp, Ryeason & Associates, Inc. 14710 West Dodge Road, Suite 100 Omaha, Nebraska 68154-2027 (Fax) 402.496.2730 (Tel) 402.496.2498



LEGEND, NOTES, SECTION CORNER TIES. 1. ALL DIMENSIONS ARE SHOWN IN FEET. 2. ALL DIMENSIONS SHOWN ALONG CURVES ARE ARC DIMENSIONS NOT CHORD DIMENSIONS.

Table with 3 columns: CURVE, BEARS, and DATA. Contains curve data for various sections of the subdivision.

Recorder Note: FILED PER CERTIFICATE OF EXTENSION. LAL 9-23-04

2006-32931