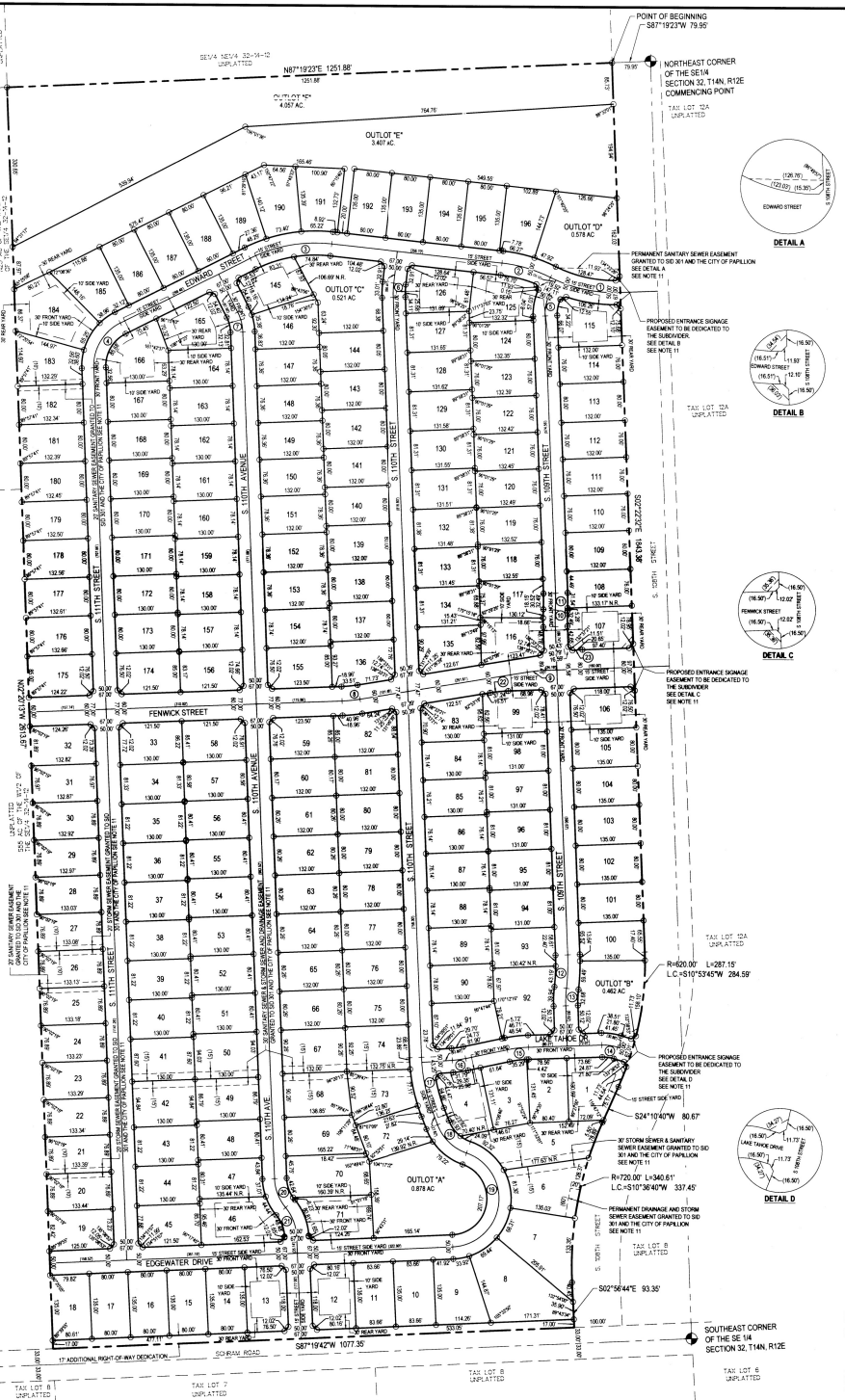
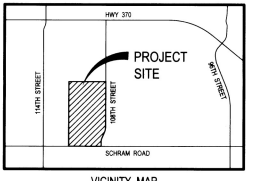
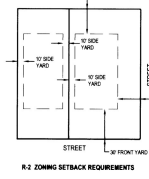
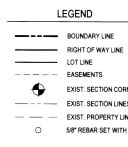


# SOUTHBROOK

LOTS 1 THRU 196 & OUTLOTS 'A' THRU 'F' INCLUSIVE  
A TRACT OF LAND LOCATED IN PART OF THE E1/2 OF THE SE1/4 OF SECTION 32, TOWNSHIP 14 NORTH, RANGE 12 EAST OF THE 6TH P.M. SAPPY COUNTY, NEBRASKA

FILED SAPPY COUNTY NEBRASKA  
INSTRUMENT NUMBER  
2015-0561  
03/18/2015 11:12:48 AM  
Randy J. Reising  
REGISTER OF DEEDS



LOT AREAS table with columns for Lot No. and Sq. Footage, listing lots 1 through 110.

LOT AREAS table with columns for Lot No. and Sq. Footage, listing lots 111 through 210.

LOT AREAS table with columns for Lot No. and Sq. Footage, listing lots 211 through 310.

LOT AREAS table with columns for Lot No. and Sq. Footage, listing lots 311 through 410.

LOT AREAS table with columns for Lot No. and Sq. Footage, listing lots 411 through 490.

LOT AREAS table with columns for Lot No. and Sq. Footage, listing lots 491 through 590.

LOT AREAS table with columns for Lot No. and Sq. Footage, listing lots 591 through 690.

LOT AREAS table with columns for Lot No. and Sq. Footage, listing lots 691 through 790.

LOT AREAS table with columns for Lot No. and Sq. Footage, listing lots 791 through 890.

LOT AREAS table with columns for Lot No. and Sq. Footage, listing lots 891 through 990.

LOT AREAS table with columns for Lot No. and Sq. Footage, listing lots 991 through 1090.

LOT AREAS table with columns for Lot No. and Sq. Footage, listing lots 1091 through 1190.

LOT AREAS table with columns for Lot No. and Sq. Footage, listing lots 1191 through 1290.

LOT AREAS table with columns for Lot No. and Sq. Footage, listing lots 1291 through 1390.

LOT AREAS table with columns for Lot No. and Sq. Footage, listing lots 1391 through 1490.

### SURVEYORS CERTIFICATION

I HEREBY CERTIFY THAT I HAVE MADE A SOUND SURVEY OF THE SUBDIVISION DESCRIBED HEREIN AS SOUTH BROOK, A TRACT OF LAND LOCATED IN PART OF THE E1/2 OF THE SE1/4 OF SECTION 32, TOWNSHIP 14 NORTH, RANGE 12 EAST OF THE 6TH P.M. SAPPY COUNTY, NEBRASKA, MORE PARTICULARLY DESCRIBED AS FOLLOWS:

COMMENCING AT THE NORTHEAST CORNER OF SAID SE1/4 OF SECTION 32, THENCE S87°19'27\"/>

APPROVAL BY PAPILLON CITY COUNCIL  
APPROVED BY PAPILLON CITY ENGINEER

NOTARY PUBLIC  
NOTARY PUBLIC  
APPROVAL BY PAPILLON CITY ENGINEER

CURVE RADIUS LENGTH TANGENT DELTA table with 3 rows of curve data.

CENTERLINE CURVE TABLE table with 20 rows of curve data including curve number, radius, length, tangent, and delta.

- NOTES: 1. ALL ANGLES ARE 90° UNLESS OTHERWISE NOTED. 2. ALL LOT LINES ARE RADIAL TO CURVED STRIPS UNLESS SHOWN AS NONRADIAL (N.R.). 3. A STORM SEWER AND DRAINAGE EASEMENT IS GRANTED OVER ALL OF OUTLOTS 'A'...

E & A CONSULTING GROUP, INC. logo and contact information. SOUTH BROOK logo. SAPPY COUNTY NEBRASKA seal. REGISTER OF DEEDS stamp. Final Plat title.