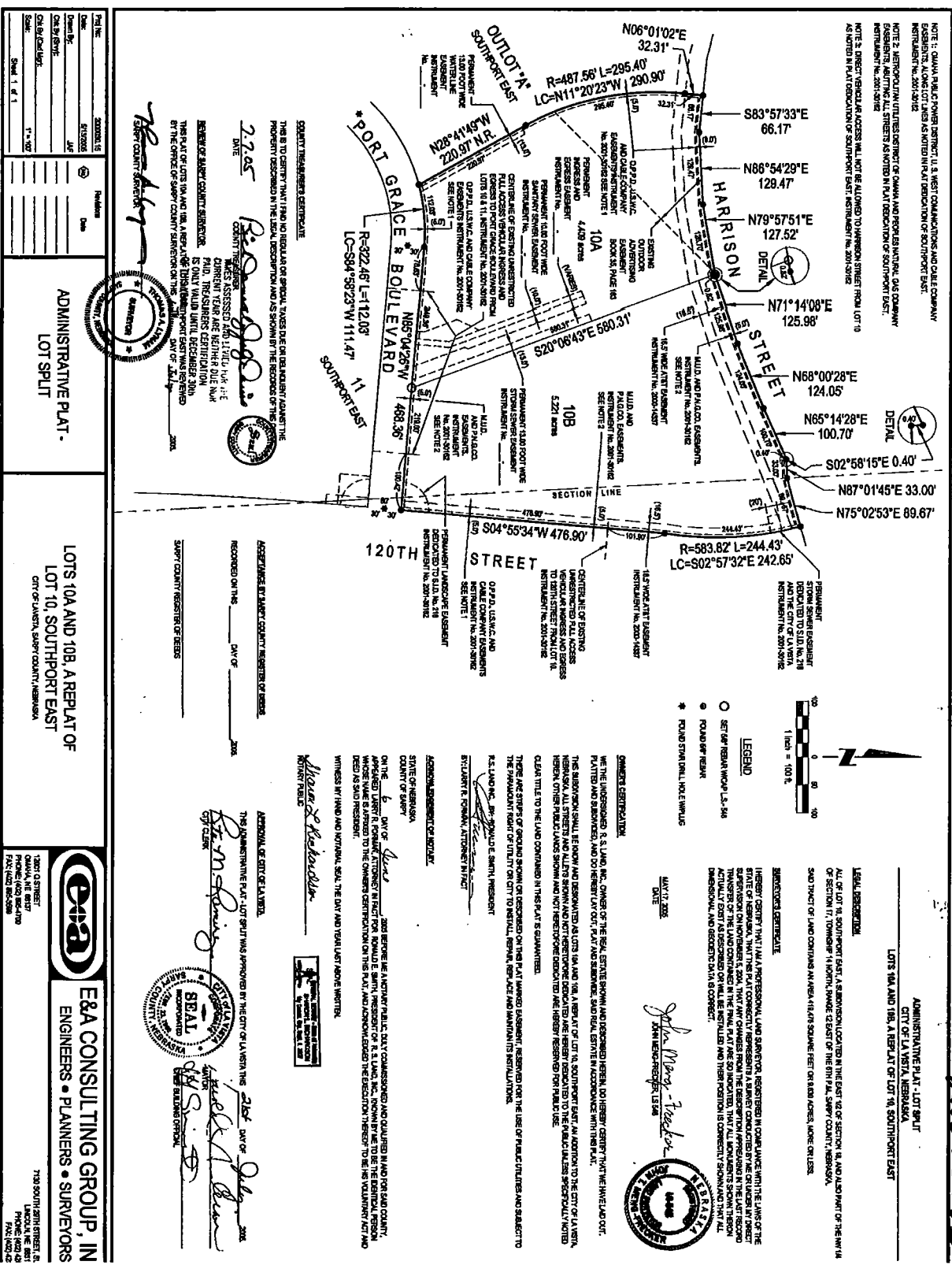


RECORDING INFORMATION
 REEL 15, 50
 SHEET 1 OF 1



Plat No.	20050515
Book	5183
Page	1
City	La Verna
County	Sarpy
State	Nebraska
City Engineer	[Signature]
City Clerk	[Signature]
Notary Public	[Signature]
Sheet 1 of 1	

ADMINISTRATIVE PLAT - LOT SPLIT

LOTS 10A AND 10B, A REPLAT OF LOT 10, SOUTHPORT EAST CITY OF LA VERNA, SARPY COUNTY, NEBRASKA

E&A CONSULTING GROUP, INC.
 ENGINEERS • PLANNERS • SURVEYORS

7120 SOUTH 29TH STREET
 LINCOLN, NEBRASKA 68503
 PHONE: (402) 486-8888
 FAX: (402) 486-3888

2005-25583