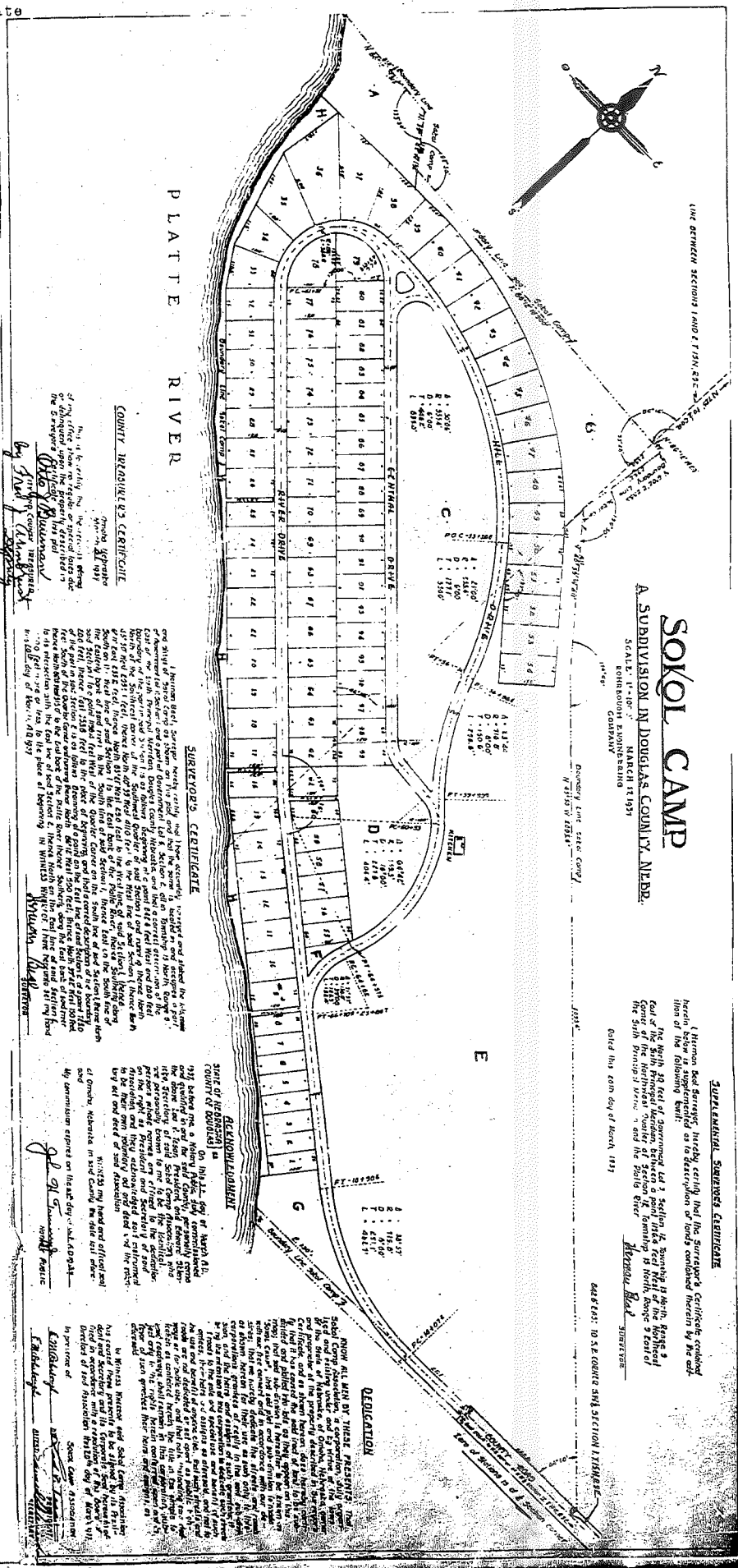


# DEED RECORD No. 643

12. Certified Copy of Plat and Surveyor's Certificate of Sokol Camp



**SURVEYOR'S CERTIFICATE**

I, the undersigned, being duly sworn, do hereby certify that the above plat and survey were made by me or under my direction and supervision, and that the same are true and correct in accordance with the laws of Nebraska, and that the same have been filed for record in the office of the Register of Deeds of Douglas County, Nebraska, and that the same are a true and correct copy of the original plat and survey as the same were made by me or under my direction and supervision.

Witness my hand and official seal at Omaha, Nebraska, this 11th day of March, 1937.

*Wm. J. O'Connor*  
 Surveyor

**ACKNOWLEDGMENT**

I, the undersigned, do hereby certify that the above plat and survey were made by me or under my direction and supervision, and that the same are true and correct in accordance with the laws of Nebraska, and that the same have been filed for record in the office of the Register of Deeds of Douglas County, Nebraska, and that the same are a true and correct copy of the original plat and survey as the same were made by me or under my direction and supervision.

Witness my hand and official seal at Omaha, Nebraska, this 11th day of March, 1937.

*Wm. J. O'Connor*  
 Surveyor

**DEED**

I, the undersigned, do hereby certify that the above plat and survey were made by me or under my direction and supervision, and that the same are true and correct in accordance with the laws of Nebraska, and that the same have been filed for record in the office of the Register of Deeds of Douglas County, Nebraska, and that the same are a true and correct copy of the original plat and survey as the same were made by me or under my direction and supervision.

Witness my hand and official seal at Omaha, Nebraska, this 11th day of March, 1937.

*Wm. J. O'Connor*  
 Surveyor

State of Nebraska ss.  
 County of Douglas ss.  
 Entered in Numerical  
 Index and filed for  
 Record in the Register  
 of Deeds Office of said  
 County, the 5th day of  
 April, A.D., 1937, at  
 11:30 o'clock, A.M.

Thomas J. O'Connor,  
 Register of Deeds.  
 Compared by *[Signature]*

**SOKOL CAMP**  
 A SUBDIVISION IN DOUGLAS COUNTY, NEBR.  
 SCALE: 1" = 100'  
 MARCH 11 1937  
 HENNINGSON COMPANY

**SUPERINTENDENT, SURVEYOR'S CERTIFICATE**

I, the undersigned, being duly sworn, do hereby certify that the above plat and survey were made by me or under my direction and supervision, and that the same are true and correct in accordance with the laws of Nebraska, and that the same have been filed for record in the office of the Register of Deeds of Douglas County, Nebraska, and that the same are a true and correct copy of the original plat and survey as the same were made by me or under my direction and supervision.

Witness my hand and official seal at Omaha, Nebraska, this 11th day of March, 1937.

*Wm. J. O'Connor*  
 Surveyor

### DEDICATION

THE UNDERSIGNED, being duly sworn, do hereby certify that the above plat and survey were made by me or under my direction and supervision, and that the same are true and correct in accordance with the laws of Nebraska, and that the same have been filed for record in the office of the Register of Deeds of Douglas County, Nebraska, and that the same are a true and correct copy of the original plat and survey as the same were made by me or under my direction and supervision.

Witness my hand and official seal at Omaha, Nebraska, this 11th day of March, 1937.

*Wm. J. O'Connor*  
 Surveyor