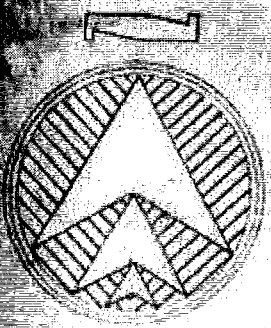
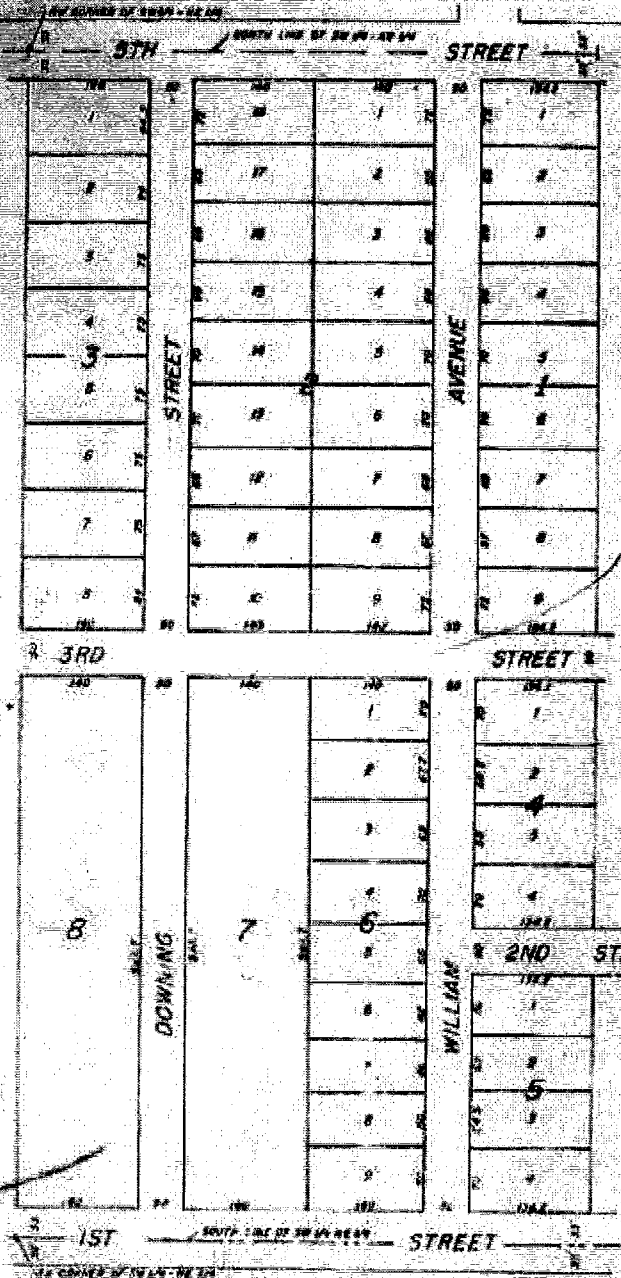


BLOCK HOMES ADDITION

TO
PREMONT, NEBRASKA
SCALE 1"=100'



STATE OF NEBRASKA
COUNTY OF...
I, Notary Public for said County, do hereby certify that the foregoing is a true and correct copy of the original plat on file in my office.
Notary Public

NOTARY PUBLIC
STATE OF NEBRASKA

SURVEYOR'S CERTIFICATE
I have hereby surveyed and marked and my assistants, employees, surveyors and starting of SURVEYOR'S HOMES ADDITION in Fremont, Neb., for the above described block of 27 lots and lots therein in the plat shown, and all measurements by means of this plat are true and correct and all other matters therein are correct.
Notary Public
City of Fremont, Nebraska

EDUCATION

ALL MEN BY THE 1 PRESENTS THE CITY OF JEROME, and Douglas, Johnson, Harrison and also, and their (Grand old) City, and also the action of the 117th of the 30th of 1870...
...of the tract of land described above, in certain sections and lots...
...SECOND STREET and DOWNING STREET between 1st and 3rd Streets, each 50 feet in width, the north 25 feet of...
...DOWNING STREET between 1st and 3rd Streets for public use...
...for the purpose of establishing and maintaining...
...and nothing to be the vehicle and road.

WITNESSED my hand and seal of office this 10th day of July, 1900.

NOTARY

...FRANCIS DEAN...
...OFFICE...