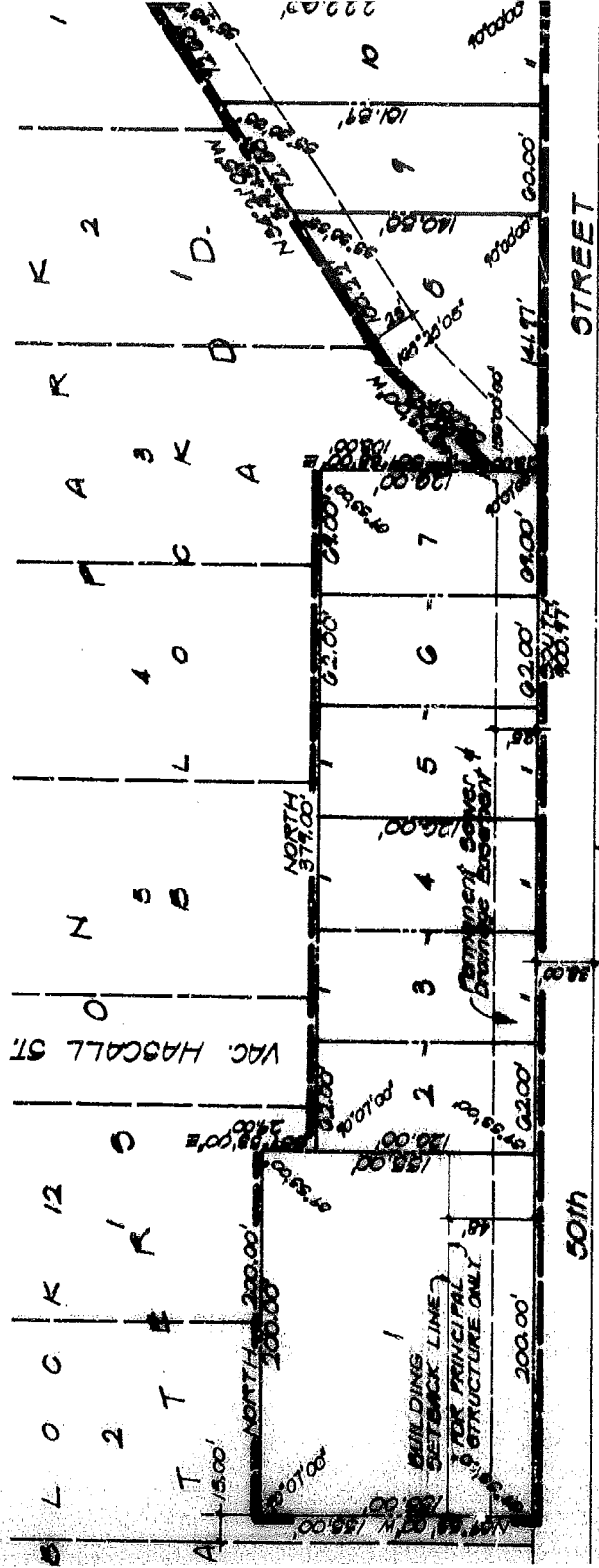


# SCHWALB'S 7TH ADD

(A CLUSTER SUBDIVISION)  
 LOTS 1 THRU 11, INCLUSIVE

BEING A REPLATTING OF A PART OF LOTS 1, 2, 3, 4 AND 5, BLOCK 1, TOGETHER WITH A PART OF LOTS 1 AND 2, BLOCK 12, WATKINSON PARK ADDITION, AS SUBMITTED PLATTED AND RECORDED, AND PART OF HOGATED HASCALL & SPRING STREETS, ALL IN DOUGLAS COUNTY, NEBRASKA.

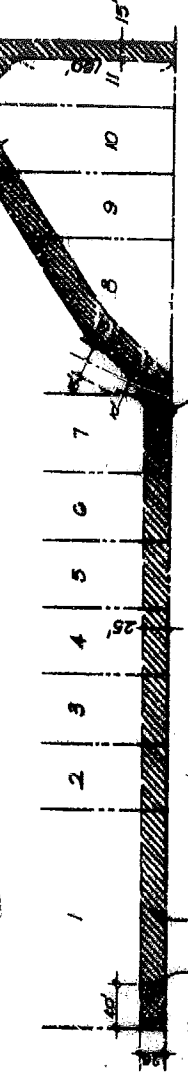


NOTE  
 For Easements, See  
 Detail Below



WALLEY ST.

Point of Beginning



Existing Sewer Easement  
 Granted To The City of Omaha  
 Is Recorded In Misc. Book 664,  
 Page 476, Douglas County  
 Records.

Remainder Sewer &  
 Drainage Easement To  
 Be Granted To The City  
 Of Omaha.

Existing Sewer & Drainage Easement  
 Granted To The City of Omaha As  
 Recorded In Misc. Book 591, Page 605  
 & Misc. Book 411, Page 301, Douglas  
 County, Records.

Legend:  
 Easement Area (hatched pattern)  
 Easement Area (diagonal lines)

## EASEMENT DETAIL

NO SCALE

2720 Road

RECEIVED  
 1985 JUL 28 PM 2  
 OFFICE OF THE CLERK



