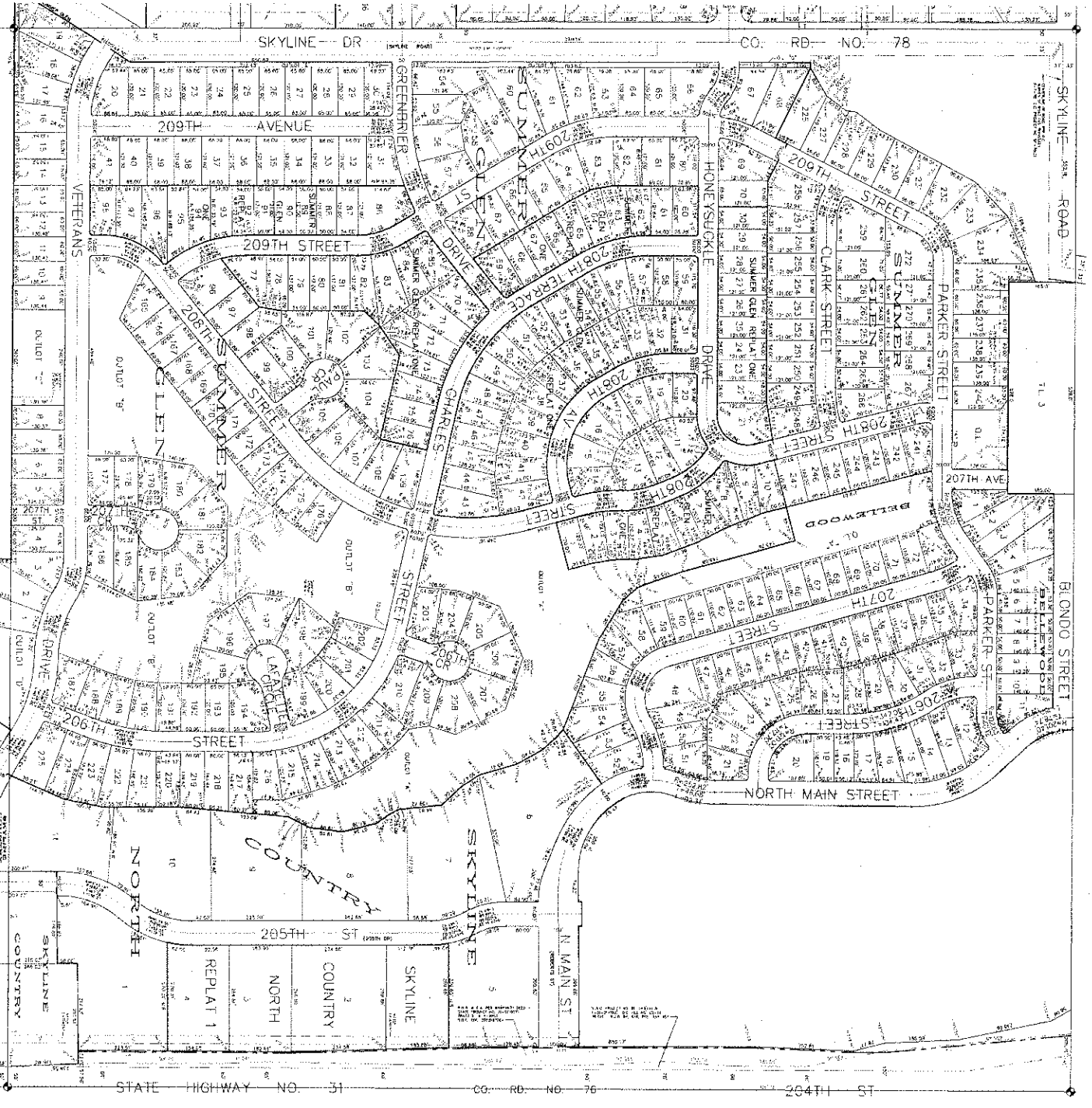


N.E. 1/4 SEC. 13-15-10



DOUGLAS COUNTY ENGINEER
 156TH & W. MAPLE RD. OMAHA NE. 68116

DRAWN BY	DATE	COMMENTS
BB	11-7-2007	SHAWER GLEN REPLAT ONE
BLC	3-30-2008	DOUGLAS COUNTY NORTH REPLAT 1 (L-1-4)
BB	3-28-2009	"SHAWER GLEN (L-228-172)
BLC	9-5-2008	BELLMWOOD (L-1-3) & (L-4)

SCALE: 1" = 100'

INFORMATION ON THIS SHEET SHOULD BE VERIFIED WITH THE FINAL PLAT BEFORE BEING USED

NORTH ►