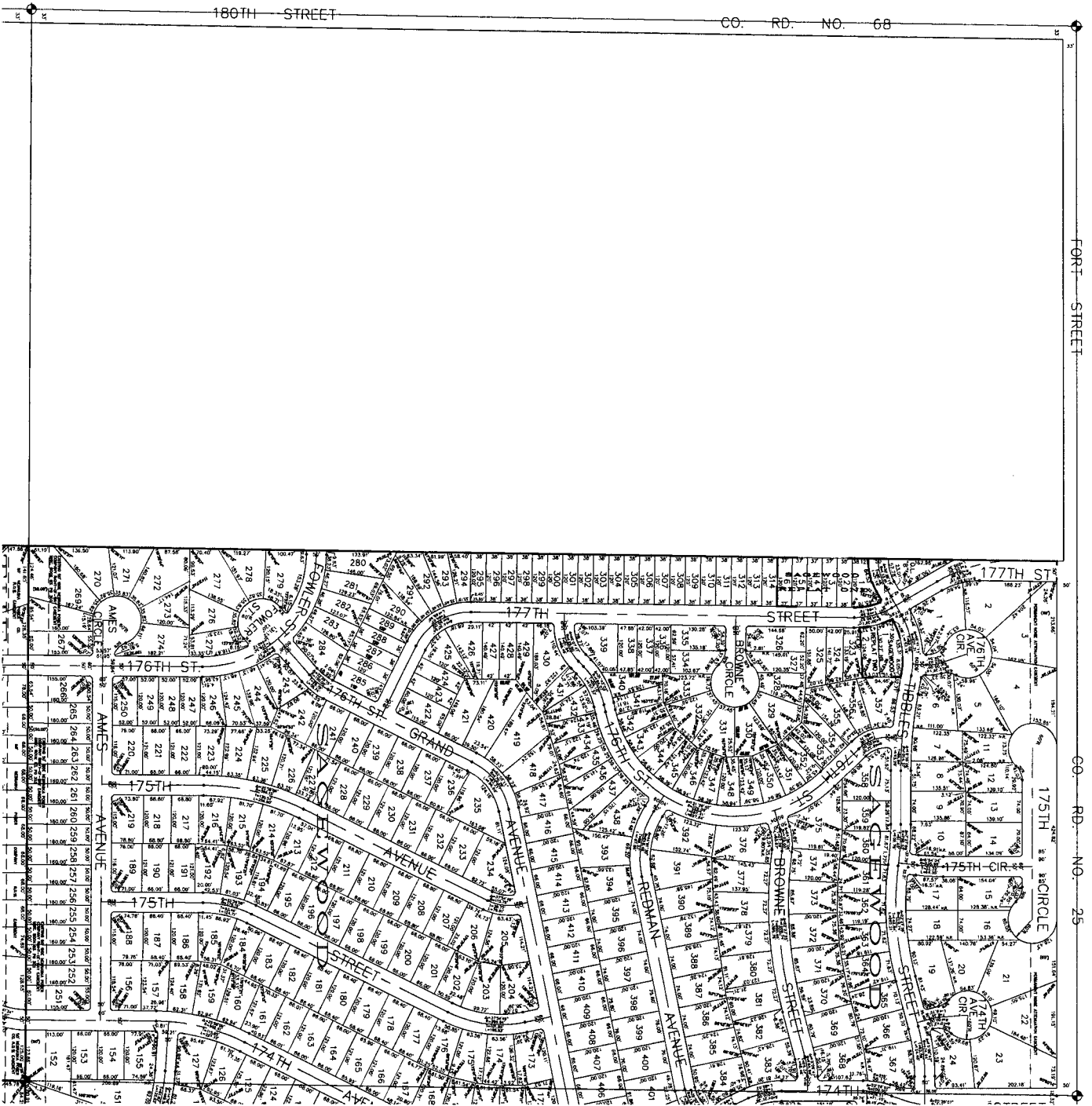


N.W. 1/4 SEC. 04-15-11



DOUGLAS COUNTY ENGINEER

156TH & W. MAPLE RD. OMAHA NE. 68116

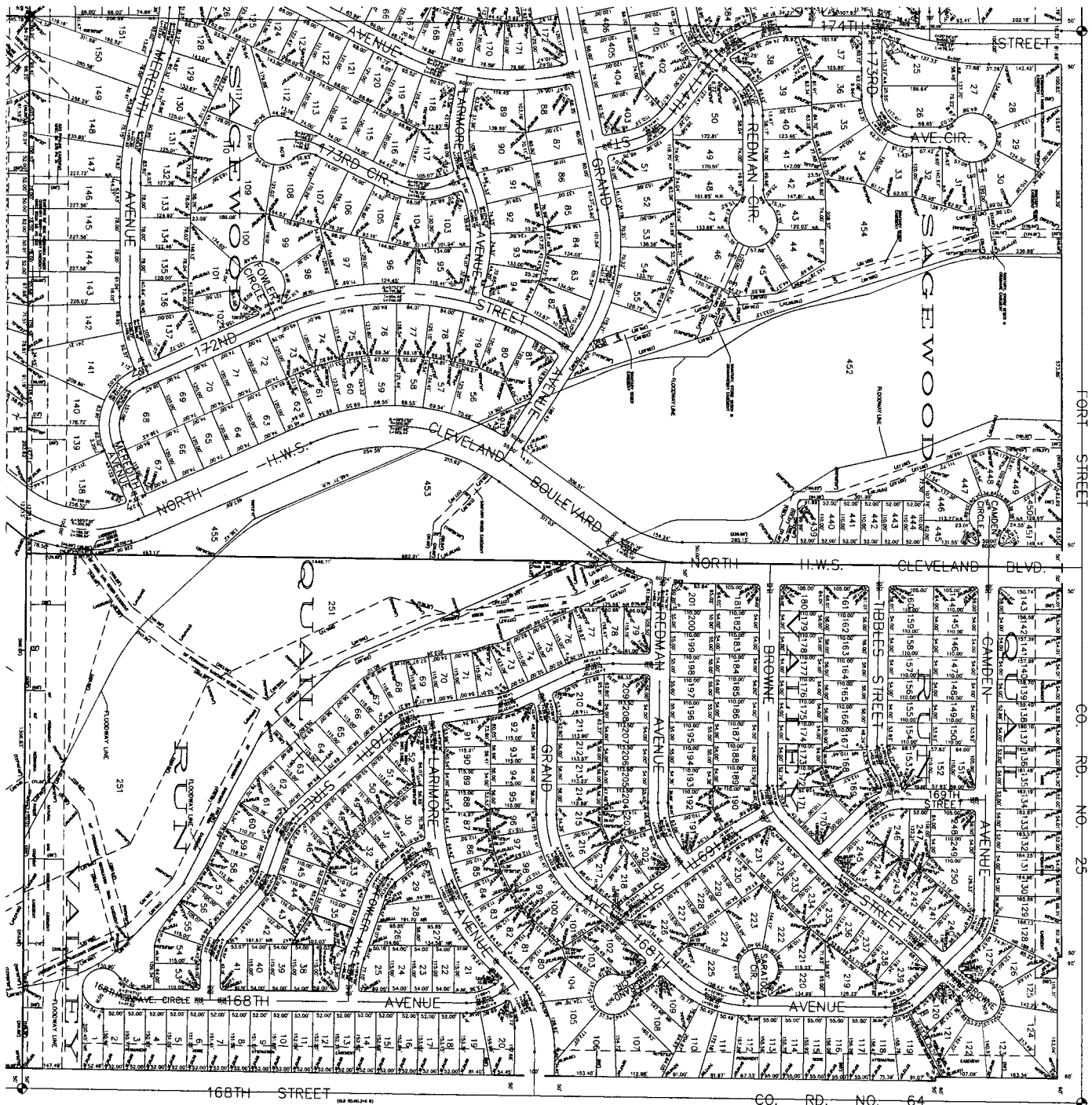
DRAWN BY:	DATE	COMMENTS
B.B.	05/23/1994	REDRAW
R.J.B.	07/17/2005	SAGEWOOD (LOTS 1-436, D.L. A-8)
S.A.C.	02/14/2006	SAGEWOOD REPLAT ONE (LOTS 1-43)
J.L.B.	05/17/2007	SAGEWOOD REPLAT TWO (LOTS 1-2)

SCALE: 1" = 100'

NORTH

INFORMATION ON THIS SHEET SHOULD BE VIEWED WITH THE FINAL PLAN BEFORE BEING USED.

N.E. 1/4 SEC. 04-15-11



DOUGLAS COUNTY ENGINEER
 156TH & W. MAPLE RD. OMAHA NE. 68116

DRAWN BY:	DATE:	COMMENTS:
BLC	10/17/2008	QUAIL RUN VALLEY REPLAT 1 (L 1-2)

SCALE: 1" = 100' NORTH

INFORMATION ON THIS SHEET SHOULD BE VERIFIED WITH THE FINAL PLAT BEFORE BEING USED.