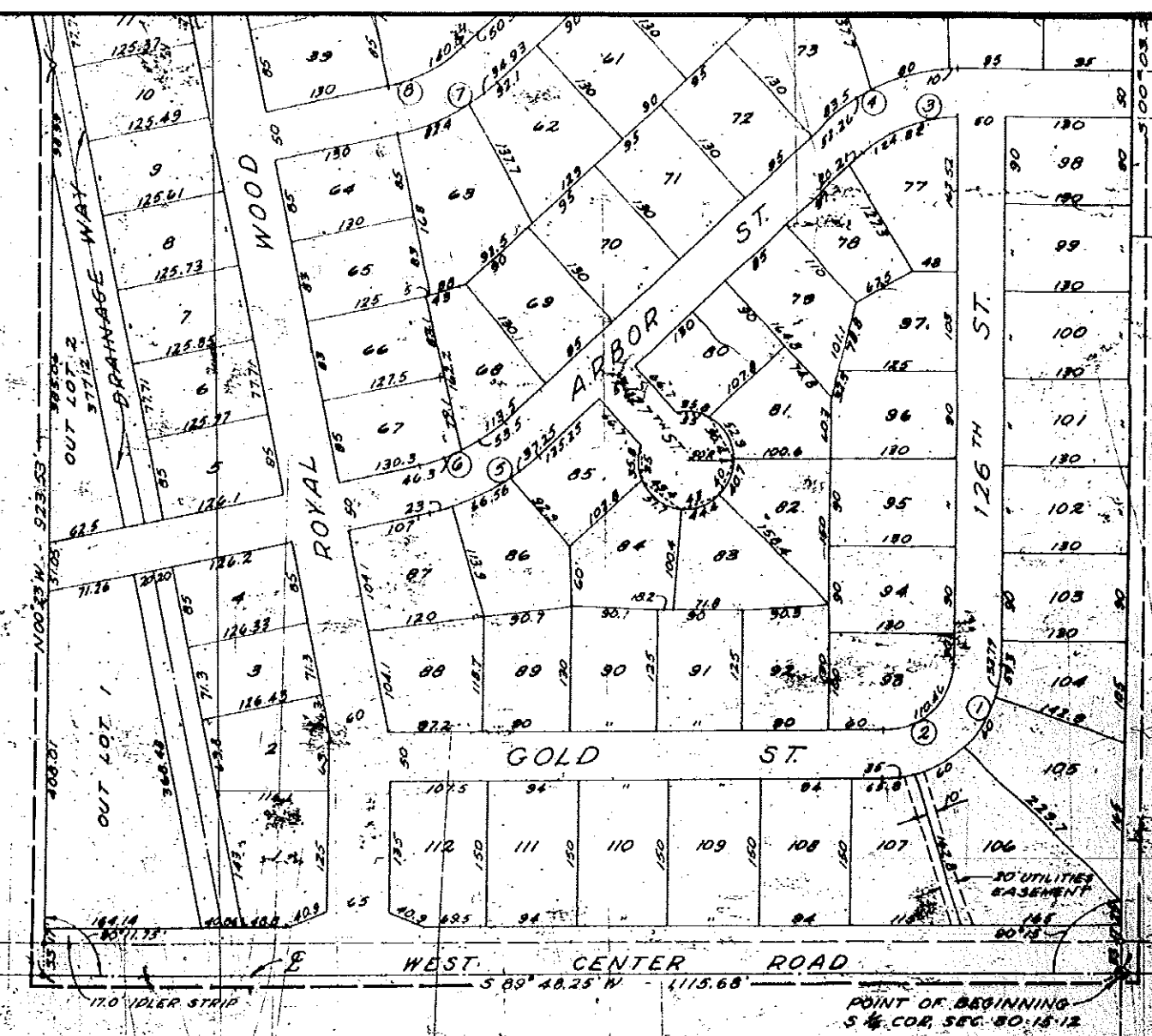


DETAIL A

Δ	T	R	D	L
1	89.95'	120.0'	120.32'	47.540°
2	89.45'	20.2'	70.52'	81.247°
3	43.08'	55.0'	139.09'	41.193°
4	43.09'	74.77'	109.09'	30.301°
5	30.58'	65.0'	234.52'	24.431°
6	30.58'	34.14'	104.52'	31.051°
7	30.59'	16.13'	216.95'	26.410°
8	30.59'	46.27'	106.95'	34.319°
9	46.49'	110.0'	254.09'	22.549°
10	46.49'	88.35'	204.09'	28.074°
11	30.59'	70.0'	252.56'	22.668°
12	30.59'	56.14'	202.56'	28.286°
13	43.15'	90.0'	201.80'	28.592°
14	43.15'	99.62'	251.80'	22.754°
				150.07°

DETAILED CURVE DATA



UNPLATTED

LUTHERAN CHURCH, MISSOURI SYNOD
NORTHERN NEBR. DIST.

BED AIR
TENTATIVE

SECTION 1108
PAGE 129

OMAHA CITY COUNCIL ACCEPTANCE

THIS PLAT OF ROYAL WOOD ESTATES (LOTS 1 THRU 112 INCL, OUT LOT 1 AND OUT LOT 2) WAS APPROVED BY THE CITY COUNCIL OF OMAHA, ON THIS 20 DAY OF SEPTEMBER AD. 1960.

TEST:

W. J. ...
CITY CLERK

W. J. ...
PRESIDENT OF COUNCIL

Wm. ...
MAYOR

APPROVAL OF OMAHA CITY PLANNING BOARD

THIS PLAT OF ROYAL WOOD ESTATES (LOTS 1 THRU 112 INCL, OUT LOT 1 AND OUT LOT 2) WAS APPROVED BY THE CITY PLANNING BOARD, ON THIS 11 DAY OF Aug AD. 1960.

Walter ...
CHAIRMAN OF THE CITY PLANNING BOARD

APPROVAL OF CITY ENGINEER OF OMAHA

I HEREBY APPROVE OF THIS PLAT OF ROYAL WOOD ESTATES (LOTS 1 THRU 112 INCL, OUT LOT 1 AND OUT LOT 2) THIS 22 DAY OF August AD. 1960.

A. P. ...
CITY ENGINEER

SURVEYOR'S CERTIFICATE

WE HEREBY CERTIFY THAT WE HAVE ACCURATELY SURVEYED AND STAKED WITH IRON PINS ALL CORNERS OF ALL LOTS, AVENUES, STREETS, ANGLE POINTS AND ENDS OF ALL CURVES IN ROYAL WOOD ESTATES, SAID ADDITION IS LOCATED IN THE SW 1/4 OF SEC. 30, T-16-N, R-12-E OF THE 6TH P.M., DOUGLAS COUNTY, NEBRASKA, MORE PARTICULARLY DESCRIBED AS FOLLOWS:
BEGINNING AT THE S 1/4 CORNER OF SECTION 30-15-12;
THENCE S 89° 48' 25" W ALONG THE SOUTH LINE OF SAID SECTION 30, A DISTANCE OF 1115.68 FT; THENCE N 00° 23' W A DISTANCE OF 923.53 FT; THENCE N 12° 02' 25" W A DISTANCE OF 373.47 FT; THENCE N 77° 51' 5.6" E A DISTANCE OF 204.8 FT; THENCE S 12° 08.5' E A DISTANCE OF 0.69 FT; THENCE N 77° 51' 5.6" E A DISTANCE OF 180.0 FT; THENCE N 12° 08.5' W A DISTANCE OF 79.31 FT; THENCE N 67° 21.5' E A DISTANCE OF 136.49 FT; THENCE N 46° 53.5' E A DISTANCE OF 526.28 FT; THENCE S 89° 55' 25.6" E A DISTANCE OF 380.6 FT; TO THE EAST LINE OF THE SW 1/4, THENCE S 00° 03' 25" W ALONG SAID EAST LINE OF THE SW 1/4 A DISTANCE OF 1845.0 FT. TO THE POINT OF BEGINNING.

DATE AUGUST 18, 1960

GOLBENON ...
REGISTERED LAND SURVEYOR

