

HARNEY PARKWAY

HARNEY

STADDS

ROAD

BRENTWOOD

FIELDCREST

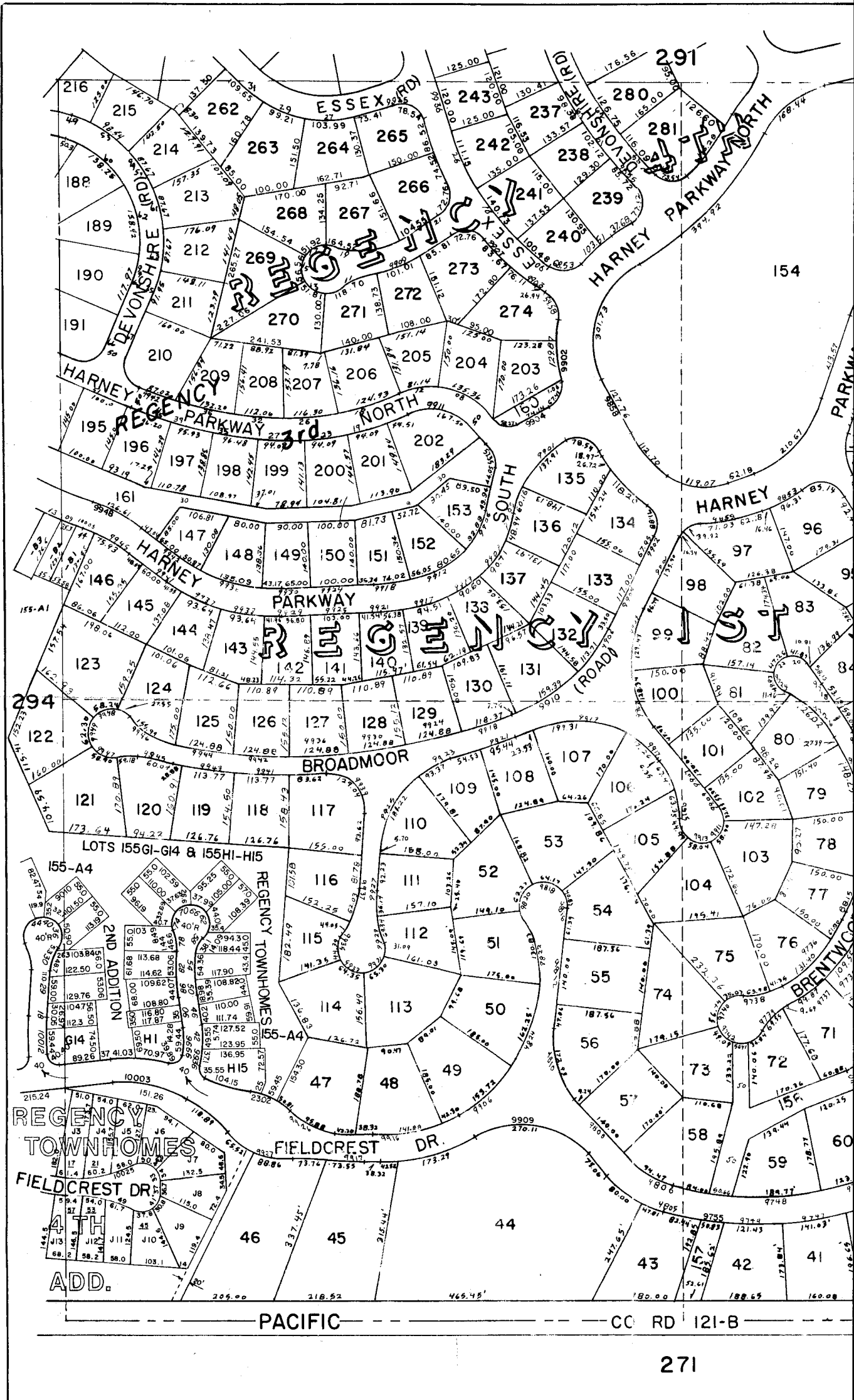
ST.

CORD 28-D

96TH

CORD 121-B

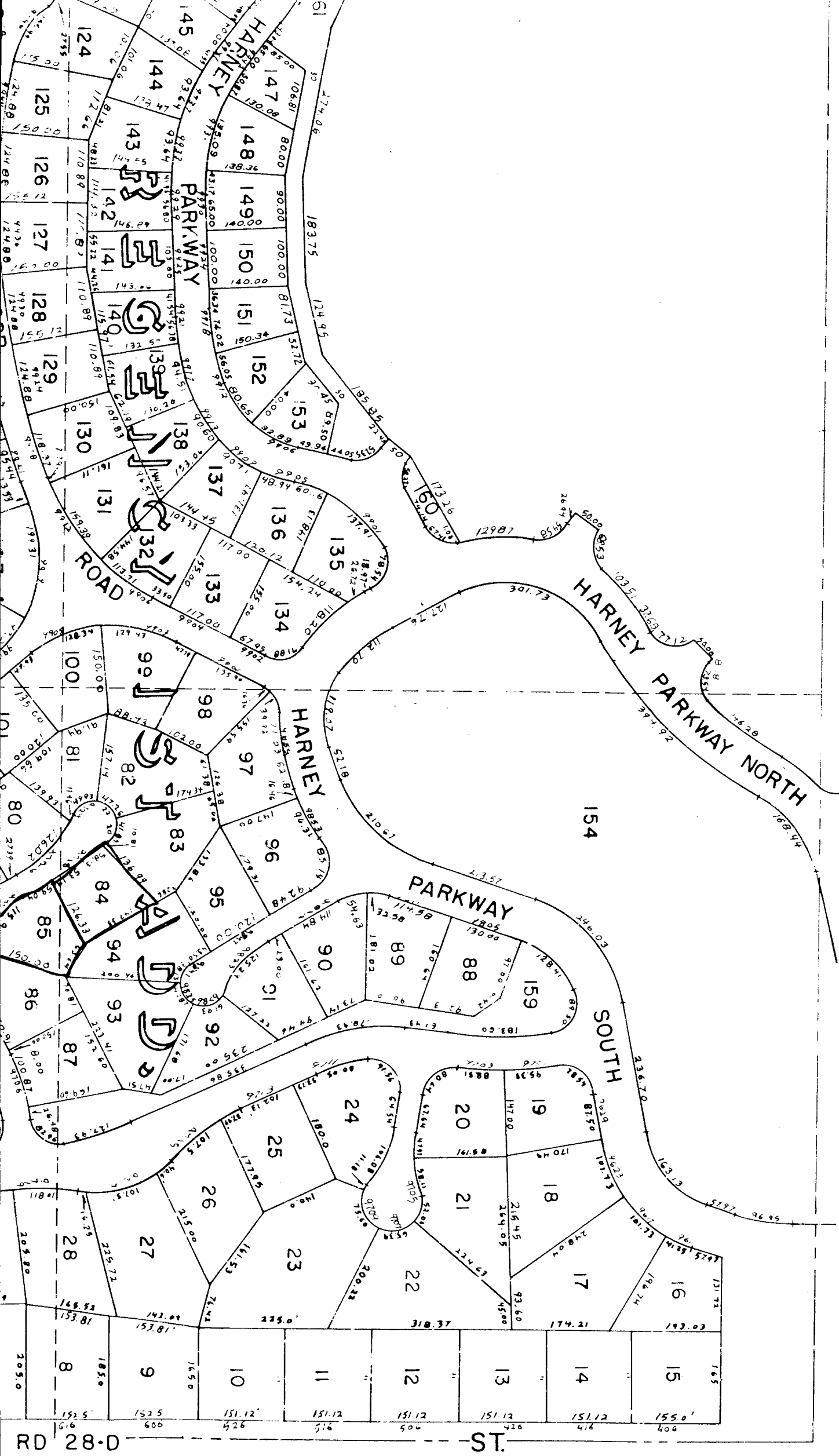
ST.

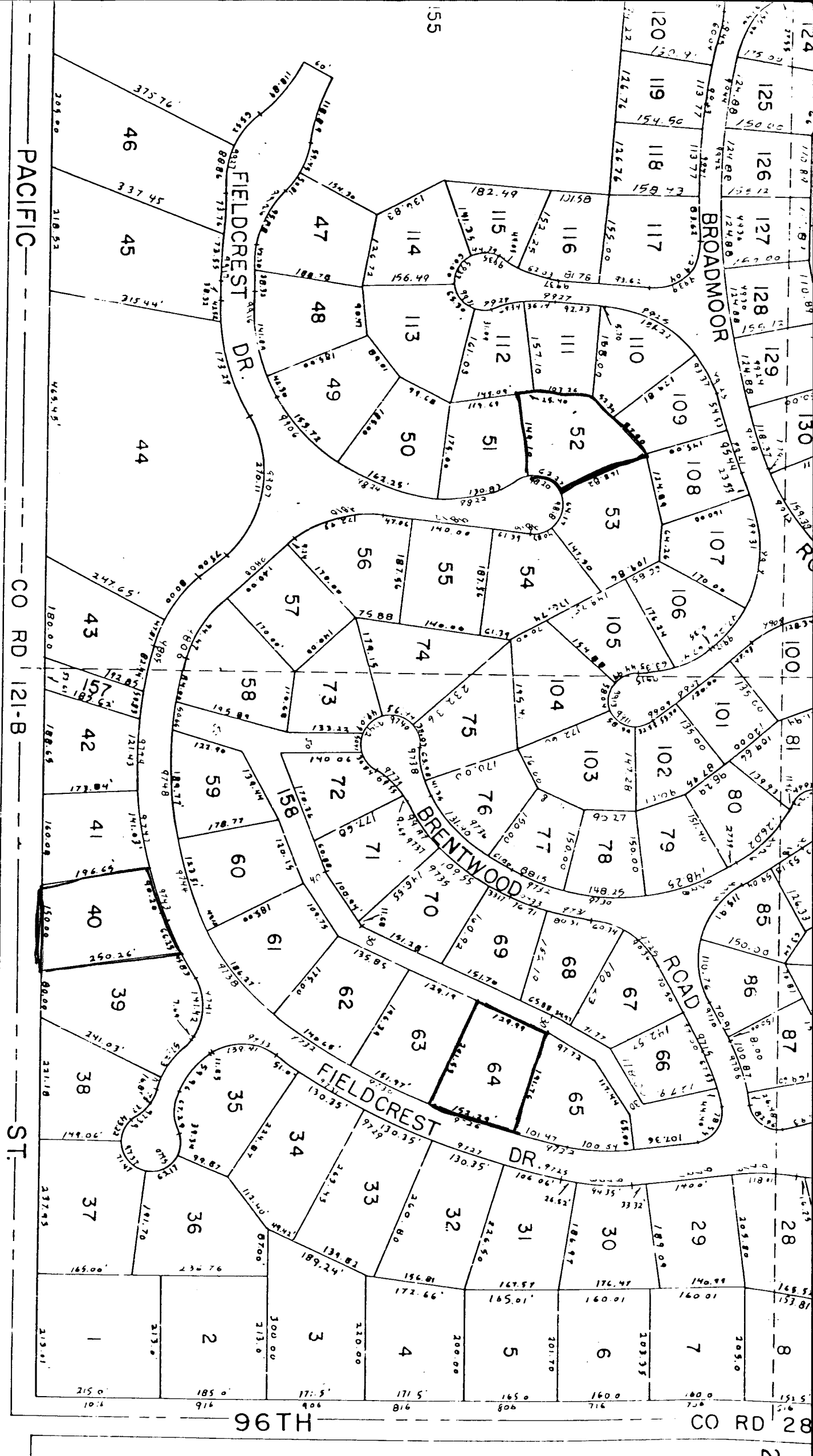


291

SE 1/4 SEC. 21-15-12

293





PACIFIC

CO RD 121-B

ST

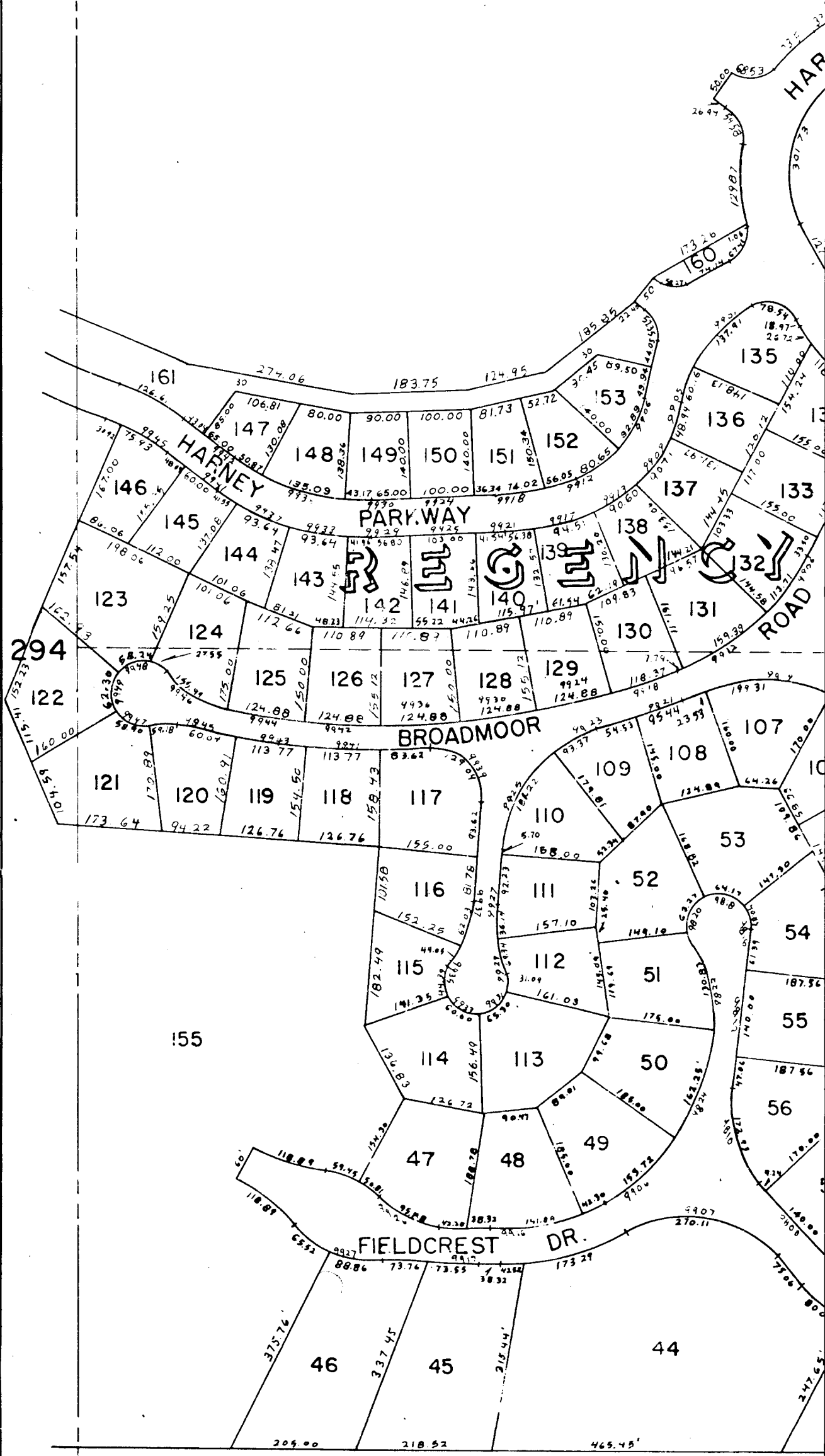
HT 96

RD 2

216

271

- 1: 213.0
- 2: 185.0
- 3: 171.5
- 4: 171.5
- 5: 165.0
- 6: 160.0
- 7: 140.0
- 8: 205.0
- 9: 185.0
- 10: 105.0
- 11: 105.0
- 12: 105.0
- 13: 105.0
- 14: 105.0
- 15: 105.0
- 16: 105.0
- 17: 105.0
- 18: 105.0
- 19: 105.0
- 20: 105.0
- 21: 105.0
- 22: 105.0
- 23: 105.0
- 24: 105.0
- 25: 105.0
- 26: 105.0
- 27: 105.0
- 28: 105.0
- 29: 105.0
- 30: 105.0
- 31: 105.0
- 32: 105.0
- 33: 105.0
- 34: 105.0
- 35: 105.0
- 36: 105.0
- 37: 105.0
- 38: 105.0
- 39: 105.0
- 40: 105.0
- 41: 105.0
- 42: 105.0
- 43: 105.0
- 44: 105.0
- 45: 105.0
- 46: 105.0
- 47: 105.0
- 48: 105.0
- 49: 105.0
- 50: 105.0
- 51: 105.0
- 52: 105.0
- 53: 105.0
- 54: 105.0
- 55: 105.0
- 56: 105.0
- 57: 105.0
- 58: 105.0
- 59: 105.0
- 60: 105.0
- 61: 105.0
- 62: 105.0
- 63: 105.0
- 64: 105.0
- 65: 105.0
- 66: 105.0
- 67: 105.0
- 68: 105.0
- 69: 105.0
- 70: 105.0
- 71: 105.0
- 72: 105.0
- 73: 105.0
- 74: 105.0
- 75: 105.0
- 76: 105.0
- 77: 105.0
- 78: 105.0
- 79: 105.0
- 80: 105.0
- 81: 105.0
- 82: 105.0
- 83: 105.0
- 84: 105.0
- 85: 105.0
- 86: 105.0
- 87: 105.0
- 88: 105.0
- 89: 105.0
- 90: 105.0
- 91: 105.0
- 92: 105.0
- 93: 105.0
- 94: 105.0
- 95: 105.0
- 96: 105.0
- 97: 105.0
- 98: 105.0
- 99: 105.0
- 100: 105.0
- 101: 105.0
- 102: 105.0
- 103: 105.0
- 104: 105.0
- 105: 105.0
- 106: 105.0
- 107: 105.0
- 108: 105.0
- 109: 105.0
- 110: 105.0
- 111: 105.0
- 112: 105.0
- 113: 105.0
- 114: 105.0
- 115: 105.0
- 116: 105.0
- 117: 105.0
- 118: 105.0
- 119: 105.0
- 120: 105.0
- 121: 105.0
- 122: 105.0
- 123: 105.0
- 124: 105.0
- 125: 105.0
- 126: 105.0
- 127: 105.0
- 128: 105.0
- 129: 105.0

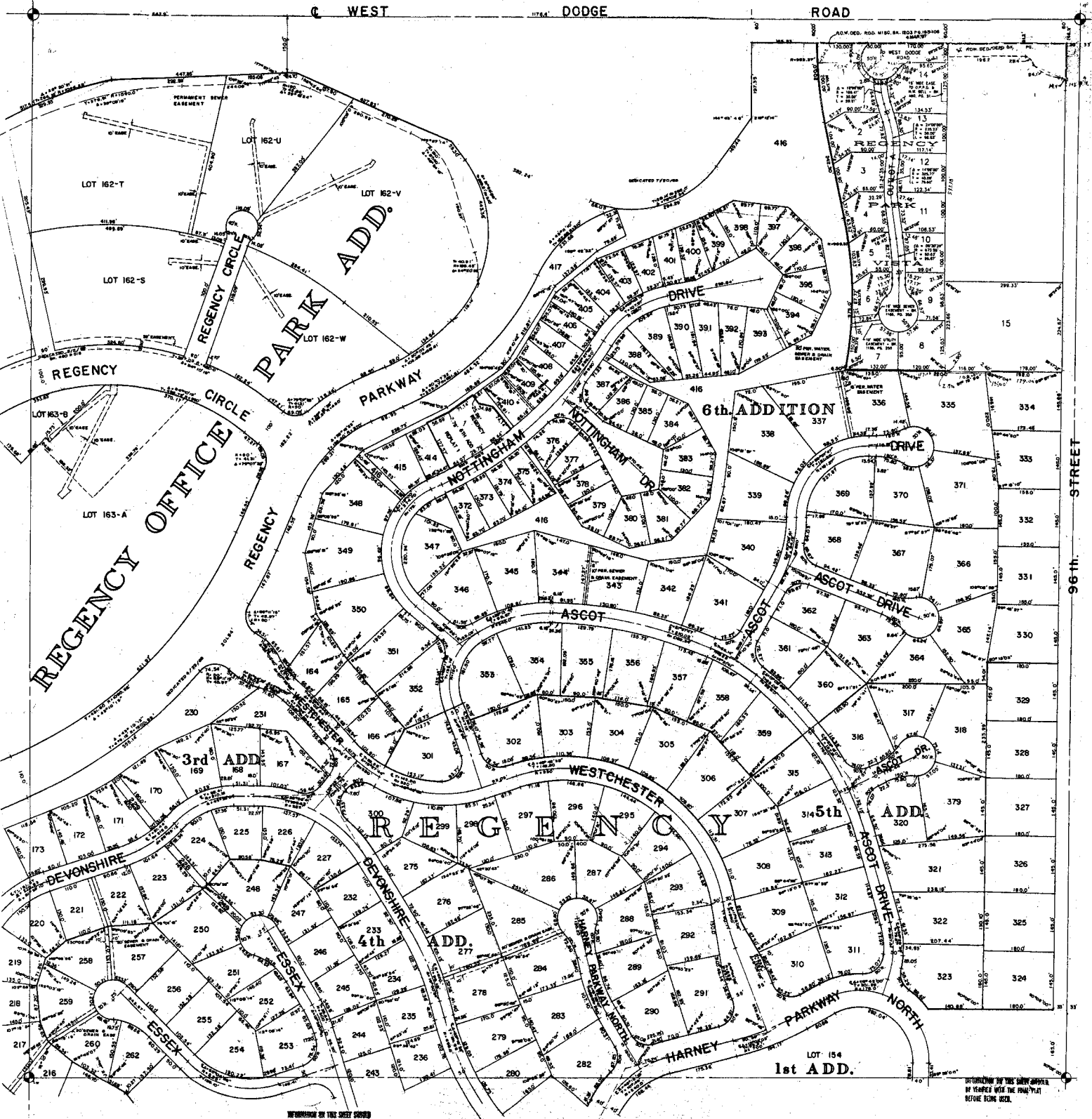


PACIFIC

C

OLD DODGE ROAD VACATED
BY COUNTY BOARD 2/21/57 RES. 1751

10th ADDITION



INFORMATION ON THIS SHEET SHOULD
BE VIEWED WITH THE FINAL PLAT
BEFORE BEING USED.

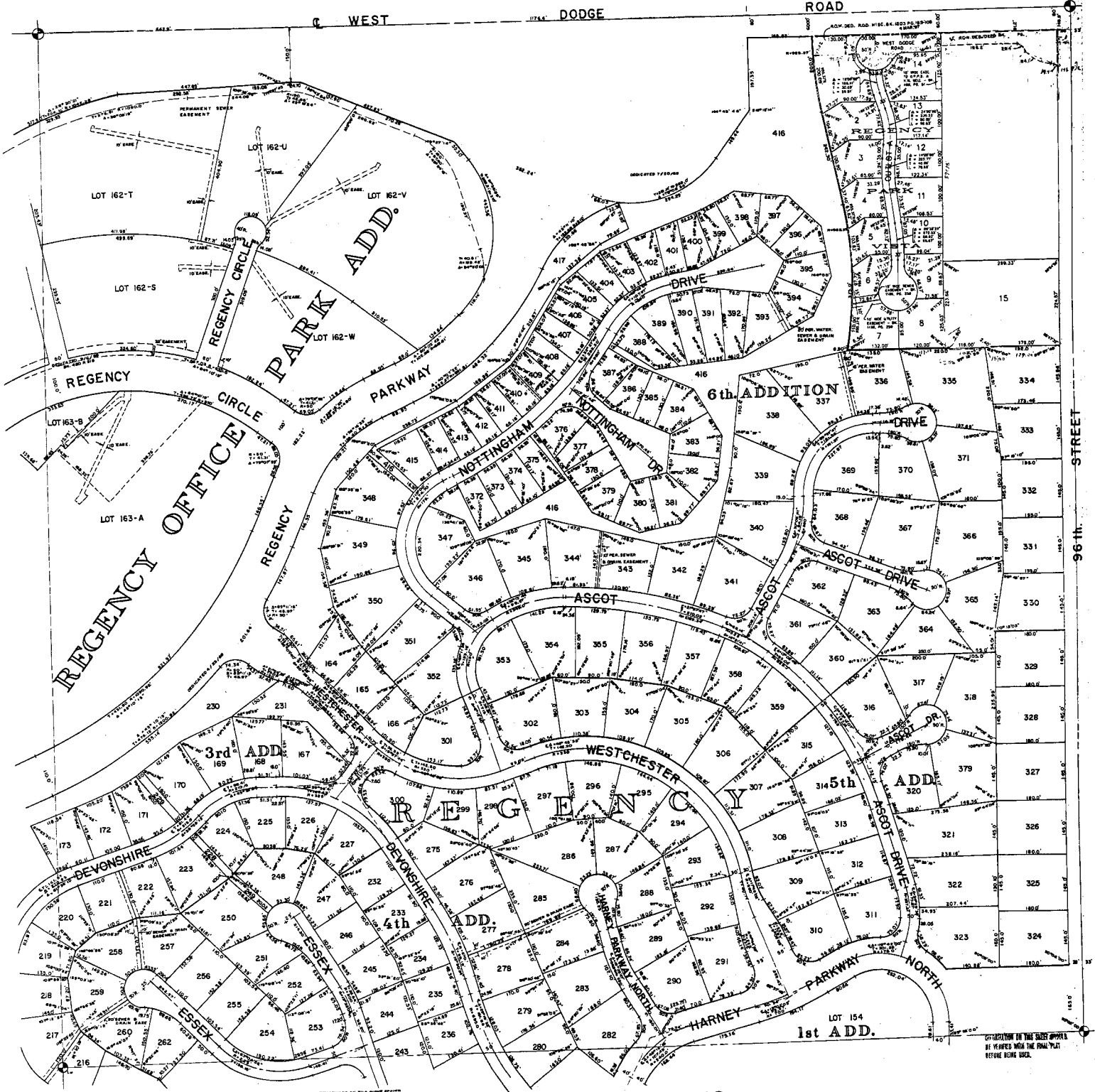
INFORMATION ON THIS SHEET SHOULD
BE VIEWED WITH THE FINAL PLAT
BEFORE BEING USED.

N.E. 1/4 SEC 21-15-12

96th STREET

Now 510 Rd

NOTE: OLD DODGE ROAD VACATED BY COUNTY BOARD 2/27/07 RES. 1751



CONFORMANCE OF THIS SHEET SHOULD BE VERIFIED WITH THE FINAL PLAT

N.E. 1/4 SEC. 21-15-12

CONFORMANCE OF THIS SHEET SHOULD BE VERIFIED WITH THE FINAL PLAT BEFORE BEING BUILT