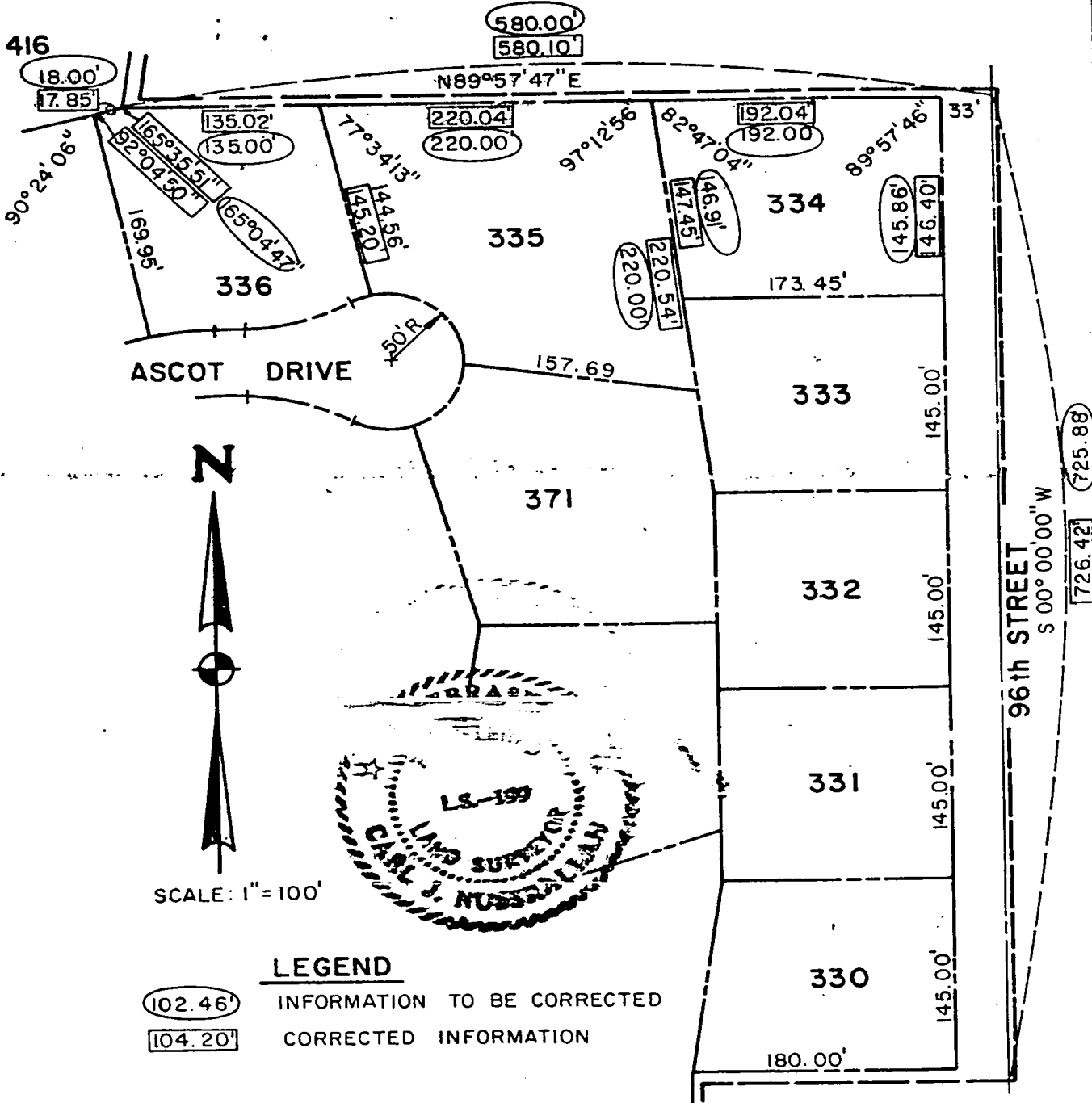


AFFIDAVIT

REGENCY 6th ADDITION

This is a correction to lots 334, 335 336 and 416 of said Regency 6th Addition and to the exterior boundary of said Regency 6th Addition.



LEGEND

- 102.46' INFORMATION TO BE CORRECTED
- 104.20' CORRECTED INFORMATION

This is to certify that the distances & angles encircled on this plat were shown in error on the original platting of Regency 6th Addition & I further certify that the distances & angles enclosed within a rectangle as shown on this plat were true, correct & originally intended distances & angles.

Dec 1, 1978
DATE

Carl J. Nussrallah
CARL J. NUSSRALLAH L.S. 199

SHEET 1/1
DATE 12-1-78
K.M.A. NO. B751041

CORRECTION PLAT

KM KIRKHAM, MICHAEL AND ASSOCIATES
ARCHITECTS ENGINEERS PLANNERS

85-636
85-637 etc
Compd. [initials]
Index [initials]
Fee 400

Book 607
Page 94
of 91

RECEIVED
1978 DEC -1 PM 3:28

[Handwritten signature]