

(Note: All Curve Data is based on the Arc Definition)

REGENCY 1 ST A

A SUBDIVISION LOCATED IN PART OF DOUGLAS COUNTY,

1. Δ = 27°44'46" D = 12°40'11" R = 452.71' T = 111.63' L = 218.93'	2. Δ = 3°02'12" D = 15°06'06" R = 379.35' T = 152.30' L = 200.00'	3. Δ = 77°32'52" D = 24°54'40" R = 230.00' T = 184.29' L = 316.53'	4. Δ = 31°56'19" D = 25°36'52" R = 200.00' T = 57.04' L = 111.14'
5. Δ = 35°56'49" D = 9°56'12" R = 737.41' T = 241.53' L = 466.93'	6. Δ = 33°22'13" D = 21°10'54" R = 470.35' T = 141.72' L = 275.31'	7. Δ = 26°13'33" D = 4°33'16" R = 1355.58' T = 283.39' L = 556.74'	8. Δ = 19°29'03" D = 19°26'32" R = 378.49' T = 55.91' L = 110.75'
9. Δ = 17°57'43" D = 8°21'00" R = 612.99' T = 96.84' L = 192.10'	10. Δ = 13°11'54" D = 20°53'38" R = 234.22' T = 81.05' L = 141.25'	11. Δ = 19°42'31" D = 10°06'27" R = 365.00' T = 98.14' L = 194.35'	12. Δ = 13°16'58" D = 31°13'37" R = 184.90' T = 34.87' L = 106.24'
13. Δ = 23°41'23" D = 37°39'20" R = 152.16' T = 37.53' L = 73.33'	14. Δ = 19°19'02" D = 14°04'12" R = 148.60' T = 62.89' L = 150.85'	15. Δ = 56°54'50" D = 14°04'12" R = 407.22' T = 220.71' L = 404.51'	16. Δ = 21°43'50" D = 18°06'35" R = 305.15' T = 66.85' L = 131.62'
17. Δ = 35°56'22" D = 14°52'55" R = 325.02' T = 124.93' L = 241.72'	18. Δ = 53°25'02" D = 22°16'52" R = 200.00' T = 111.82' L = 203.91'	19. Δ = 59°59'06" D = 29°23'37" R = 195.00' T = 112.55' L = 204.15'	20. Δ = 53°38'49" D = 21°37'16" R = 265.00' T = 434.00' L = 248.12'
21. Δ = 51°18'19" D = 33°01'25" R = 172.98' T = 83.02' L = 184.89'	22. Δ = 26°54'16" D = 20°27'46" R = 240.00' T = 64.97' L = 131.48'	23. Δ = 89°43'59" D = 24°37'35" R = 232.66' T = 231.88' L = 364.38'	24. Δ = 33°08'31" D = 8°54'61" R = 642.75' T = 191.26' L = 371.79'
25. Δ = 46°55'16" D = 23°52'24" R = 240.00' T = 107.49' L = 202.13'	26. Δ = 15°02'03" D = 8°11'06" R = 700.00' T = 92.37' L = 183.48'	27. Δ = 119°42'00" D = 12°44'26" R = 175.00' T = 301.28' L = 365.60'	28. Δ = 20°11'59" D = 18°11'21" R = 315.00' T = 56.11' L = 111.05'
29. Δ = 26°33'14" D = 30°14'40" R = 189.44' T = 44.72' L = 87.83'	30. Δ = 43°07'00" D = 14°02'15" R = 403.65' T = 156.66' L = 272.20'	31. Δ = 13°01'54" D = 40°59'33" R = 1379.50' T = 157.44' L = 313.53'	32. Δ = 18°34'16" D = 4°10'17" R = 1373.50' T = 224.56' L = 445.19'
33. Δ = 14°36'17" D = 10°43'36" R = 534.14' T = 68.45' L = 136.15'	34. Δ = 24°41'34" D = 17°27'49" R = 328.09' T = 71.81' L = 141.40'	35. Δ = 47°30'40" D = 22°28'03" R = 255.00' T = 112.23' L = 211.15'	36. Δ = 54°09'29" D = 26°49'30" R = 211.50' T = 109.20' L = 201.89'
37. Δ = 15°52'27" D = 14°09'50" R = 405.00' T = 70.95' L = 140.48'	38. Δ = 39°46'55" D = 15°54'56" R = 360.00' T = 130.26' L = 248.96'	39. Δ = 18°51'53" D = 18°02'39" R = 354.54' T = 12.90' L = 116.73'	40. Δ = 25°31'53" D = 8°21'52" R = 685.00' T = 155.31' L = 303.84'
41. Δ = 21°12'01" D = 6°45'00" R = 848.83' T = 158.86' L = 314.05'	42. Δ = 39°20'18" D = 9°02'00" R = 1145.92' T = 409.60' L = 788.77'	43. Δ = 13°07'36" D = 10°54'49" R = 525.00' T = 151.34' L = 249.68'	44. Δ = 13°39'09" D = 3°05'39" R = 237.31' T = 28.02' L = 55.79'

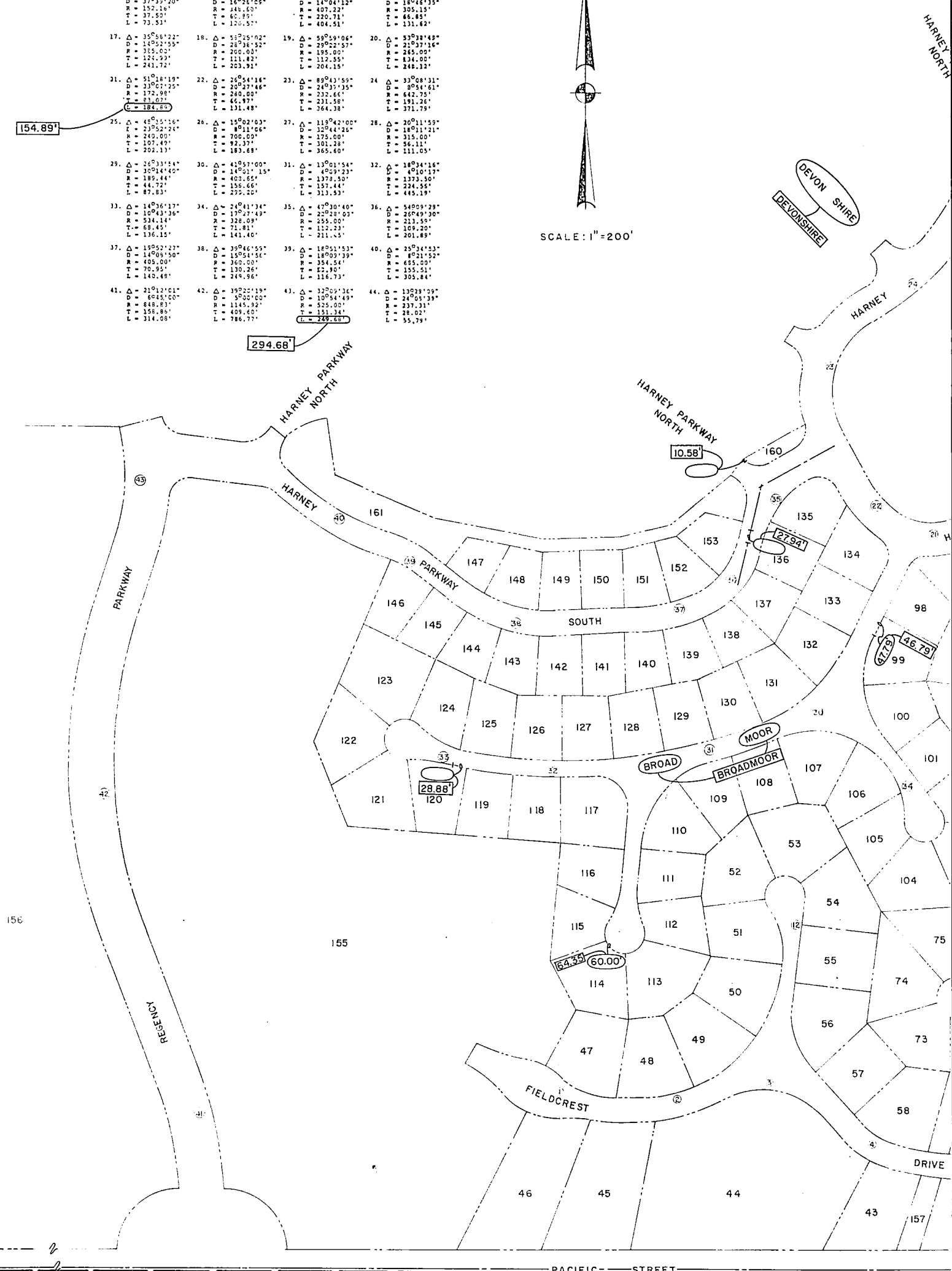
23° 36' 57"

154.89'

294.68'



SCALE: 1"=200'



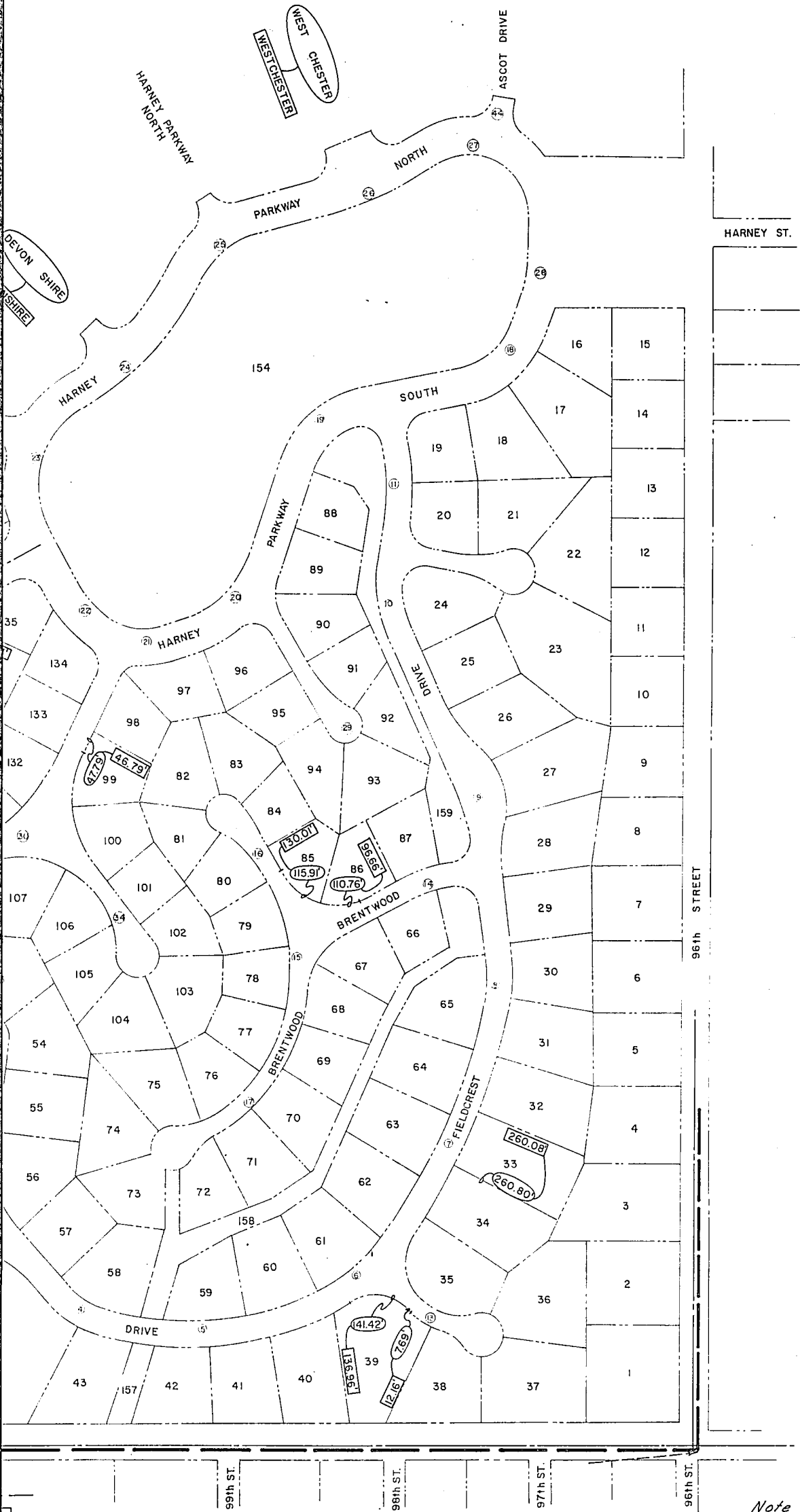
PACIFIC STREET

S 89° 29' 42" E
4672.47'

S 89° 29' 42" W

CY 1 ST ADDITION

ED IN PART OF SECTION 21, T15N, R12E
S COUNTY, NEBRASKA



Note:
All distances shown on curves
are arc distances.

CORRECTION PLAT

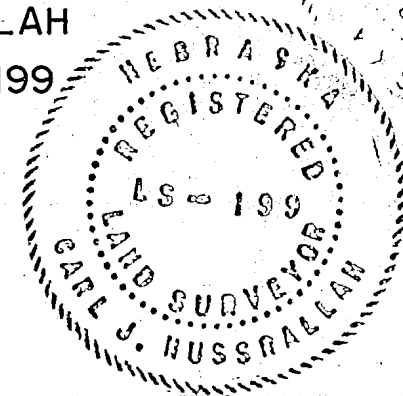
AFFIDAVIT OF CORRECTION

This is to certify that the distances, angles and street names encircled on this plat were omitted or shown in error on the original platting of Regency 1st Addition and I further certify that the distances, angles and street names enclosed within a rectangle as shown on the plat are the true, correct and the originally intended distances, angles and street names.

DATE March 14, 1969

Carl J. Nussrallah
CARL J. NUSSRALLAH

L.S. # 199



LEGEND

10.00'

Information To Be Corrected

11.00'

Corrected Information

BOOK 474 PAGE 497

13
ENTERED IN NUMERICAL INDEX AND RECORDED IN THE REGISTER OF DEEDS OFFICE IN DOUGLAS COUNTY, NEBRASKA,
14 DAY OF March 1969 AT 3:34 P.M. C. HAROLD OSTLER, REGISTER OF DEEDS 8.50