

#444

RAMBLEWOOD REPLAT II

TO THE PUBLIC

Lots 331 thru 344 incl., lots 347 thru 349 incl.,  
lots 362 thru 378 incl., lots 386 thru 388 incl.,  
lots 393 thru 421 incl., lots 423 thru 433 incl.,  
lots 436 thru 506 inclusive.

Being a replat of various lots in Ramblewood.  
(See original plat)

Deeds: 83/440  
Mortgage: 83/447

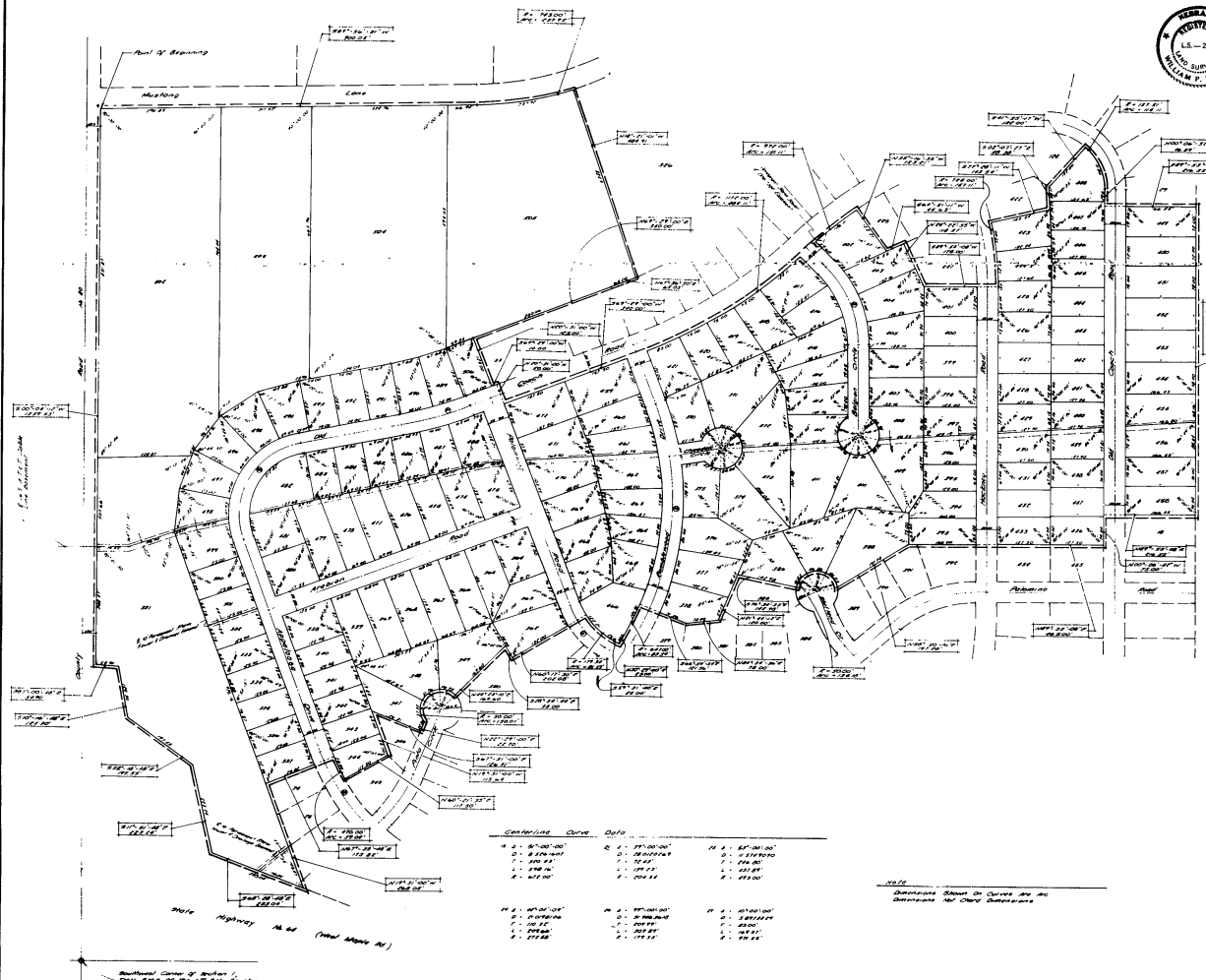
44

ENTERED IN NUMERICAL INDEX AND RECORDED IN THE REGISTER OF DEEDS OFFICE IN DOUGLAS COUNTY, NEBRASKA  
20 DAY OF Jan 1976 AT 4:07 P.M. C. HAROLD OSTLER, REGISTER OF DEEDS

80.50

# RAMBLEWOOD REPLAT II

Lot 101 thru 104, inclusive; Lot 105 thru 108, inclusive; Lot 109 thru 112, inclusive; Lot 113 thru 116, inclusive; Lot 117 thru 120, inclusive; Lot 121 thru 124, inclusive; Lot 125 thru 128, inclusive; Lot 129 thru 132, inclusive; Lot 133 thru 136, inclusive; Lot 137 thru 140, inclusive; Lot 141 thru 144, inclusive; Lot 145 thru 148, inclusive; Lot 149 thru 152, inclusive; Lot 153 thru 156, inclusive; Lot 157 thru 160, inclusive; Lot 161 thru 164, inclusive; Lot 165 thru 168, inclusive; Lot 169 thru 172, inclusive; Lot 173 thru 176, inclusive; Lot 177 thru 180, inclusive; Lot 181 thru 184, inclusive; Lot 185 thru 188, inclusive; Lot 189 thru 192, inclusive; Lot 193 thru 196, inclusive; Lot 197 thru 200, inclusive; Lot 201 thru 204, inclusive; Lot 205 thru 208, inclusive; Lot 209 thru 212, inclusive; Lot 213 thru 216, inclusive; Lot 217 thru 220, inclusive; Lot 221 thru 224, inclusive; Lot 225 thru 228, inclusive; Lot 229 thru 232, inclusive; Lot 233 thru 236, inclusive; Lot 237 thru 240, inclusive; Lot 241 thru 244, inclusive; Lot 245 thru 248, inclusive; Lot 249 thru 252, inclusive; Lot 253 thru 256, inclusive; Lot 257 thru 260, inclusive; Lot 261 thru 264, inclusive; Lot 265 thru 268, inclusive; Lot 269 thru 272, inclusive; Lot 273 thru 276, inclusive; Lot 277 thru 280, inclusive; Lot 281 thru 284, inclusive; Lot 285 thru 288, inclusive; Lot 289 thru 292, inclusive; Lot 293 thru 296, inclusive; Lot 297 thru 300, inclusive; Lot 301 thru 304, inclusive; Lot 305 thru 308, inclusive; Lot 309 thru 312, inclusive; Lot 313 thru 316, inclusive; Lot 317 thru 320, inclusive; Lot 321 thru 324, inclusive; Lot 325 thru 328, inclusive; Lot 329 thru 332, inclusive; Lot 333 thru 336, inclusive; Lot 337 thru 340, inclusive; Lot 341 thru 344, inclusive; Lot 345 thru 348, inclusive; Lot 349 thru 352, inclusive; Lot 353 thru 356, inclusive; Lot 357 thru 360, inclusive; Lot 361 thru 364, inclusive; Lot 365 thru 368, inclusive; Lot 369 thru 372, inclusive; Lot 373 thru 376, inclusive; Lot 377 thru 380, inclusive; Lot 381 thru 384, inclusive; Lot 385 thru 388, inclusive; Lot 389 thru 392, inclusive; Lot 393 thru 396, inclusive; Lot 397 thru 400, inclusive; Lot 401 thru 404, inclusive; Lot 405 thru 408, inclusive; Lot 409 thru 412, inclusive; Lot 413 thru 416, inclusive; Lot 417 thru 420, inclusive; Lot 421 thru 424, inclusive; Lot 425 thru 428, inclusive; Lot 429 thru 432, inclusive; Lot 433 thru 436, inclusive; Lot 437 thru 440, inclusive; Lot 441 thru 444, inclusive; Lot 445 thru 448, inclusive; Lot 449 thru 452, inclusive; Lot 453 thru 456, inclusive; Lot 457 thru 460, inclusive; Lot 461 thru 464, inclusive; Lot 465 thru 468, inclusive; Lot 469 thru 472, inclusive; Lot 473 thru 476, inclusive; Lot 477 thru 480, inclusive; Lot 481 thru 484, inclusive; Lot 485 thru 488, inclusive; Lot 489 thru 492, inclusive; Lot 493 thru 496, inclusive; Lot 497 thru 500, inclusive; Lot 501 thru 504, inclusive; Lot 505 thru 508, inclusive; Lot 509 thru 512, inclusive; Lot 513 thru 516, inclusive; Lot 517 thru 520, inclusive; Lot 521 thru 524, inclusive; Lot 525 thru 528, inclusive; Lot 529 thru 532, inclusive; Lot 533 thru 536, inclusive; Lot 537 thru 540, inclusive; Lot 541 thru 544, inclusive; Lot 545 thru 548, inclusive; Lot 549 thru 552, inclusive; Lot 553 thru 556, inclusive; Lot 557 thru 560, inclusive; Lot 561 thru 564, inclusive; Lot 565 thru 568, inclusive; Lot 569 thru 572, inclusive; Lot 573 thru 576, inclusive; Lot 577 thru 580, inclusive; Lot 581 thru 584, inclusive; Lot 585 thru 588, inclusive; Lot 589 thru 592, inclusive; Lot 593 thru 596, inclusive; Lot 597 thru 600, inclusive; Lot 601 thru 604, inclusive; Lot 605 thru 608, inclusive; Lot 609 thru 612, inclusive; Lot 613 thru 616, inclusive; Lot 617 thru 620, inclusive; Lot 621 thru 624, inclusive; Lot 625 thru 628, inclusive; Lot 629 thru 632, inclusive; Lot 633 thru 636, inclusive; Lot 637 thru 640, inclusive; Lot 641 thru 644, inclusive; Lot 645 thru 648, inclusive; Lot 649 thru 652, inclusive; Lot 653 thru 656, inclusive; Lot 657 thru 660, inclusive; Lot 661 thru 664, inclusive; Lot 665 thru 668, inclusive; Lot 669 thru 672, inclusive; Lot 673 thru 676, inclusive; Lot 677 thru 680, inclusive; Lot 681 thru 684, inclusive; Lot 685 thru 688, inclusive; Lot 689 thru 692, inclusive; Lot 693 thru 696, inclusive; Lot 697 thru 700, inclusive; Lot 701 thru 704, inclusive; Lot 705 thru 708, inclusive; Lot 709 thru 712, inclusive; Lot 713 thru 716, inclusive; Lot 717 thru 720, inclusive; Lot 721 thru 724, inclusive; Lot 725 thru 728, inclusive; Lot 729 thru 732, inclusive; Lot 733 thru 736, inclusive; Lot 737 thru 740, inclusive; Lot 741 thru 744, inclusive; Lot 745 thru 748, inclusive; Lot 749 thru 752, inclusive; Lot 753 thru 756, inclusive; Lot 757 thru 760, inclusive; Lot 761 thru 764, inclusive; Lot 765 thru 768, inclusive; Lot 769 thru 772, inclusive; Lot 773 thru 776, inclusive; Lot 777 thru 780, inclusive; Lot 781 thru 784, inclusive; Lot 785 thru 788, inclusive; Lot 789 thru 792, inclusive; Lot 793 thru 796, inclusive; Lot 797 thru 800, inclusive; Lot 801 thru 804, inclusive; Lot 805 thru 808, inclusive; Lot 809 thru 812, inclusive; Lot 813 thru 816, inclusive; Lot 817 thru 820, inclusive; Lot 821 thru 824, inclusive; Lot 825 thru 828, inclusive; Lot 829 thru 832, inclusive; Lot 833 thru 836, inclusive; Lot 837 thru 840, inclusive; Lot 841 thru 844, inclusive; Lot 845 thru 848, inclusive; Lot 849 thru 852, inclusive; Lot 853 thru 856, inclusive; Lot 857 thru 860, inclusive; Lot 861 thru 864, inclusive; Lot 865 thru 868, inclusive; Lot 869 thru 872, inclusive; Lot 873 thru 876, inclusive; Lot 877 thru 880, inclusive; Lot 881 thru 884, inclusive; Lot 885 thru 888, inclusive; Lot 889 thru 892, inclusive; Lot 893 thru 896, inclusive; Lot 897 thru 900, inclusive; Lot 901 thru 904, inclusive; Lot 905 thru 908, inclusive; Lot 909 thru 912, inclusive; Lot 913 thru 916, inclusive; Lot 917 thru 920, inclusive; Lot 921 thru 924, inclusive; Lot 925 thru 928, inclusive; Lot 929 thru 932, inclusive; Lot 933 thru 936, inclusive; Lot 937 thru 940, inclusive; Lot 941 thru 944, inclusive; Lot 945 thru 948, inclusive; Lot 949 thru 952, inclusive; Lot 953 thru 956, inclusive; Lot 957 thru 960, inclusive; Lot 961 thru 964, inclusive; Lot 965 thru 968, inclusive; Lot 969 thru 972, inclusive; Lot 973 thru 976, inclusive; Lot 977 thru 980, inclusive; Lot 981 thru 984, inclusive; Lot 985 thru 988, inclusive; Lot 989 thru 992, inclusive; Lot 993 thru 996, inclusive; Lot 997 thru 1000, inclusive.



**GENERAL CONDITIONS**

1. THESE COPIES THAT I HAVE MADE A NEAREST COPY OF THE ORIGINAL RECORDS, AND THAT NEAREST COPY SHALL BE KEPT IN MY OFFICE AT ALL TIMES, AND IN THE EVENT OF THE LOSS OF THIS COPY, I WILL REPRODUCE THE SAME AT MY OWN EXPENSE. I HEREBY CERTIFY THAT I HAVE MADE A NEAREST COPY OF THE ORIGINAL RECORDS, AND THAT NEAREST COPY SHALL BE KEPT IN MY OFFICE AT ALL TIMES, AND IN THE EVENT OF THE LOSS OF THIS COPY, I WILL REPRODUCE THE SAME AT MY OWN EXPENSE.

2. I HEREBY CERTIFY THAT I HAVE MADE A NEAREST COPY OF THE ORIGINAL RECORDS, AND THAT NEAREST COPY SHALL BE KEPT IN MY OFFICE AT ALL TIMES, AND IN THE EVENT OF THE LOSS OF THIS COPY, I WILL REPRODUCE THE SAME AT MY OWN EXPENSE.

3. I HEREBY CERTIFY THAT I HAVE MADE A NEAREST COPY OF THE ORIGINAL RECORDS, AND THAT NEAREST COPY SHALL BE KEPT IN MY OFFICE AT ALL TIMES, AND IN THE EVENT OF THE LOSS OF THIS COPY, I WILL REPRODUCE THE SAME AT MY OWN EXPENSE.

4. I HEREBY CERTIFY THAT I HAVE MADE A NEAREST COPY OF THE ORIGINAL RECORDS, AND THAT NEAREST COPY SHALL BE KEPT IN MY OFFICE AT ALL TIMES, AND IN THE EVENT OF THE LOSS OF THIS COPY, I WILL REPRODUCE THE SAME AT MY OWN EXPENSE.

5. I HEREBY CERTIFY THAT I HAVE MADE A NEAREST COPY OF THE ORIGINAL RECORDS, AND THAT NEAREST COPY SHALL BE KEPT IN MY OFFICE AT ALL TIMES, AND IN THE EVENT OF THE LOSS OF THIS COPY, I WILL REPRODUCE THE SAME AT MY OWN EXPENSE.

6. I HEREBY CERTIFY THAT I HAVE MADE A NEAREST COPY OF THE ORIGINAL RECORDS, AND THAT NEAREST COPY SHALL BE KEPT IN MY OFFICE AT ALL TIMES, AND IN THE EVENT OF THE LOSS OF THIS COPY, I WILL REPRODUCE THE SAME AT MY OWN EXPENSE.

7. I HEREBY CERTIFY THAT I HAVE MADE A NEAREST COPY OF THE ORIGINAL RECORDS, AND THAT NEAREST COPY SHALL BE KEPT IN MY OFFICE AT ALL TIMES, AND IN THE EVENT OF THE LOSS OF THIS COPY, I WILL REPRODUCE THE SAME AT MY OWN EXPENSE.

8. I HEREBY CERTIFY THAT I HAVE MADE A NEAREST COPY OF THE ORIGINAL RECORDS, AND THAT NEAREST COPY SHALL BE KEPT IN MY OFFICE AT ALL TIMES, AND IN THE EVENT OF THE LOSS OF THIS COPY, I WILL REPRODUCE THE SAME AT MY OWN EXPENSE.

9. I HEREBY CERTIFY THAT I HAVE MADE A NEAREST COPY OF THE ORIGINAL RECORDS, AND THAT NEAREST COPY SHALL BE KEPT IN MY OFFICE AT ALL TIMES, AND IN THE EVENT OF THE LOSS OF THIS COPY, I WILL REPRODUCE THE SAME AT MY OWN EXPENSE.

10. I HEREBY CERTIFY THAT I HAVE MADE A NEAREST COPY OF THE ORIGINAL RECORDS, AND THAT NEAREST COPY SHALL BE KEPT IN MY OFFICE AT ALL TIMES, AND IN THE EVENT OF THE LOSS OF THIS COPY, I WILL REPRODUCE THE SAME AT MY OWN EXPENSE.

**WITNESSED**

Subscribed and sworn to before me on this 14th day of July, 1975, at Omaha, Nebraska.

Notary Public in and for Douglas County, Nebraska.

*William Plummer*

**STATE OF NEBRASKA** ss  
 I, *William Plummer*, Notary Public, do hereby certify that the foregoing is a true and correct copy of the original records of the above and entitled plat, and that the same have been duly recorded in my office.

**STATE OF NEBRASKA** ss  
 I, *William Plummer*, Notary Public, do hereby certify that the foregoing is a true and correct copy of the original records of the above and entitled plat, and that the same have been duly recorded in my office.

**STATE OF NEBRASKA** ss  
 I, *William Plummer*, Notary Public, do hereby certify that the foregoing is a true and correct copy of the original records of the above and entitled plat, and that the same have been duly recorded in my office.

**STATE OF NEBRASKA** ss  
 I, *William Plummer*, Notary Public, do hereby certify that the foregoing is a true and correct copy of the original records of the above and entitled plat, and that the same have been duly recorded in my office.

**STATE OF NEBRASKA** ss  
 I, *William Plummer*, Notary Public, do hereby certify that the foregoing is a true and correct copy of the original records of the above and entitled plat, and that the same have been duly recorded in my office.

**APPROVED**

ATTEST: My commission expires on the 14th day of July, 1977.

*William Plummer*

**APPROVED**

ATTEST: My commission expires on the 14th day of July, 1977.

*William Plummer*

**APPROVED**

ATTEST: My commission expires on the 14th day of July, 1977.

*William Plummer*

ENTERED IN NUMERICAL INDEX AND RECORDED IN THE PUBLIC RECORDS OF THE COUNTY OF DOUGLAS, NEBRASKA, THIS 20th DAY OF JANUARY, 1976 AT 4:07 P.M. C. HAROLD OSTLER, REGISTER OF DEEDS

**THOMPSON ENGINEERS & SURVEYORS**

Consulting Engineers & Land Surveyors

1100 North 10th Street, Omaha, Nebraska 68102

Phone 461-1111

# BOOK 1536