

RAMBLERIDGE 2ND ADDITION

A REPLAT OF LOT 643, RAMBLERIDGE, AN ADDITION IN PART OF THE SE 1/4 OF SECTION 32 & THE SOUTH 1/2 OF THE NE 1/4 OF SAID SEC. 32 & THE EAST 1/2 OF THE EAST 1/2 OF THE SW 1/4 OF SAID SEC. 32, ALL IN T16N. R12E OF THE 6TH P.M., DOUGLAS COUNTY, NEBR.

Surveyor's Certificate

I certify that I have made a ground survey of the subdivision described herein and that temporary monuments have been placed as shown on the within plat and that a bond has been furnished to the City of Omaha to insure placing of permanent monuments and stakes at all corners of all lots, streets, avenues, single points and ends of all courses in Rambleridge 2nd Addition, Lots 1 thru 31, (inclusive), a replat of Lot 643, Rambleridge, an addition in part of the SE 1/4 of said Section 32 and the South 1/2 of the NE 1/4 of said Section 32 and the East 1/2 of the SW 1/4 of said Section 32, all in Township 16 North, Range 12 East of the 6th P.M., Douglas County, Nebraska.



David Elliott
 David W. Elliott L.S. 305
 7-2-73
 Date

DEDICATION

Now all men by these presents that we, Edward E. and Kathleen L. Wilczewski, (husband and wife), owners of the property described in the certification of survey herein, do hereby certify and agree that the streets, avenues, alleys, sidewalks and easements shown on this plat, and the easements and encumbrances shown on this plat, are dedicated to the public use, the streets and easements as shown on this plat. We do further grant a perpetual license in fee of our grant to the Omaha Public Power District to operate, maintain, repair and renew cables, conduits and poles with the necessary appurtenances, and to erect thereon wires for the carrying and transmission of electric current, gas, water, steam, telephone, telegraph and message service, over, upon or under a five (5) foot strip of land shown required hereon lots 1 thru 31, inclusive, Rambleridge 2nd Addition.

In witness whereof we do set our names this 2 day of July, 1973.

Edward E. Wilczewski
 Edward E. Wilczewski
Kathleen L. Wilczewski
 Kathleen L. Wilczewski

ACKNOWLEDGMENT OF NOTARY

STATE OF NEBRASKA } SS
 COUNTY OF DOUGLAS }

On this 2 day of July, 1973, before me the undersigned, a Notary Public in and for the State of Nebraska, personally appeared Edward E. Wilczewski, to be personally known to me as the identical person whose name are affixed to the dedication on this plat, and acknowledged the execution thereof to me as the Notary Public in and for the State of Nebraska.

Edward E. Wilczewski
 Edward E. Wilczewski
 Notary Public
 My Comm. Expires 12-31-76



CITY TREASURER'S CERTIFICATE

I hereby certify that I find no regular or special taxes due or delinquent on the property described in the surveyor's certificate and endorsed in the records of this office.

John J. Handell
 John J. Handell
 City Treasurer

APPROVE OF CITY ENGINEER OF OMAHA

I hereby approve of this plat of Rambleridge 2nd Addition (Lots 1 thru 31, inclusive) on this 17 day of July, 1973.

John J. Handell
 John J. Handell
 City Engineer

OMAHA CITY COUNCIL ACCEPTANCE

This plat of Rambleridge 2nd Addition (Lots 1 thru 31, inclusive) was approved by the City Council of Omaha on this 17 day of July, 1973.

John J. Handell
 John J. Handell
 President of Council

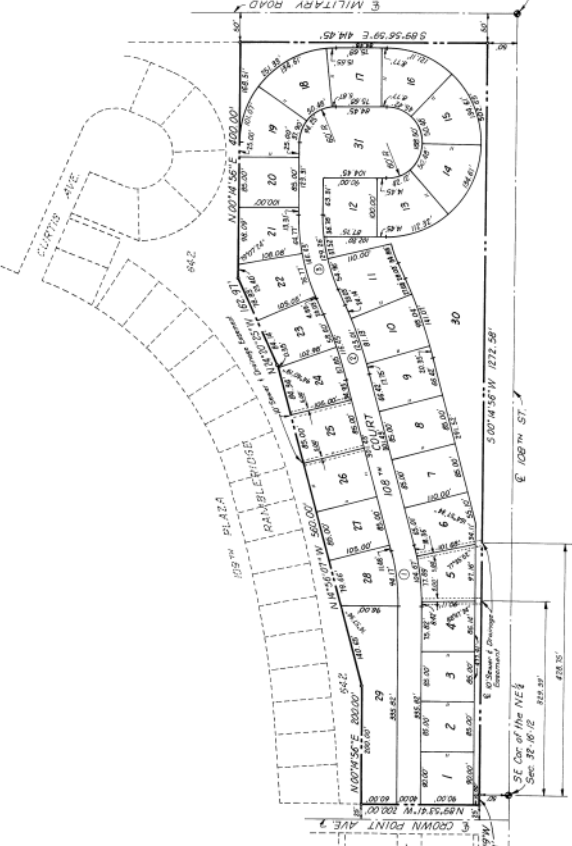
APPROVAL OF OMAHA CITY PLANNING BOARD
 This plat of Rambleridge 2nd Addition (Lots 1 thru 31, inclusive) was approved by the City Planning Board on this 17 day of July, 1973.

John J. Handell
 John J. Handell
 Chairman of City Planning Board



E CURVE DATA

①	Δ	151°22'26"
	R	378.76'
	T	500.00'
	L	15.47860'
②	Δ	99°49'18"
	R	600.00'
	T	199.73'
	D	7.88550'
③	Δ	24°35'27"
	R	321.99'
	T	70.00'
	L	16.41'
	D	17.68860'



NE Cor. of the SE 1/4 NE 1/4
 Sec. 32, T16N, R12E