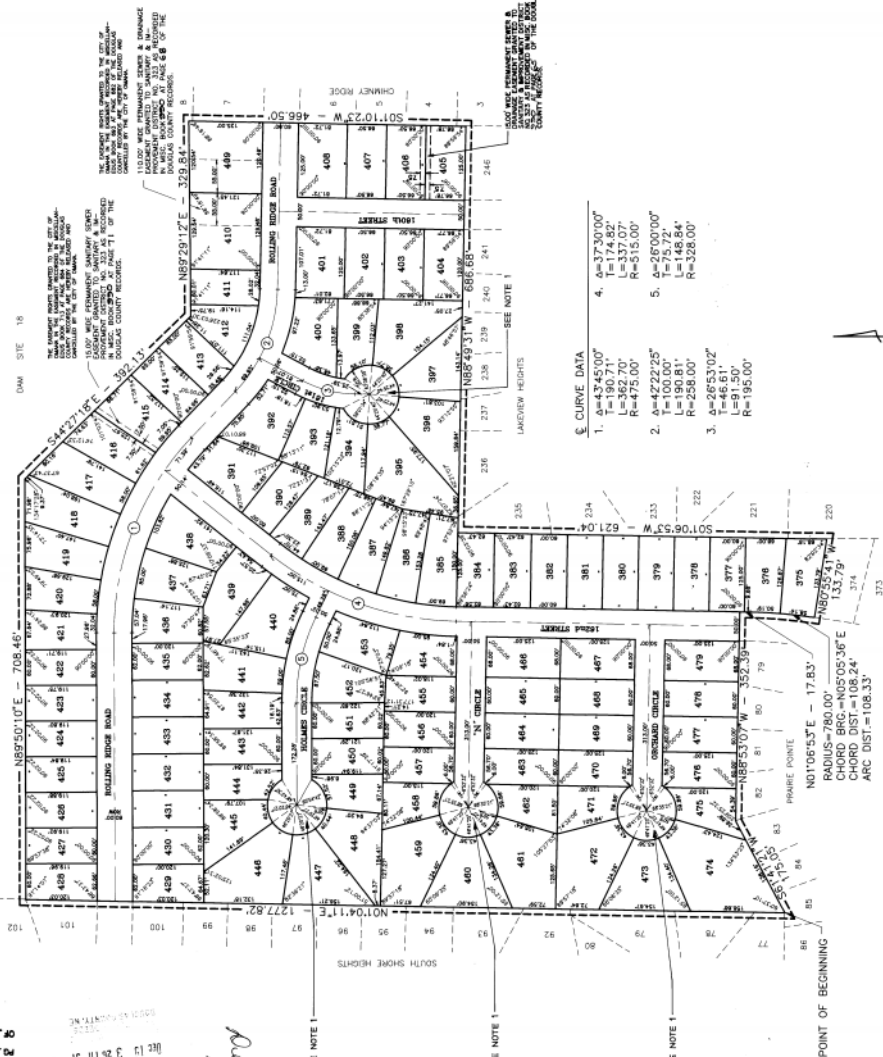


1913 90.605

PRAIRIE POINTE

LOTS 375 THRU 479 INCLUSIVE

BEING A REPLATINGS OF PART OF LOT 14, PRAIRIE POINTE
A SUBDIVISION AS SURVEYED, PLATTED AND RECORDED IN
DOUGLAS COUNTY, NEBRASKA, TOGETHER WITH A PART OF THE
WEST 1/2 OF THE SE 1/4 OF SECTION 3, T14N, R11E OF THE
8th P.M., DOUGLAS COUNTY, NEBRASKA



SURVEYOR'S CERTIFICATE
I HEREBY CERTIFY THAT I HAVE MADE A BOUNDARY SURVEY OF THE SUBDIVISION HEREIN DESCRIBED AND THAT THE BOUNDARIES OR PERMANENT MARKERS HAVE BEEN FOUND AT ALL CORNERS AND INTERSECTIONS AND THAT THE LOTS BEING SURVEYED ARE CORRECTLY DESCRIBED AS SHOWN ON THE PLAT. THE SURVEY WAS MADE BY ME OR UNDER MY CLOSE PERSONAL SUPERVISION AND I AM A RESIDENT OF THE STATE OF NEBRASKA. THE SURVEY WAS MADE ON THE 2nd DAY OF JULY, 1991, AT THE CITY OF OMAHA, NEBRASKA. THE SURVEY WAS MADE IN ACCORDANCE WITH THE REQUIREMENTS OF THE NEBRASKA SURVEYING ACT AND THE RULES AND REGULATIONS OF THE BOARD OF SURVEYING AND MAPPING. THE SURVEY WAS MADE IN ACCORDANCE WITH THE REQUIREMENTS OF THE NEBRASKA SURVEYING ACT AND THE RULES AND REGULATIONS OF THE BOARD OF SURVEYING AND MAPPING. THE SURVEY WAS MADE IN ACCORDANCE WITH THE REQUIREMENTS OF THE NEBRASKA SURVEYING ACT AND THE RULES AND REGULATIONS OF THE BOARD OF SURVEYING AND MAPPING.

ACKNOWLEDGMENT OF NOTARY
COUNTY OF NEBRASKA)
STATE OF NEBRASKA)
I, JACK CZEGLINSKI, of the County of DOUGLAS and State of NEBRASKA, do hereby certify that I am the duly authorized representative of DOUGLAS COUNTY TRUST CO. and that the foregoing plat was prepared by me or under my supervision and that I am a resident of the State of Nebraska. The foregoing plat was prepared and recorded on the 2nd day of July, 1991, at the City of Omaha, Nebraska. The foregoing plat was prepared and recorded in accordance with the requirements of the Nebraska Surveying Act and the rules and regulations of the Board of Surveying and Mapping.

ACKNOWLEDGMENT OF NOTARY
COUNTY OF NEBRASKA)
STATE OF NEBRASKA)
I, John J. Scharf, of the County of DOUGLAS and State of NEBRASKA, do hereby certify that I am the duly authorized representative of DOUGLAS COUNTY TRUST CO. and that the foregoing plat was prepared by me or under my supervision and that I am a resident of the State of Nebraska. The foregoing plat was prepared and recorded on the 2nd day of July, 1991, at the City of Omaha, Nebraska. The foregoing plat was prepared and recorded in accordance with the requirements of the Nebraska Surveying Act and the rules and regulations of the Board of Surveying and Mapping.

APPROVAL OF CITY ENGINEER
I HEREBY APPROVE THE PLAT OF PRAIRIE POINTE ON THIS 2nd DAY OF JULY, 1991.
John J. Scharf
CITY ENGINEER

APPROVAL OF CITY PLANNING BOARD
THIS PLAT OF PRAIRIE POINTE WAS APPROVED BY THE CITY PLANNING BOARD OF THE CITY OF OMAHA, NEBRASKA, ON THIS 2nd DAY OF JULY, 1991.
David D. Scharf
CITY PLANNING BOARD

APPROVAL OF OMAHA CITY COUNCIL
THIS PLAT OF PRAIRIE POINTE WAS APPROVED AND ACCEPTED BY THE CITY COUNCIL OF OMAHA, NEBRASKA, ON THIS 2nd DAY OF JULY, 1991.
David D. Scharf
CITY CLERK

REVIEW BY DOUGLAS COUNTY ENGINEER
THIS PLAT OF PRAIRIE POINTE WAS REVIEWED BY THE DOUGLAS COUNTY ENGINEER'S OFFICE ON THIS 2nd DAY OF JULY, 1991.
John J. Scharf
DOUGLAS COUNTY ENGINEER