

- ⑤ Δ = 14°05'00" D = 5.5092 T = 126.46 L = 255.03 R = 1240.00'
- ⑥ Δ = 14°05'00" D = 4.3409 T = 103.05 L = 324.66 R = 1320.00'
- ⑦ Δ = 14°20'00" D = 5.4545 T = 132.08 L = 262.70 R = 1050.44'
- ⑧ Δ = 37°30'30" D = 10.0000 T = 106.05 L = 224.99 R = 3500.00'

LEGEND
RECORDED DIMENSION M
MEASURED DIMENSION M

ENTERED AN NUMERICAL INDEX AND RECORDED IN THE REGISTER OF DEEDS OFFICE IN DOUGLAS COUNTY, NEBRASKA, 3:45 PM DAY OF March 19 1984 AT 7:49 AM. GEORGE J. BUGLEWICZ, REGISTER OF DEEDS.

STATE OF NEBRASKA
COUNTY OF DOUGLAS
Resident of the Precinct of Bellevue and City of Omaha, Jack Czerwinski, Clerk of the Corporation.

STATE OF NEBRASKA
COUNTY OF DOUGLAS
and VP of Belbanc, Inc. a Corporation of the State of Nebraska, Looney Rollins, Secretary.

STATE OF NEBRASKA
COUNTY OF DOUGLAS
ACKNOWLEDGMENT OF NOTARY
16th DAY OF January, 1984, by Looney Rollins, Secretary of Belbanc, Inc. a Corporation of the State of Nebraska.

STATE OF NEBRASKA
COUNTY OF DOUGLAS
THE FOREGOING INSTRUMENT WAS ACKNOWLEDGED BEFORE ME THIS 10th DAY OF January, 1984, BY Ray & Betty Ehlers, Mr. & Mrs. Ray & Betty Ehlers, of the County of Douglas, Nebraska.

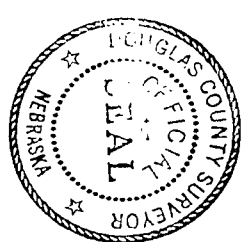
APPROVAL OF CITY ENGINEER
I HEREBY APPROVE THE PLAT OF PRAIRIE POINTE ON THIS 3rd DAY OF February, 1984.
David J. Burmann
CITY ENGINEER

APPROVAL OF CITY PLANNING BOARD
I HEREBY CERTIFY THAT ALL CITY PLANNING BOARD REQUIREMENTS HAVE BEEN MET FOR COMPLIANCE WITH CHAPTER 53 OF THE NEBRASKA MUNICIPAL CODE.
David J. Burmann
CITY ENGINEER

APPROVAL OF CITY PLANNING BOARD
THIS PLAT OF PRAIRIE POINTE WAS APPROVED BY THE CITY PLANNING BOARD OF THE CITY OF OMAHA, THIS 8 DAY OF FEBRUARY, 1984.
Sam R. Bly
CHIEF CLERK

APPROVAL OF OMAHA CITY COUNCIL
THIS PART OF PRAIRIE POINTE WAS APPROVED AND ACCEPTED BY THE CITY COUNCIL OF OMAHA THIS 24 DAY OF April, 1984.
Arnold St. Croix
CITY CLERK

APPROVAL BY DOUGLAS COUNTY SURVEYOR
THIS PLAT OF PRAIRIE POINTE WAS REVIEWED BY THE DOUGLAS COUNTY SURVEYOR'S OFFICE ON THIS 14th DAY OF July, 1984.
Stephen D. Bunde
DOUGLAS COUNTY SURVEYOR



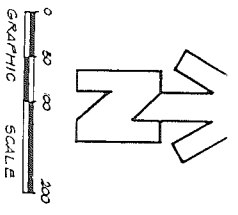
THOMPSON DRESSEN & DORNER
Consulting Engineers & Land Surveyors
10230 PACIFIC ST., OMAHA, NEBRASKA 68114
TELEPHONE 337-7844 AREA CODE 402

2

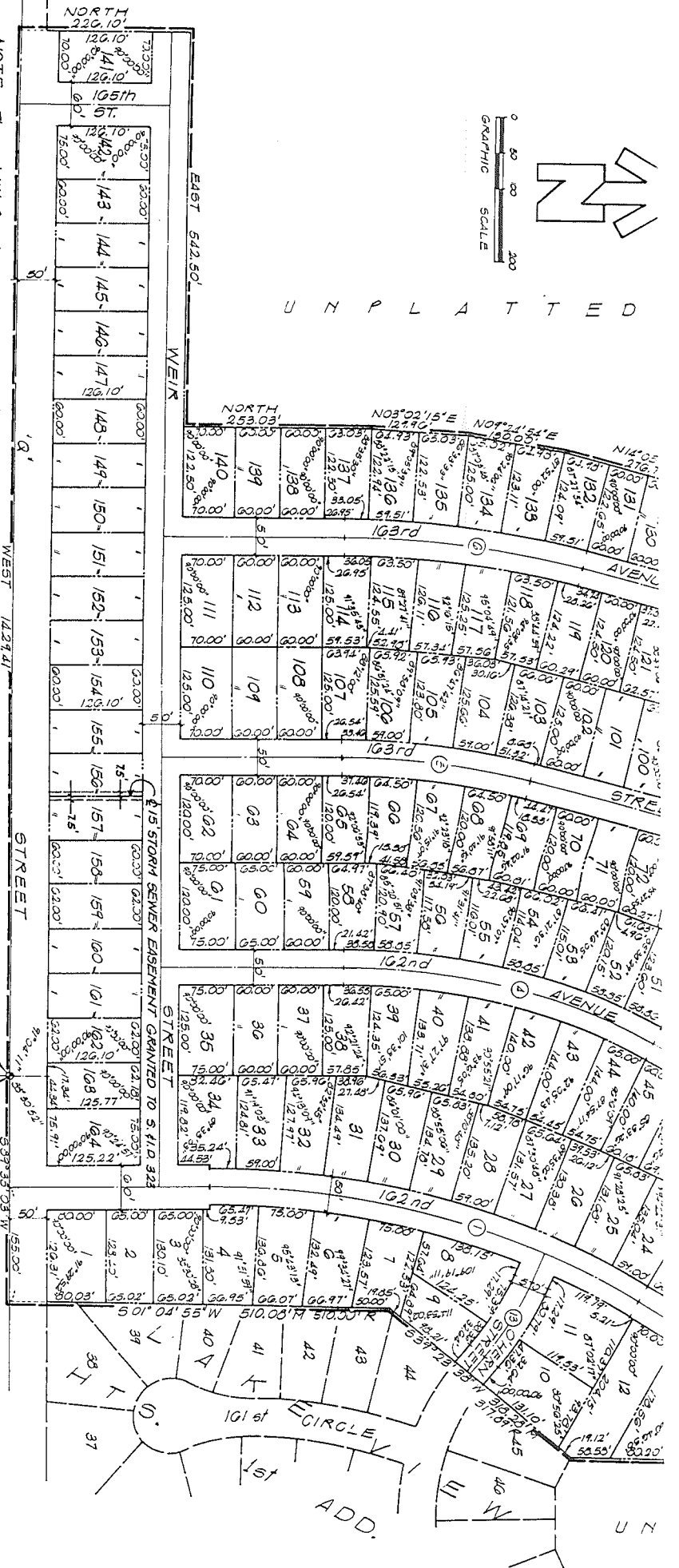
PRAIRIE POINTE

SCALE: AS SHOWN
DATE: 1-4-84

FIELD PAT



UNPLATTED



NOTE: There will be no access onto "A" St. from Lot 1 thru Lot 164, inclusive.

CENTERLINE CURVE DATA

①	②	③	④	⑤	⑥	⑦	⑧	⑨	⑩	⑪
Δ = 30°45'00"	Δ = 23°13'10"	Δ = 18°30'00"	Δ = 24°00'00"	Δ = 56°45'00"	Δ = 37°30'00"	Δ = 14°05'00"	Δ = 14°05'00"	Δ = 14°05'00"	Δ = 14°05'00"	Δ = 14°05'00"
D = 5,025.9'	D = 7,583.3'	D = 13,641.9'	D = 12,193.0'	D = 16,370.2'	D = 4,310.0'	D = 5,509.2'	D = 4,310.0'	D = 5,509.2'	D = 4,310.0'	D = 5,509.2'
T = 313.47'	T = 196.30'	T = 107.14'	T = 99.90'	T = 116.20'	T = 103.05'	T = 128.46'	T = 103.05'	T = 128.46'	T = 103.05'	T = 128.46'
L = 385.03'	L = 385.03'	L = 323.47'	L = 146.87'	L = 224.44'	L = 324.44'	L = 255.03'	L = 324.44'	L = 255.03'	L = 324.44'	L = 255.03'
R = 11,400.0'	R = 7,550.0'	R = 530.04'	R = 420.00'	R = 350.00'	R = 319.37'	R = 1,050.44'	R = 1,050.44'	R = 1,050.44'	R = 1,050.44'	R = 1,050.44'

POINT OF BEGINNING
SOUTHEAST CORNER OF THE SW 1/4 OF SECTION 31 T14N, R11E OF THE Q1N PM, DOUGLAS COUNTY, NEBRASKA.

LEGEND
RECORDED DIMENSION
MEASURED DIMENSION



ENTERED IN NUMERICAL INDEX AND RECORDED IN THE REGISTER OF DEEDS OFFICE IN DOUGLAS COUNTY, NEBRASKA
3:45 P.M. DAY OF March 19 1981 AT 8:28 A.M. GEORGE J. BUGLEWICZ, REGISTER OF DEEDS

THIS PART OF PLAT BEING
BY
Michael

THIS PART OF PLAT BEING

I HEREBY CERTIFY THAT I
PREPARED IN THIS PLAT, AS S
BY
March 5, 1981

I HEREBY APPROVE THE PLAT

STATE OF NEBRASKA
COUNTY OF DOUGLAS
THE

STATE OF NEBRASKA
COUNTY OF DOUGLAS
2nd VP
OF THE

STATE OF NEBRASKA
COUNTY OF DOUGLAS
Resident
OF THE

STATE OF NEBRASKA
COUNTY OF DOUGLAS
Resident
OF THE