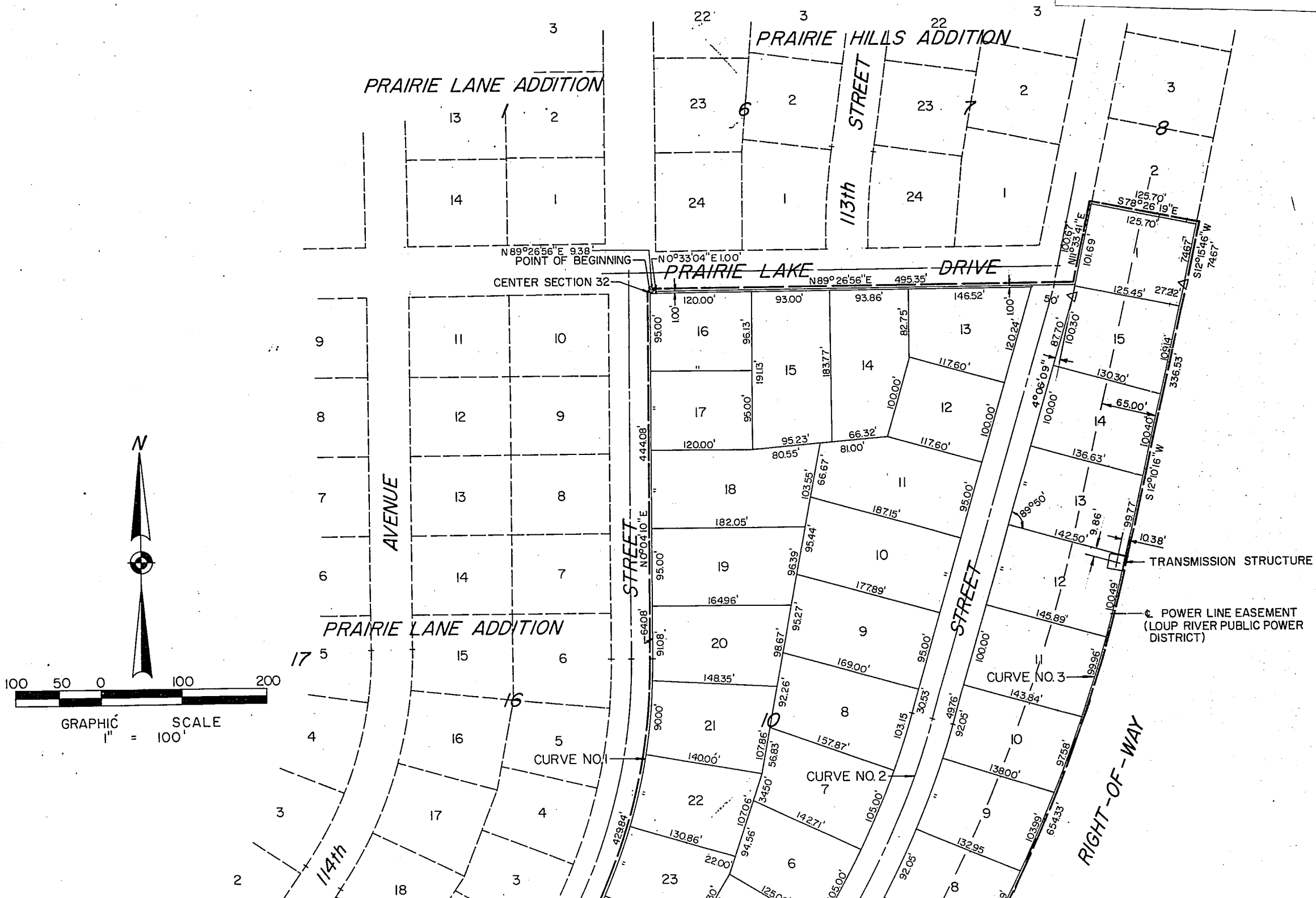


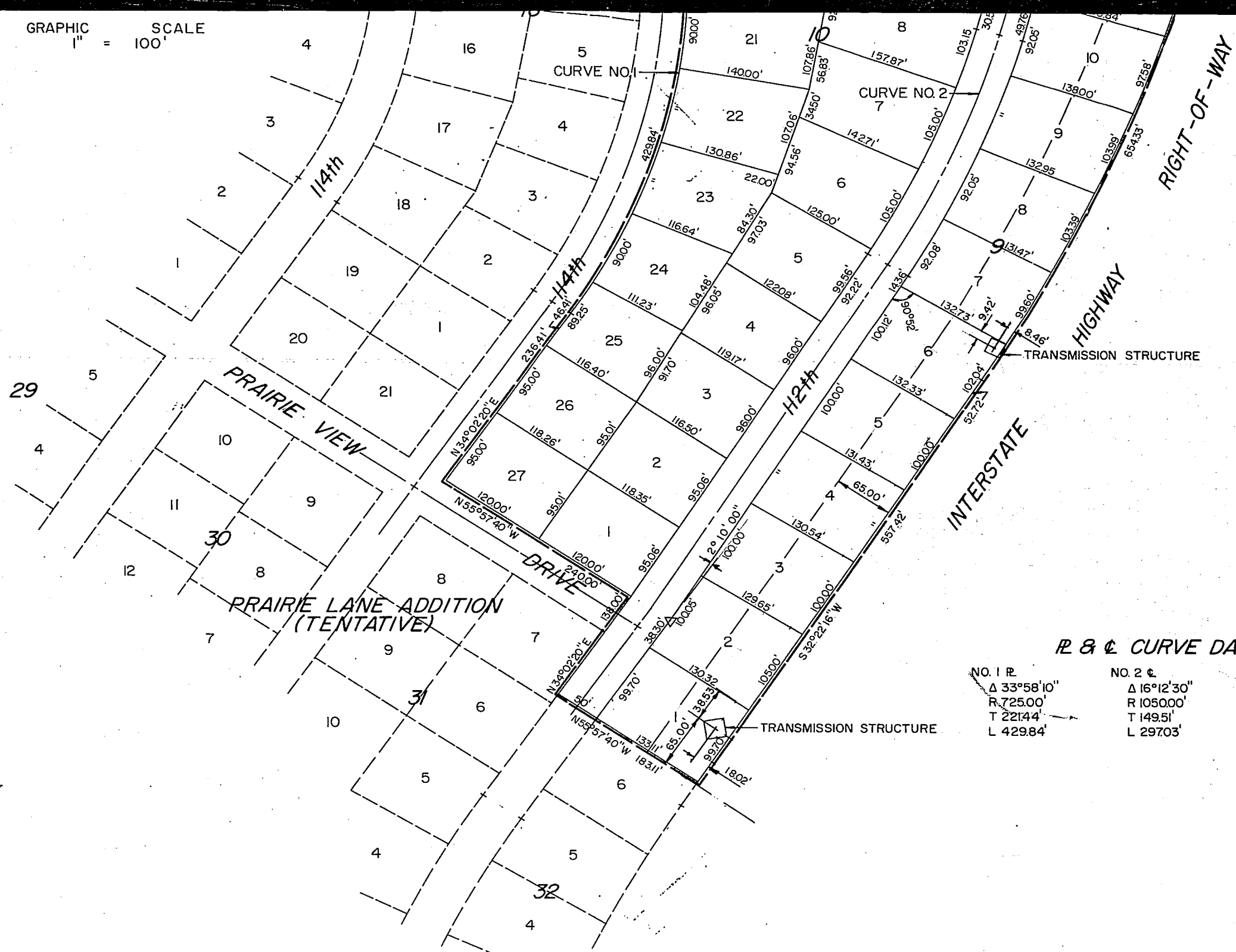
# PRAIRIE HILLS ADDITION

Book 1169-173

ALL OF BLOCKS 9 AND 10; LOT 1, BLOCK 8. A SUBDIVISION OF PART OF THE S 1/2 AND PART OF THE NE 1/4 OF SEC. 32, T15N, R12E OF THE 6th P.M. ALL IN DOUGLAS COUNTY, NEBRASKA



GRAPHIC SCALE  
1" = 100'



**R & C CURVE DATA**

NO. 1 R	NO. 2 C	NO. 3 R
Δ 33°58'10"	Δ 16°12'30"	Δ 20°12'00"
R 725.00'	R 1050.00'	R 1855.95'
T 221.44'	T 149.51'	T 330.60'
L 429.84'	L 297.03'	L 654.33'

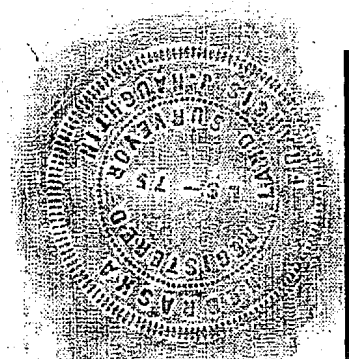
## SURVEYOR'S CERTIFICATE

I HEREBY CERTIFY THAT I HAVE ACCURATELY SURVEYED AND STAKED WITH IRON PINS ALL CORNERS OF ALL LOTS, BLOCKS, STREETS, DRIVES, ALL ANGLE POINTS AND THE ENDS OF ALL CURVES IN THIS PLATTING OF PRAIRIE HILLS ADDITION, ALL OF BLOCKS 9 AND 10; LOT 1, BLOCK 8, AN ADDITION TO DOUGLAS COUNTY, NEBRASKA, AND THAT SAID PLAT IS A PLATTING OF THAT PART OF THE SOUTH HALF (S $\frac{1}{2}$ ) AND THAT PART OF THE NORTHEAST QUARTER (NE $\frac{1}{4}$ ) OF SECTION 32, TOWNSHIP 15 NORTH, RANGE 12 EAST OF THE 6TH PRINCIPAL MERIDIAN, MORE PARTICULARLY DESCRIBED AND BOUNDED AS FOLLOWS:

BEGINNING AT A POINT WHICH IS THE NORTHWEST CORNER OF THE SOUTHEAST QUARTER (SE $\frac{1}{4}$ ) OF SECTION 32, TOWNSHIP 15 NORTH, RANGE 12 EAST OF THE 6TH PRINCIPAL MERIDIAN; THENCE, ASSUMING THE WEST LINE OF SAID SOUTHEAST QUARTER (SE $\frac{1}{4}$ ) TO BE ON A BEARING OF N 0°04'10" E, ON A BEARING OF N 89°26'56" E AND RUNNING A DISTANCE OF 9.38 FEET TO A POINT; THENCE ON A BEARING OF N 0°33'04" E AND RUNNING A DISTANCE OF 1.00 FEET TO A POINT; THENCE ON A BEARING OF N 89°26'56" E AND RUNNING A DISTANCE OF 495.35 FEET TO A POINT; THENCE ON A BEARING OF N 11°33'41" E AND RUNNING A DISTANCE OF 100.67 FEET TO A POINT; THENCE ON A BEARING OF S 78°26'19" E AND RUNNING A DISTANCE OF 125.70 FEET TO A POINT; THENCE ON A BEARING OF S 12°15'46" W AND RUNNING A DISTANCE OF 74.67 FEET TO A POINT; THENCE ON A BEARING OF S 12°10'16" W AND RUNNING A DISTANCE OF 336.53 FEET TO THE POINT OF CURVE OF A CURVE TO THE RIGHT, HAVING A RADIUS OF 1855.95 FEET AND A CENTRAL ANGLE OF 20°12'00"; THENCE RUNNING SOUTHWESTERLY ALONG SAID CURVE A DISTANCE OF 654.33 FEET TO THE POINT OF TANGENCY OF SAID CURVE; THENCE ON A BEARING OF S 32°22'16" W AND RUNNING A DISTANCE OF 557.42 FEET TO A POINT; THENCE ON A BEARING OF N 55°57'40" W AND RUNNING A DISTANCE OF 183.11 FEET TO A POINT; THENCE ON A BEARING OF N 34°02'20" E AND RUNNING A DISTANCE OF 138.00 FEET TO A POINT; THENCE ON A BEARING OF N 55°57'40" W AND RUNNING A DISTANCE OF 240.00 FEET TO A POINT; THENCE ON A BEARING OF N 34°02'20" E AND RUNNING A DISTANCE OF 236.41 FEET TO THE POINT OF CURVE OF A CURVE TO THE LEFT HAVING A RADIUS OF 725.00 FEET AND A CENTRAL ANGLE OF 33°58'10"; THENCE RUNNING NORTHEASTERLY ALONG SAID CURVE A DISTANCE OF 429.84 FEET TO THE POINT OF TANGENCY OF SAID CURVE; THENCE ON A BEARING OF N 0°04'10" E AND RUNNING A DISTANCE OF 444.08 FEET TO THE POINT OF BEGINNING.

IN WITNESS WHEREOF I DO HEREUNTO SET MY HAND AND OFFICIAL SEAL AT OMAHA, NEBRASKA ON THIS 29<sup>TH</sup> DAY OF August A.D. 1962

Thomas J. Navaghtes  
REGISTERED LAND SURVEYOR L.S. 75  
HENNINGSON, DURHAM AND RICHARDSON, INC.  
ARCHITECTS-ENGINEERS

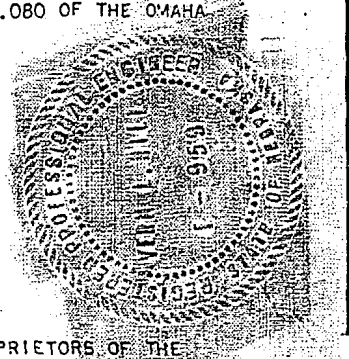


## GRADING CERTIFICATE

I HEREBY CERTIFY THAT THE STREET RIGHT-OF-WAYS AS SHOWN HEREON HAVE BEEN GRADED TO SUBSTANTIALLY THE GRADES AS APPROVED BY THE CITY ENGINEER, AS REQUIRED BY CHAPTER 56.04.080 OF THE OMAHA MUNICIPAL CODE.

IN WITNESS WHEREOF I DO HEREUNTO SET MY HAND AND OFFICIAL SEAL AT OMAHA, NEBRASKA ON THIS 29<sup>TH</sup> DAY OF August A.D. 1962

Sam L. Hill  
REGISTERED ENGINEER  
HENNINGSON, DURHAM AND RICHARDSON INC.  
ENGINEERS - ARCHITECTS



## DEDICATION

KNOW ALL MEN BY THESE PRESENTS THAT PRAIRIE HILLS CORPORATION, A NEBRASKA CORPORATION AND GEORGE C SAMSON AND WILMA B. SAMSON (HUSBAND AND WIFE) BEING SOLE OWNERS AND PROPRIETORS OF THE LAND DESCRIBED IN THE SURVEYOR'S CERTIFICATE AND EMBRACED WITHIN THIS PLAT AS SHOWN HEREON, HAVE CAUSED THE SAME TO BE SUBDIVIDED INTO LOTS, BLOCKS, STREETS AND DRIVE AS SHOWN, TO BE KNOWN AS PRAIRIE HILLS ADDITION, THE LOTS AND BLOCKS NUMBERED AS SHOWN AND WE HEREBY RATIFY AND APPROVE OF THE DISPOSITION OF OUR PROPERTY AS SHOWN AND WE HEREBY DEDICATE TO THE PUBLIC FOR PUBLIC USE THE STREETS AS SHOWN HEREON

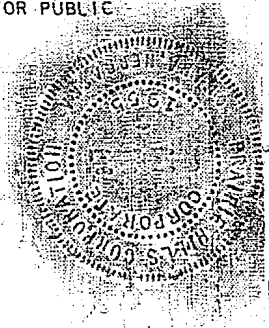
IN WITNESS WHEREOF WE DO HEREUNTO SET OUR HANDS AND CORPORATE SEAL ON THIS 29<sup>th</sup> DAY OF August A.D. 1962

Laurance H. Myers  
LAURANCE H. MYERS  
PRESIDENT  
PRAIRIE HILLS CORPORATION

John J. Moritz  
JOHN J. MORITZ  
SECRETARY  
PRAIRIE HILLS CORPORATION

George C. Samson  
GEORGE C. SAMSON (HUSBAND)

Wilma B. Samson  
WILMA B. SAMSON (WIFE)



Book 1169-195

ACKNOWLEDGEMENT

STATE OF NEBRASKA  
COUNTY OF DOUGLAS<sup>SS</sup>

ON THIS 27th DAY OF August A.D. 1962, BEFORE ME A NOTARY PUBLIC, DULY COMMISSIONED AND QUALIFIED IN AND FOR SAID COUNTY, CAME THE ABOVE, LAURANCE H. MYERS, PRESIDENT AND JOHN J. MYERS, SECRETARY OF PRAIRIE HILLS CORPORATION, AND GEORGE C. SAMSON AND WILMA B. SAMSON (HUSBAND AND WIFE), WHO ARE PERSONALLY KNOWN BY ME TO BE THE SAME IDENTICAL PERSONS WHOSE NAMES ARE AFFIXED TO THE ABOVE DEDICATION, AND THEY ACKNOWLEDGE THE SIGNING OF THE ABOVE DEDICATION TO BE THEIR VOLUNTARY ACTS AND DEEDS AND THE VOLUNTARY ACT AND DEED OF SAID CORPORATION

WITNESS MY HAND AND OFFICIAL SEAL AT OMAHA, NEBRASKA, IN SAID COUNTY, THE DATE LAST AFORESAID.

MY COMMISSION EXPIRES THE 3rd DAY OF March A.D. 1965

Ola Everley  
NOTARY PUBLIC

COUNTY TREASURER'S CERTIFICATE

THIS IS TO CERTIFY THAT I FIND NO REGULAR OR SPECIAL TAXES DUE OR DELINQUENT AGAINST THE PROPERTY DESCRIBED IN THE SURVEYOR'S CERTIFICATE AND EMBRACED WITHIN THE RECORDS OF THIS OFFICE

[Signature]  
COUNTY TREASURER  
DOUGLAS COUNTY

DATE: 8/29/62

DEPUTY TREASURER  
DOUGLAS COUNTY

APPROVAL OF CITY ENGINEER

I HEREBY APPROVE THIS PLATTING OF PRAIRIE HILLS ADDITION ON THIS 16th DAY OF October A.D. 1962

D. P. DeBord  
CITY ENGINEER  
CITY OF OMAHA

APPROVAL OF CITY PLANNING BOARD

THIS PLATTING OF PRAIRIE HILLS ADDITION WAS APPROVED BY THE PLANNING BOARD OF THE CITY OF OMAHA ON THIS 24 DAY OF OCTOBER A.D. 1962

Wallace Hopkins  
CHAIRMAN, CITY PLANNING BOARD  
CITY OF OMAHA

CITY COUNCIL ACCEPTANCE

THIS PLATTING OF PRAIRIE HILLS ADDITION WAS APPROVED AND ACCEPTED BY THE CITY COUNCIL OF THE CITY OF OMAHA, NEBRASKA ON THIS 13th DAY OF November A.D. 1962

Harry Simpson  
PRESIDENT, CITY COUNCIL  
CITY OF OMAHA  
Walter J. Galloway  
CLERK  
CITY OF OMAHA

DOUGLAS COUNTY  
SURVEYOR'S OFFICE

James Schubert

HENNINGSON, DURHAM & RICHARDSON INC.  
ENGINEERS • PLANNERS • CONSULTANTS

OMAHA - COLORADO SPRINGS - PHOENIX - DALLAS - CHARLOTTE

45-FILED IN NUMERICAL INDEX AND RECORDED IN THE REGISTER OF DEEDS OFFICE IN DOUGLAS COUNTY, NEBRASKA  
ON 23 DAY OF November 1962 AT 4:07 PM. THOMAS J. O'CONNOR, REGISTER OF D. IS 18.25

BOOK 1169-196