

1157-509 8102

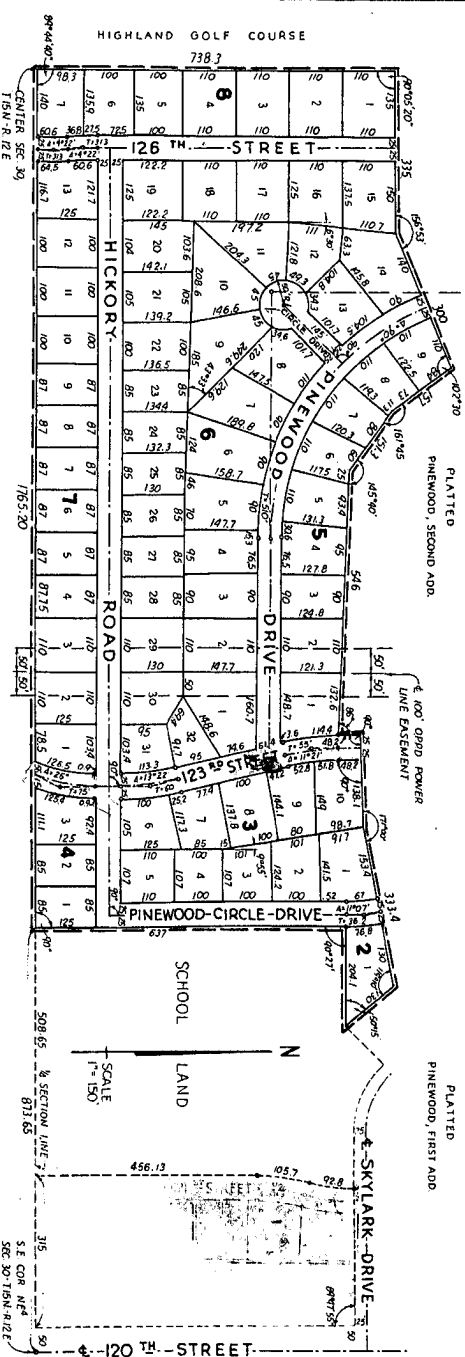
PINWOOD THIRD ADDITION

A PLAT OF PART OF THE SOUTH HALF OF THE NORTHEAST QUARTER OF SECTION 30, TOWNSHIP 15 NORTH, RANGE 12 EAST OF THE 6TH P.M., DOUGLAS COUNTY, NEBRASKA.

SURVEYOR'S CERTIFICATE

I hereby certify as follows:
That I have accurately surveyed and staked with iron pipe the lots and streets in Pinewood Third Addition as shown on this plat, also an iron pipe at all points shown thus on the plat.

That Pinewood Third Addition is located in the S¹ NE⁴ Sec 30, T15N, R12E of the 6th PM, Douglas County, Nebraska, and more particularly described as follows: Beginning at the N & Sec corner in the center of said Sec. 30; thence N 0° 02' 30" W, along & Sec. line, a distance of 138.3 feet; thence N. 89° 52' 10" E, a distance of 335 feet; thence N 66° 45' 10" E, a distance of 300 feet; thence S. 35° 44' 57" E, a distance of 157 feet; thence S. 53° 59' 50" E, a distance of 151.3 feet; thence S. 88° 19' 57" E, a distance of 546 feet; thence N. 2° 19' 57" W, a distance of 482 feet; thence N. 67° 40' 10" E, a distance of 188.1 feet; thence N. 78° 40' 10" E, a distance of 333.4 feet; thence S. 40° 29' 50" E, a distance of 130 feet; thence S. 89° 15' 10" W, a distance of 204.1 feet; thence S. 01° 17' 50" E, a distance of 637 feet to a point on the N & Sec Line 813.65 feet west of the S.E. corner NE⁴ said Sec. 30; thence S. 89° 42' 10" W, and along east-west & Sec. Line a distance of 1765.20 feet to point of beginning of above described property.



ACKNOWLEDGEMENT

STATE OF NEBRASKA }
DOUGLAS COUNTY }
On this 26 day of February, 1962, before me, a Notary Public, duly commissioned, and qualified in and for said County, personally came Lloyd R. Pettigrew, President of Pinewood Development Company, a Nebraska Corporation, and Rose Mary Pettigrew, Secretary of said corporation, to me personally known to be the identical persons whose names are affixed to the dedication of this plat, and they each acknowledged the same to be their voluntary act and deed and the voluntary act and deed of the said Pinewood Development Company, and that the corporate seal of said corporation was affixed thereto by its authority.

DEDICATION

KNOW ALL MEN BY THESE PRESENTS, that Pinewood Development Company, a Nebraska Corporation, being sole owner and proprietor of the land described in the Surveyor's Certificate and embraced within this plat, has caused the same to be subdivided into lots, blocks and streets, as indicated in the Surveyor's Certificate, said subdivision to be hereby known as Pinewood, Third Addition, the lots and blocks numbered as shown and it hereby ratifies and approves of the disposition of its property as shown on this plat, and it hereby dedicates to the public for public use the streets as shown herein.

IN WITNESS WHEREOF, the said Pinewood Development Company, a Nebraska Corporation, has caused these presents to be signed by its President and Secretary, and its corporate seal to be hereunto affixed in accordance with the resolution of the Board of Directors of said corporation this 24 day of February, 1962.

ACKNOWLEDGEMENT

All streets, roads and drives within the boundaries of Pinewood, Third Addition, which are 126th Street, Pinewood Drive, Hickory Road, 123rd Street, Pinewood Circle Drive and _____, are graded to established grades as approved by the City Engineer of the City of Omaha, Nebraska,
Signed this 26 day of February, 1962

6-11-5



ENGINEER E-205, 'S 55

COUNTY TREASURER'S CERTIFICATE

This is to certify that the records of my office show no mortgages or special taxes due or delinquent on the property described in the Surveyor's Certificate to this plat as of _____ day of _____, 1962.

APPROVAL OF THE OMAHA CITY PLANNING BOARD

This plat of Pinewood, Third Addition, was approved by the Omaha City Planning Board on the 26 day of _____, 1962.

OMAHA CITY COUNCIL'S ACCEPTANCE

This plat of Pinewood, Third Addition, was approved and accepted by the City Council of the City of Omaha, Nebraska, on this 27 day of _____, 1962.

DOUGLAS COUNTY S.U.V. OFFICES