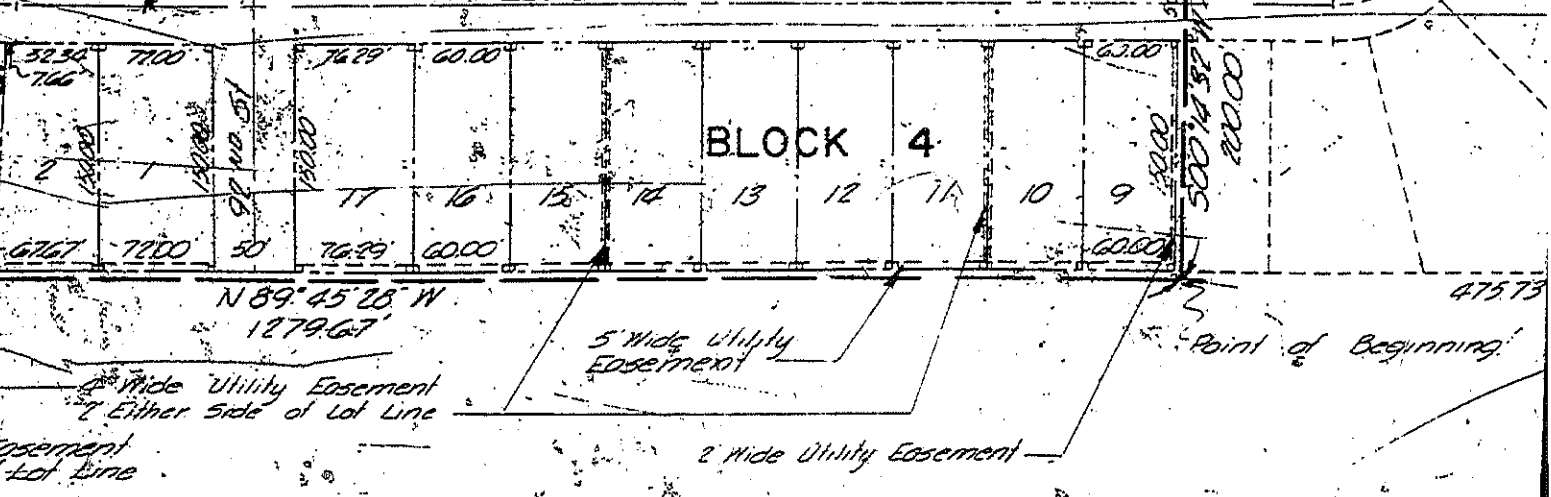
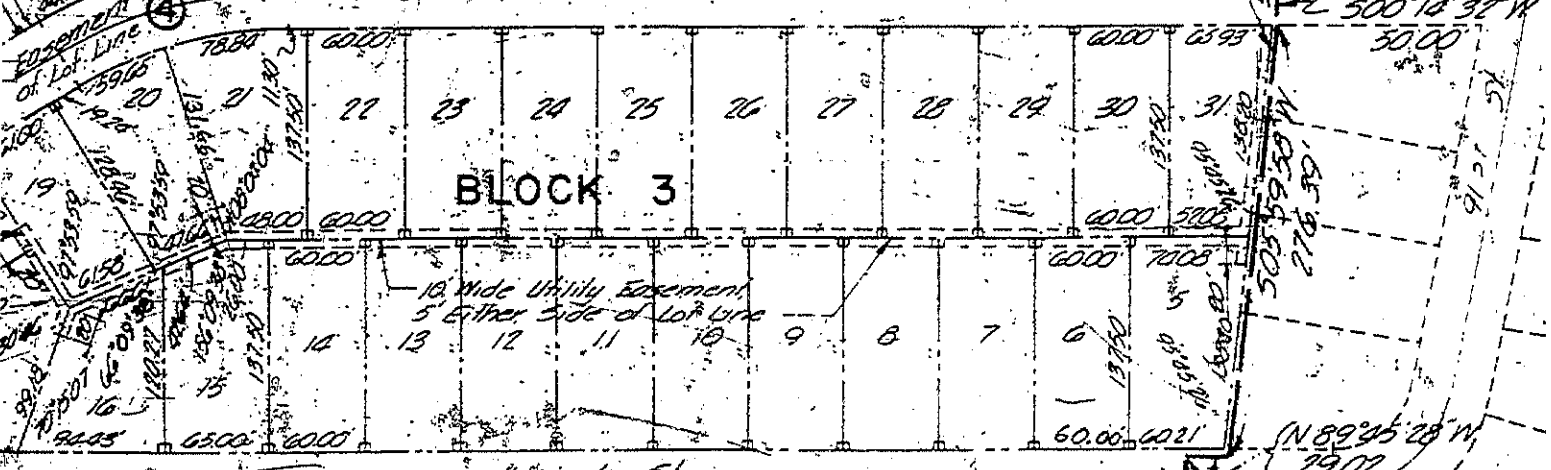
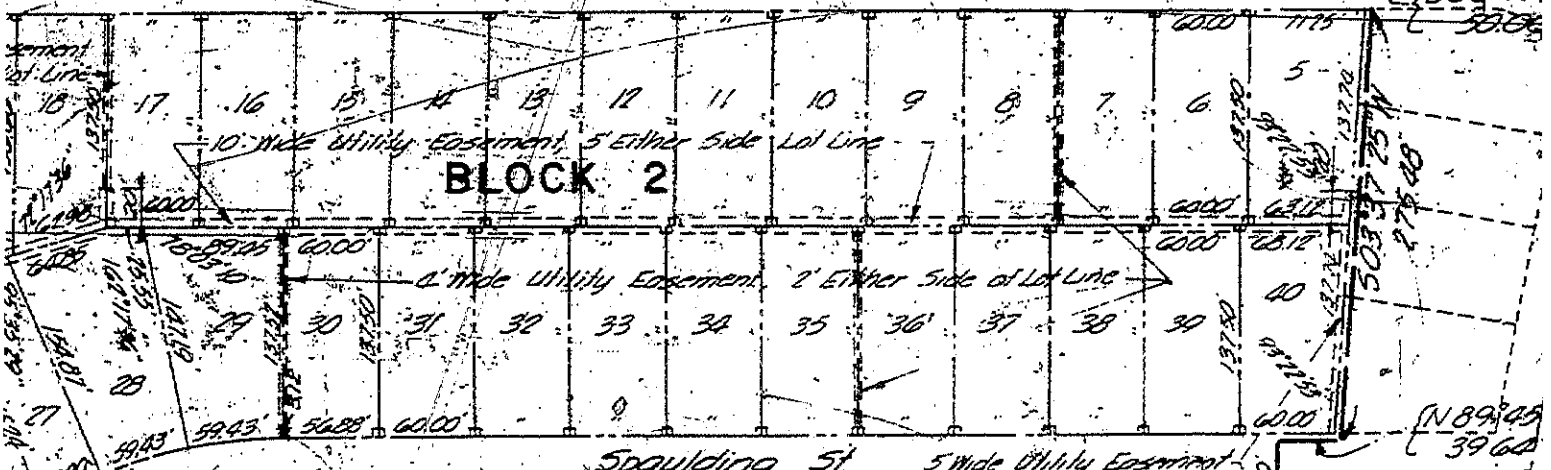
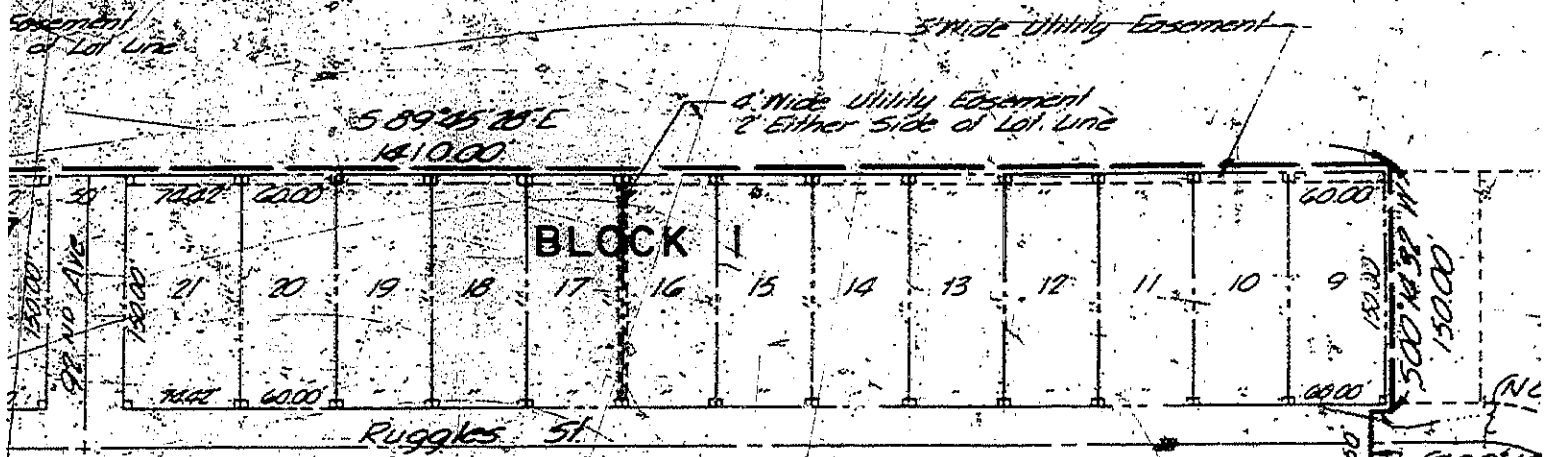


PALOMIN

PART OF BLO
AND BLOC
(SECOND



10' Wide Utility Easement
5' Either Side of Lot Line

5' Wide Utility Easement

BLOCK 7

6' Wide Utility Easement
2' Either Side of Lot Line

10' Wide Utility Easement
5' Either Side of Lot Line

5' Wide Utility Easement

BLOCK 6

Monderson St

4' Wide Utility Easement
2' Either Side of Lot Line

10' Wide Utility Easement
5' Either Side of Lot Line

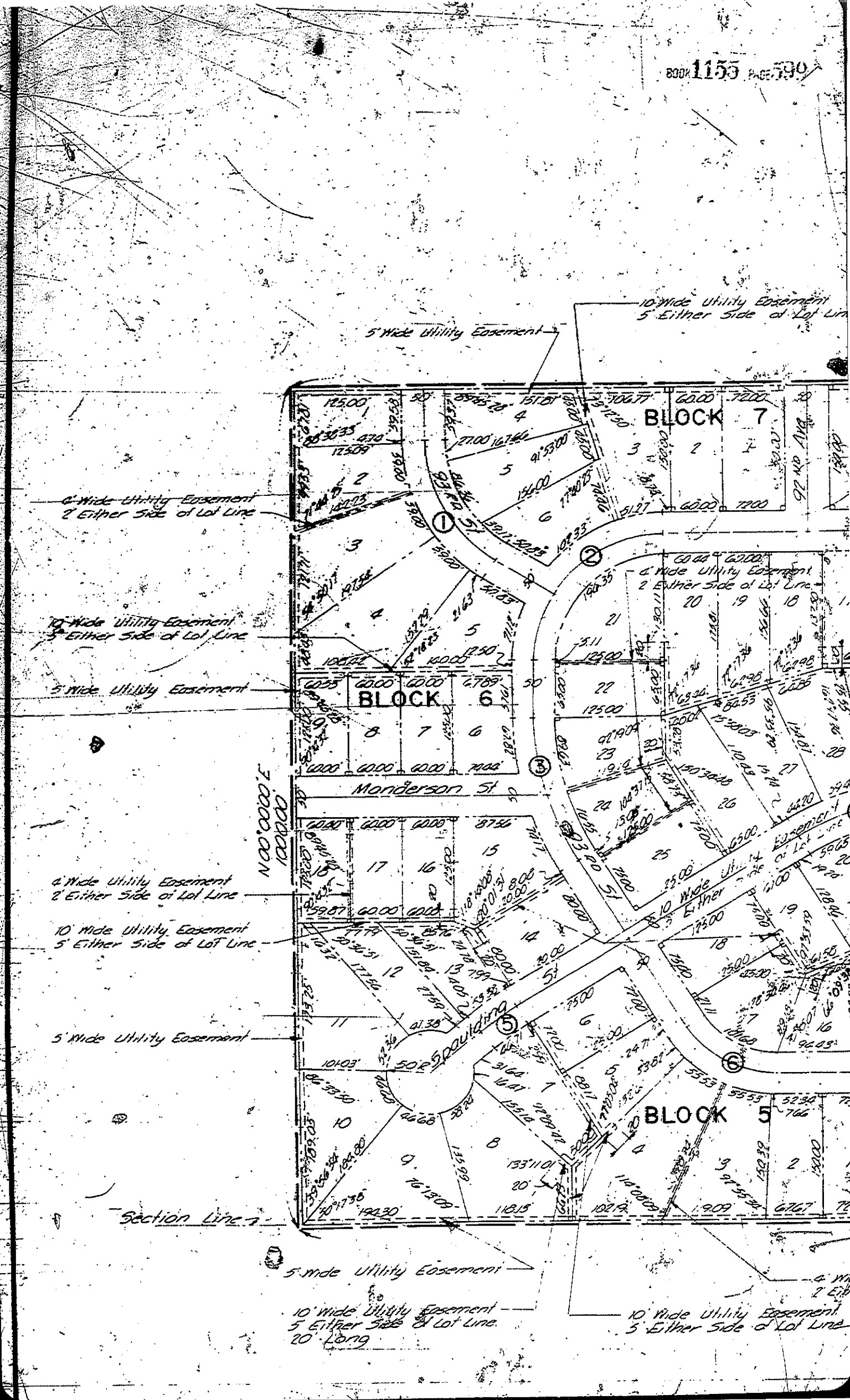
5' Wide Utility Easement

Section Line 7

5' Wide Utility Easement

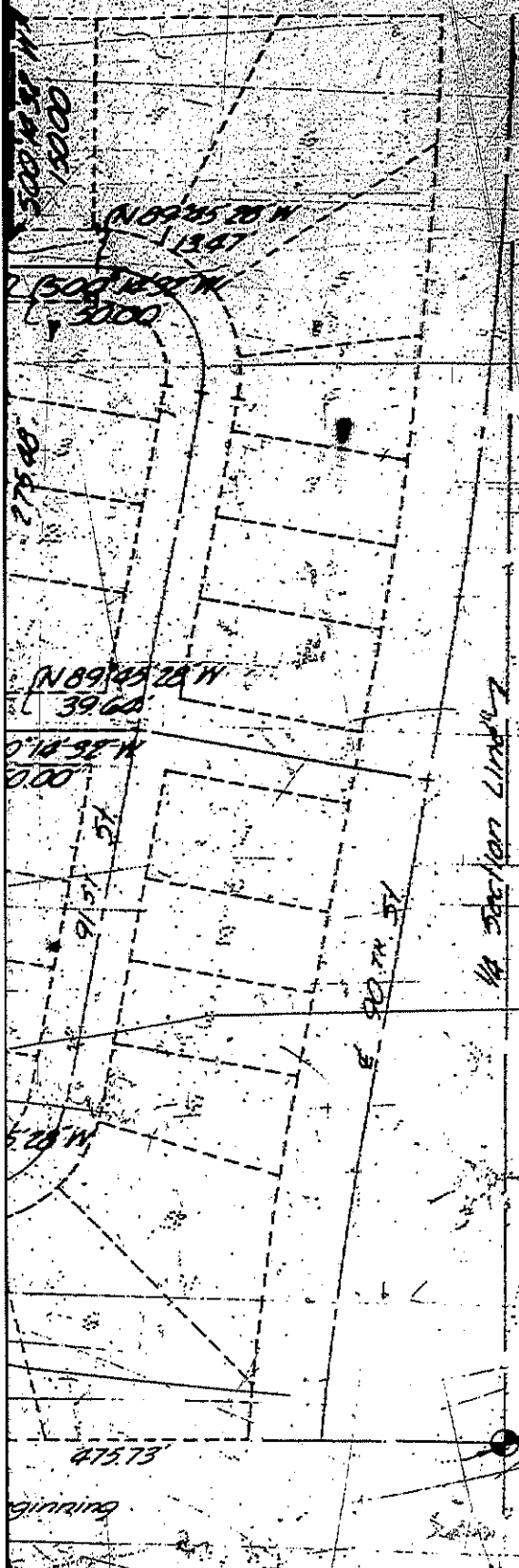
10' Wide Utility Easement
5' Either Side of Lot Line
20' Long

10' Wide Utility Easement
5' Either Side of Lot Line



NO HILLS

BLOCKS 1, 2, 3, AND 4
BLOCKS 5, 6, AND 7
(SECOND PLATTING)



Scale: 1" = 100'

- ① Q CURVE DATA
 $\Delta: 58^{\circ} 15' 40''$
 $D: 31^{\circ} 44' 25''$
 $R: 175.00$
 $T: 97.53$
 $L: 177.95$
- ② Q CURVE DATA
 $\Delta: 90^{\circ} 00' 00''$
 $D: 38^{\circ} 11' 49''$
 $R: 150.00$
 $T: 150.00$
 $L: 235.62$
- ③ Q CURVE DATA
 $\Delta: 31^{\circ} 44' 21''$
 $D: 17^{\circ} 37' 46''$
 $R: 325.00$
 $T: 92.59$
 $L: 100.05$
- ④ Q CURVE DATA
 $\Delta: 31^{\circ} 44' 21''$
 $D: 20^{\circ} 50' 05''$
 $R: 275.00$
 $T: 78.18$
 $L: 157.34$
- ⑤ Q CURVE DATA
 $\Delta: 07^{\circ} 38' 48''$
 $D: 15^{\circ} 16' 44''$
 $R: 375.00$
 $T: 85.06$
 $L: 30.05$
- ⑥ Q CURVE DATA
 $\Delta: 58^{\circ} 15' 39''$
 $D: 45^{\circ} 50' 11''$
 $R: 125.00$
 $T: 69.66$
 $L: 127.11$

SE Corner SW 1/4
Section 3, T15N, R12E

beginning

APPROVAL OF CITY PLANNING BOARD

This plot of part of blocks 1, 2, 3, and 4 and blocks 5, 6, and 7 of PALOMINO HILLS was approved by City Planning Board of the City of Omaha, this 30 day of AUGUST, A.D. 1961.

W. O. O'Rourke
Chairman of the City Planning Board

APPROVAL OF CITY ENGINEER OF OMAHA

I hereby approve this plot of part of blocks 1, 2, 3, and 4 and blocks 5, 6, and 7 of PALOMINO HILLS, this 8th day of August.

A. J. O'Rourke
City Engineer

OMAHA CITY COUNCIL ACCEPTANCE

This plot of part of blocks 1, 2, 3, and 4 and blocks 5, 6, and 7 of PALOMINO HILLS was approved and accepted by the City Council of the City of Omaha this 16th day of September, 1961.

James J. Dvorak
Mayor

ACKNOWLEDGMENT

I hereby certify that the above is the original approved map with the City of Omaha.

W. O. O'Rourke
Chairman of the City Planning Board

COUNTY TREASURER'S CERTIFICATE

This is to certify that the taxes due or delinquent against the property in the Surveyor's Certificate and map shown by record of this office.

Opie August
County Treasurer

CORPORATION ACKNOWLEDGEMENT

State of Nebraska }
County of Douglas } 55

On this 31st day of July A.D. 1966, before me, the undersigned, a Notary Public, in and for said County personally came the ~~same~~ named M. B. Hargleroad Jr., President and Winifred Adams, Secretary, of Hargleroad Moenier, Inc. (a corporation), who are personally known to me to be the identical persons whose names are affixed to the within instrument as President and Secretary to said Corporation, and they acknowledge the execution thereof to be their voluntary act and deed as such officers and the voluntary act and deed of said corporation and that the corporate seal of said corporation was thereto affixed by its authority.

Witness my hand and official seal the last date aforesaid.

Joan M. Hode
Notary Public

My commission expires on the 29th day of Sept. A.D. 1966



THE SURVEYOR'S CERTIFICATE

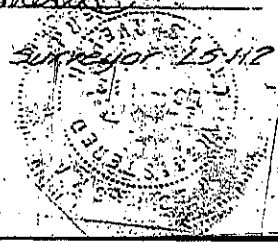
I, Charles W. Ahern, Registered Land Surveyor in the State of Nebraska, do hereby certify that I have accurately surveyed and staked with iron pipes, all corners of all lots, streets, angle points, and the ends of all curves, as shown on this plat of PALOMINO HILLS, part of Blocks 1, 2, 3, and 4 and Blocks 5, 6, and 7. The limits and boundaries of said part Blocks and Blocks are as follows:

A tract of land lying wholly within the city of the City of Section 3 Township 15 North, Range 12 East of the 5th P.M. Douglas County, Nebraska, and more particularly described as follows:

Beginning at a point on the south line of said SW 1/4 said point being 475.75 feet west of the SE corner of the SW 1/4 of said Section 3, thence west along the south line of said SW 1/4 on a bearing of N 89° 05' 28" W a distance of 1279.67 feet to a point, thence N 00° 00' 00" E a distance of 1000.00 feet to a point, thence S 89° 05' 28" E a distance of 1410.00 feet to a point, thence S 00° 14' 32" W a distance of 50.00 feet to a point, thence N 89° 05' 28" W a distance of 1347 feet to a point, thence S 00° 14' 32" W a distance of 50.00 feet to a point, thence S 03° 37' 25" W a distance of 275.48 feet to a point, thence N 39° 05' 28" W a distance of 39.64 feet to a point, thence S 00° 14' 32" W a distance of 50.00 feet to a point, thence S 05° 59' 58" W a distance of 276.39 feet to a point, thence N 89° 05' 28" W a distance of 29.02 feet to a point, thence S 02° 12' 38" W a distance of 200.00 feet to the point of beginning and containing 30.98 acres more or less

Date: August 1 A.D. 1966

Charles W. Ahern
Charles W. Ahern
Registered Land Surveyor 15-112



DEDICATION

Know All Men, By These Presents:

That we, W.B. Harglerood Jr. and Winifred Adams, respectively the President and Secretary of Harglerood Maenner, Inc., a Corporation, sole owners and proprietors, Christ M. Karr and Clara L. Karr, husband and wife, mortgagees of the land described in the Surveyor's Certificate and embraced within this plat have caused the same to be subdivided into blocks, lots, and streets, said subdivision to be known hereinafter as part of Blocks 1, 2, 3, and 4 and Blocks 5, 6, and 7 of PALOMINO HILLS, the blocks and lots numbered as shown and we hereby ratify and approve the description of the property as shown on this plat, and we hereby dedicate to the public for public use the streets as shown herein, and hereby grant the utility easements shown on this plat for the exclusive use of the Omaha Public Power District and the Northwestern Bell Telephone Company for the erection and maintenance of their utilities.

In witness whereof, we do hereunto set our hands this 31st day of July A.D. 1961

Harglerood Maenner, Inc.

W.B. Harglerood Jr. President and Winifred Adams Secretary
W.B. Harglerood Jr. Winifred Adams

Mortgagees:

Christ M. Karr Clara L. Karr
Christ M. Karr and Clara L. Karr, husband and wife

ACKNOWLEDGEMENT OF NOTARY

State of Nebraska }
County of Douglas } 55.

On this 26th day of July A.D. 1961, before me, a Notary Public, duly commissioned and qualified in and for said County, came Christ M. Karr and Clara L. Karr, who are personally known to me to be the identical persons whose names are affixed to the dedication on this plat and they acknowledge the signing of said dedication to be their voluntary act and deed.

Witness my hand and official seal the last date aforesaid.

Joan M. Hode
Notary Public

My commission expires on the 29 day of September A.D. 1966



DOUGLAS COUNTY SURVEYOR'S OFFICE

J. S. ...

KIRKHAM, MICHAEL & ASSOCIATES
ENGINEERS ARCHITECTS
OMAHA RAPID CITY FARGO